

McLeod Pavilion

Protocol: adult_abdomen_ACR MRCP

PATIENT POSITION		IMAGING PARAMETERS	
Patient Entry	<i>Feet First</i>	Imaging Mode	<i>2D</i>
Patient Position	<i>Supine</i>	Pulse Sequence	<i>Spin Echo</i>
Coil Configuration	<i>Body</i>	Imaging Options	<i>Seq, EDR, TRF, Fast, SS, FR, ARC</i>
Plane	<i>3-PLANE</i>	SCAN RANGE	
Series Description	<i>3-Plane Localizer</i>	FOV	<i>50.0</i>
SCAN TIMING		Slice Thickness	<i>8.0</i>
TE	<i>80.0</i>	Slice Spacing	<i>5.0</i>
Number of Echoes	<i>1</i>	ACQ TIMING	
TR	<i>525.0</i>	Freq	<i>384</i>
Receiver Bandwidth	<i>83.33</i>	Phase	<i>160</i>
IMAGE ENHANCE		Freq DIR	<i>Unswap</i>
Filter Choice	<i>None</i>	# of Acq. Before Pause	<i>0</i>
GATING/TRIGGER		Phase FOV	<i>1.00</i>
Auto Trigger Type	<i>Off</i>	Auto Shim	<i>Auto</i>
FMRI		Phase Correction	<i>No</i>
PSD Trigger	<i>Internal</i>	USER CVS	
View Order	<i>Bottom/Up</i>	User CV1	<i>1.00</i>
# of Repetitions REST	<i>0</i>	MULTI-PHASE	
# of Repetitions ACTIVE	<i>0</i>	Seperate Series	<i>0</i>
SAT		Mask Phase	<i>0</i>
Tag Type	<i>None</i>	Mask Pause	<i>0</i>
TRICKS		DIFFUSION	
Pause On/Off	<i>On</i>	Recon All Images	<i>On</i>
Auto Subtract	<i>0</i>	CONTRAST	
Auto SCIC	<i>Off</i>	Contrast Yes/No	<i>No</i>

3-Plane Localizer

3-Plane Localizer

Protocol: adult_abdomen_ACR MRCP

PATIENT POSITION		IMAGING PARAMETERS	
Patient Entry	Feet First	Imaging Mode	2D
Patient Position	Supine	Pulse Sequence	Spin Echo
Coil Configuration	Body	Imaging Options	Seq, EDR, Fast, SS, FR, ARC
Plane	3-PLANE		
Series Description	3-Plane Localizer BH		
SCAN TIMING		SCAN RANGE	
TE	70.0	FOV	50.0
Number of Echoes	1	Slice Thickness	15.0
TR	Minimum	Slice Spacing	5.0
Receiver Bandwidth	83.33		
IMAGE ENHANCE		ACQ TIMING	
Filter Choice	None	Freq	256
		Phase	160
GATING/TRIGGER		Freq DIR	Unswap
Auto Trigger Type	Off	# of Acq. Before Pause	0
		Phase FOV	1.00
FMRI		Auto Shim	Auto
PSD Trigger	Internal	Phase Correction	No
View Order	Bottom/Up	USER CVS	
# of Repetitions REST	0	User CV2	240.00
# of Repetitions ACTIVE	0	User CV13	1.00
SAT		MULTI-PHASE	
Tag Type	None	Seperate Series	0
		Mask Phase	0
TRICKS		Mask Pause	0
Pause On/Off	On	DIFFUSION	
Auto Subtract	0	Recon All Images	On
Auto SCIC	Off	CONTRAST	
OTHERS		Contrast Yes/No	No
Protocol Notes	Navigator Tracker Placement Considerations * Use breath hold 3 plane localizer for navigator tracker placement for optimal results*		

3-Plane Localizer BH

3-Plane Localizer BH

McLeod Pavilion

Protocol: adult_abdomen_ACR MRCP

PATIENT POSITION		IMAGING PARAMETERS	
Patient Entry	<i>Feet First</i>	Imaging Mode	<i>2D</i>
Patient Position	<i>Supine</i>	Pulse Sequence	<i>Fiesta</i>
Coil Configuration	<i>Body</i>	Imaging Options	<i>Seq, EDR, Fast, ARC</i>
Plane	<i>AXIAL</i>	SCAN RANGE	
Series Description	<i>Ax FIESTA ASPIR BH</i>	FOV	<i>40.0</i>
SCAN TIMING		Slice Thickness	<i>7.0</i>
Flip Angle	<i>50</i>	Slice Spacing	<i>1.0</i>
TE	<i>Minimum</i>	ACQ TIMING	
Number of Echoes	<i>1</i>	Freq	<i>192</i>
TI	<i>210</i>	Phase	<i>300</i>
Receiver Bandwidth	<i>125.00</i>	Freq DIR	<i>R/L</i>
IMAGE ENHANCE		NEX	<i>1.00</i>
Filter Choice	<i>None</i>	# of Acq. Before Pause	<i>0</i>
GATING/TRIGGER		Phase FOV	<i>0.80</i>
Auto Trigger Type	<i>Off</i>	Auto Shim	<i>Auto</i>
MULTI-PHASE		Phase Correction	<i>No</i>
Seperate Series	<i>0</i>	FMRI	
Mask Phase	<i>0</i>	PSD Trigger	<i>Internal</i>
Mask Pause	<i>0</i>	Slice Order	<i>Interleaved</i>
DIFFUSION		View Order	<i>Bottom/Up</i>
Recon All Images	<i>On</i>	# of Repetitions REST	<i>0</i>
CONTRAST		# of Repetitions ACTIVE	<i>0</i>
Contrast Yes/No	<i>No</i>	SAT	
		Tag Type	<i>None</i>
		Fat/Water Saturation	<i>Fat Special</i>
		TRICKS	
		Pause On/Off	<i>On</i>
		Auto Subtract	<i>0</i>
		Auto SCIC	<i>Off</i>
		OTHERS	
		Protocol Notes	<i>Tip: - Place a shim volume over the liver to help reduce artifacts. - TI time for ASPIR (ChemSAT) can be modified by changing the Prep Time.</i>

Ax FIESTA ASPIR BH

Ax FIESTA ASPIR BH

Protocol: adult_abdomen_ACR MRCP

PATIENT POSITION		IMAGING PARAMETERS	
Patient Entry	<i>Feet First</i>	Imaging Mode	<i>2D</i>
Patient Position	<i>Supine</i>	Pulse Sequence	<i>Spin Echo</i>
Coil Configuration	<i>Body</i>	Imaging Options	<i>EDR, Fast, SS, Nav, ARC</i>
Plane	<i>CORONAL</i>	SCAN RANGE	
Series Description	<i>Cor SSFSE Nav</i>	FOV	<i>40.0</i>
SCAN TIMING		Slice Thickness	<i>7.0</i>
TE	<i>90.0</i>	Slice Spacing	<i>1.0</i>
Number of Echoes	<i>1</i>	ACQ TIMING	
Receiver Bandwidth	<i>83.33</i>	Freq	<i>320</i>
IMAGE ENHANCE		Phase	<i>256</i>
Filter Choice	<i>A</i>	Freq DIR	<i>S/I</i>
GATING/TRIGGER		NEX	<i>1.00</i>
Auto Trigger Type	<i>Off</i>	Phase FOV	<i>1.00</i>
Resp. Trigger Window	<i>30</i>	Auto Shim	<i>Auto</i>
FMRI		Phase Correction	<i>No</i>
PSD Trigger	<i>Internal</i>	USER CVS	
Slice Order	<i>Interleaved</i>	User CV1	<i>1.00</i>
View Order	<i>Bottom/Up</i>	User CV2	<i>240.00</i>
# of Repetitions REST	<i>0</i>	User CV13	<i>1.00</i>
# of Repetitions ACTIVE	<i>0</i>	MULTI-PHASE	
SAT		Seperate Series	<i>0</i>
Tag Type	<i>None</i>	Mask Phase	<i>0</i>
TRICKS		Mask Pause	<i>0</i>
Pause On/Off	<i>On</i>	DIFFUSION	
Auto Subtract	<i>0</i>	Recon All Images	<i>On</i>
Auto SCIC	<i>2</i>	TRACKER	
CONTRAST		Tracker Length	<i>120.0</i>
Contrast Yes/No	<i>No</i>	Tracker Thickness	<i>20.0</i>

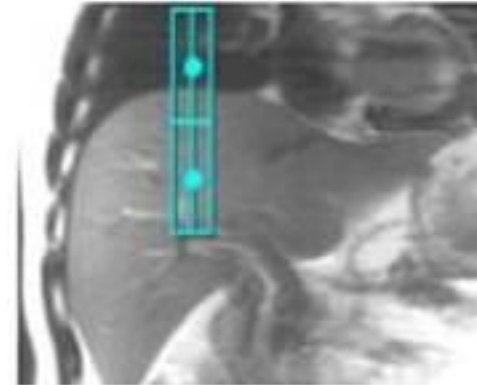
Cor SSFSE Nav

Cor SSFSE Nav

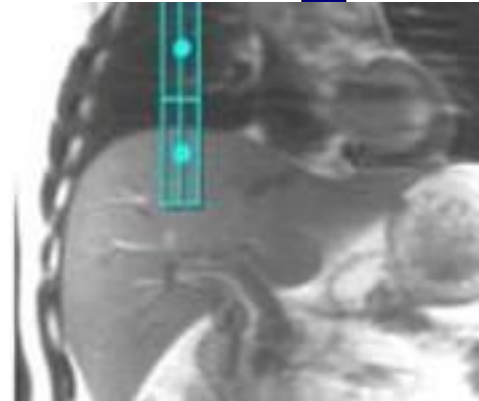
OTHERS

Protocol Notes

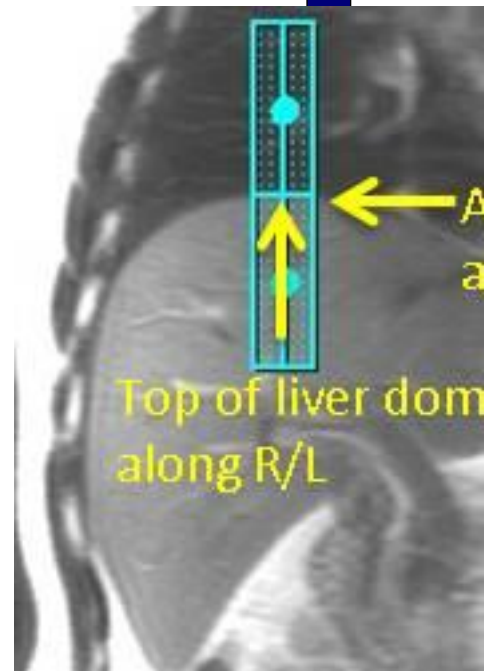
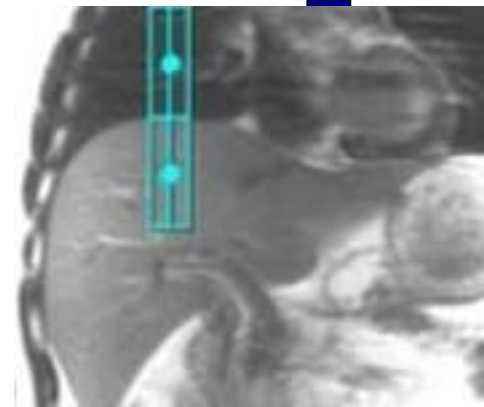
*Auto Tracker placement is turned on
Tracker will be placed automatically
Manual Placement
Instructions:
Navigator Tracker
Placement Considerations
* Place navigator tracker on a breath hold localizer for the optimum performance*
- Center of tracker should be 1.5 cm below diaphragm if localizer was acquired with expiration breath hold
- Center of tracker should be 1.5 cm above diaphragm if localizer was acquired with inspiration breath hold
- Center of tracker should be placed on the diaphragm if localizer was acquired free breathing
*Please review operator manual for additional information
Expiration-Breath Hold Tracker Placement*

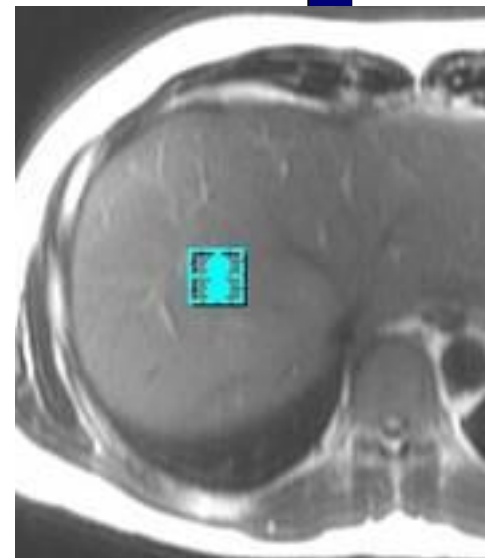
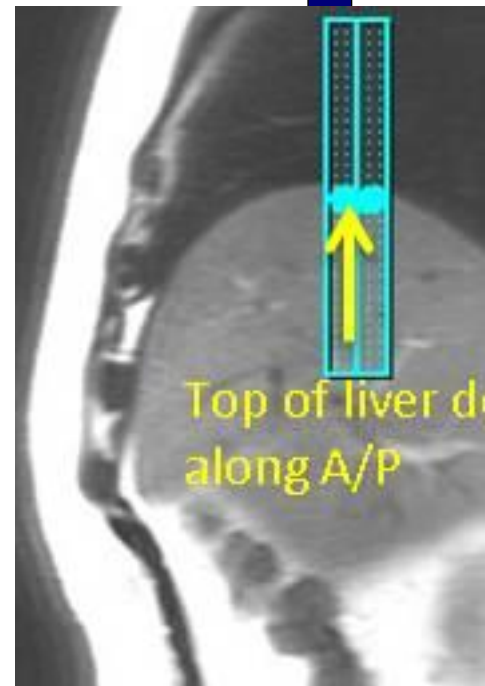


Inspiration-Breath Hold Tracker Placement

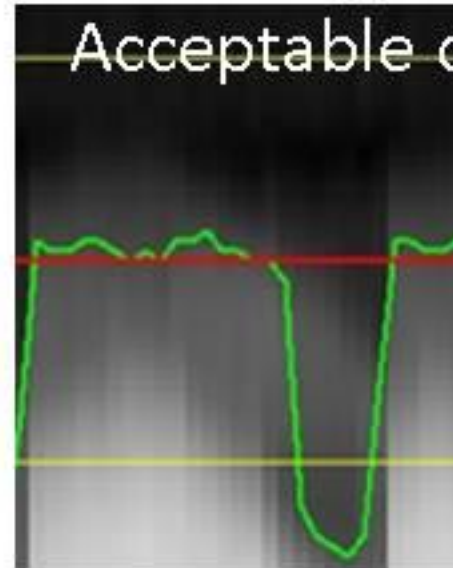


Free Breathing Tracker Placement





Easy Tro



-> No need to ch
anything since g
waveform refle
respiratory statu

Protocol: adult_abdomen_ACR MRCP

PATIENT POSITION		IMAGING PARAMETERS	
Patient Entry	<i>Feet First</i>	Imaging Mode	<i>2D</i>
Patient Position	<i>Supine</i>	Pulse Sequence	<i>Spin Echo</i>
Coil Configuration	<i>Body</i>	Imaging Options	<i>EDR, Fast, SS, Nav, ARC</i>
Plane	<i>AXIAL</i>	SCAN RANGE	
Series Description	<i>Ax SSFSE Nav</i>	FOV	<i>38.0</i>
SCAN TIMING		Slice Thickness	<i>7.0</i>
TE	<i>90.0</i>	Slice Spacing	<i>1.0</i>
Number of Echoes	<i>1</i>	ACQ TIMING	
Receiver Bandwidth	<i>83.33</i>	Freq	<i>320</i>
IMAGE ENHANCE		Phase	<i>256</i>
Filter Choice	<i>A</i>	Freq DIR	<i>R/L</i>
GATING/TRIGGER		NEX	<i>1.00</i>
Auto Trigger Type	<i>Off</i>	Phase FOV	<i>1.00</i>
Resp. Trigger Window	<i>30</i>	Auto Shim	<i>Auto</i>
FMRI		Phase Correction	<i>No</i>
PSD Trigger	<i>Internal</i>	USER CVS	
Slice Order	<i>Interleaved</i>	User CV1	<i>1.00</i>
View Order	<i>Bottom/Up</i>	User CV2	<i>240.00</i>
# of Repetitions REST	<i>0</i>	User CV13	<i>1.00</i>
# of Repetitions ACTIVE	<i>0</i>	MULTI-PHASE	
SAT		Seperate Series	<i>0</i>
Tag Type	<i>None</i>	Mask Phase	<i>0</i>
TRICKS		Mask Pause	<i>0</i>
Pause On/Off	<i>On</i>	DIFFUSION	
Auto Subtract	<i>0</i>	Recon All Images	<i>On</i>
Auto SCIC	<i>2</i>	TRACKER	
CONTRAST		Tracker Length	<i>120.0</i>
Contrast Yes/No	<i>No</i>	Tracker Thickness	<i>20.0</i>

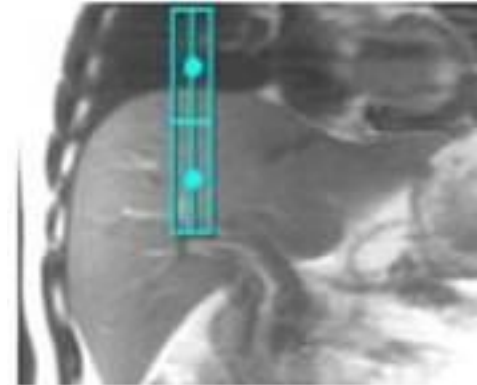
AX SSFSE Nav

AX SSFSE Nav

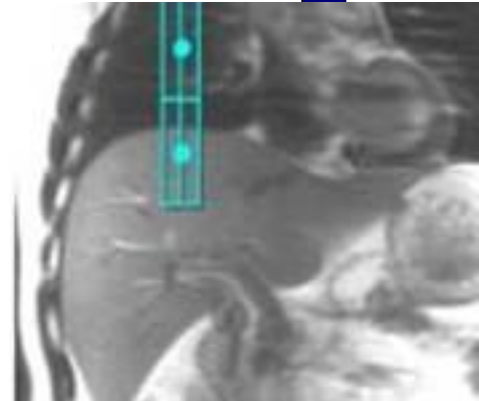
OTHERS

Protocol Notes

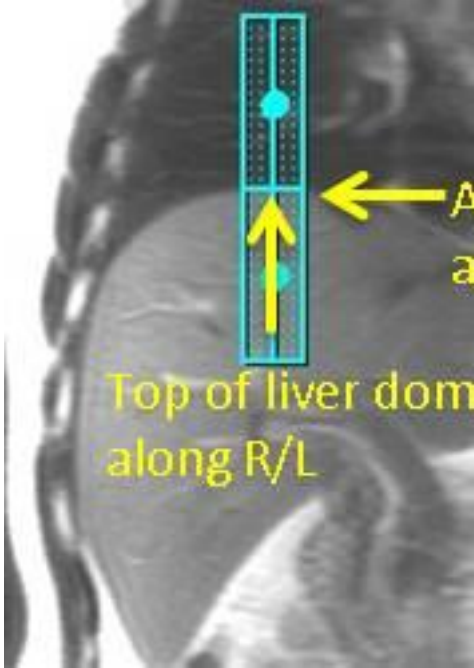
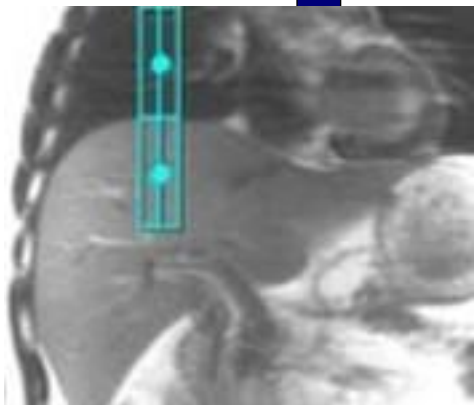
*Auto Tracker placement is turned on
Tracker will be placed automatically
Manual Placement
Instructions:
Navigator Tracker
Placement Considerations
* Place navigator tracker on a breath hold localizer for the optimum performance*
- Center of tracker should be 1.5 cm below diaphragm if localizer was acquired with expiration breath hold
- Center of tracker should be 1.5 cm above diaphragm if localizer was acquired with inspiration breath hold
- Center of tracker should be placed on the diaphragm if localizer was acquired free breathing
*Please review operator manual for additional information
Expiration-Breath Hold Tracker Placement*

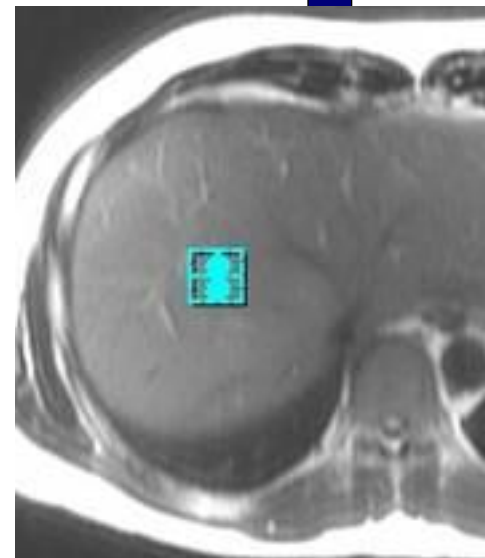
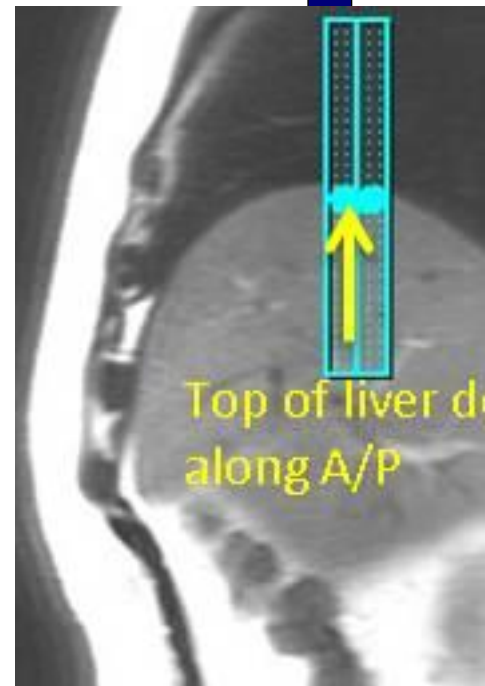


Inspiration-Breath Hold Tracker Placement

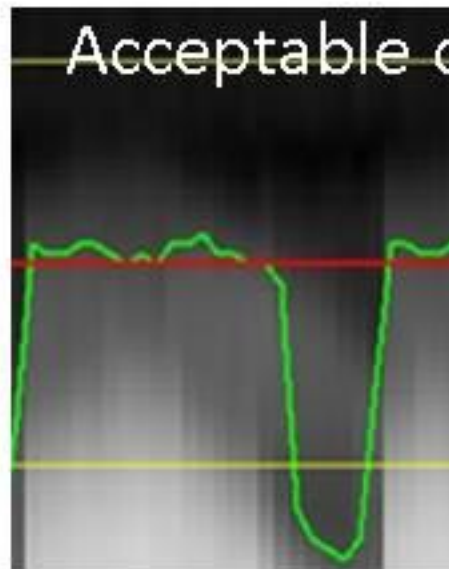


Free Breathing Tracker Placement





Easy Tro



-> No need to check anything since good waveform reflects respiratory status

Protocol: adult_abdomen_ACR MRCP

PATIENT POSITION		IMAGING PARAMETERS	
Patient Entry	<i>Feet First</i>	Imaging Mode	<i>2D</i>
Patient Position	<i>Supine</i>	Pulse Sequence	<i>FSE-XL</i>
Coil Configuration	<i>Body</i>	Imaging Options	<i>FC, EDR, TRF, Fast, FR, Nav, ARC</i>
Plane	<i>AXIAL</i>		
Series Description	<i>Ax T2 frFSE Nav FS</i>	SCAN RANGE	
SCAN TIMING		FOV	<i>38.0</i>
Flip Angle	<i>111</i>	Slice Thickness	<i>7.0</i>
TE	<i>102.0</i>	Slice Spacing	<i>1.0</i>
Number of Echoes	<i>1</i>	ACQ TIMING	
Echo Train Length	<i>17</i>	Freq	<i>384</i>
Receiver Bandwidth	<i>62.50</i>	Phase	<i>256</i>
IMAGE ENHANCE		Freq DIR	<i>R/L</i>
Filter Choice	<i>A</i>	Fat Shift DIR	<i>Normal (L)</i>
GATING/TRIGGER		NEX	<i>2.00</i>
Auto Trigger Type	<i>Off</i>	Phase FOV	<i>1.00</i>
Resp. Trigger Window	<i>50</i>	Auto Shim	<i>Auto</i>
FMRI		Phase Correction	<i>No</i>
PSD Trigger	<i>Internal</i>	Flow Direction	<i>Slice</i>
View Order	<i>Bottom/Up</i>	Compensation	
# of Repetitions REST	<i>0</i>	USER CVS	
# of Repetitions ACTIVE	<i>0</i>	User CV19	<i>1.00</i>
		User CV22	<i>1.00</i>
SAT		MULTI-PHASE	
Tag Type	<i>None</i>	Seperate Series	<i>0</i>
Fat/Water Saturation	<i>Fat</i>	Mask Phase	<i>0</i>
		Mask Pause	<i>0</i>
TRICKS		DIFFUSION	
Pause On/Off	<i>On</i>	Recon All Images	<i>On</i>
Auto Subtract	<i>0</i>		
Auto SCIC	<i>2</i>	TRACKER	
CONTRAST		Tracker Length	<i>120.0</i>
Contrast Yes/No	<i>No</i>	Tracker Thickness	<i>20.0</i>

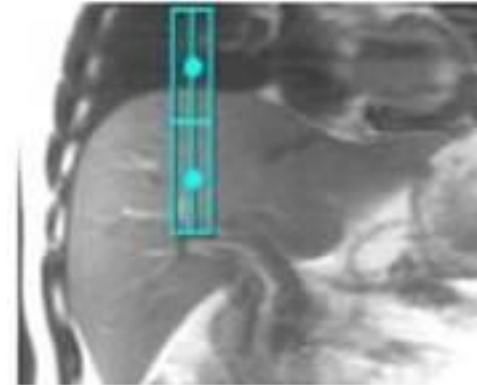
Ax T2 frFSE Nav FS

Ax T2 frFSE Nav FS

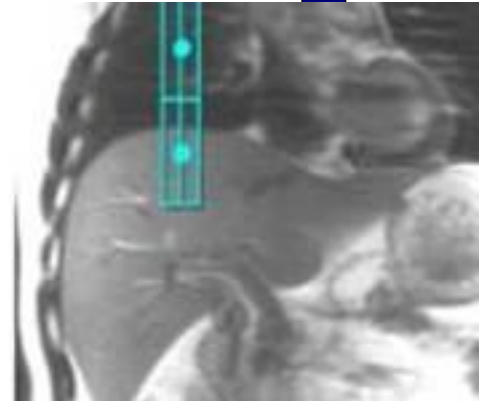
OTHERS

Protocol Notes

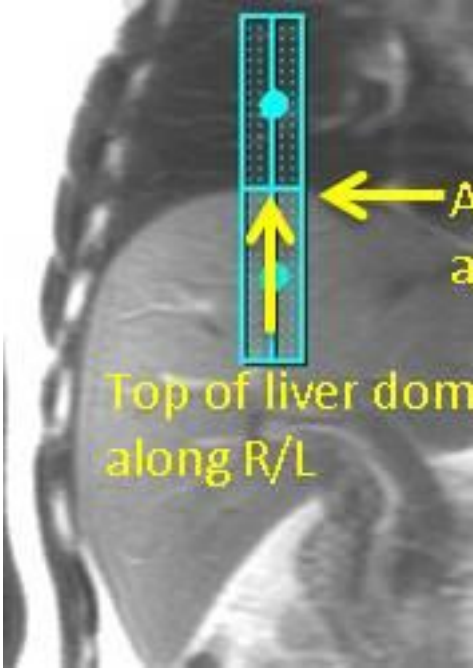
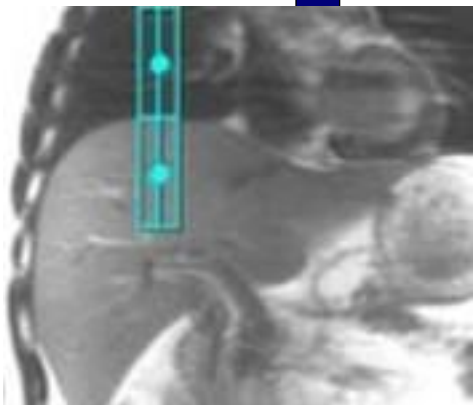
*Auto Tracker placement is turned on
Tracker will be placed automatically
Manual Placement
Instructions:
Navigator Tracker
Placement Considerations
* Place navigator tracker on a breath hold localizer for the optimum performance*
- Center of tracker should be 1.5 cm below diaphragm if localizer was acquired with expiration breath hold
- Center of tracker should be 1.5 cm above diaphragm if localizer was acquired with inspiration breath hold
- Center of tracker should be placed on the diaphragm if localizer was acquired free breathing
*Please review operator manual for additional information
Expiration-Breath Hold Tracker Placement*

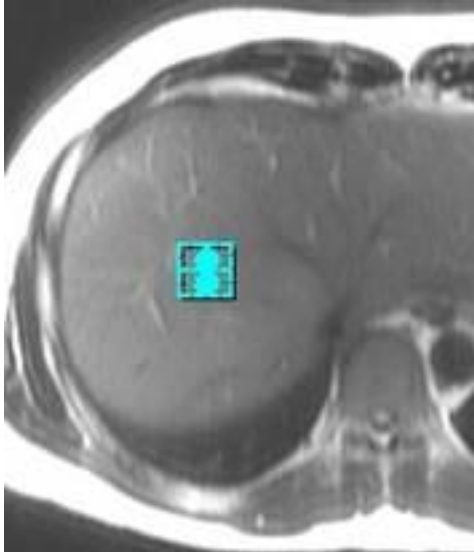
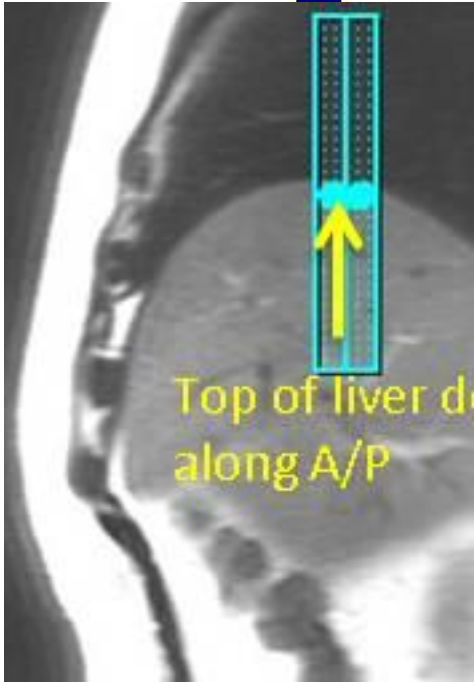


Inspiration-Breath Hold Tracker Placement

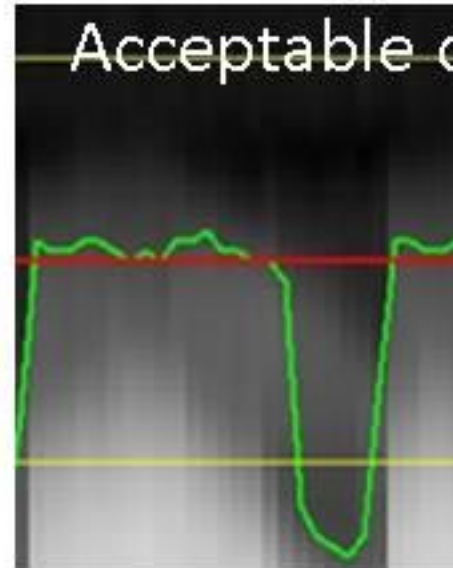


Free Breathing Tracker Placement





Easy Tro



-> No need to check anything since good waveform reflects respiratory status

McLeod Pavilion

Protocol: adult_abdomen_ACR MRCP

PATIENT POSITION		IMAGING PARAMETERS	
Patient Entry	<i>Feet First</i>	Imaging Mode	<i>2D</i>
Patient Position	<i>Supine</i>	Pulse Sequence	<i>SPGR</i>
Coil Configuration	<i>Body</i>	Imaging Options	<i>EDR, Fast, ARC</i>
Plane	<i>AXIAL</i>	SCAN RANGE	
Series Description	<i>Ax Dual Echo BH</i>	FOV	<i>40.0</i>
SCAN TIMING		Slice Thickness	<i>7.0</i>
Flip Angle	<i>55</i>	Slice Spacing	<i>1.0</i>
Number of Echoes	<i>2</i>	ACQ TIMING	
TR	<i>150.0</i>	Freq	<i>288</i>
IMAGE ENHANCE		Phase	<i>192</i>
Filter Choice	<i>A</i>	Freq DIR	<i>R/L</i>
GATING/TRIGGER		Phase FOV	<i>1.00</i>
Auto Trigger Type	<i>Off</i>	Auto Shim	<i>Auto</i>
MULTI-PHASE		Phase Correction	<i>No</i>
Seperate Series	<i>0</i>	FMRI	
Mask Phase	<i>0</i>	PSD Trigger	<i>Internal</i>
Mask Pause	<i>0</i>	View Order	<i>Bottom/Up</i>
DIFFUSION		# of Repetitions REST	<i>0</i>
Recon All Images	<i>On</i>	# of Repetitions ACTIVE	<i>0</i>
CONTRAST		SAT	
Contrast Yes/No	<i>No</i>	Tag Type	<i>None</i>
		TRICKS	
		Pause On/Off	<i>On</i>
		Auto Subtract	<i>0</i>
		Auto SCIC	<i>2</i>

Ax Dual Echo BH

Ax Dual Echo BH

Protocol: adult_abdomen_ACR MRCP

PATIENT POSITION	
Patient Entry	Feet First
Patient Position	Supine
Coil Configuration	Body
Plane	AXIAL
Series Description	Ax DWI 3:1 B-800-500-50Nav

SCAN TIMING	
TE	Minimum
Number of Echoes	1
Number of Shots	1

IMAGE ENHANCE	
Filter Choice	None

GATING/TRIGGER	
Auto Trigger Type	Off
Resp. Trigger Window	30

FMRI	
PSD Trigger	Internal
View Order	Bottom/Up
# of Repetitions REST	0
# of Repetitions ACTIVE	0

SAT	
Tag Type	None
Fat/Water Saturation	Fat

TRICKS	
Pause On/Off	On
Auto Subtract	0
Auto SCIC	2

CONTRAST	
Contrast Yes/No	No

IMAGING PARAMETERS	
Imaging Mode	2D
Pulse Sequence	Spin Echo
Imaging Options	EDR, EPI, DIFF, Asset, Nav

SCAN RANGE	
FOV	40.0
Slice Thickness	7.0
Slice Spacing	1.0

ACQ TIMING	
Freq	80
Phase	128
Freq DIR	R/L
Phase FOV	1.00
Auto Shim	Auto
Phase Correction	Yes

USER CVS	
User CV0	1.00
User CV17	1.00
User CV18	1.00

MULTI-PHASE	
Seperate Series	0
Mask Phase	0
Mask Pause	0

DIFFUSION	
Optimized TE	Yes
Diffusion Directions	64
Number of Diffusion Directions	1
Number of T2 Images	0
Dual Spin Echo	Off
Recon All Images	On

TRACKER	
Tracker Length	120.0
Tracker Thickness	20.0

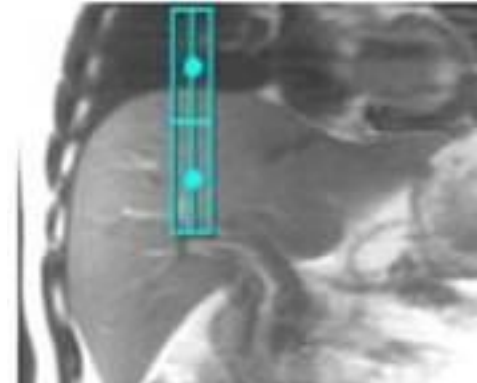
Ax DWI 3:1 B-800-500-50Nav

Ax DWI 3:1 B-800-500-50Nav

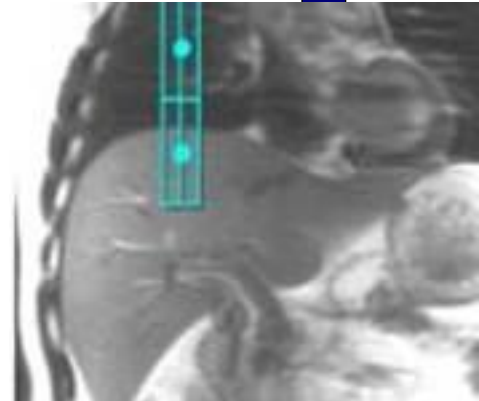
OTHERS

Protocol Notes

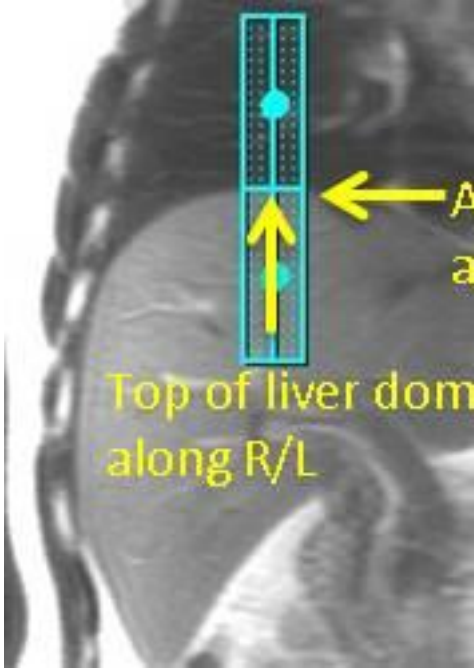
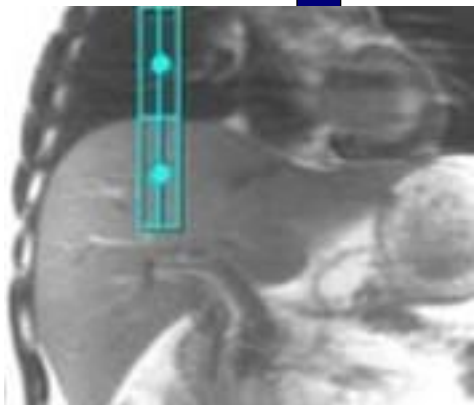
*Auto Tracker placement is turned on
Tracker will be placed automatically
Manual Placement
Instructions:
Navigator Tracker
Placement Considerations
* Place navigator tracker on a breath hold localizer for the optimum performance*
- Center of tracker should be 1.5 cm below diaphragm if localizer was acquired with expiration breath hold
- Center of tracker should be 1.5 cm above diaphragm if localizer was acquired with inspiration breath hold
- Center of tracker should be placed on the diaphragm if localizer was acquired free breathing
*Please review operator manual for additional information
Expiration-Breath Hold Tracker Placement*

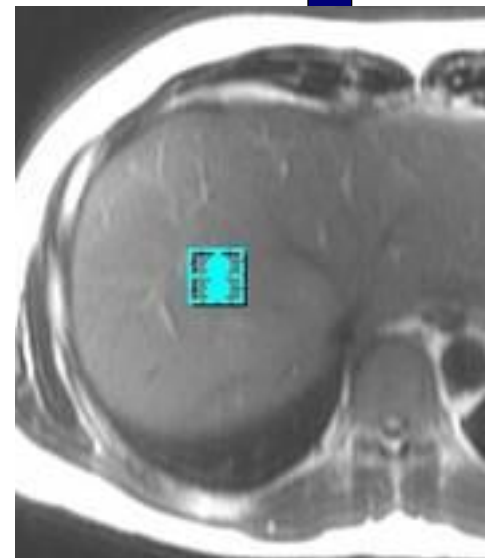
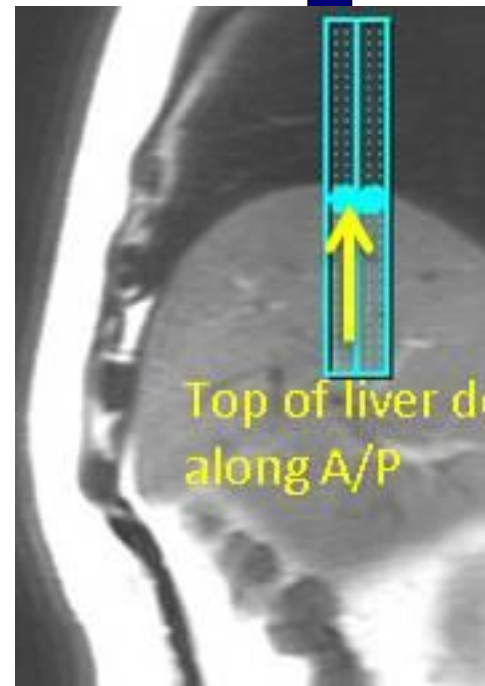


Inspiration-Breath Hold Tracker Placement

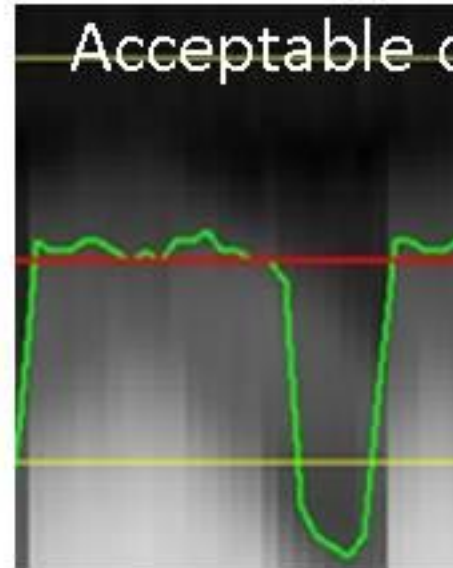


Free Breathing Tracker Placement





Easy Tro



-> No need to check anything since green waveform reflects respiratory status

Protocol: adult_abdomen_ACR MRCP

PATIENT POSITION		IMAGING PARAMETERS	
Patient Entry	<i>Feet First</i>	Imaging Mode	<i>3D</i>
Patient Position	<i>Supine</i>	Pulse Sequence	<i>FRFSE-XL</i>
Coil Configuration	<i>Body</i>	Imaging Options	<i>EDR, Fast, ZIP2, T2P, Asset, FR, Nav, MRCP</i>
Plane	<i>OBLIQUE</i>	SCAN RANGE	
Series Description	<i>3D Obl MRCP Nav</i>	FOV	<i>34.0</i>
SCAN TIMING		Slice Thickness	<i>1.4</i>
TE	<i>900.0</i>	Location per Slab	<i>64</i>
Number of Echoes	<i>1</i>	Overlap Locations	<i>0</i>
Echo Train Length	<i>120</i>	ACQ TIMING	
Receiver Bandwidth	<i>41.67</i>	Freq	<i>288</i>
IMAGE ENHANCE		Phase	<i>288</i>
Filter Choice	<i>None</i>	Freq DIR	<i>Unswap</i>
GATING/TRIGGER		NEX	<i>1.00</i>
Auto Trigger Type	<i>Off</i>	Phase FOV	<i>1.00</i>
Resp. Trigger Window	<i>30</i>	Auto Shim	<i>Auto</i>
MULTI-PHASE		Phase Correction	<i>No</i>
Seperate Series	<i>0</i>	FMRI	
Mask Phase	<i>0</i>	PSD Trigger	<i>Internal</i>
Mask Pause	<i>0</i>	View Order	<i>Bottom/Up</i>
DIFFUSION		# of Repetitions REST	<i>0</i>
Recon All Images	<i>On</i>	# of Repetitions ACTIVE	<i>0</i>
TRACKER		SAT	
Tracker Length	<i>120.0</i>	Tag Type	<i>None</i>
Tracker Thickness	<i>20.0</i>	Fat/Water Saturation	<i>Fat</i>
		TRICKS	
		Pause On/Off	<i>On</i>
		Auto Subtract	<i>0</i>
		Auto SCIC	<i>Off</i>
		CONTRAST	
		Contrast Yes/No	<i>No</i>

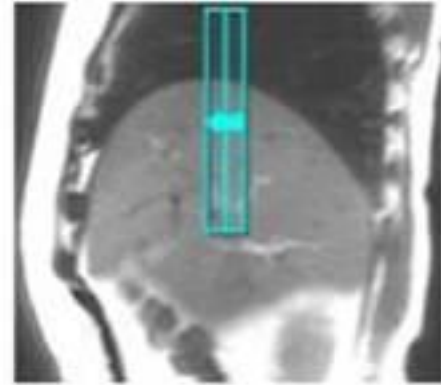
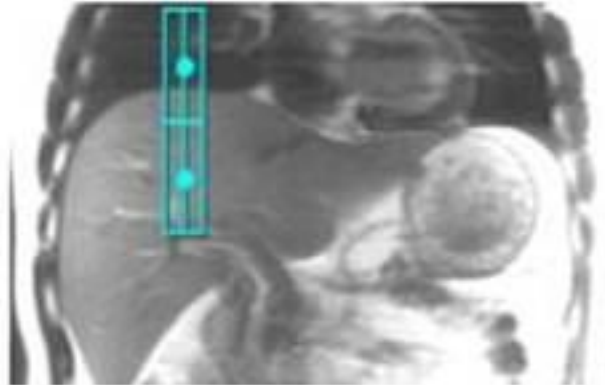
3D Obl MRCP Nav

3D Obl MRCP Nav

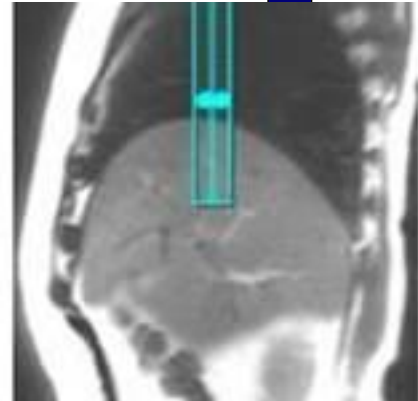
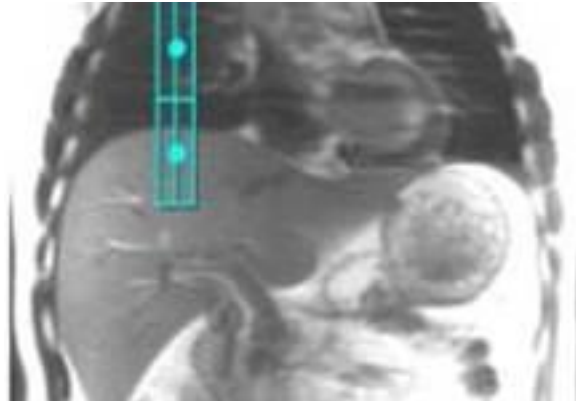
OTHERS

Protocol Notes

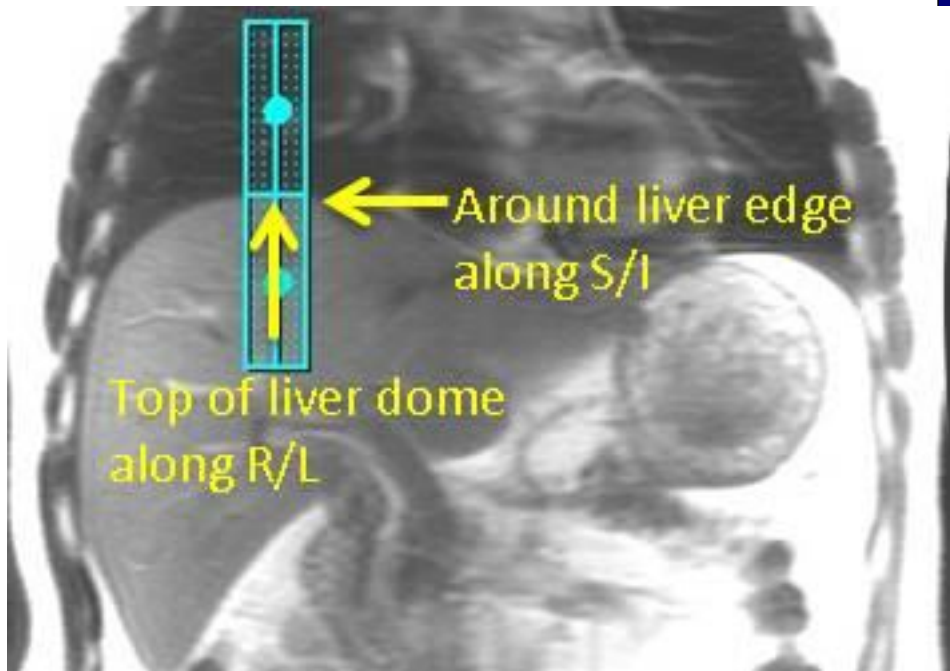
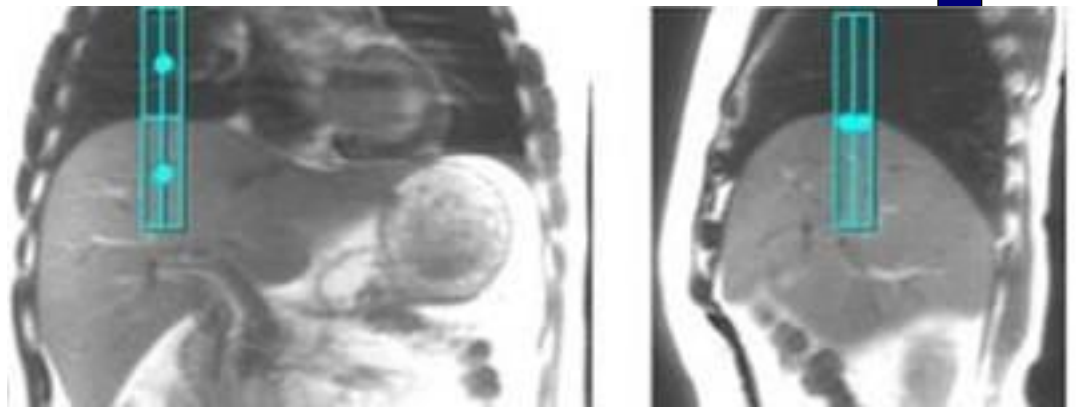
*Auto Tracker placement is turned on
Tracker will be placed automatically
Manual Placement
Instructions:
Navigator Tracker
Placement Considerations
* Place navigator tracker on a breath hold localizer for the optimum performance*
- Center of tracker should be 1.5 cm below diaphragm if localizer was acquired with expiration breath hold
- Center of tracker should be 1.5 cm above diaphragm if localizer was acquired with inspiration breath hold
- Center of tracker should be placed on the diaphragm if localizer was acquired free breathing
*Please review operator manual for additional information
Expiration-Breath Hold Tracker Placement*

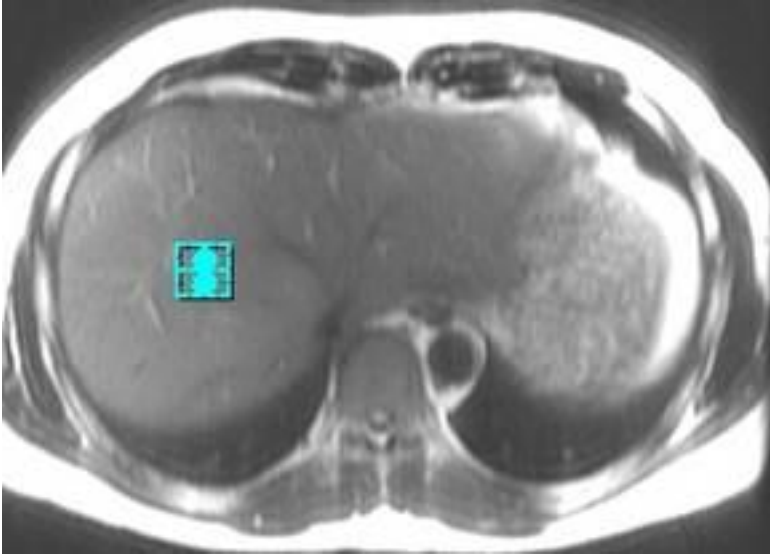
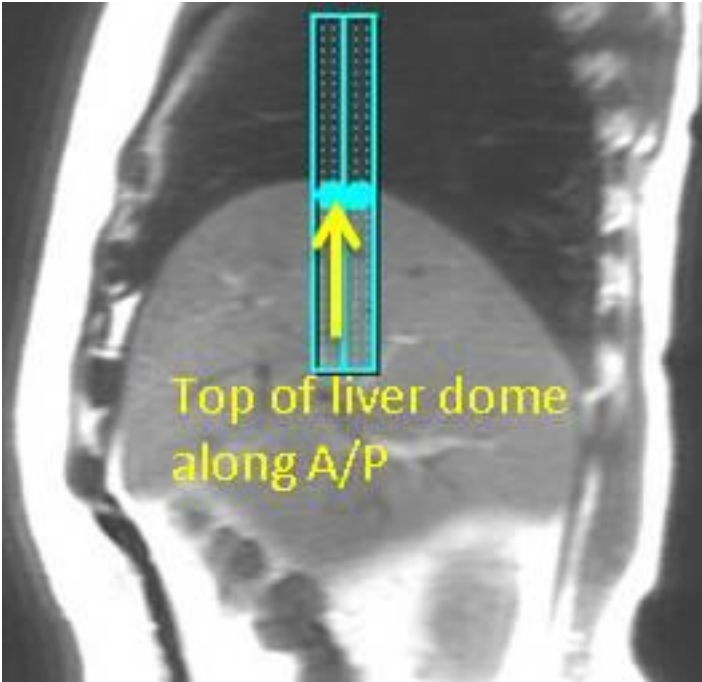


Inspiration-Breath Hold Tracker Placement

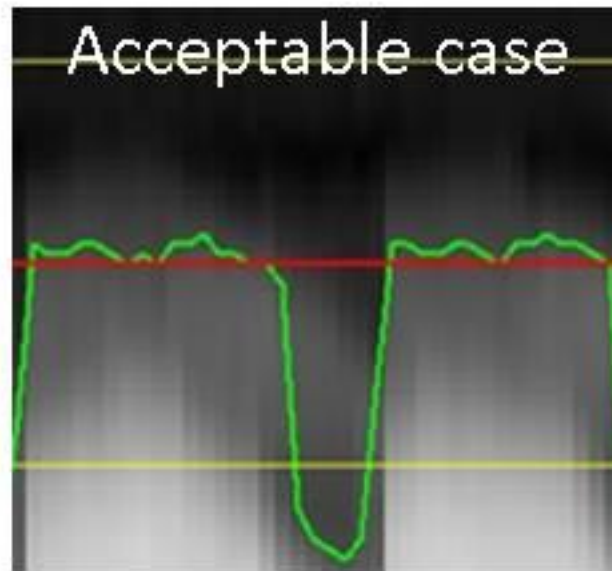


Free Breathing Tracker Placement

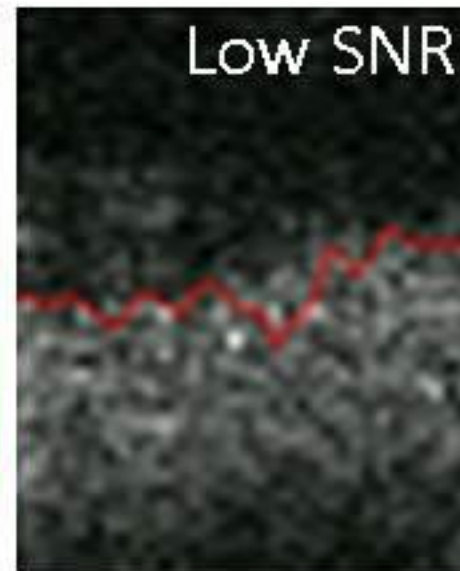




Easy Troubleshooting fo



-> No need to change anything since green waveform reflects respiratory status



-> Increase Track Thickness

Protocol: adult_abdomen_ACR MRCP

3D Ax LAVA Flex Mph BH	PATIENT POSITION		IMAGING PARAMETERS	
	Patient Entry	<i>Feet First</i>	Imaging Mode	3D
	Patient Position	<i>Supine</i>	Pulse Sequence	LAVA
	Coil Configuration	<i>Body</i>	Imaging Options	<i>EDR, Fast, ZIP2, MPhVar, ARC, Flex</i>
	Plane	<i>AXIAL</i>	IDEAL	15
	Series Description	<i>3D Ax LAVA Flex Mph BH</i>	SCAN RANGE	
	SCAN TIMING		FOV	42.0
	Flip Angle	12	Slice Thickness	4.4
	TE	<i>Minimum</i>	Location per Slab	56
	Number of Echoes	2	Overlap Locations	0
	Receiver Bandwidth	142.86	ACQ TIMING	
	IMAGE ENHANCE		Freq	300
	Filter Choice	A	Phase	200
	GATING/TRIGGER		Freq DIR	R/L
	Auto Trigger Type	<i>Off</i>	NEX	1.00
	FMRI		Phase FOV	0.80
	PSD Trigger	<i>Internal</i>	Auto Shim	<i>Auto</i>
	View Order	<i>Bottom/Up</i>	Phase Correction	<i>No</i>
	# of Repetitions REST	0	USER CVS	
	# of Repetitions ACTIVE	0	User CV15	1.00
	SAT		MULTI-PHASE	
	Tag Type	<i>None</i>	# of Phases	3
	TRICKS		Seperate Series	1
	Pause On/Off	<i>On</i>	Trigger Delay without AV	6
	Auto Subtract	0	Mask Phase	1
Auto SCIC	2	Mask Pause	1	
		DIFFUSION		
		Recon All Images	<i>On</i>	
		CONTRAST		
		Contrast Yes/No	<i>No</i>	

3D Ax LAVA Flex Mph BH