

McLeod Pavilion

Protocol: adult_abdomen_Kidneys

PATIENT POSITION		IMAGING PARAMETERS	
Patient Entry	<i>Feet First</i>	Imaging Mode	<i>2D</i>
Patient Position	<i>Supine</i>	Pulse Sequence	<i>Spin Echo</i>
Coil Configuration	<i>Body</i>	Imaging Options	<i>Seq, EDR, TRF, Fast, SS, FR, ARC</i>
Plane	<i>3-PLANE</i>	SCAN RANGE	
Series Description	<i>3-Plane Localizer</i>	FOV	<i>48.0</i>
SCAN TIMING		Slice Thickness	<i>8.0</i>
TE	<i>80.0</i>	Slice Spacing	<i>5.0</i>
Number of Echoes	<i>1</i>	ACQ TIMING	
TR	<i>525.0</i>	Freq	<i>384</i>
Receiver Bandwidth	<i>83.33</i>	Phase	<i>160</i>
IMAGE ENHANCE		Freq DIR	<i>Unswap</i>
Filter Choice	<i>None</i>	# of Acq. Before Pause	<i>0</i>
GATING/TRIGGER		Phase FOV	<i>1.00</i>
Auto Trigger Type	<i>Off</i>	Auto Shim	<i>Auto</i>
FMRI		Phase Correction	<i>No</i>
PSD Trigger	<i>Internal</i>	USER CVS	
View Order	<i>Bottom/Up</i>	User CV1	<i>1.00</i>
# of Repetitions REST	<i>0</i>	MULTI-PHASE	
# of Repetitions ACTIVE	<i>0</i>	Seperate Series	<i>0</i>
SAT		Mask Phase	<i>0</i>
Tag Type	<i>None</i>	Mask Pause	<i>0</i>
TRICKS		DIFFUSION	
Pause On/Off	<i>On</i>	Recon All Images	<i>On</i>
Auto Subtract	<i>0</i>	CONTRAST	
Auto SCIC	<i>Off</i>	Contrast Yes/No	<i>No</i>

3-Plane Localizer

3-Plane Localizer

Protocol: adult_abdomen_Kidneys

PATIENT POSITION	
Patient Entry	Feet First
Patient Position	Supine
Coil Configuration	Body
Plane	CORONAL
Series Description	Cor SSFSE Nav

SCAN TIMING	
TE	90.0
Number of Echoes	1
Receiver Bandwidth	83.33

IMAGE ENHANCE	
Filter Choice	A

GATING/TRIGGER	
Auto Trigger Type	Off
Resp. Trigger Window	30

FMRI	
PSD Trigger	Internal
View Order	Bottom/Up
# of Repetitions REST	0
# of Repetitions ACTIVE	0

SAT	
Tag Type	None

TRICKS	
Pause On/Off	On
Auto Subtract	0
Auto SCIC	2

CONTRAST	
Contrast Yes/No	No

IMAGING PARAMETERS	
Imaging Mode	2D
Pulse Sequence	Spin Echo
Imaging Options	EDR, Fast, SS, Asset, Nav

SCAN RANGE	
FOV	40.0
Slice Thickness	7.0
Slice Spacing	1.0

ACQ TIMING	
Freq	320
Phase	256
Freq DIR	S/I
NEX	1.00
Phase FOV	1.00
Auto Shim	Auto
Phase Correction	No

USER CVS	
User CV1	1.00
User CV2	184.00
User CV13	1.00

MULTI-PHASE	
Seperate Series	0
Mask Phase	0
Mask Pause	0

DIFFUSION	
Recon All Images	On

TRACKER	
Tracker Length	120.0
Tracker Thickness	20.0

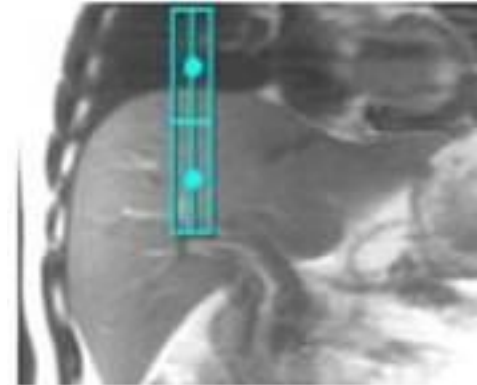
Cor SSFSE Nav

Cor SSFSE Nav

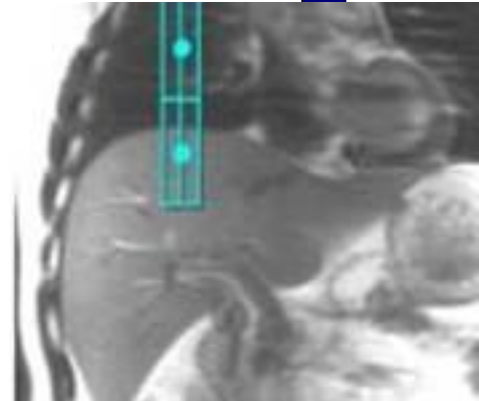
OTHERS

Protocol Notes

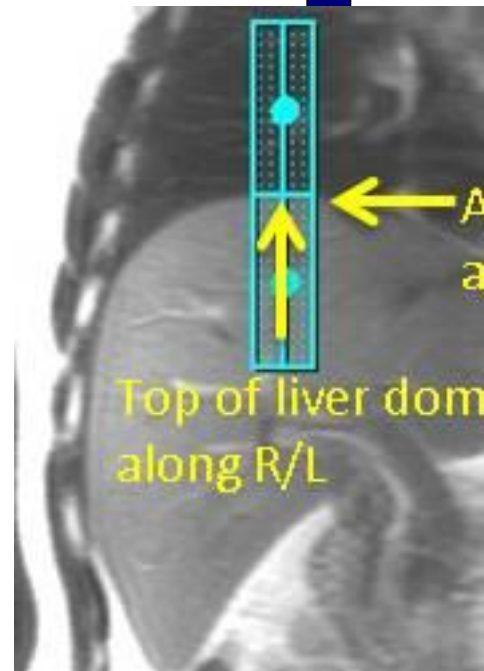
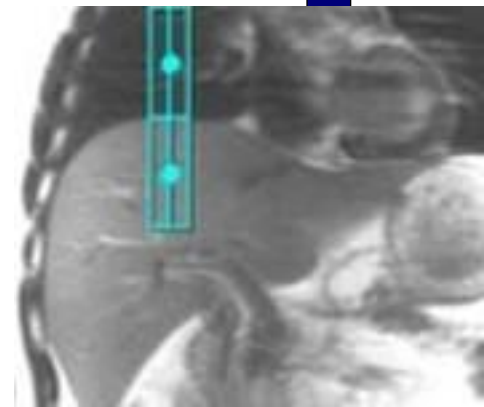
*Auto Tracker placement is turned on
Tracker will be placed automatically
Manual Placement
Instructions:
Navigator Tracker
Placement Considerations
* Place navigator tracker on a breath hold localizer for the optimum performance*
- Center of tracker should be 1.5 cm below diaphragm if localizer was acquired with expiration breath hold
- Center of tracker should be 1.5 cm above diaphragm if localizer was acquired with inspiration breath hold
- Center of tracker should be placed on the diaphragm if localizer was acquired free breathing
*Please review operator manual for additional information
Expiration-Breath Hold Tracker Placement*

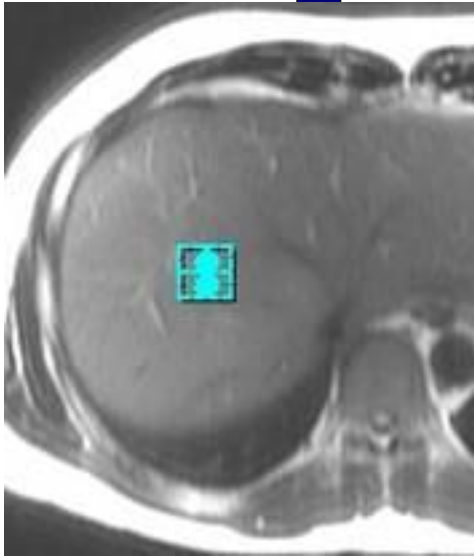
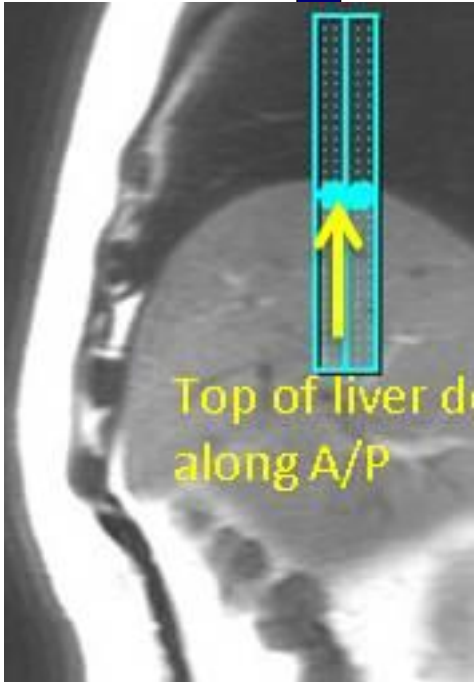


Inspiration-Breath Hold Tracker Placement

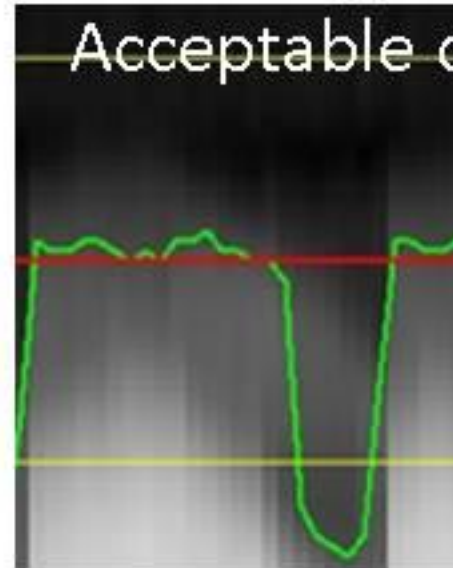


Free Breathing Tracker Placement





Easy Tro



-> No need to ch
anything since g
waveform refle
respiratory statu

Protocol: adult_abdomen_Kidneys

PATIENT POSITION		IMAGING PARAMETERS	
Patient Entry	<i>Feet First</i>	Imaging Mode	<i>2D</i>
Patient Position	<i>Supine</i>	Pulse Sequence	<i>Spin Echo</i>
Coil Configuration	<i>Body</i>	Imaging Options	<i>EDR, Fast, SS, Asset, Nav</i>
Plane	<i>AXIAL</i>	SCAN RANGE	
Series Description	<i>Ax SSFSE Nav</i>	FOV	<i>40.0</i>
SCAN TIMING		Slice Thickness	<i>7.0</i>
TE	<i>90.0</i>	Slice Spacing	<i>1.0</i>
Number of Echoes	<i>1</i>	ACQ TIMING	
Receiver Bandwidth	<i>83.33</i>	Freq	<i>320</i>
IMAGE ENHANCE		Phase	<i>256</i>
Filter Choice	<i>A</i>	Freq DIR	<i>R/L</i>
GATING/TRIGGER		NEX	<i>1.00</i>
Auto Trigger Type	<i>Off</i>	Phase FOV	<i>1.00</i>
Resp. Trigger Window	<i>30</i>	Auto Shim	<i>Auto</i>
FMRI		Phase Correction	<i>No</i>
PSD Trigger	<i>Internal</i>	USER CVS	
View Order	<i>Bottom/Up</i>	User CV1	<i>1.00</i>
# of Repetitions REST	<i>0</i>	User CV2	<i>184.00</i>
# of Repetitions ACTIVE	<i>0</i>	User CV13	<i>1.00</i>
SAT		MULTI-PHASE	
Tag Type	<i>None</i>	Seperate Series	<i>0</i>
TRICKS		Mask Phase	<i>0</i>
Pause On/Off	<i>On</i>	Mask Pause	<i>0</i>
Auto Subtract	<i>0</i>	DIFFUSION	
Auto SCIC	<i>2</i>	Recon All Images	<i>On</i>
CONTRAST		TRACKER	
Contrast Yes/No	<i>No</i>	Tracker Length	<i>120.0</i>
		Tracker Thickness	<i>20.0</i>

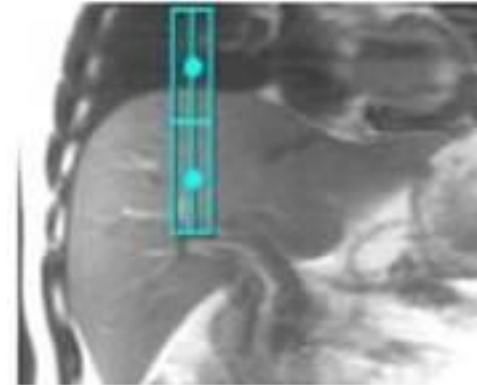
Ax SSFSE Nav

Ax SSFSE Nav

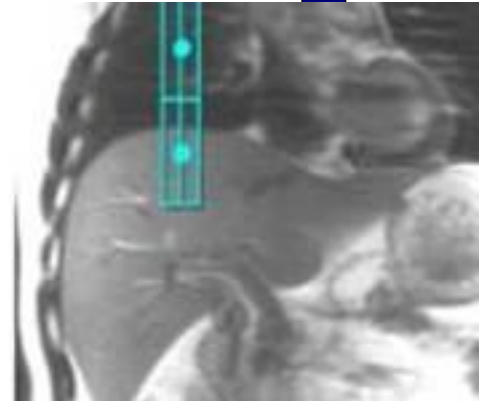
OTHERS

Protocol Notes

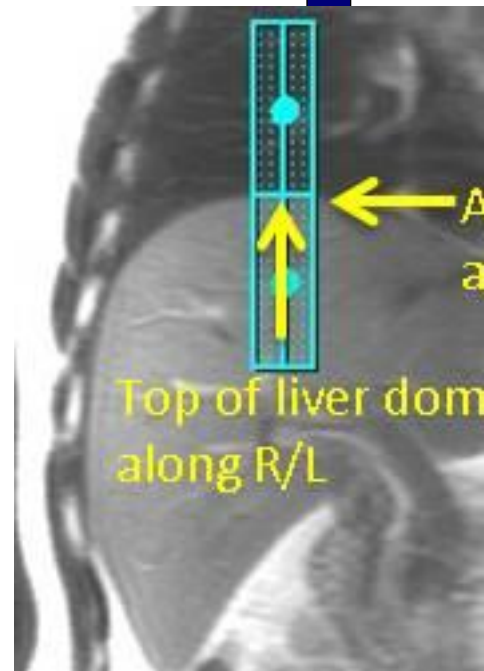
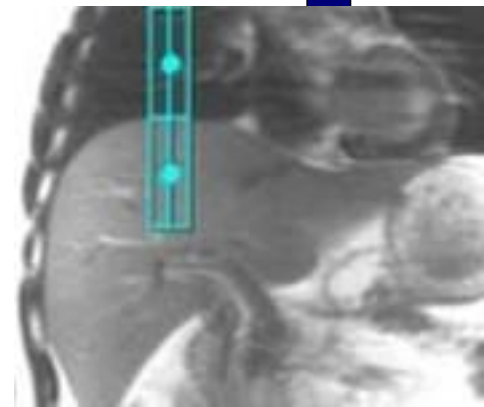
*Auto Tracker placement is turned on
Tracker will be placed automatically
Manual Placement
Instructions:
Navigator Tracker
Placement Considerations
* Place navigator tracker on a breath hold localizer for the optimum performance*
- Center of tracker should be 1.5 cm below diaphragm if localizer was acquired with expiration breath hold
- Center of tracker should be 1.5 cm above diaphragm if localizer was acquired with inspiration breath hold
- Center of tracker should be placed on the diaphragm if localizer was acquired free breathing
*Please review operator manual for additional information
Expiration-Breath Hold Tracker Placement*



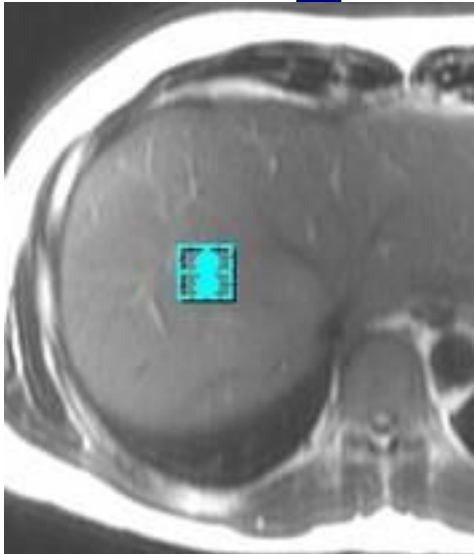
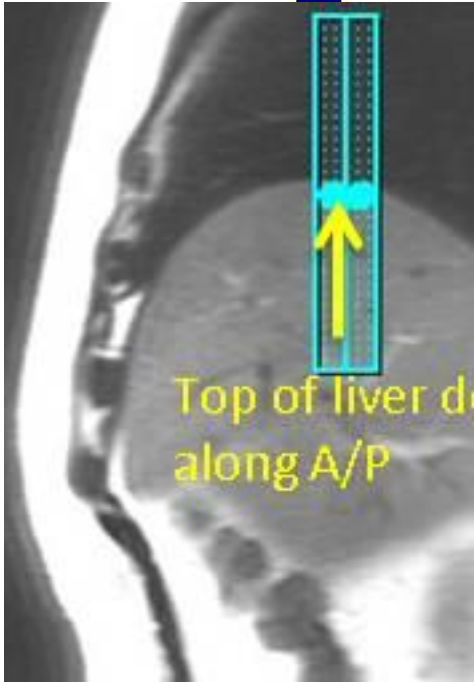
Inspiration-Breath Hold Tracker Placement



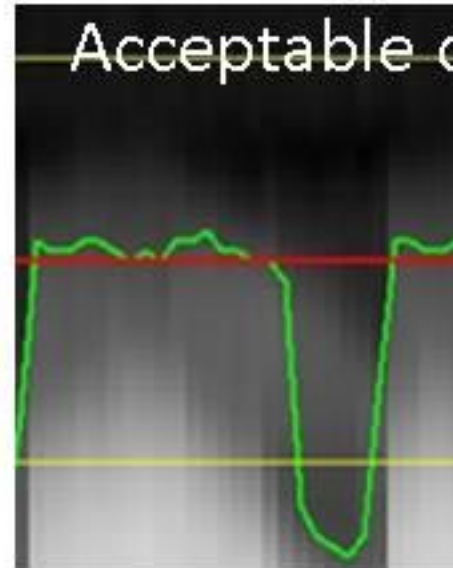
Free Breathing Tracker Placement



Top of liver dome
along R/L



Easy Tro



-> No need to check anything since green waveform reflects respiratory status

Protocol: adult_abdomen_Kidneys

PATIENT POSITION		IMAGING PARAMETERS	
Patient Entry	Feet First	Imaging Mode	2D
Patient Position	Supine	Pulse Sequence	FSE-XL
Coil Configuration	Body	Imaging Options	FC, EDR, TRF, Fast, FR, Nav, ARC
Plane	AXIAL		
Series Description	Ax T2 frFSE Nav FS		
SCAN TIMING		SCAN RANGE	
Flip Angle	111	FOV	40.0
TE	102.0	Slice Thickness	7.0
Number of Echoes	1	Slice Spacing	1.0
Echo Train Length	17		
Receiver Bandwidth	62.50	ACQ TIMING	
		Freq	384
		Phase	256
		Freq DIR	R/L
		Fat Shift DIR	Normal (L)
		NEX	2.00
		Phase FOV	1.00
		Auto Shim	Auto
		Phase Correction	No
		Flow Direction Compensation	Slice
IMAGE ENHANCE		USER CVS	
Filter Choice	A	User CV18	1.00
		User CV19	1.00
		User CV22	1.00
GATING/TRIGGER		MULTI-PHASE	
Auto Trigger Type	Off	Seperate Series	0
Resp. Trigger Window	50	Mask Phase	0
		Mask Pause	0
FMRI		DIFFUSION	
PSD Trigger	Internal	Recon All Images	On
View Order	Bottom/Up		
# of Repetitions REST	0	TRACKER	
# of Repetitions ACTIVE	0	Tracker Length	120.0
		Tracker Thickness	20.0
SAT			
Tag Type	None		
Fat/Water Saturation	Fat		
TRICKS			
Pause On/Off	On		
Auto Subtract	0		
Auto SCIC	2		
CONTRAST			
Contrast Yes/No	No		

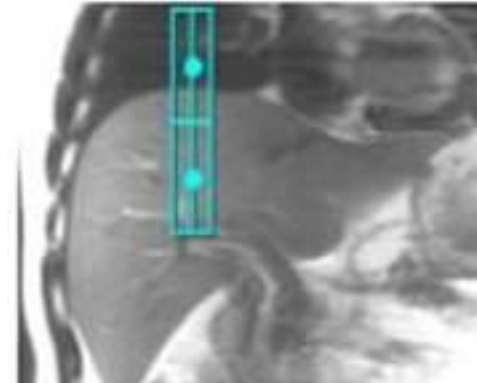
Ax T2 frFSE Nav FS

Ax T2 frFSE Nav FS

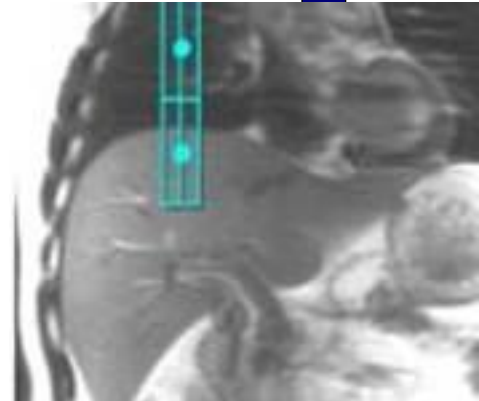
	<p>OTHERS</p>
--	---------------

Protocol Notes

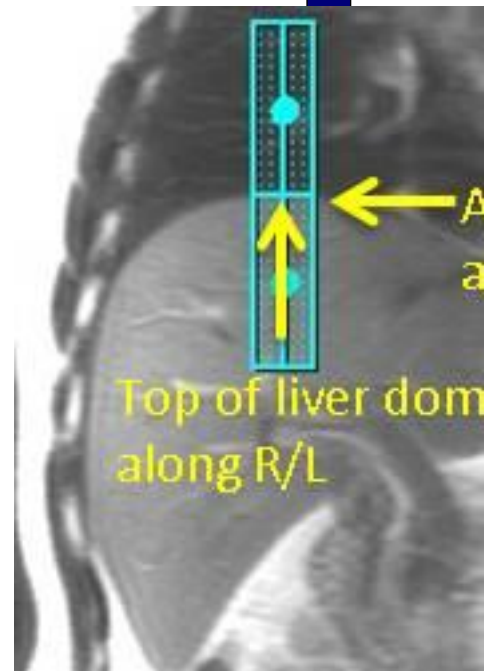
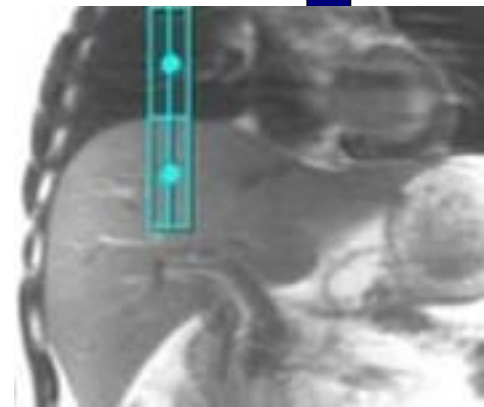
*Auto Tracker placement is turned on
Tracker will be placed automatically
Manual Placement
Instructions:
Navigator Tracker
Placement Considerations
* Place navigator tracker on a breath hold localizer for the optimum performance*
- Center of tracker should be 1.5 cm below diaphragm if localizer was acquired with expiration breath hold
- Center of tracker should be 1.5 cm above diaphragm if localizer was acquired with inspiration breath hold
- Center of tracker should be placed on the diaphragm if localizer was acquired free breathing
*Please review operator manual for additional information
Expiration-Breath Hold Tracker Placement*

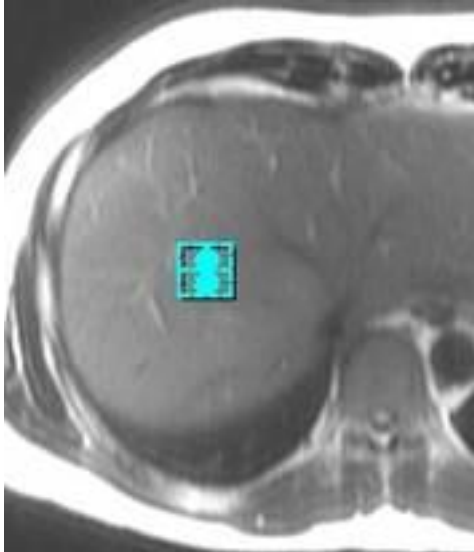
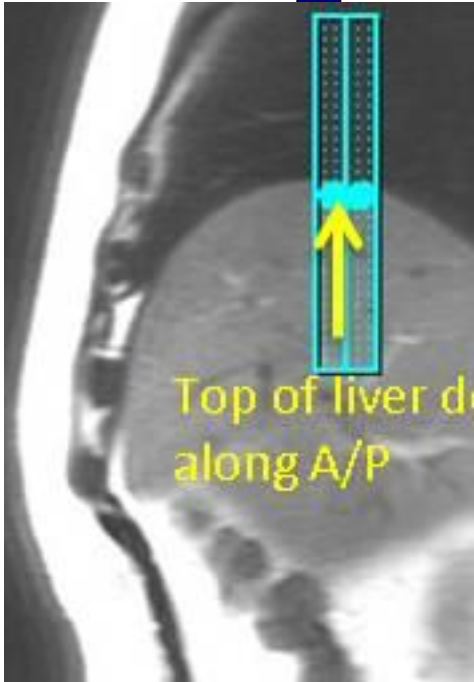


Inspiration-Breath Hold Tracker Placement

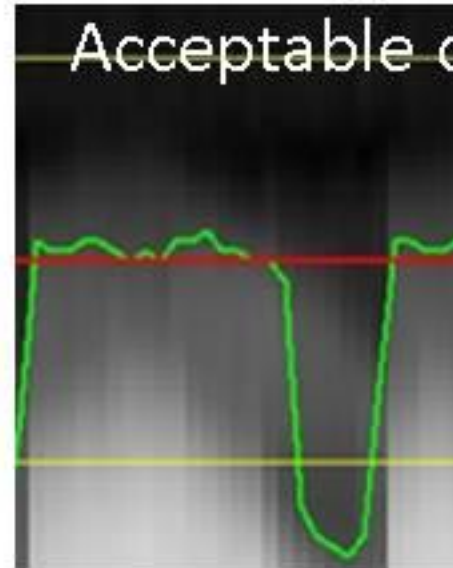


Free Breathing Tracker Placement





Easy Tro



-> No need to ch
anything since g
waveform refle
respiratory statu

McLeod Pavilion

Protocol: adult_abdomen_Kidneys

Ax FIESTA ASPIR BH	PATIENT POSITION		IMAGING PARAMETERS	
	Patient Entry	<i>Feet First</i>	Imaging Mode	<i>2D</i>
	Patient Position	<i>Supine</i>	Pulse Sequence	<i>Fiesta</i>
	Coil Configuration	<i>Body</i>	Imaging Options	<i>Seq, EDR, Fast, ARC</i>
	Plane	<i>AXIAL</i>	SCAN RANGE	
	Series Description	<i>Ax FIESTA ASPIR BH</i>	FOV	<i>40.0</i>
	SCAN TIMING		Slice Thickness	<i>7.0</i>
	Flip Angle	<i>50</i>	Slice Spacing	<i>1.0</i>
	TE	<i>Minimum</i>	ACQ TIMING	
	Number of Echoes	<i>1</i>	Freq	<i>192</i>
	TI	<i>210</i>	Phase	<i>300</i>
	Receiver Bandwidth	<i>125.00</i>	Freq DIR	<i>R/L</i>
	IMAGE ENHANCE		NEX	<i>1.00</i>
	Filter Choice	<i>None</i>	# of Acq. Before Pause	<i>0</i>
	GATING/TRIGGER		Phase FOV	<i>0.80</i>
	Auto Trigger Type	<i>Off</i>	Auto Shim	<i>Auto</i>
	MULTI-PHASE		Phase Correction	<i>No</i>
	Seperate Series	<i>0</i>	FMRI	
	Mask Phase	<i>0</i>	PSD Trigger	<i>Internal</i>
	Mask Pause	<i>0</i>	View Order	<i>Bottom/Up</i>
DIFFUSION		# of Repetitions REST	<i>0</i>	
Recon All Images	<i>On</i>	# of Repetitions ACTIVE	<i>0</i>	
CONTRAST		SAT		
Contrast Yes/No	<i>No</i>	Tag Type	<i>None</i>	
		Fat/Water Saturation	<i>Fat Special</i>	
		TRICKS		
		Pause On/Off	<i>On</i>	
		Auto Subtract	<i>0</i>	
		Auto SCIC	<i>Off</i>	
		OTHERS		
		Protocol Notes	<i>Tip: - Place a shim volume over the liver to help reduce artifacts. - TI time for ASPIR (ChemSAT) can be modified by changing the Prep Time.</i>	

Ax FIESTA ASPIR BH

Protocol: adult_abdomen_Kidneys

PATIENT POSITION		IMAGING PARAMETERS	
Patient Entry	<i>Feet First</i>	Imaging Mode	<i>2D</i>
Patient Position	<i>Supine</i>	Pulse Sequence	<i>Spin Echo</i>
Coil Configuration	<i>Body</i>	Imaging Options	<i>EDR, EPI, DIFF, Asset, Nav</i>
Plane	<i>AXIAL</i>	SCAN RANGE	
Series Description	<i>Ax DWI 3:1 B-800-500-50</i>	FOV	<i>40.0</i>
SCAN TIMING		Slice Thickness	<i>7.0</i>
TE	<i>Minimum</i>	Slice Spacing	<i>1.0</i>
Number of Echoes	<i>1</i>	ACQ TIMING	
Number of Shots	<i>1</i>	Freq	<i>80</i>
IMAGE ENHANCE		Phase	<i>128</i>
Filter Choice	<i>None</i>	Freq DIR	<i>R/L</i>
GATING/TRIGGER		Phase FOV	<i>1.00</i>
Auto Trigger Type	<i>Off</i>	Auto Shim	<i>Auto</i>
Resp. Trigger Window	<i>30</i>	Phase Correction	<i>Yes</i>
FMRI		USER CVS	
PSD Trigger	<i>Internal</i>	User CV0	<i>1.00</i>
View Order	<i>Bottom/Up</i>	User CV17	<i>1.00</i>
# of Repetitions REST	<i>0</i>	User CV18	<i>1.00</i>
# of Repetitions ACTIVE	<i>0</i>	MULTI-PHASE	
SAT		Seperate Series	<i>0</i>
Tag Type	<i>None</i>	Mask Phase	<i>0</i>
Fat/Water Saturation	<i>Fat</i>	Mask Pause	<i>0</i>
TRICKS		DIFFUSION	
Pause On/Off	<i>On</i>	Optimized TE	<i>Yes</i>
Auto Subtract	<i>0</i>	Diffusion Directions	<i>64</i>
Auto SCIC	<i>2</i>	Number of Diffusion Directions	<i>1</i>
CONTRAST		Number of T2 Images	<i>0</i>
Contrast Yes/No	<i>No</i>	Dual Spin Echo	<i>Off</i>
		Recon All Images	<i>On</i>
		TRACKER	
		Tracker Length	<i>120.0</i>
		Tracker Thickness	<i>20.0</i>

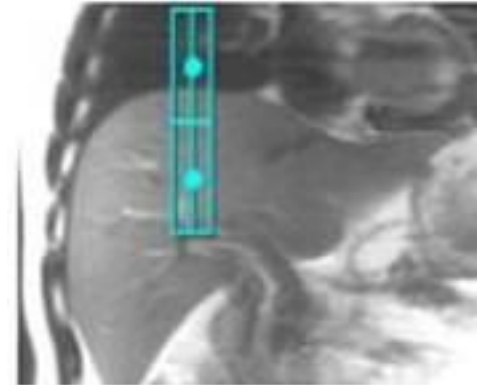
Ax DWI 3:1 B-800-500-50

Ax DWI 3:1 B-800-500-50

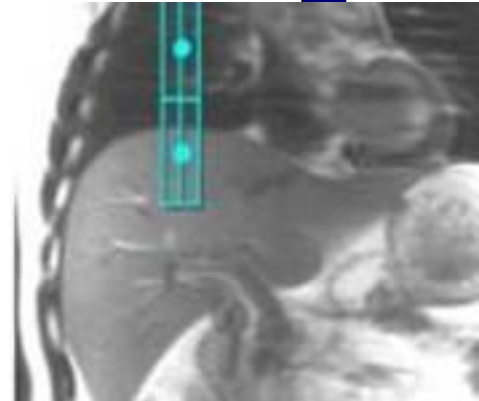
	<p>OTHERS</p>
--	---------------

Protocol Notes

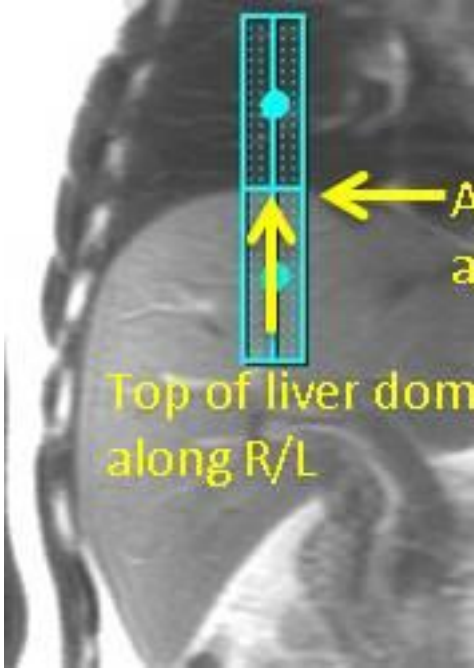
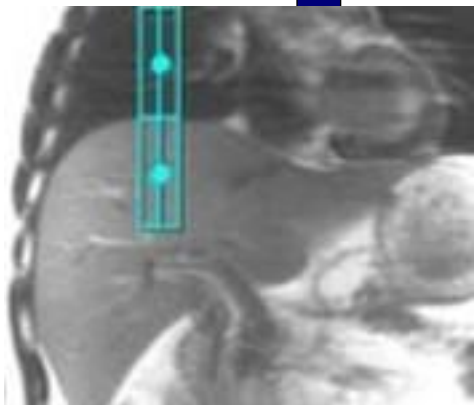
*Auto Tracker placement is turned on
Tracker will be placed automatically
Manual Placement Instructions:
Navigator Tracker Placement Considerations
* Place navigator tracker on a breath hold localizer for the optimum performance*
- Center of tracker should be 1.5 cm below diaphragm if localizer was acquired with expiration breath hold
- Center of tracker should be 1.5 cm above diaphragm if localizer was acquired with inspiration breath hold
- Center of tracker should be placed on the diaphragm if localizer was acquired free breathing
*Please review operator manual for additional information
Expiration-Breath Hold Tracker Placement*

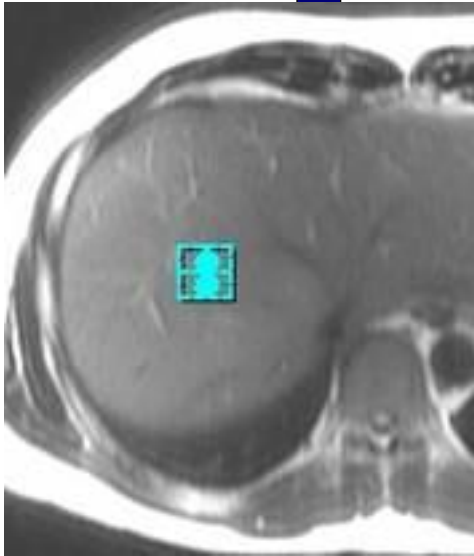
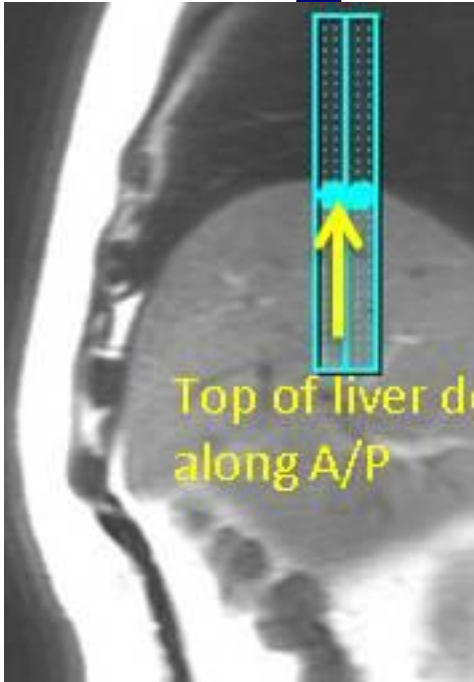


Inspiration-Breath Hold Tracker Placement

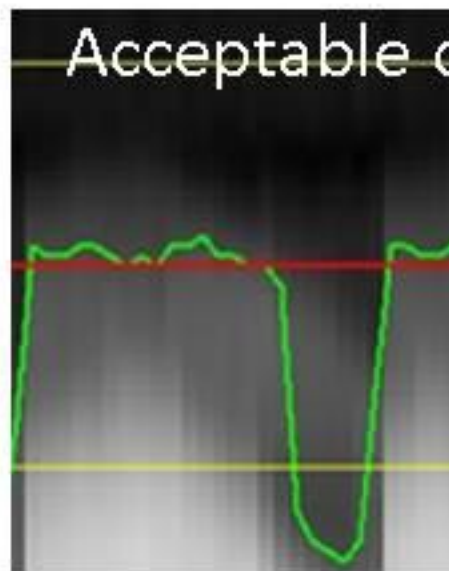


Free Breathing Tracker Placement





Easy Tro



-> No need to ch
anything since g
waveform refle
respiratory statu

McLeod Pavilion

Protocol: adult_abdomen_Kidneys

3D Ax LAVA Flex Pre/AV	PATIENT POSITION		IMAGING PARAMETERS	
	Patient Entry	<i>Feet First</i>	Imaging Mode	<i>3D</i>
	Patient Position	<i>Supine</i>	Pulse Sequence	<i>LAVA</i>
	Coil Configuration	<i>Body</i>	Imaging Options	<i>EDR, Fast, ZIP2, MPhVar, ARC, Flex</i>
	Plane	<i>AXIAL</i>	IDEAL	<i>15</i>
	Series Description	<i>3D Ax LAVA Flex Pre/AV</i>	SCAN RANGE	
	SCAN TIMING		FOV	<i>42.0</i>
	Flip Angle	<i>12</i>	Slice Thickness	<i>4.4</i>
	TE	<i>Minimum</i>	Location per Slab	<i>56</i>
	Number of Echoes	<i>2</i>	Overlap Locations	<i>0</i>
	Receiver Bandwidth	<i>142.86</i>	ACQ TIMING	
	IMAGE ENHANCE		Freq	<i>300</i>
	Filter Choice	<i>A</i>	Phase	<i>200</i>
	GATING/TRIGGER		Freq DIR	<i>R/L</i>
	Auto Trigger Type	<i>Off</i>	NEX	<i>1.00</i>
	FMRI		Phase FOV	<i>1.10</i>
	PSD Trigger	<i>Internal</i>	Auto Shim	<i>Auto</i>
	View Order	<i>Bottom/Up</i>	Phase Correction	<i>No</i>
	# of Repetitions REST	<i>0</i>	USER CVS	
	# of Repetitions ACTIVE	<i>0</i>	User CV6	<i>1.00</i>
SAT		MULTI-PHASE		
Tag Type	<i>None</i>	# of Phases	<i>3</i>	
TRICKS		Seperate Series	<i>1</i>	
Pause On/Off	<i>On</i>	Trigger Delay without AV	<i>6</i>	
Auto Subtract	<i>4099</i>	Mask Phase	<i>1</i>	
Auto SCIC	<i>2</i>	Mask Pause	<i>1</i>	
		DIFFUSION		
		Recon All Images	<i>On</i>	
		CONTRAST		
		Contrast Yes/No	<i>No</i>	

3D Ax LAVA Flex Pre/AV

McLeod Pavilion

Protocol: adult_abdomen_Kidneys

3D Cor LAVA Flex BH	PATIENT POSITION		IMAGING PARAMETERS		3D Cor LAVA Flex BH
	Patient Entry	<i>Feet First</i>	Imaging Mode	<i>3D</i>	
	Patient Position	<i>Supine</i>	Pulse Sequence	<i>LAVA</i>	
	Coil Configuration	<i>Body</i>	Imaging Options	<i>EDR, Fast, ZIP2, ARC, Flex</i>	
	Plane	<i>CORONAL</i>	IDEAL	<i>3</i>	
	Series Description	<i>3D Cor LAVA Flex BH</i>	SCAN RANGE		
	SCAN TIMING		FOV	<i>44.0</i>	
	Flip Angle	<i>12</i>	Slice Thickness	<i>4.4</i>	
	TE	<i>Minimum</i>	Location per Slab	<i>56</i>	
	Number of Echoes	<i>2</i>	Overlap Locations	<i>0</i>	
	Receiver Bandwidth	<i>142.86</i>	ACQ TIMING		
	IMAGE ENHANCE		Freq	<i>300</i>	
	Filter Choice	<i>A</i>	Phase	<i>200</i>	
	GATING/TRIGGER		Freq DIR	<i>S/I</i>	
	Auto Trigger Type	<i>Off</i>	NEX	<i>1.00</i>	
	FMRI		Phase FOV	<i>1.00</i>	
	PSD Trigger	<i>Internal</i>	Auto Shim	<i>Auto</i>	
	View Order	<i>Bottom/Up</i>	Phase Correction	<i>No</i>	
	# of Repetitions REST	<i>0</i>	USER CVS		
	# of Repetitions ACTIVE	<i>0</i>	User CV4	<i>6.60</i>	
	SAT		User CV6	<i>1.00</i>	
	Tag Type	<i>None</i>	MULTI-PHASE		
	TRICKS		Seperate Series	<i>0</i>	
	Pause On/Off	<i>On</i>	Trigger Delay without AV	<i>6.6</i>	
	Auto Subtract	<i>0</i>	Mask Phase	<i>0</i>	
Auto SCIC	<i>2</i>	Mask Pause	<i>0</i>		
		DIFFUSION			
		Recon All Images	<i>On</i>		
		CONTRAST			
		Contrast Yes/No	<i>No</i>		

McLeod Pavilion

Protocol: adult_abdomen_Kidneys

3D Ax LAVA Flex 3MIN	PATIENT POSITION		IMAGING PARAMETERS		3D Ax LAVA Flex 3MIN
	Patient Entry	<i>Feet First</i>	Imaging Mode	<i>3D</i>	
	Patient Position	<i>Supine</i>	Pulse Sequence	<i>LAVA</i>	
	Coil Configuration	<i>Body</i>	Imaging Options	<i>EDR, Fast, ZIP2, ARC, Flex</i>	
	Plane	<i>AXIAL</i>	IDEAL	<i>3</i>	
	Series Description	<i>3D Ax LAVA Flex 3MIN</i>	SCAN RANGE		
	SCAN TIMING		FOV	<i>42.0</i>	
	Flip Angle	<i>12</i>	Slice Thickness	<i>4.4</i>	
	TE	<i>Minimum</i>	Location per Slab	<i>56</i>	
	Number of Echoes	<i>2</i>	Overlap Locations	<i>0</i>	
	Receiver Bandwidth	<i>142.86</i>	ACQ TIMING		
	IMAGE ENHANCE		Freq	<i>300</i>	
	Filter Choice	<i>A</i>	Phase	<i>200</i>	
	GATING/TRIGGER		Freq DIR	<i>R/L</i>	
	Auto Trigger Type	<i>Off</i>	NEX	<i>1.00</i>	
	FMRI		Phase FOV	<i>1.10</i>	
	PSD Trigger	<i>Internal</i>	Auto Shim	<i>Auto</i>	
	View Order	<i>Bottom/Up</i>	Phase Correction	<i>No</i>	
	# of Repetitions REST	<i>0</i>	USER CVS		
	# of Repetitions ACTIVE	<i>0</i>	User CV4	<i>6.60</i>	
	SAT		User CV6	<i>1.00</i>	
	Tag Type	<i>None</i>	MULTI-PHASE		
	TRICKS		Seperate Series	<i>0</i>	
	Pause On/Off	<i>On</i>	Trigger Delay without AV	<i>6.6</i>	
	Auto Subtract	<i>0</i>	Mask Phase	<i>0</i>	
Auto SCIC	<i>2</i>	Mask Pause	<i>0</i>		
		DIFFUSION			
		Recon All Images	<i>On</i>		
		CONTRAST			
		Contrast Yes/No	<i>No</i>		

McLeod Pavilion

Protocol: adult_abdomen_Kidneys

3D Ax LAVA Flex 6MIN	PATIENT POSITION		IMAGING PARAMETERS	
	Patient Entry	<i>Feet First</i>	Imaging Mode	<i>3D</i>
	Patient Position	<i>Supine</i>	Pulse Sequence	<i>LAVA</i>
	Coil Configuration	<i>Body</i>	Imaging Options	<i>EDR, Fast, ZIP2, ARC, Flex</i>
	Plane	<i>AXIAL</i>	IDEAL	<i>3</i>
	Series Description	<i>3D Ax LAVA Flex 6MIN</i>	SCAN RANGE	
	SCAN TIMING		FOV	<i>42.0</i>
	Flip Angle	<i>12</i>	Slice Thickness	<i>4.4</i>
	TE	<i>Minimum</i>	Location per Slab	<i>56</i>
	Number of Echoes	<i>2</i>	Overlap Locations	<i>0</i>
	Receiver Bandwidth	<i>142.86</i>	ACQ TIMING	
	IMAGE ENHANCE		Freq	<i>300</i>
	Filter Choice	<i>A</i>	Phase	<i>200</i>
	GATING/TRIGGER		Freq DIR	<i>R/L</i>
	Auto Trigger Type	<i>Off</i>	NEX	<i>1.00</i>
	FMRI		Phase FOV	<i>1.10</i>
	PSD Trigger	<i>Internal</i>	Auto Shim	<i>Auto</i>
	View Order	<i>Bottom/Up</i>	Phase Correction	<i>No</i>
	# of Repetitions REST	<i>0</i>	USER CVS	
	# of Repetitions ACTIVE	<i>0</i>	User CV4	<i>6.60</i>
	SAT		User CV6	<i>1.00</i>
	Tag Type	<i>None</i>	MULTI-PHASE	
	TRICKS		Seperate Series	<i>0</i>
	Pause On/Off	<i>On</i>	Trigger Delay without AV	<i>6.6</i>
	Auto Subtract	<i>0</i>	Mask Phase	<i>0</i>
Auto SCIC	<i>2</i>	Mask Pause	<i>0</i>	
		DIFFUSION		
		Recon All Images	<i>On</i>	
		CONTRAST		
		Contrast Yes/No	<i>No</i>	

3D Ax LAVA Flex 6MIN

McLeod Pavilion

Protocol: adult_abdomen_Kidneys

+C Cor T1 FSPGR BH FS	PATIENT POSITION		IMAGING PARAMETERS		+C Cor T1 FSPGR BH FS
	Patient Entry	<i>Feet First</i>	Imaging Mode	<i>2D</i>	
	Patient Position	<i>Supine</i>	Pulse Sequence	<i>SPGR</i>	
	Coil Configuration	<i>Body</i>	Imaging Options	<i>EDR, Fast, ZIP512, Asset</i>	
	Plane	<i>CORONAL</i>	SCAN RANGE		
	Series Description	<i>+C Cor T1 FSPGR BH FS</i>	FOV	<i>40.0</i>	
	SCAN TIMING		Slice Thickness	<i>7.0</i>	
	Flip Angle	<i>60</i>	Slice Spacing	<i>1.0</i>	
	TE	<i>In Phase</i>	ACQ TIMING		
	Number of Echoes	<i>1</i>	Freq	<i>320</i>	
	TR	<i>195.0</i>	Phase	<i>192</i>	
	Receiver Bandwidth	<i>83.33</i>	Freq DIR	<i>S/I</i>	
	IMAGE ENHANCE		NEX	<i>1.00</i>	
	Filter Choice	<i>None</i>	Phase FOV	<i>1.00</i>	
	GATING/TRIGGER		Auto Shim	<i>Auto</i>	
	Auto Trigger Type	<i>Off</i>	Phase Correction	<i>No</i>	
	MULTI-PHASE		FMRI		
	Seperate Series	<i>0</i>	PSD Trigger	<i>Internal</i>	
	Mask Phase	<i>0</i>	Slice Order	<i>Interleaved</i>	
	Mask Pause	<i>0</i>	View Order	<i>Bottom/Up</i>	
	DIFFUSION		# of Repetitions REST	<i>0</i>	
	Recon All Images	<i>On</i>	# of Repetitions ACTIVE	<i>0</i>	
	CONTRAST		SAT		
	Contrast Yes/No	<i>No</i>	Tag Type	<i>None</i>	
			Fat/Water Saturation	<i>Fat</i>	
		TRICKS			
		Pause On/Off	<i>On</i>		
		Auto Subtract	<i>0</i>		
		Auto SCIC	<i>2</i>		

McLeod Pavilion

Protocol: adult_abdomen_Kidneys

--OPTIONS--	PATIENT POSITION		IMAGING PARAMETERS	
	Patient Entry	<i>Feet First</i>	Imaging Mode	<i>2D</i>
	Patient Position	<i>Supine</i>	Pulse Sequence	<i>Spin Echo</i>
	Coil Configuration	<i>Body</i>	Imaging Options	<i>Seq, EDR, TRF, Fast, SS, FR, ARC</i>
	Plane	<i>3-PLANE</i>	SCAN RANGE	
	Series Description	<i>--OPTIONS--</i>	FOV	<i>48.0</i>
	SCAN TIMING		Slice Thickness	<i>8.0</i>
	TE	<i>80.0</i>	Slice Spacing	<i>5.0</i>
	Number of Echoes	<i>1</i>	ACQ TIMING	
	TR	<i>525.0</i>	Freq	<i>384</i>
	Receiver Bandwidth	<i>83.33</i>	Phase	<i>160</i>
	IMAGE ENHANCE		Freq DIR	<i>Unswap</i>
	Filter Choice	<i>None</i>	# of Acq. Before Pause	<i>0</i>
	GATING/TRIGGER		Phase FOV	<i>1.00</i>
	Auto Trigger Type	<i>Off</i>	Auto Shim	<i>Auto</i>
	FMRI		Phase Correction	<i>No</i>
	PSD Trigger	<i>Internal</i>	USER CVS	
	View Order	<i>Bottom/Up</i>	User CV1	<i>1.00</i>
	# of Repetitions REST	<i>0</i>	MULTI-PHASE	
	# of Repetitions ACTIVE	<i>0</i>	Seperate Series	<i>0</i>
	SAT		Mask Phase	<i>0</i>
	Tag Type	<i>None</i>	Mask Pause	<i>0</i>
	TRICKS		DIFFUSION	
	Pause On/Off	<i>On</i>	Recon All Images	<i>On</i>
	Auto Subtract	<i>0</i>	CONTRAST	
Auto SCIC	<i>Off</i>	Contrast Yes/No	<i>No</i>	

--OPTIONS--

McLeod Pavilion

Protocol: adult_abdomen_Kidneys

PATIENT POSITION		IMAGING PARAMETERS	
Patient Entry	<i>Feet First</i>	Imaging Mode	<i>2D</i>
Patient Position	<i>Supine</i>	Pulse Sequence	<i>SPGR</i>
Coil Configuration	<i>Body</i>	Imaging Options	<i>EDR, Fast, ARC</i>
Plane	<i>AXIAL</i>	SCAN RANGE	
Series Description	<i>Ax Dual Echo BH</i>	FOV	<i>46.0</i>
SCAN TIMING		Slice Thickness	<i>7.0</i>
Flip Angle	<i>55</i>	Slice Spacing	<i>1.0</i>
Number of Echoes	<i>2</i>	ACQ TIMING	
TR	<i>150.0</i>	Freq	<i>288</i>
IMAGE ENHANCE		Phase	<i>192</i>
Filter Choice	<i>A</i>	Freq DIR	<i>R/L</i>
GATING/TRIGGER		Phase FOV	<i>0.80</i>
Auto Trigger Type	<i>Off</i>	Auto Shim	<i>Auto</i>
MULTI-PHASE		Phase Correction	<i>No</i>
Seperate Series	<i>0</i>	FMRI	
Mask Phase	<i>0</i>	PSD Trigger	<i>Internal</i>
Mask Pause	<i>0</i>	View Order	<i>Bottom/Up</i>
DIFFUSION		# of Repetitions REST	<i>0</i>
Recon All Images	<i>On</i>	# of Repetitions ACTIVE	<i>0</i>
CONTRAST		SAT	
Contrast Yes/No	<i>No</i>	Tag Type	<i>None</i>
		TRICKS	
		Pause On/Off	<i>On</i>
		Auto Subtract	<i>0</i>
		Auto SCIC	<i>2</i>

Ax Dual Echo BH

Ax Dual Echo BH