

McLeod Pavilion

Protocol: adult\_abdomen\_MRCP WITHOUT

PATIENT POSITION		IMAGING PARAMETERS	
Patient Entry	<i>Feet First</i>	Imaging Mode	<i>2D</i>
Patient Position	<i>Supine</i>	Pulse Sequence	<i>Spin Echo</i>
Coil Configuration	<i>Body</i>	Imaging Options	<i>Seq, EDR, TRF, Fast, SS, FR, ARC</i>
Plane	<i>3-PLANE</i>	<b>SCAN RANGE</b>	
Series Description	<i>3-Plane Localizer</i>	FOV	<i>48.0</i>
<b>SCAN TIMING</b>		Slice Thickness	<i>8.0</i>
TE	<i>80.0</i>	Slice Spacing	<i>5.0</i>
Number of Echoes	<i>1</i>	<b>ACQ TIMING</b>	
TR	<i>525.0</i>	Freq	<i>384</i>
Receiver Bandwidth	<i>83.33</i>	Phase	<i>160</i>
<b>IMAGE ENHANCE</b>		Freq DIR	<i>Unswap</i>
Filter Choice	<i>None</i>	# of Acq. Before Pause	<i>0</i>
<b>GATING/TRIGGER</b>		Phase FOV	<i>1.00</i>
Auto Trigger Type	<i>Off</i>	Auto Shim	<i>Auto</i>
<b>FMRI</b>		Phase Correction	<i>No</i>
PSD Trigger	<i>Internal</i>	<b>USER CVS</b>	
View Order	<i>Bottom/Up</i>	User CV1	<i>1.00</i>
# of Repetitions REST	<i>0</i>	<b>MULTI-PHASE</b>	
# of Repetitions ACTIVE	<i>0</i>	Seperate Series	<i>0</i>
<b>SAT</b>		Mask Phase	<i>0</i>
Tag Type	<i>None</i>	Mask Pause	<i>0</i>
<b>TRICKS</b>		<b>DIFFUSION</b>	
Pause On/Off	<i>On</i>	Recon All Images	<i>On</i>
Auto Subtract	<i>0</i>	<b>CONTRAST</b>	
Auto SCIC	<i>Off</i>	Contrast Yes/No	<i>No</i>

3-Plane Localizer

3-Plane Localizer

McLeod Pavilion

Protocol: adult\_abdomen\_MRCP WITHOUT

PATIENT POSITION		IMAGING PARAMETERS	
Patient Entry	Feet First	Imaging Mode	2D
Patient Position	Supine	Pulse Sequence	Spin Echo
Coil Configuration	Body	Imaging Options	Seq, EDR, Fast, SS, FR, ARC
Plane	3-PLANE		
Series Description	3-Plane Localizer BH		
SCAN TIMING		SCAN RANGE	
TE	70.0	FOV	48.0
Number of Echoes	1	Slice Thickness	15.0
TR	Minimum	Slice Spacing	7.0
Receiver Bandwidth	83.33		
IMAGE ENHANCE		ACQ TIMING	
Filter Choice	None	Freq	256
		Phase	160
		Freq DIR	Unswap
		# of Acq. Before Pause	0
		Phase FOV	1.00
		Auto Shim	Auto
		Phase Correction	No
GATING/TRIGGER		USER CVS	
Auto Trigger Type	Off	User CV2	240.00
		User CV13	1.00
FMRI		MULTI-PHASE	
PSD Trigger	Internal	Seperate Series	0
View Order	Bottom/Up	Mask Phase	0
# of Repetitions REST	0	Mask Pause	0
# of Repetitions ACTIVE	0		
SAT		DIFFUSION	
Tag Type	None	Recon All Images	On
TRICKS		CONTRAST	
Pause On/Off	On	Contrast Yes/No	No
Auto Subtract	0		
Auto SCIC	Off		
OTHERS			
Protocol Notes	Navigator Tracker Placement Considerations * Use breath hold 3 plane localizer for navigator tracker placement for optimal results*		

3-Plane Localizer BH

3-Plane Localizer BH

McLeod Pavilion

Protocol: adult\_abdomen\_MRCP WITHOUT

Ax FIESTA ASPIR BH	<b>PATIENT POSITION</b>		<b>IMAGING PARAMETERS</b>	
	Patient Entry	<i>Feet First</i>	Imaging Mode	<i>2D</i>
	Patient Position	<i>Supine</i>	Pulse Sequence	<i>Fiesta</i>
	Coil Configuration	<i>Body</i>	Imaging Options	<i>Seq, EDR, Fast, ARC</i>
	Plane	<i>AXIAL</i>	<b>SCAN RANGE</b>	
	Series Description	<i>Ax FIESTA ASPIR BH</i>	FOV	<i>40.0</i>
	<b>SCAN TIMING</b>		Slice Thickness	<i>7.0</i>
	Flip Angle	<i>50</i>	Slice Spacing	<i>1.0</i>
	TE	<i>Minimum</i>	<b>ACQ TIMING</b>	
	Number of Echoes	<i>1</i>	Freq	<i>192</i>
	TI	<i>210</i>	Phase	<i>300</i>
	Receiver Bandwidth	<i>125.00</i>	Freq DIR	<i>R/L</i>
	<b>IMAGE ENHANCE</b>		NEX	<i>1.00</i>
	Filter Choice	<i>None</i>	# of Acq. Before Pause	<i>0</i>
	<b>GATING/TRIGGER</b>		Phase FOV	<i>0.80</i>
	Auto Trigger Type	<i>Off</i>	Auto Shim	<i>Auto</i>
	<b>MULTI-PHASE</b>		Phase Correction	<i>No</i>
	Seperate Series	<i>0</i>	<b>FMRI</b>	
	Mask Phase	<i>0</i>	PSD Trigger	<i>Internal</i>
	Mask Pause	<i>0</i>	Slice Order	<i>Interleaved</i>
<b>DIFFUSION</b>		View Order	<i>Bottom/Up</i>	
Recon All Images	<i>On</i>	# of Repetitions REST	<i>0</i>	
<b>CONTRAST</b>		# of Repetitions ACTIVE	<i>0</i>	
Contrast Yes/No	<i>No</i>	<b>SAT</b>		
		Tag Type	<i>None</i>	
		Fat/Water Saturation	<i>Fat Special</i>	
		<b>TRICKS</b>		
		Pause On/Off	<i>On</i>	
		Auto Subtract	<i>0</i>	
		Auto SCIC	<i>Off</i>	
		<b>OTHERS</b>		
		Protocol Notes	<i>Tip: - Place a shim volume over the liver to help reduce artifacts. - TI time for ASPIR (ChemSAT) can be modified by changing the Prep Time.</i>	

Ax FIESTA ASPIR BH

Protocol: adult\_abdomen\_MRCP WITHOUT

PATIENT POSITION		IMAGING PARAMETERS	
Patient Entry	<i>Feet First</i>	Imaging Mode	<i>2D</i>
Patient Position	<i>Supine</i>	Pulse Sequence	<i>Spin Echo</i>
Coil Configuration	<i>Body</i>	Imaging Options	<i>EDR, Fast, SS, Nav, ARC</i>
Plane	<i>CORONAL</i>	SCAN RANGE	
Series Description	<i>Cor SSFSE Nav</i>	FOV	<i>40.0</i>
SCAN TIMING		Slice Thickness	<i>7.0</i>
TE	<i>90.0</i>	Slice Spacing	<i>1.0</i>
Number of Echoes	<i>1</i>	ACQ TIMING	
Receiver Bandwidth	<i>83.33</i>	Freq	<i>320</i>
IMAGE ENHANCE		Phase	<i>256</i>
Filter Choice	<i>A</i>	Freq DIR	<i>S/I</i>
GATING/TRIGGER		NEX	<i>1.00</i>
Auto Trigger Type	<i>Off</i>	Phase FOV	<i>1.00</i>
Resp. Trigger Window	<i>30</i>	Auto Shim	<i>Auto</i>
FMRI		Phase Correction	<i>No</i>
PSD Trigger	<i>Internal</i>	USER CVS	
Slice Order	<i>Interleaved</i>	User CV1	<i>1.00</i>
View Order	<i>Bottom/Up</i>	User CV2	<i>240.00</i>
# of Repetitions REST	<i>0</i>	User CV13	<i>1.00</i>
# of Repetitions ACTIVE	<i>0</i>	MULTI-PHASE	
SAT		Seperate Series	<i>0</i>
Tag Type	<i>None</i>	Mask Phase	<i>0</i>
TRICKS		Mask Pause	<i>0</i>
Pause On/Off	<i>On</i>	DIFFUSION	
Auto Subtract	<i>0</i>	Recon All Images	<i>On</i>
Auto SCIC	<i>2</i>	TRACKER	
CONTRAST		Tracker Length	<i>120.0</i>
Contrast Yes/No	<i>No</i>	Tracker Thickness	<i>20.0</i>

Cor SSFSE Nav

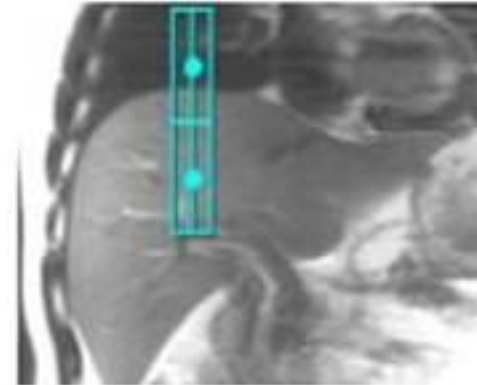
Cor SSFSE Nav

---

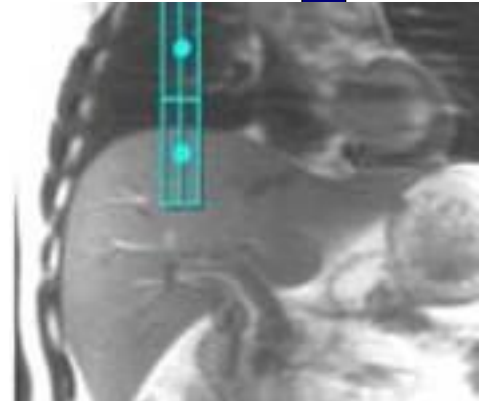
OTHERS

**Protocol Notes**

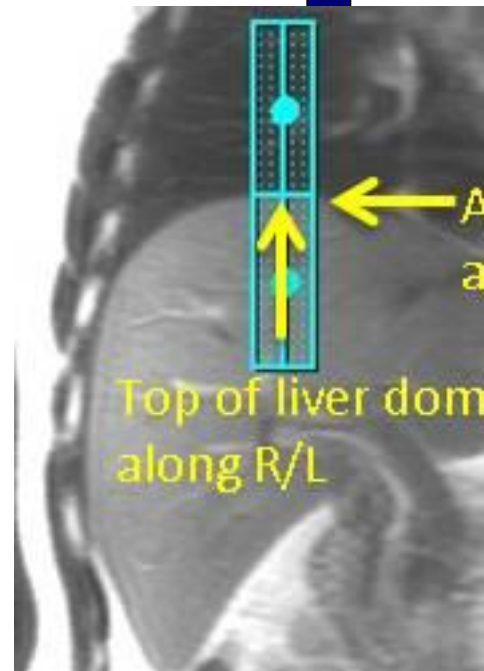
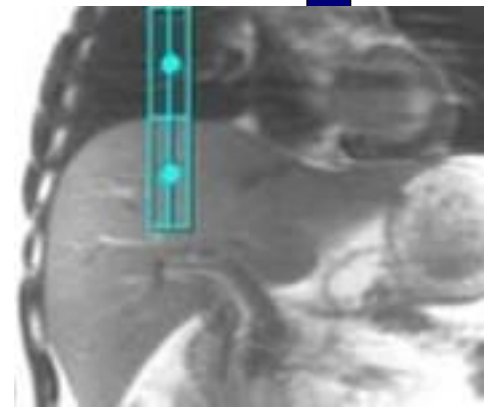
*Auto Tracker placement is turned on  
Tracker will be placed automatically  
Manual Placement  
Instructions:  
Navigator Tracker  
Placement Considerations  
\* Place navigator tracker on a breath hold localizer for the optimum performance\*  
- Center of tracker should be 1.5 cm below diaphragm if localizer was acquired with expiration breath hold  
- Center of tracker should be 1.5 cm above diaphragm if localizer was acquired with inspiration breath hold  
- Center of tracker should be placed on the diaphragm if localizer was acquired free breathing  
\*Please review operator manual for additional information  
Expiration-Breath Hold Tracker Placement*

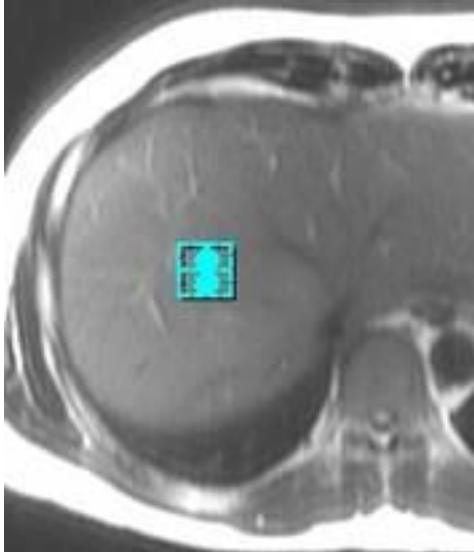
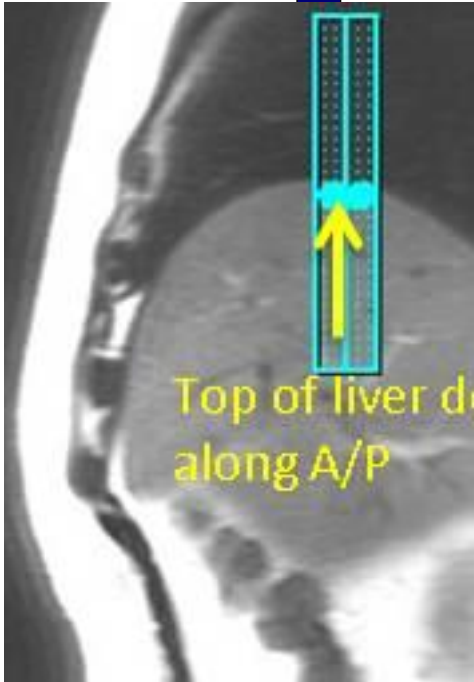


*Inspiration-Breath Hold Tracker Placement*



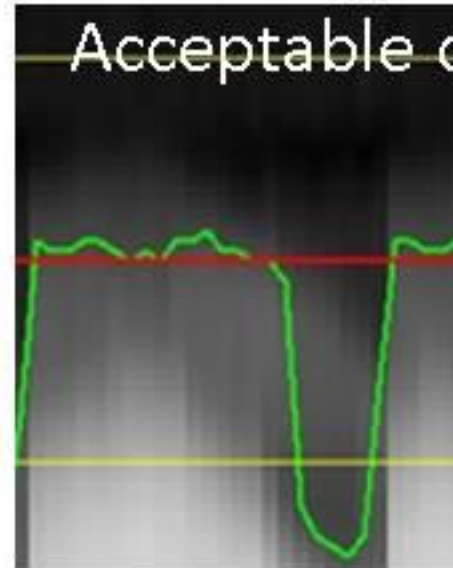
*Free Breathing Tracker Placement*







## Easy Tro



-> No need to check anything since good waveform reflects respiratory status

Protocol: adult\_abdomen\_MRCP WITHOUT

PATIENT POSITION		IMAGING PARAMETERS	
Patient Entry	<i>Feet First</i>	Imaging Mode	<i>2D</i>
Patient Position	<i>Supine</i>	Pulse Sequence	<i>Spin Echo</i>
Coil Configuration	<i>Body</i>	Imaging Options	<i>EDR, Fast, SS, Nav, ARC</i>
Plane	<i>AXIAL</i>	SCAN RANGE	
Series Description	<i>Ax SSFSE Nav</i>	FOV	<i>38.0</i>
SCAN TIMING		Slice Thickness	<i>7.0</i>
TE	<i>90.0</i>	Slice Spacing	<i>1.0</i>
Number of Echoes	<i>1</i>	ACQ TIMING	
Receiver Bandwidth	<i>83.33</i>	Freq	<i>320</i>
IMAGE ENHANCE		Phase	<i>256</i>
Filter Choice	<i>A</i>	Freq DIR	<i>R/L</i>
GATING/TRIGGER		NEX	<i>1.00</i>
Auto Trigger Type	<i>Off</i>	Phase FOV	<i>1.00</i>
Resp. Trigger Window	<i>30</i>	Auto Shim	<i>Auto</i>
FMRI		Phase Correction	<i>No</i>
PSD Trigger	<i>Internal</i>	USER CVS	
Slice Order	<i>Interleaved</i>	User CV1	<i>1.00</i>
View Order	<i>Bottom/Up</i>	User CV2	<i>240.00</i>
# of Repetitions REST	<i>0</i>	User CV13	<i>1.00</i>
# of Repetitions ACTIVE	<i>0</i>	MULTI-PHASE	
SAT		Seperate Series	<i>0</i>
Tag Type	<i>None</i>	Mask Phase	<i>0</i>
TRICKS		Mask Pause	<i>0</i>
Pause On/Off	<i>On</i>	DIFFUSION	
Auto Subtract	<i>0</i>	Recon All Images	<i>On</i>
Auto SCIC	<i>2</i>	TRACKER	
CONTRAST		Tracker Length	<i>120.0</i>
Contrast Yes/No	<i>No</i>	Tracker Thickness	<i>20.0</i>

Ax SSFSE Nav

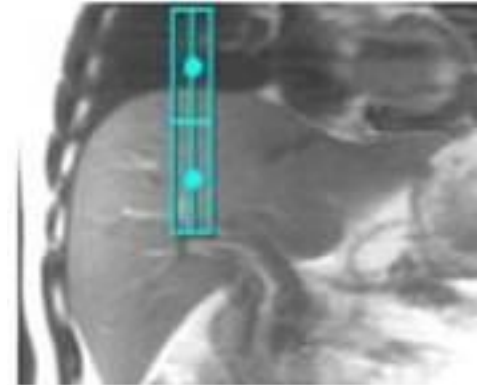
Ax SSFSE Nav

---

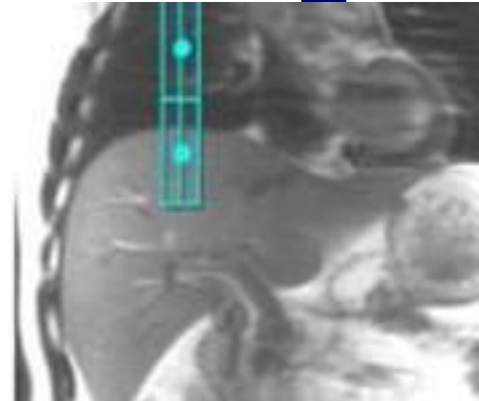
	<p>OTHERS</p>
--	---------------

**Protocol Notes**

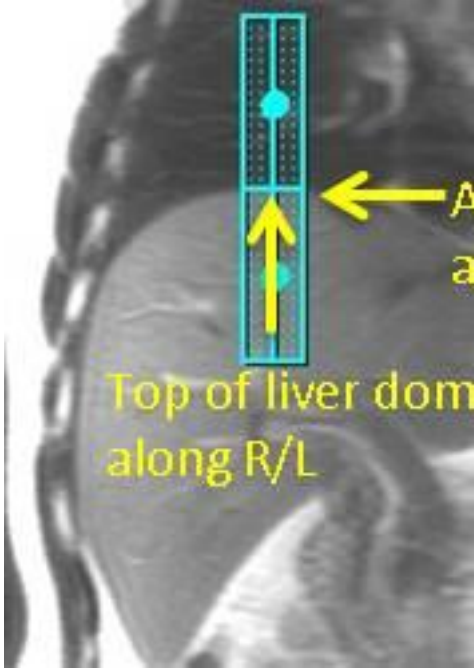
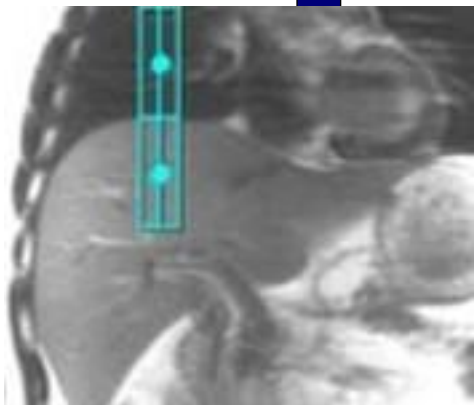
*Auto Tracker placement is turned on  
Tracker will be placed automatically  
Manual Placement  
Instructions:  
Navigator Tracker  
Placement Considerations  
\* Place navigator tracker on a breath hold localizer for the optimum performance\*  
- Center of tracker should be 1.5 cm below diaphragm if localizer was acquired with expiration breath hold  
- Center of tracker should be 1.5 cm above diaphragm if localizer was acquired with inspiration breath hold  
- Center of tracker should be placed on the diaphragm if localizer was acquired free breathing  
\*Please review operator manual for additional information  
Expiration-Breath Hold Tracker Placement*

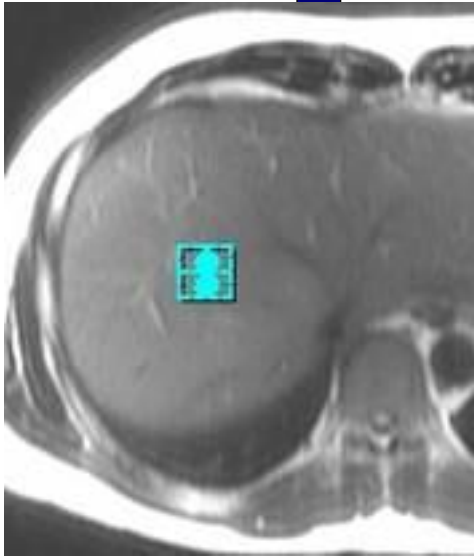
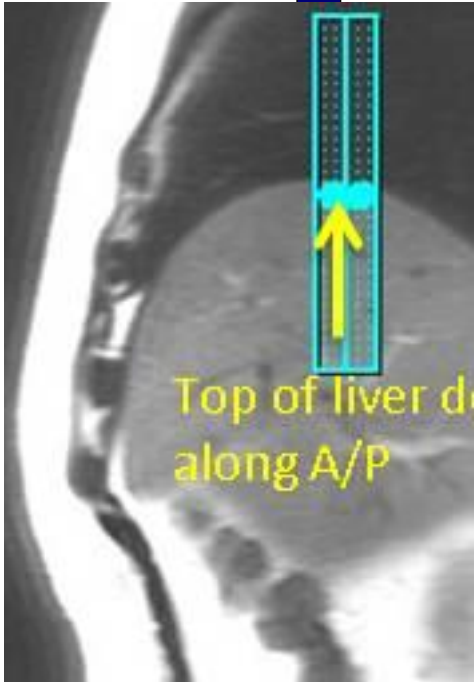


*Inspiration-Breath Hold Tracker Placement*

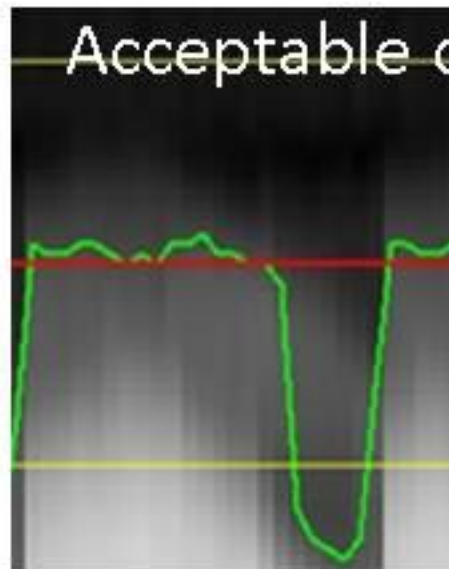


*Free Breathing Tracker Placement*





## Easy Tro



-> No need to ch  
anything since g  
waveform refle  
respiratory statu

Protocol: adult\_abdomen\_MRCP WITHOUT

PATIENT POSITION		IMAGING PARAMETERS	
Patient Entry	<i>Feet First</i>	Imaging Mode	<i>2D</i>
Patient Position	<i>Supine</i>	Pulse Sequence	<i>FSE-XL</i>
Coil Configuration	<i>Body</i>	Imaging Options	<i>FC, EDR, TRF, Fast, FR, Nav, ARC</i>
Plane	<i>AXIAL</i>		
Series Description	<i>Ax T2 frFSE Nav FS</i>	SCAN RANGE	
SCAN TIMING		FOV	<i>38.0</i>
Flip Angle	<i>111</i>	Slice Thickness	<i>7.0</i>
TE	<i>102.0</i>	Slice Spacing	<i>1.0</i>
Number of Echoes	<i>1</i>	ACQ TIMING	
Echo Train Length	<i>17</i>	Freq	<i>384</i>
Receiver Bandwidth	<i>62.50</i>	Phase	<i>256</i>
IMAGE ENHANCE		Freq DIR	<i>R/L</i>
Filter Choice	<i>A</i>	Fat Shift DIR	<i>Normal (L)</i>
GATING/TRIGGER		NEX	<i>2.00</i>
Auto Trigger Type	<i>Off</i>	Phase FOV	<i>1.00</i>
Resp. Trigger Window	<i>50</i>	Auto Shim	<i>Auto</i>
FMRI		Phase Correction	<i>No</i>
PSD Trigger	<i>Internal</i>	Flow Direction	<i>Slice</i>
View Order	<i>Bottom/Up</i>	Compensation	
# of Repetitions REST	<i>0</i>	USER CVS	
# of Repetitions ACTIVE	<i>0</i>	User CV19	<i>1.00</i>
		User CV22	<i>1.00</i>
SAT		MULTI-PHASE	
Tag Type	<i>None</i>	Seperate Series	<i>0</i>
Fat/Water Saturation	<i>Fat</i>	Mask Phase	<i>0</i>
		Mask Pause	<i>0</i>
TRICKS		DIFFUSION	
Pause On/Off	<i>On</i>	Recon All Images	<i>On</i>
Auto Subtract	<i>0</i>		
Auto SCIC	<i>2</i>	TRACKER	
CONTRAST		Tracker Length	<i>120.0</i>
Contrast Yes/No	<i>No</i>	Tracker Thickness	<i>20.0</i>

Ax T2 frFSE Nav FS

Ax T2 frFSE Nav FS

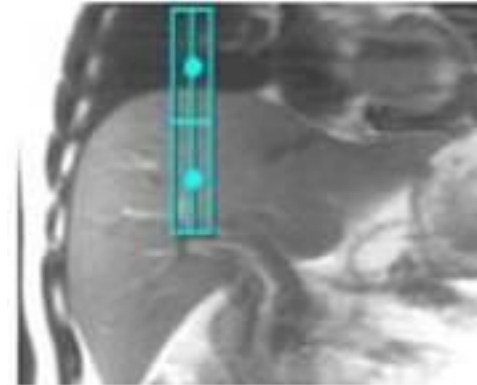


---

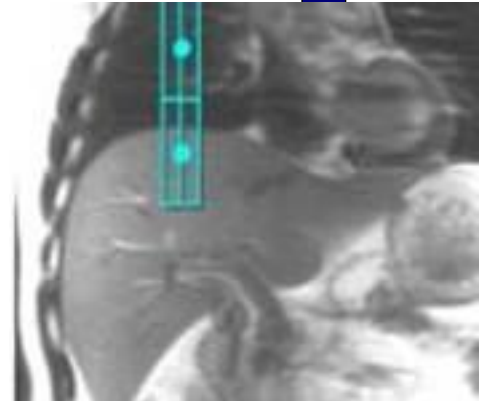
OTHERS

**Protocol Notes**

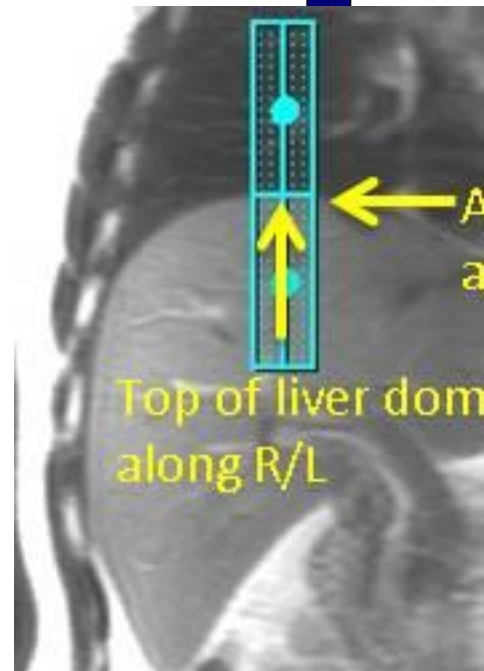
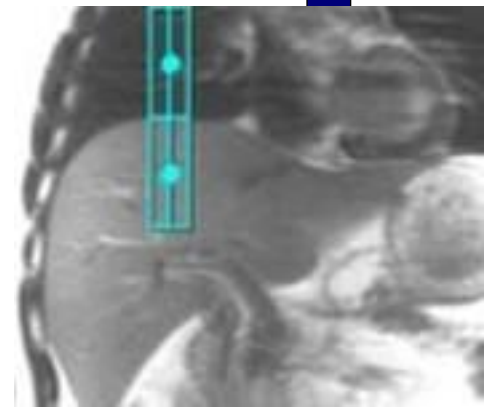
*Auto Tracker placement is turned on  
Tracker will be placed automatically  
Manual Placement  
Instructions:  
Navigator Tracker  
Placement Considerations  
\* Place navigator tracker on a breath hold localizer for the optimum performance\*  
- Center of tracker should be 1.5 cm below diaphragm if localizer was acquired with expiration breath hold  
- Center of tracker should be 1.5 cm above diaphragm if localizer was acquired with inspiration breath hold  
- Center of tracker should be placed on the diaphragm if localizer was acquired free breathing  
\*Please review operator manual for additional information  
Expiration-Breath Hold Tracker Placement*

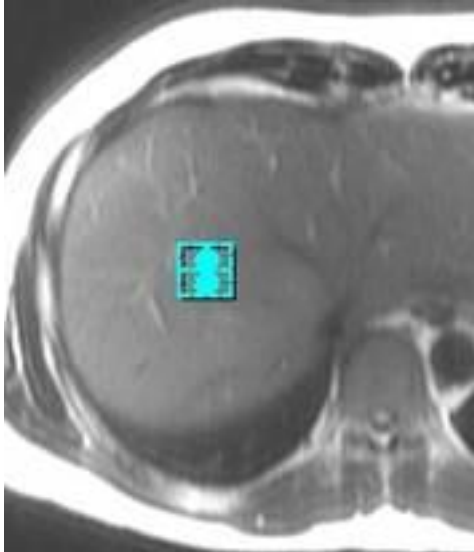
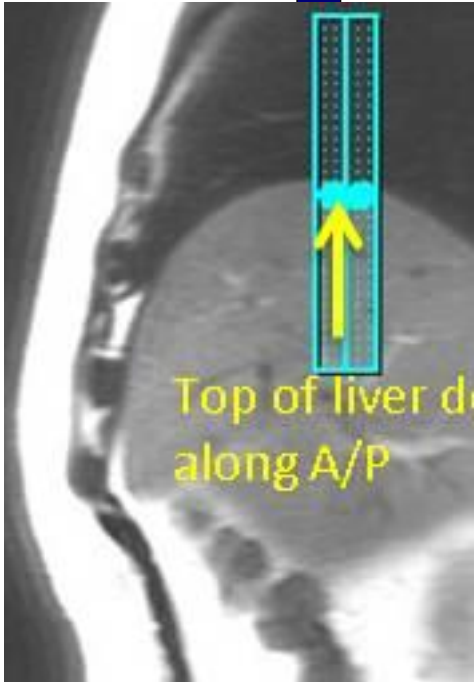


*Inspiration-Breath Hold Tracker Placement*

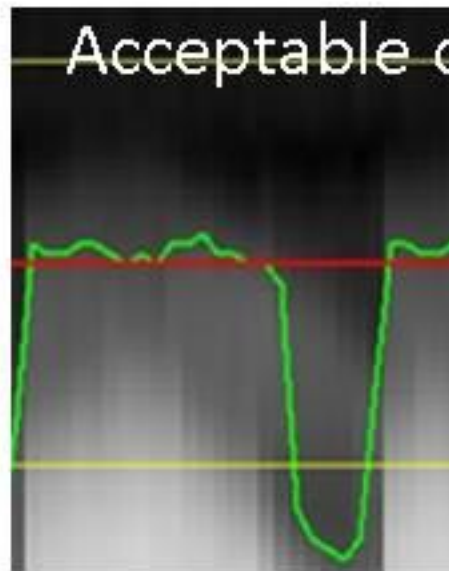


*Free Breathing Tracker Placement*





## Easy Tro



-> No need to check anything since good waveform reflects respiratory status

Protocol: adult\_abdomen\_MRCP WITHOUT

<b>PATIENT POSITION</b>		<b>IMAGING PARAMETERS</b>	
Patient Entry	<i>Feet First</i>	Imaging Mode	<i>2D</i>
Patient Position	<i>Supine</i>	Pulse Sequence	<i>Spin Echo</i>
Coil Configuration	<i>Body</i>	Imaging Options	<i>EDR, EPI, DIFF, Asset, Nav</i>
Plane	<i>AXIAL</i>	<b>SCAN RANGE</b>	
Series Description	<i>Ax DWI 3:1 B-800-500-50</i>	FOV	<i>40.0</i>
<b>SCAN TIMING</b>		Slice Thickness	<i>7.0</i>
TE	<i>Minimum</i>	Slice Spacing	<i>1.0</i>
Number of Echoes	<i>1</i>	<b>ACQ TIMING</b>	
Number of Shots	<i>1</i>	Freq	<i>80</i>
<b>IMAGE ENHANCE</b>		Phase	<i>128</i>
Filter Choice	<i>None</i>	Freq DIR	<i>R/L</i>
<b>GATING/TRIGGER</b>		Phase FOV	<i>1.00</i>
Auto Trigger Type	<i>Off</i>	Auto Shim	<i>Auto</i>
Resp. Trigger Window	<i>30</i>	Phase Correction	<i>Yes</i>
<b>FMRI</b>		<b>USER CVS</b>	
PSD Trigger	<i>Internal</i>	User CV0	<i>1.00</i>
View Order	<i>Bottom/Up</i>	User CV17	<i>1.00</i>
# of Repetitions REST	<i>0</i>	User CV18	<i>1.00</i>
# of Repetitions ACTIVE	<i>0</i>	<b>MULTI-PHASE</b>	
<b>SAT</b>		Seperate Series	<i>0</i>
Tag Type	<i>None</i>	Mask Phase	<i>0</i>
Fat/Water Saturation	<i>Fat</i>	Mask Pause	<i>0</i>
<b>TRICKS</b>		<b>DIFFUSION</b>	
Pause On/Off	<i>On</i>	Optimized TE	<i>Yes</i>
Auto Subtract	<i>0</i>	Diffusion Directions	<i>64</i>
Auto SCIC	<i>2</i>	Number of Diffusion Directions	<i>1</i>
<b>CONTRAST</b>		Number of T2 Images	<i>0</i>
Contrast Yes/No	<i>No</i>	Dual Spin Echo	<i>Off</i>
		Recon All Images	<i>On</i>
		<b>TRACKER</b>	
		Tracker Length	<i>120.0</i>
		Tracker Thickness	<i>20.0</i>

Ax DWI 3:1 B-800-500-50

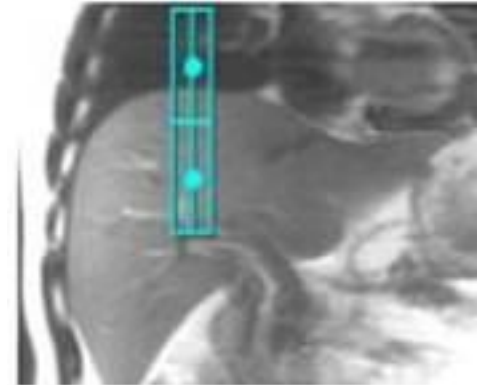
Ax DWI 3:1 B-800-500-50

---

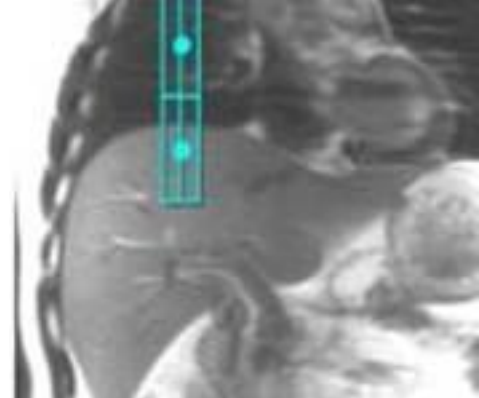
OTHERS

**Protocol Notes**

*Auto Tracker placement is turned on  
Tracker will be placed automatically  
Manual Placement  
Instructions:  
Navigator Tracker  
Placement Considerations  
\* Place navigator tracker on a breath hold localizer for the optimum performance\*  
- Center of tracker should be 1.5 cm below diaphragm if localizer was acquired with expiration breath hold  
- Center of tracker should be 1.5 cm above diaphragm if localizer was acquired with inspiration breath hold  
- Center of tracker should be placed on the diaphragm if localizer was acquired free breathing  
\*Please review operator manual for additional information  
Expiration-Breath Hold Tracker Placement*

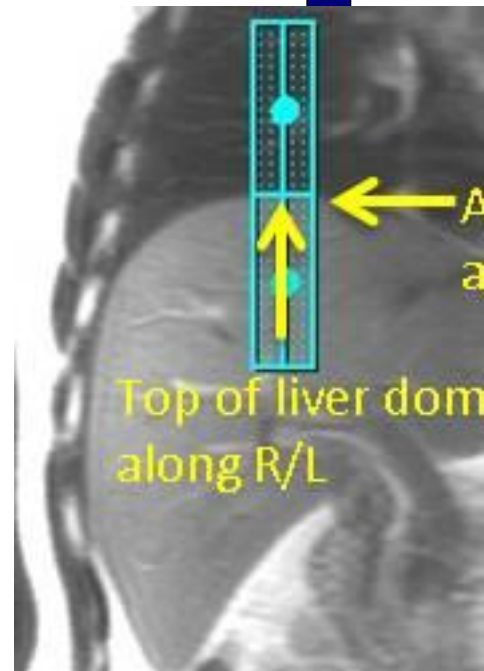
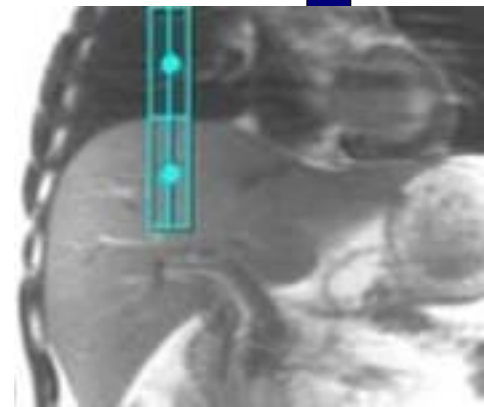


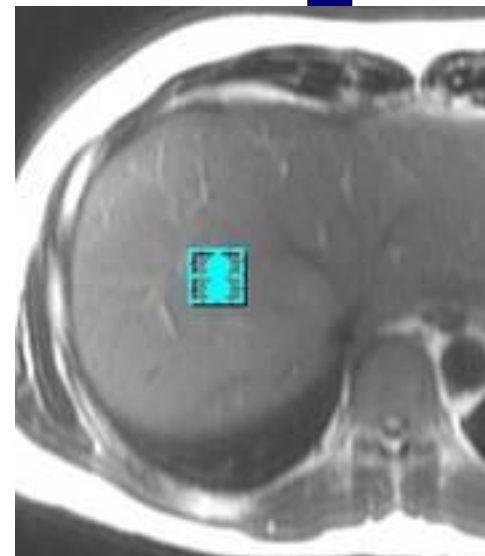
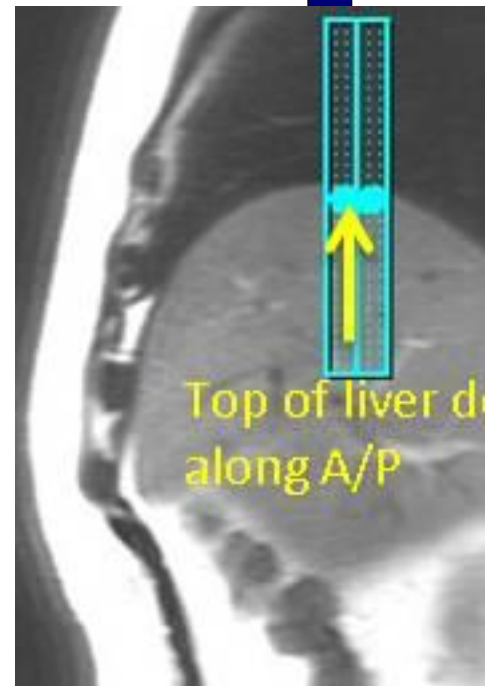
*Inspiration-Breath Hold Tracker Placement*



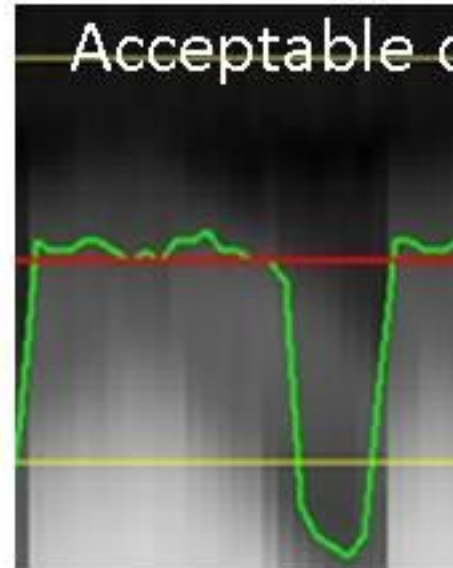
*Free Breathing Tracker Placement*







## Easy Tro



-> No need to ch  
anything since g  
waveform refle  
respiratory statu

Protocol: adult\_abdomen\_MRCP WITHOUT

<b>PATIENT POSITION</b>		<b>IMAGING PARAMETERS</b>	
Patient Entry	<i>Feet First</i>	Imaging Mode	<i>3D</i>
Patient Position	<i>Supine</i>	Pulse Sequence	<i>FRFSE-XL</i>
Coil Configuration	<i>Body</i>	Imaging Options	<i>EDR, Fast, ZIP2, T2P, Asset, FR, Nav, MRCP</i>
Plane	<i>OBLIQUE</i>	<b>SCAN RANGE</b>	
Series Description	<i>3D Obi MRCP Nav</i>	FOV	<i>34.0</i>
<b>SCAN TIMING</b>		Slice Thickness	<i>1.4</i>
TE	<i>900.0</i>	Location per Slab	<i>64</i>
Number of Echoes	<i>1</i>	Overlap Locations	<i>0</i>
Echo Train Length	<i>120</i>	<b>ACQ TIMING</b>	
Receiver Bandwidth	<i>41.67</i>	Freq	<i>288</i>
<b>IMAGE ENHANCE</b>		Phase	<i>288</i>
Filter Choice	<i>None</i>	Freq DIR	<i>Unswap</i>
<b>GATING/TRIGGER</b>		NEX	<i>1.00</i>
Auto Trigger Type	<i>Off</i>	Phase FOV	<i>1.00</i>
Resp. Trigger Window	<i>30</i>	Auto Shim	<i>Auto</i>
<b>MULTI-PHASE</b>		Phase Correction	<i>No</i>
Seperate Series	<i>0</i>	<b>FMRI</b>	
Mask Phase	<i>0</i>	PSD Trigger	<i>Internal</i>
Mask Pause	<i>0</i>	View Order	<i>Bottom/Up</i>
<b>DIFFUSION</b>		# of Repetitions REST	<i>0</i>
Recon All Images	<i>On</i>	# of Repetitions ACTIVE	<i>0</i>
<b>TRACKER</b>		<b>SAT</b>	
Tracker Length	<i>120.0</i>	Tag Type	<i>None</i>
Tracker Thickness	<i>20.0</i>	Fat/Water Saturation	<i>Fat</i>
		<b>TRICKS</b>	
		Pause On/Off	<i>On</i>
		Auto Subtract	<i>0</i>
		Auto SCIC	<i>Off</i>
		<b>CONTRAST</b>	
		Contrast Yes/No	<i>No</i>

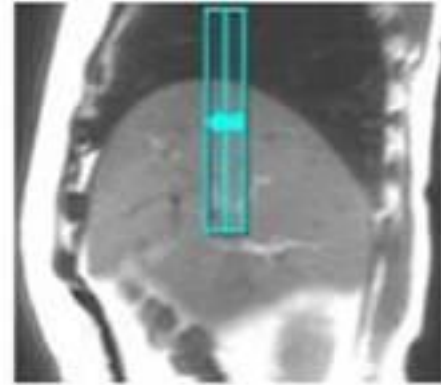
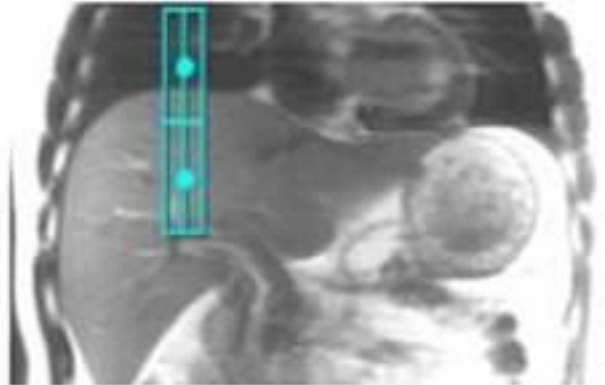
3D Obi MRCP Nav

3D Obi MRCP Nav

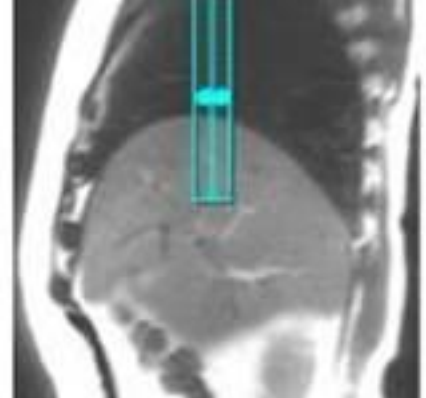
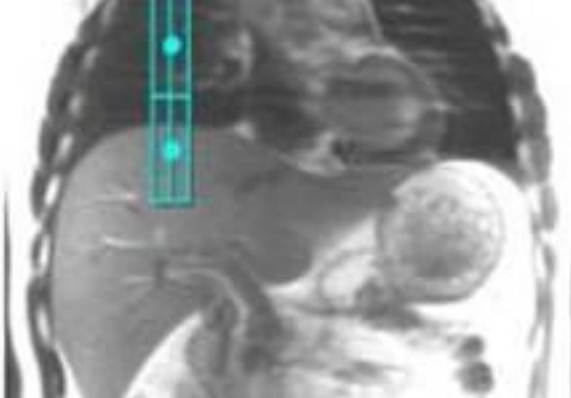
OTHERS

**Protocol Notes**

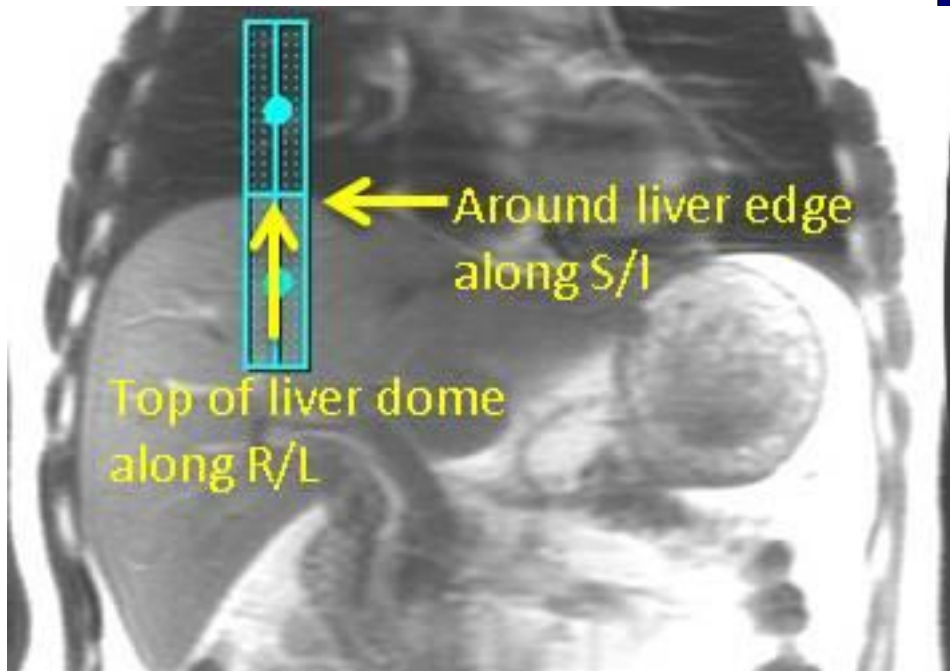
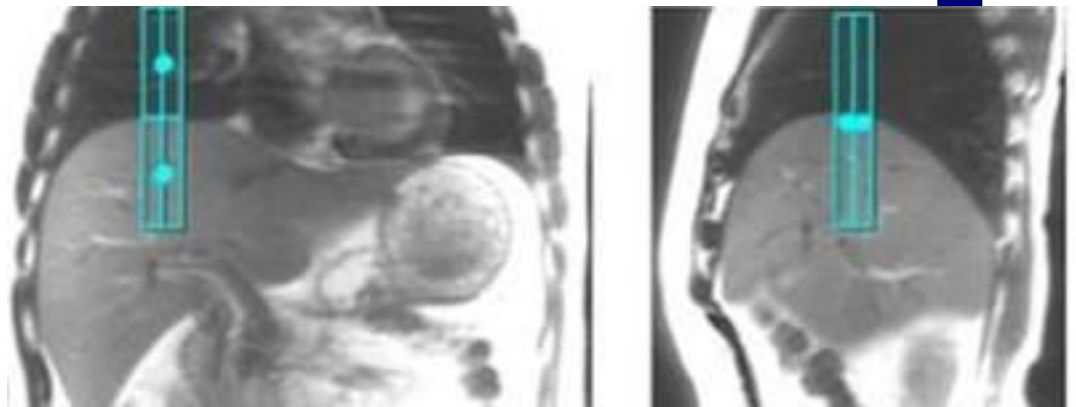
*Auto Tracker placement is turned on  
Tracker will be placed automatically  
Manual Placement  
Instructions:  
Navigator Tracker  
Placement Considerations  
\* Place navigator tracker on a breath hold localizer for the optimum performance\*  
- Center of tracker should be 1.5 cm below diaphragm if localizer was acquired with expiration breath hold  
- Center of tracker should be 1.5 cm above diaphragm if localizer was acquired with inspiration breath hold  
- Center of tracker should be placed on the diaphragm if localizer was acquired free breathing  
\*Please review operator manual for additional information  
Expiration-Breath Hold Tracker Placement*

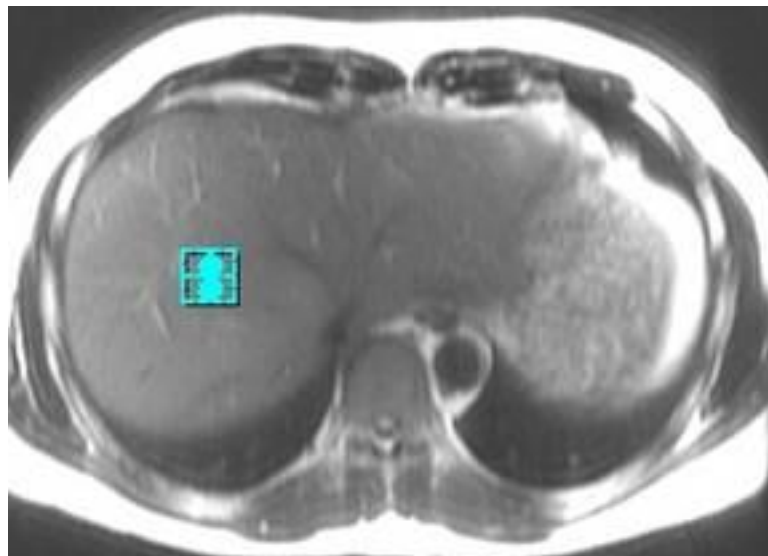
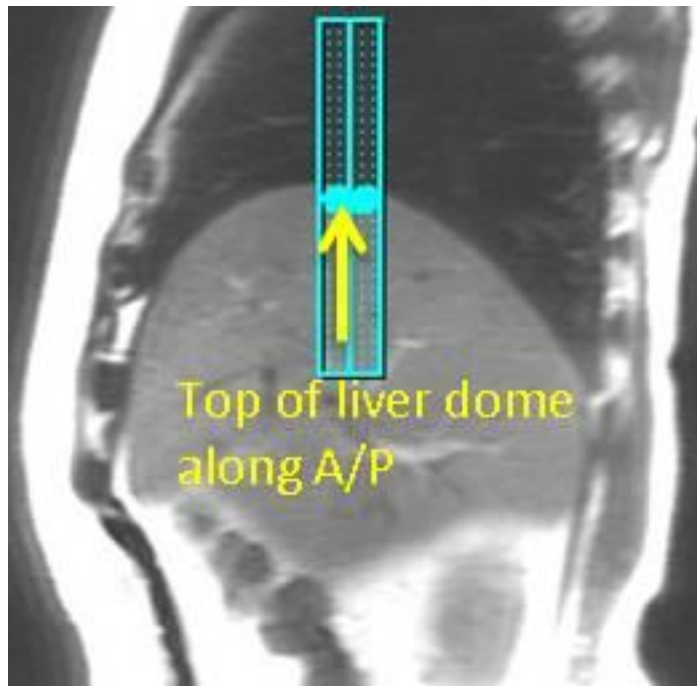


*Inspiration-Breath Hold Tracker Placement*



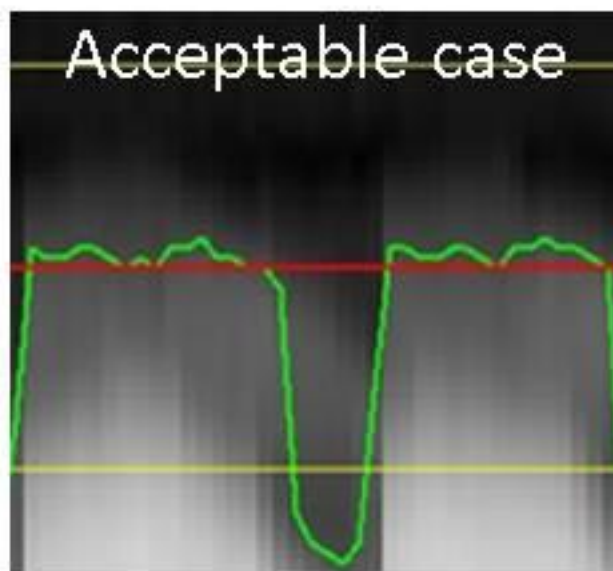
*Free Breathing Tracker Placement*



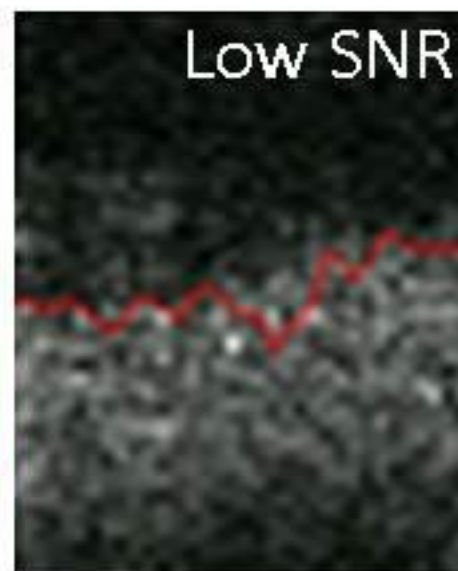




## Easy Troubleshooting fo



-> No need to change anything since green waveform reflects respiratory status



-> Increase Track Thickness

Protocol: adult\_abdomen\_MRCP WITHOUT

Radial SSFSE Thick ASPIR Thick BH	<b>PATIENT POSITION</b>		<b>IMAGING PARAMETERS</b>	
	Patient Entry	<i>Feet First</i>	Imaging Mode	<i>2D</i>
	Patient Position	<i>Supine</i>	Pulse Sequence	<i>Spin Echo</i>
	Coil Configuration	<i>Body</i>	Imaging Options	<i>Fast, SS, Asset</i>
	Plane	<i>OBLIQUE</i>	<b>SCAN RANGE</b>	
	Series Description	<i>Radial SSFSE Thick ASPIR Thick BH</i>	FOV	<i>38.0</i>
	<b>SCAN TIMING</b>		Slice Thickness	<i>40.0</i>
	TE	<i>900.0</i>	Slice Spacing	<i>0.0</i>
	Number of Echoes	<i>1</i>	<b>ACQ TIMING</b>	
	TR	<i>Minimum</i>	Freq	<i>320</i>
	TI	<i>170</i>	Phase	<i>256</i>
	Receiver Bandwidth	<i>31.25</i>	Freq DIR	<i>Unswap</i>
	<b>IMAGE ENHANCE</b>		NEX	<i>1.00</i>
	Filter Choice	<i>None</i>	# of Acq. Before Pause	<i>1</i>
	<b>GATING/TRIGGER</b>		Phase FOV	<i>1.00</i>
	Auto Trigger Type	<i>Off</i>	Auto Shim	<i>Auto</i>
	<b>FMRI</b>		Phase Correction	<i>No</i>
	PSD Trigger	<i>Internal</i>	<b>USER CVS</b>	
	Slice Order	<i>Interleaved</i>	User CV1	<i>1.00</i>
	View Order	<i>Bottom/Up</i>	User CV2	<i>264.00</i>
# of Repetitions REST	<i>0</i>	User CV13	<i>1.00</i>	
# of Repetitions ACTIVE	<i>0</i>	<b>MULTI-PHASE</b>		
<b>SAT</b>		Seperate Series	<i>0</i>	
Tag Type	<i>None</i>	Mask Phase	<i>0</i>	
Fat/Water Saturation	<i>Fat Special</i>	Mask Pause	<i>0</i>	
<b>TRICKS</b>		<b>DIFFUSION</b>		
Pause On/Off	<i>On</i>	Recon All Images	<i>On</i>	
Auto Subtract	<i>0</i>	<b>CONTRAST</b>		
Auto SCIC	<i>Off</i>	Contrast Yes/No	<i>No</i>	

Radial SSFSE Thick ASPIR Thick BH

Protocol: adult\_abdomen\_MRCP WITHOUT

Radial SSFSE Thick ASPIR Thick BH	<b>PATIENT POSITION</b>		<b>IMAGING PARAMETERS</b>	
	Patient Entry	<i>Feet First</i>	Imaging Mode	<i>2D</i>
	Patient Position	<i>Supine</i>	Pulse Sequence	<i>Spin Echo</i>
	Coil Configuration	<i>Body</i>	Imaging Options	<i>Fast, SS, Asset</i>
	Plane	<i>OBLIQUE</i>	<b>SCAN RANGE</b>	
	Series Description	<i>Radial SSFSE Thick ASPIR Thick BH</i>	FOV	<i>38.0</i>
	<b>SCAN TIMING</b>		Slice Thickness	<i>40.0</i>
	TE	<i>900.0</i>	Slice Spacing	<i>0.0</i>
	Number of Echoes	<i>1</i>	<b>ACQ TIMING</b>	
	TR	<i>Minimum</i>	Freq	<i>320</i>
	TI	<i>170</i>	Phase	<i>256</i>
	Receiver Bandwidth	<i>31.25</i>	Freq DIR	<i>Unswap</i>
	<b>IMAGE ENHANCE</b>		NEX	<i>1.00</i>
	Filter Choice	<i>None</i>	# of Acq. Before Pause	<i>1</i>
	<b>GATING/TRIGGER</b>		Phase FOV	<i>1.00</i>
	Auto Trigger Type	<i>Off</i>	Auto Shim	<i>Auto</i>
	<b>FMRI</b>		Phase Correction	<i>No</i>
	PSD Trigger	<i>Internal</i>	<b>USER CVS</b>	
	Slice Order	<i>Interleaved</i>	User CV1	<i>1.00</i>
	View Order	<i>Bottom/Up</i>	User CV2	<i>264.00</i>
# of Repetitions REST	<i>0</i>	User CV13	<i>1.00</i>	
# of Repetitions ACTIVE	<i>0</i>	<b>MULTI-PHASE</b>		
<b>SAT</b>		Seperate Series	<i>0</i>	
Tag Type	<i>None</i>	Mask Phase	<i>0</i>	
Fat/Water Saturation	<i>Fat Special</i>	Mask Pause	<i>0</i>	
<b>TRICKS</b>		<b>DIFFUSION</b>		
Pause On/Off	<i>On</i>	Recon All Images	<i>On</i>	
Auto Subtract	<i>0</i>	<b>CONTRAST</b>		
Auto SCIC	<i>Off</i>	Contrast Yes/No	<i>No</i>	

Radial SSFSE Thick ASPIR Thick BH

Protocol: adult\_abdomen\_MRCP WITHOUT

Radial SSFSE Thick ASPIR Thick BH	<b>PATIENT POSITION</b>		<b>IMAGING PARAMETERS</b>	
	Patient Entry	<i>Feet First</i>	Imaging Mode	<i>2D</i>
	Patient Position	<i>Supine</i>	Pulse Sequence	<i>Spin Echo</i>
	Coil Configuration	<i>Body</i>	Imaging Options	<i>Fast, SS, Asset</i>
	Plane	<i>OBLIQUE</i>	<b>SCAN RANGE</b>	
	Series Description	<i>Radial SSFSE Thick ASPIR Thick BH</i>	FOV	<i>38.0</i>
	<b>SCAN TIMING</b>		Slice Thickness	<i>40.0</i>
	TE	<i>900.0</i>	Slice Spacing	<i>0.0</i>
	Number of Echoes	<i>1</i>	<b>ACQ TIMING</b>	
	TR	<i>Minimum</i>	Freq	<i>320</i>
	TI	<i>170</i>	Phase	<i>256</i>
	Receiver Bandwidth	<i>31.25</i>	Freq DIR	<i>Unswap</i>
	<b>IMAGE ENHANCE</b>		NEX	<i>1.00</i>
	Filter Choice	<i>None</i>	# of Acq. Before Pause	<i>1</i>
	<b>GATING/TRIGGER</b>		Phase FOV	<i>1.00</i>
	Auto Trigger Type	<i>Off</i>	Auto Shim	<i>Auto</i>
	<b>FMRI</b>		Phase Correction	<i>No</i>
	PSD Trigger	<i>Internal</i>	<b>USER CVS</b>	
	Slice Order	<i>Interleaved</i>	User CV1	<i>1.00</i>
	View Order	<i>Bottom/Up</i>	User CV2	<i>264.00</i>
# of Repetitions REST	<i>0</i>	User CV13	<i>1.00</i>	
# of Repetitions ACTIVE	<i>0</i>	<b>MULTI-PHASE</b>		
<b>SAT</b>		Seperate Series	<i>0</i>	
Tag Type	<i>None</i>	Mask Phase	<i>0</i>	
Fat/Water Saturation	<i>Fat Special</i>	Mask Pause	<i>0</i>	
<b>TRICKS</b>		<b>DIFFUSION</b>		
Pause On/Off	<i>On</i>	Recon All Images	<i>On</i>	
Auto Subtract	<i>0</i>	<b>CONTRAST</b>		
Auto SCIC	<i>Off</i>	Contrast Yes/No	<i>No</i>	

Radial SSFSE Thick ASPIR Thick BH

Protocol: adult\_abdomen\_MRCP WITHOUT

3D Ax LAVA Flex	<b>PATIENT POSITION</b>		<b>IMAGING PARAMETERS</b>		3D Ax LAVA Flex
	Patient Entry	<i>Feet First</i>	Imaging Mode	<i>3D</i>	
	Patient Position	<i>Supine</i>	Pulse Sequence	<i>LAVA</i>	
	Coil Configuration	<i>Body</i>	Imaging Options	<i>EDR, Fast, ZIP2, ARC, Flex</i>	
	Plane	<i>AXIAL</i>	IDEAL	<i>15</i>	
	Series Description	<i>3D Ax LAVA Flex</i>	<b>SCAN RANGE</b>		
	<b>SCAN TIMING</b>		FOV	<i>42.0</i>	
	Flip Angle	<i>12</i>	Slice Thickness	<i>4.4</i>	
	TE	<i>Minimum</i>	Location per Slab	<i>56</i>	
	Number of Echoes	<i>2</i>	Overlap Locations	<i>0</i>	
	Receiver Bandwidth	<i>142.86</i>	<b>ACQ TIMING</b>		
	<b>IMAGE ENHANCE</b>		Freq	<i>300</i>	
	Filter Choice	<i>A</i>	Phase	<i>200</i>	
	<b>GATING/TRIGGER</b>		Freq DIR	<i>R/L</i>	
	Auto Trigger Type	<i>Off</i>	NEX	<i>1.00</i>	
	<b>FMRI</b>		Phase FOV	<i>1.10</i>	
	PSD Trigger	<i>Internal</i>	Auto Shim	<i>Auto</i>	
	View Order	<i>Bottom/Up</i>	Phase Correction	<i>No</i>	
	# of Repetitions REST	<i>0</i>	<b>USER CVS</b>		
	# of Repetitions ACTIVE	<i>0</i>	User CV4	<i>6.60</i>	
	<b>SAT</b>		User CV6	<i>1.00</i>	
	Tag Type	<i>None</i>	<b>MULTI-PHASE</b>		
	<b>TRICKS</b>		Seperate Series	<i>0</i>	
	Pause On/Off	<i>On</i>	Trigger Delay without AV	<i>6.6</i>	
	Auto Subtract	<i>0</i>	Mask Phase	<i>0</i>	
Auto SCIC	<i>2</i>	Mask Pause	<i>0</i>		
		<b>DIFFUSION</b>			
		Recon All Images	<i>On</i>		
		<b>CONTRAST</b>			
		Contrast Yes/No	<i>No</i>		