

McLeod Pavilion

Protocol: adult\_abdomen\_MRCP With and Without

PATIENT POSITION		IMAGING PARAMETERS	
Patient Entry	<i>Feet First</i>	Imaging Mode	<i>2D</i>
Patient Position	<i>Supine</i>	Pulse Sequence	<i>Spin Echo</i>
Coil Configuration	<i>Body</i>	Imaging Options	<i>Seq, EDR, TRF, Fast, SS, FR, ARC</i>
Plane	<i>3-PLANE</i>	<b>SCAN RANGE</b>	
Series Description	<i>3-Plane Localizer</i>	FOV	<i>48.0</i>
<b>SCAN TIMING</b>		Slice Thickness	<i>8.0</i>
TE	<i>80.0</i>	Slice Spacing	<i>5.0</i>
Number of Echoes	<i>1</i>	<b>ACQ TIMING</b>	
TR	<i>525.0</i>	Freq	<i>384</i>
Receiver Bandwidth	<i>83.33</i>	Phase	<i>160</i>
<b>IMAGE ENHANCE</b>		Freq DIR	<i>Unswap</i>
Filter Choice	<i>None</i>	# of Acq. Before Pause	<i>0</i>
<b>GATING/TRIGGER</b>		Phase FOV	<i>1.00</i>
Auto Trigger Type	<i>Off</i>	Auto Shim	<i>Auto</i>
<b>FMRI</b>		Phase Correction	<i>No</i>
PSD Trigger	<i>Internal</i>	<b>USER CVS</b>	
View Order	<i>Bottom/Up</i>	User CV1	<i>1.00</i>
# of Repetitions REST	<i>0</i>	<b>MULTI-PHASE</b>	
# of Repetitions ACTIVE	<i>0</i>	Seperate Series	<i>0</i>
<b>SAT</b>		Mask Phase	<i>0</i>
Tag Type	<i>None</i>	Mask Pause	<i>0</i>
<b>TRICKS</b>		<b>DIFFUSION</b>	
Pause On/Off	<i>On</i>	Recon All Images	<i>On</i>
Auto Subtract	<i>0</i>	<b>CONTRAST</b>	
Auto SCIC	<i>Off</i>	Contrast Yes/No	<i>No</i>

3-Plane Localizer

3-Plane Localizer

Protocol: adult\_abdomen\_MRCP With and Without

PATIENT POSITION		IMAGING PARAMETERS	
Patient Entry	Feet First	Imaging Mode	2D
Patient Position	Supine	Pulse Sequence	Spin Echo
Coil Configuration	Body	Imaging Options	Seq, EDR, Fast, SS, FR, ARC
Plane	3-PLANE		
Series Description	3-Plane Localizer BH		
SCAN TIMING		SCAN RANGE	
TE	70.0	FOV	48.0
Number of Echoes	1	Slice Thickness	15.0
TR	Minimum	Slice Spacing	7.0
Receiver Bandwidth	83.33		
IMAGE ENHANCE		ACQ TIMING	
Filter Choice	None	Freq	256
		Phase	160
GATING/TRIGGER		Freq DIR	Unswap
Auto Trigger Type	Off	# of Acq. Before Pause	0
		Phase FOV	1.00
FMRI		Auto Shim	Auto
PSD Trigger	Internal	Phase Correction	No
View Order	Bottom/Up		
# of Repetitions REST	0	USER CVS	
# of Repetitions ACTIVE	0	User CV2	240.00
		User CV13	1.00
SAT		MULTI-PHASE	
Tag Type	None	Seperate Series	0
		Mask Phase	0
TRICKS		Mask Pause	0
Pause On/Off	On	DIFFUSION	
Auto Subtract	0	Recon All Images	On
Auto SCIC	Off	CONTRAST	
OTHERS		Contrast Yes/No	No
Protocol Notes	Navigator Tracker Placement Considerations * Use breath hold 3 plane localizer for navigator tracker placement for optimal results*		

3-Plane Localizer BH

3-Plane Localizer BH

Protocol: adult\_abdomen\_MRCP With and Without

Ax FIESTA ASPIR BH	<b>PATIENT POSITION</b>		<b>IMAGING PARAMETERS</b>		Ax FIESTA ASPIR BH
	Patient Entry	<i>Feet First</i>	Imaging Mode	<i>2D</i>	
	Patient Position	<i>Supine</i>	Pulse Sequence	<i>Fiesta</i>	
	Coil Configuration	<i>Body</i>	Imaging Options	<i>Seq, EDR, Fast, ARC</i>	
	Plane	<i>AXIAL</i>	<b>SCAN RANGE</b>		
	Series Description	<i>Ax FIESTA ASPIR BH</i>	FOV	<i>40.0</i>	
	<b>SCAN TIMING</b>		Slice Thickness	<i>7.0</i>	
	Flip Angle	<i>50</i>	Slice Spacing	<i>1.0</i>	
	TE	<i>Minimum</i>	<b>ACQ TIMING</b>		
	Number of Echoes	<i>1</i>	Freq	<i>192</i>	
	TI	<i>210</i>	Phase	<i>300</i>	
	Receiver Bandwidth	<i>125.00</i>	Freq DIR	<i>R/L</i>	
	<b>IMAGE ENHANCE</b>		NEX	<i>1.00</i>	
	Filter Choice	<i>None</i>	# of Acq. Before Pause	<i>0</i>	
	<b>GATING/TRIGGER</b>		Phase FOV	<i>0.80</i>	
	Auto Trigger Type	<i>Off</i>	Auto Shim	<i>Auto</i>	
	<b>MULTI-PHASE</b>		Phase Correction	<i>No</i>	
	Seperate Series	<i>0</i>	<b>FMRI</b>		
	Mask Phase	<i>0</i>	PSD Trigger	<i>Internal</i>	
	Mask Pause	<i>0</i>	Slice Order	<i>Interleaved</i>	
<b>DIFFUSION</b>		View Order	<i>Bottom/Up</i>		
Recon All Images	<i>On</i>	# of Repetitions REST	<i>0</i>		
<b>CONTRAST</b>		# of Repetitions ACTIVE	<i>0</i>		
Contrast Yes/No	<i>No</i>	<b>SAT</b>			
		Tag Type	<i>None</i>		
		Fat/Water Saturation	<i>Fat Special</i>		
		<b>TRICKS</b>			
		Pause On/Off	<i>On</i>		
		Auto Subtract	<i>0</i>		
		Auto SCIC	<i>Off</i>		
		<b>OTHERS</b>			
		Protocol Notes	<i>Tip: - Place a shim volume over the liver to help reduce artifacts. - TI time for ASPIR (ChemSAT) can be modified by changing the Prep Time.</i>		

Protocol: adult\_abdomen\_MRCP With and Without

PATIENT POSITION	
Patient Entry	Feet First
Patient Position	Supine
Coil Configuration	Body
Plane	CORONAL
Series Description	Cor SSFSE Nav

SCAN TIMING	
TE	90.0
Number of Echoes	1
Receiver Bandwidth	83.33

IMAGE ENHANCE	
Filter Choice	A

GATING/TRIGGER	
Auto Trigger Type	Off
Resp. Trigger Window	30

FMRI	
PSD Trigger	Internal
Slice Order	Interleaved
View Order	Bottom/Up
# of Repetitions REST	0
# of Repetitions ACTIVE	0

SAT	
Tag Type	None

TRICKS	
Pause On/Off	On
Auto Subtract	0
Auto SCIC	2

CONTRAST	
Contrast Yes/No	No

IMAGING PARAMETERS	
Imaging Mode	2D
Pulse Sequence	Spin Echo
Imaging Options	EDR, Fast, SS, Nav, ARC

SCAN RANGE	
FOV	40.0
Slice Thickness	7.0
Slice Spacing	1.0

ACQ TIMING	
Freq	320
Phase	256
Freq DIR	S/I
NEX	1.00
Phase FOV	1.00
Auto Shim	Auto
Phase Correction	No

USER CVS	
User CV1	1.00
User CV2	240.00
User CV13	1.00

MULTI-PHASE	
Seperate Series	0
Mask Phase	0
Mask Pause	0

DIFFUSION	
Recon All Images	On

TRACKER	
Tracker Length	120.0
Tracker Thickness	20.0

Cor SSFSE Nav

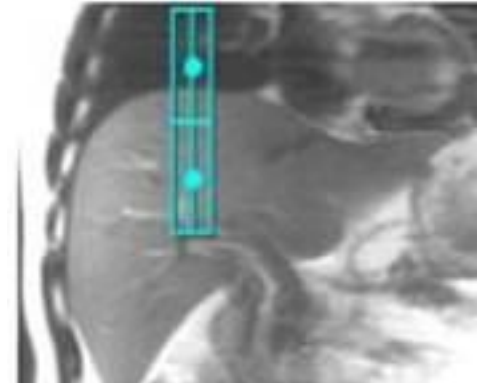
Cor SSFSE Nav

---

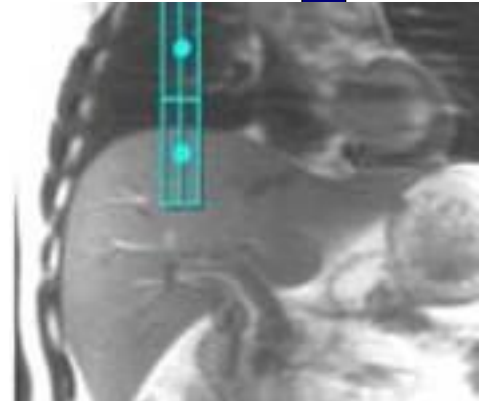
OTHERS

**Protocol Notes**

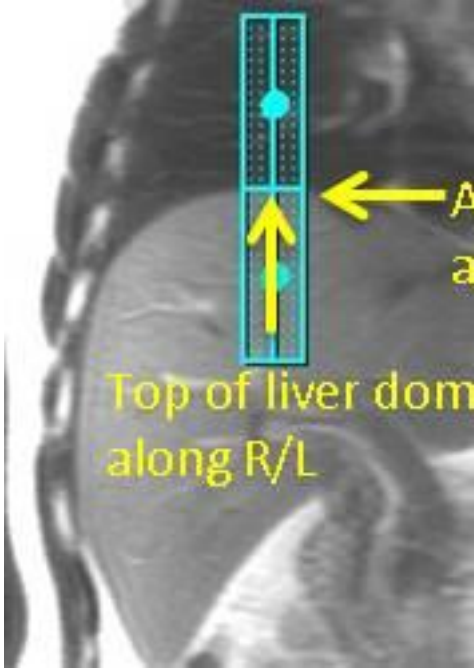
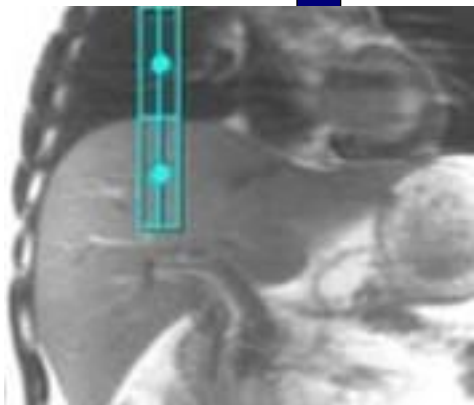
*Auto Tracker placement is turned on  
Tracker will be placed automatically  
Manual Placement  
Instructions:  
Navigator Tracker  
Placement Considerations  
\* Place navigator tracker on a breath hold localizer for the optimum performance\*  
- Center of tracker should be 1.5 cm below diaphragm if localizer was acquired with expiration breath hold  
- Center of tracker should be 1.5 cm above diaphragm if localizer was acquired with inspiration breath hold  
- Center of tracker should be placed on the diaphragm if localizer was acquired free breathing  
\*Please review operator manual for additional information  
Expiration-Breath Hold Tracker Placement*

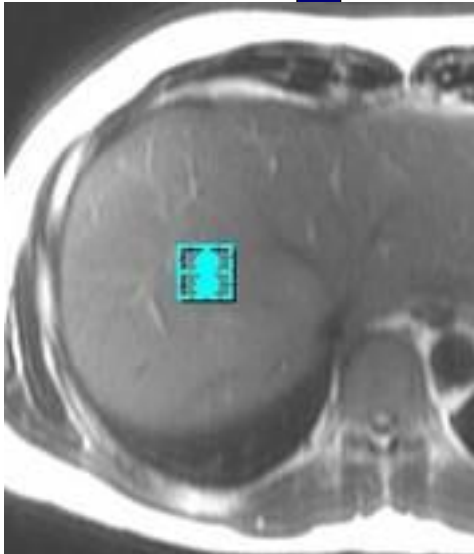
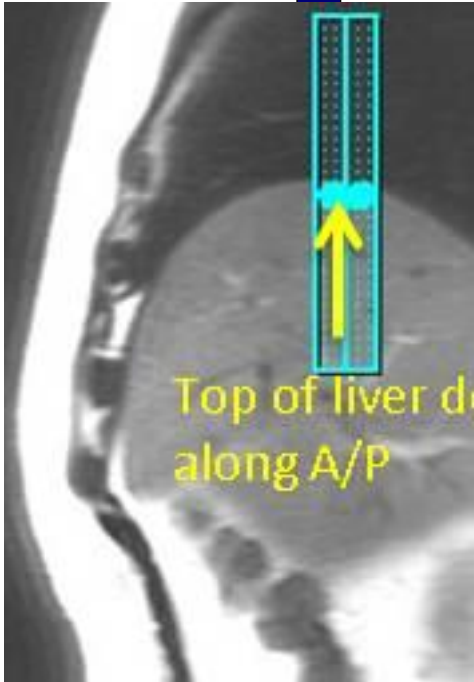


*Inspiration-Breath Hold Tracker Placement*



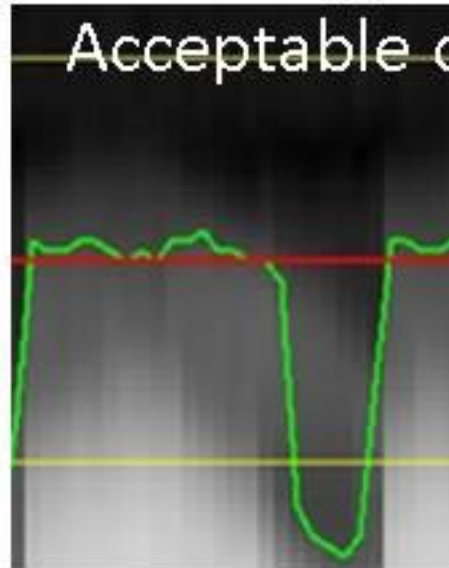
*Free Breathing Tracker Placement*







## Easy Tro



-> No need to ch  
anything since g  
waveform refle  
respiratory statu

Protocol: adult\_abdomen\_MRCP With and Without

<b>PATIENT POSITION</b>		<b>IMAGING PARAMETERS</b>	
Patient Entry	<i>Feet First</i>	Imaging Mode	<i>2D</i>
Patient Position	<i>Supine</i>	Pulse Sequence	<i>Spin Echo</i>
Coil Configuration	<i>Body</i>	Imaging Options	<i>EDR, Fast, SS, Nav, ARC</i>
Plane	<i>AXIAL</i>	<b>SCAN RANGE</b>	
Series Description	<i>Ax SSFSE Nav</i>	FOV	<i>38.0</i>
<b>SCAN TIMING</b>		Slice Thickness	<i>7.0</i>
TE	<i>90.0</i>	Slice Spacing	<i>1.0</i>
Number of Echoes	<i>1</i>	<b>ACQ TIMING</b>	
Receiver Bandwidth	<i>83.33</i>	Freq	<i>320</i>
<b>IMAGE ENHANCE</b>		Phase	<i>256</i>
Filter Choice	<i>A</i>	Freq DIR	<i>R/L</i>
<b>GATING/TRIGGER</b>		NEX	<i>1.00</i>
Auto Trigger Type	<i>Off</i>	Phase FOV	<i>1.00</i>
Resp. Trigger Window	<i>30</i>	Auto Shim	<i>Auto</i>
<b>FMRI</b>		Phase Correction	<i>No</i>
PSD Trigger	<i>Internal</i>	<b>USER CVS</b>	
Slice Order	<i>Interleaved</i>	User CV1	<i>1.00</i>
View Order	<i>Bottom/Up</i>	User CV2	<i>240.00</i>
# of Repetitions REST	<i>0</i>	User CV13	<i>1.00</i>
# of Repetitions ACTIVE	<i>0</i>	<b>MULTI-PHASE</b>	
<b>SAT</b>		Seperate Series	<i>0</i>
Tag Type	<i>None</i>	Mask Phase	<i>0</i>
<b>TRICKS</b>		Mask Pause	<i>0</i>
Pause On/Off	<i>On</i>	<b>DIFFUSION</b>	
Auto Subtract	<i>0</i>	Recon All Images	<i>On</i>
Auto SCIC	<i>2</i>	<b>TRACKER</b>	
<b>CONTRAST</b>		Tracker Length	<i>120.0</i>
Contrast Yes/No	<i>No</i>	Tracker Thickness	<i>20.0</i>

Ax SSFSE Nav

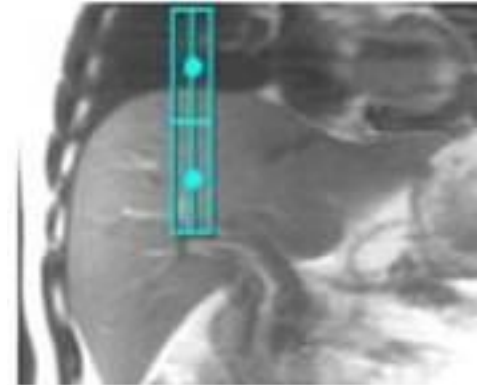
Ax SSFSE Nav

---

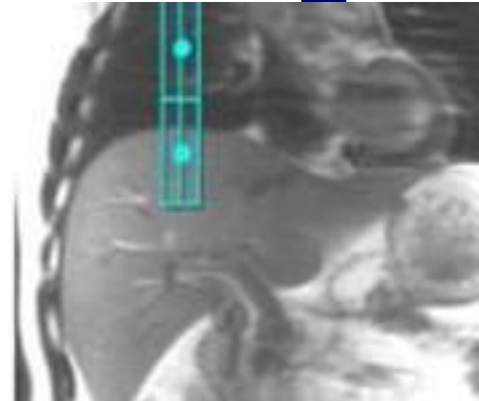
OTHERS

**Protocol Notes**

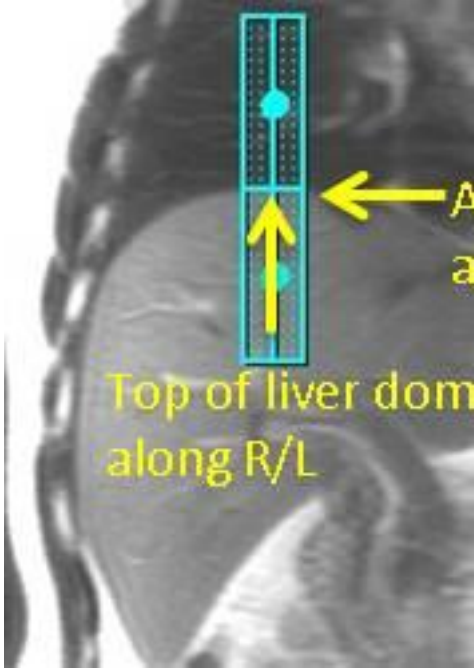
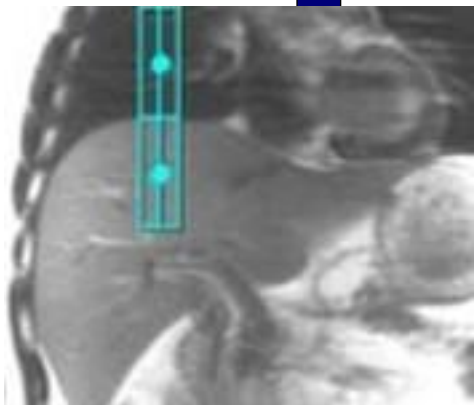
*Auto Tracker placement is turned on  
Tracker will be placed automatically  
Manual Placement  
Instructions:  
Navigator Tracker  
Placement Considerations  
\* Place navigator tracker on a breath hold localizer for the optimum performance\*  
- Center of tracker should be 1.5 cm below diaphragm if localizer was acquired with expiration breath hold  
- Center of tracker should be 1.5 cm above diaphragm if localizer was acquired with inspiration breath hold  
- Center of tracker should be placed on the diaphragm if localizer was acquired free breathing  
\*Please review operator manual for additional information  
Expiration-Breath Hold Tracker Placement*

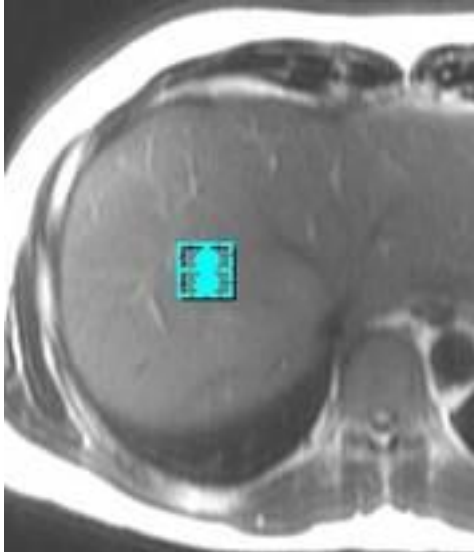
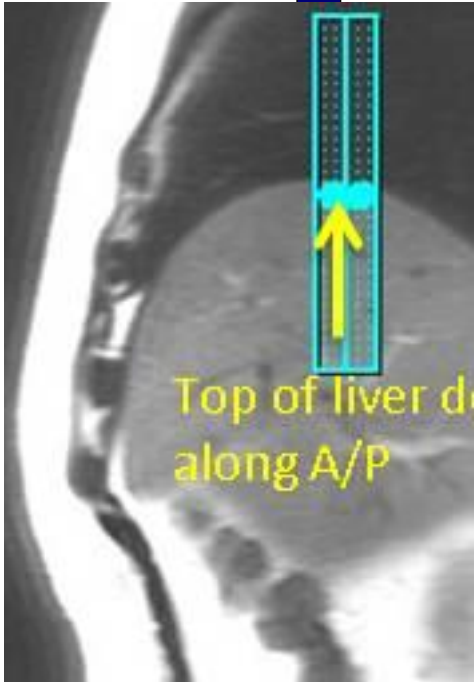


*Inspiration-Breath Hold Tracker Placement*

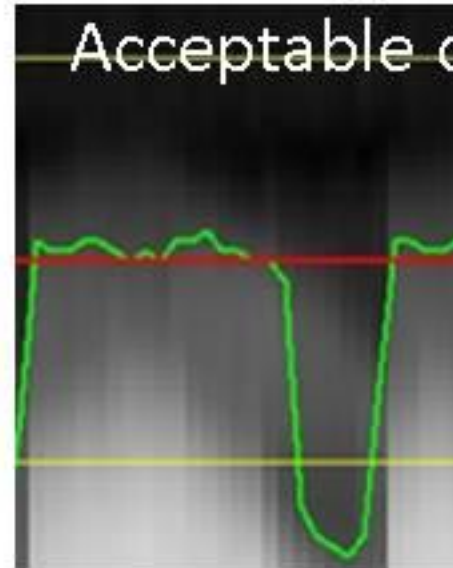


*Free Breathing Tracker Placement*





## Easy Tro



-> No need to ch  
anything since g  
waveform refle  
respiratory statu

McLeod Pavilion

Protocol: adult\_abdomen\_MRCP With and Without

PATIENT POSITION		IMAGING PARAMETERS	
Patient Entry	Feet First	Imaging Mode	2D
Patient Position	Supine	Pulse Sequence	FSE-XL
Coil Configuration	Body	Imaging Options	FC, EDR, TRF, Fast, FR, Nav, ARC
Plane	AXIAL		
Series Description	Ax T2 frFSE Nav FS		
SCAN TIMING		SCAN RANGE	
Flip Angle	111	FOV	38.0
TE	102.0	Slice Thickness	7.0
Number of Echoes	1	Slice Spacing	1.0
Echo Train Length	17		
Receiver Bandwidth	62.50	ACQ TIMING	
		Freq	384
		Phase	256
		Freq DIR	R/L
		Fat Shift DIR	Normal (L)
		NEX	2.00
		Phase FOV	1.00
		Auto Shim	Auto
		Phase Correction	No
		Flow Direction Compensation	Slice
IMAGE ENHANCE		USER CVS	
Filter Choice	A	User CV19	1.00
		User CV22	1.00
GATING/TRIGGER		MULTI-PHASE	
Auto Trigger Type	Off	Seperate Series	0
Resp. Trigger Window	50	Mask Phase	0
		Mask Pause	0
FMRI		DIFFUSION	
PSD Trigger	Internal	Recon All Images	On
View Order	Bottom/Up		
# of Repetitions REST	0	TRACKER	
# of Repetitions ACTIVE	0	Tracker Length	120.0
		Tracker Thickness	20.0
SAT			
Tag Type	None		
Fat/Water Saturation	Fat		
TRICKS			
Pause On/Off	On		
Auto Subtract	0		
Auto SCIC	2		
CONTRAST			
Contrast Yes/No	No		

Ax T2 frFSE Nav FS

Ax T2 frFSE Nav FS

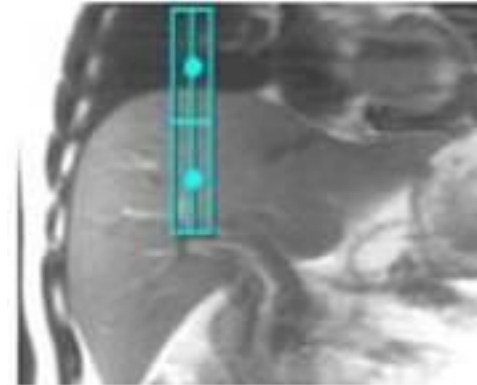


---

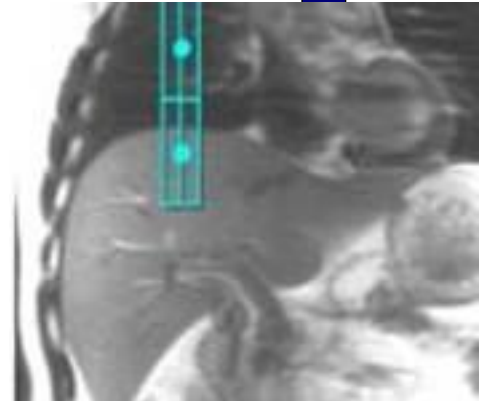
OTHERS

**Protocol Notes**

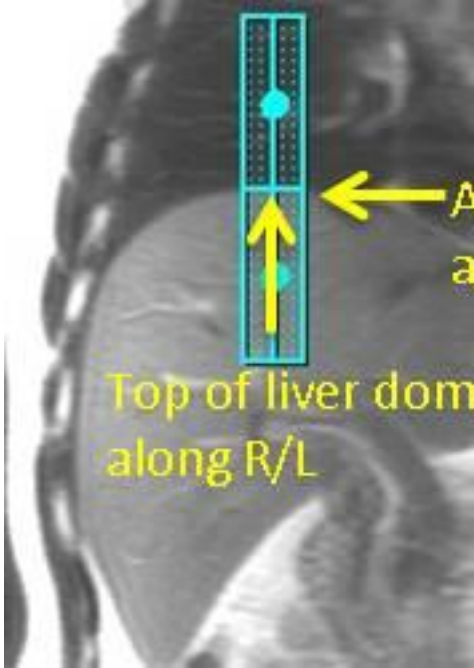
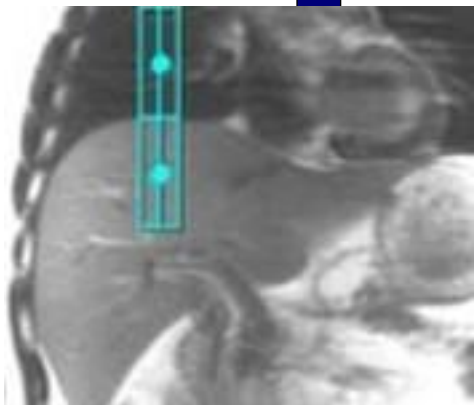
*Auto Tracker placement is turned on  
Tracker will be placed automatically  
Manual Placement  
Instructions:  
Navigator Tracker  
Placement Considerations  
\* Place navigator tracker on a breath hold localizer for the optimum performance\*  
- Center of tracker should be 1.5 cm below diaphragm if localizer was acquired with expiration breath hold  
- Center of tracker should be 1.5 cm above diaphragm if localizer was acquired with inspiration breath hold  
- Center of tracker should be placed on the diaphragm if localizer was acquired free breathing  
\*Please review operator manual for additional information  
Expiration-Breath Hold Tracker Placement*

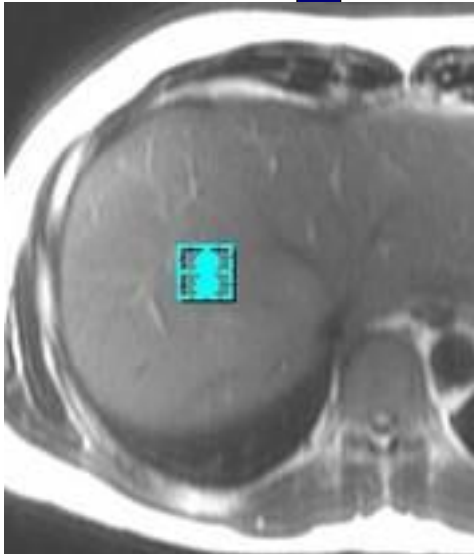
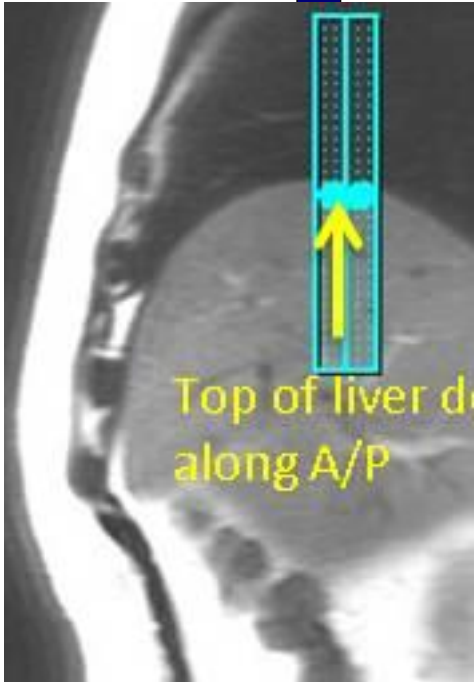


*Inspiration-Breath Hold Tracker Placement*

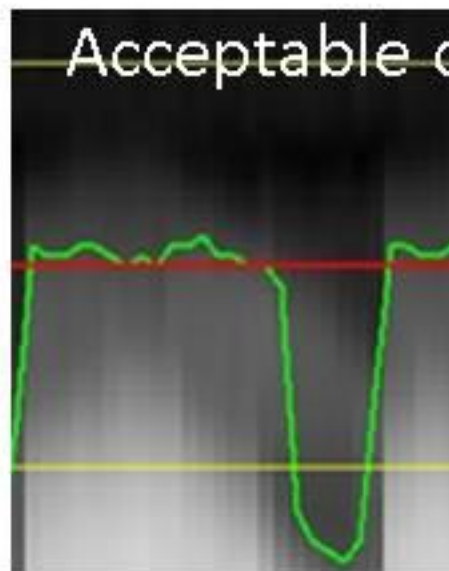


*Free Breathing Tracker Placement*





## Easy Tro



-> No need to check anything since green waveform reflects respiratory status

Protocol: adult\_abdomen\_MRCP With and Without

PATIENT POSITION	
Patient Entry	Feet First
Patient Position	Supine
Coil Configuration	Body
Plane	AXIAL
Series Description	Ax DWI 3:1 B-800-500-50

SCAN TIMING	
TE	Minimum
Number of Echoes	1
Number of Shots	1

IMAGE ENHANCE	
Filter Choice	None

GATING/TRIGGER	
Auto Trigger Type	Off
Resp. Trigger Window	30

FMRI	
PSD Trigger	Internal
View Order	Bottom/Up
# of Repetitions REST	0
# of Repetitions ACTIVE	0

SAT	
Tag Type	None
Fat/Water Saturation	Fat

TRICKS	
Pause On/Off	On
Auto Subtract	0
Auto SCIC	2

CONTRAST	
Contrast Yes/No	No

IMAGING PARAMETERS	
Imaging Mode	2D
Pulse Sequence	Spin Echo
Imaging Options	EDR, EPI, DIFF, Asset, Nav

SCAN RANGE	
FOV	40.0
Slice Thickness	7.0
Slice Spacing	1.0

ACQ TIMING	
Freq	80
Phase	128
Freq DIR	R/L
Phase FOV	1.00
Auto Shim	Auto
Phase Correction	Yes

USER CVS	
User CV0	1.00
User CV17	1.00
User CV18	1.00

MULTI-PHASE	
Seperate Series	0
Mask Phase	0
Mask Pause	0

DIFFUSION	
Optimized TE	Yes
Diffusion Directions	64
Number of Diffusion Directions	1
Number of T2 Images	0
Dual Spin Echo	Off
Recon All Images	On

TRACKER	
Tracker Length	120.0
Tracker Thickness	20.0

Ax DWI 3:1 B-800-500-50

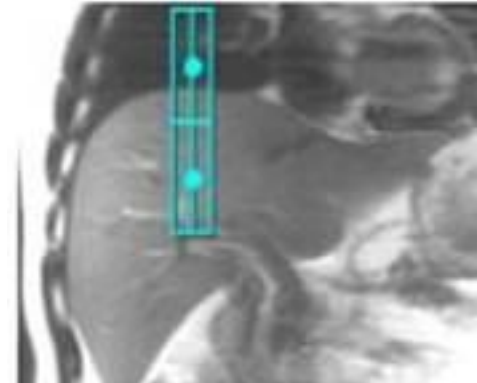
Ax DWI 3:1 B-800-500-50

---

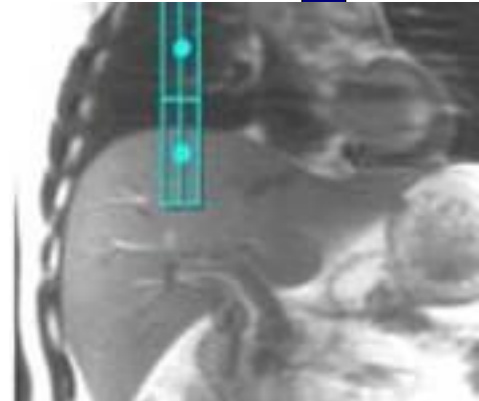
OTHERS

**Protocol Notes**

*Auto Tracker placement is turned on  
Tracker will be placed automatically  
Manual Placement  
Instructions:  
Navigator Tracker  
Placement Considerations  
\* Place navigator tracker on a breath hold localizer for the optimum performance\*  
- Center of tracker should be 1.5 cm below diaphragm if localizer was acquired with expiration breath hold  
- Center of tracker should be 1.5 cm above diaphragm if localizer was acquired with inspiration breath hold  
- Center of tracker should be placed on the diaphragm if localizer was acquired free breathing  
\*Please review operator manual for additional information  
Expiration-Breath Hold Tracker Placement*

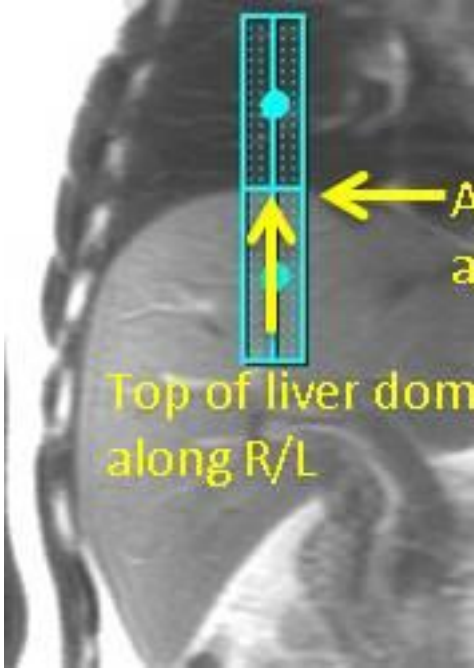
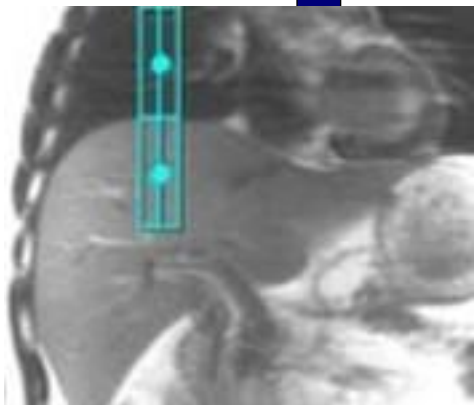


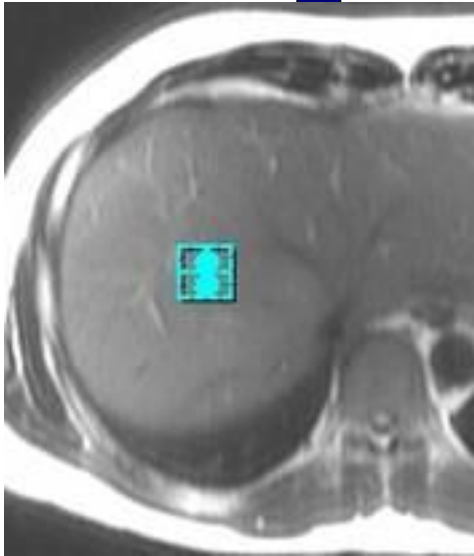
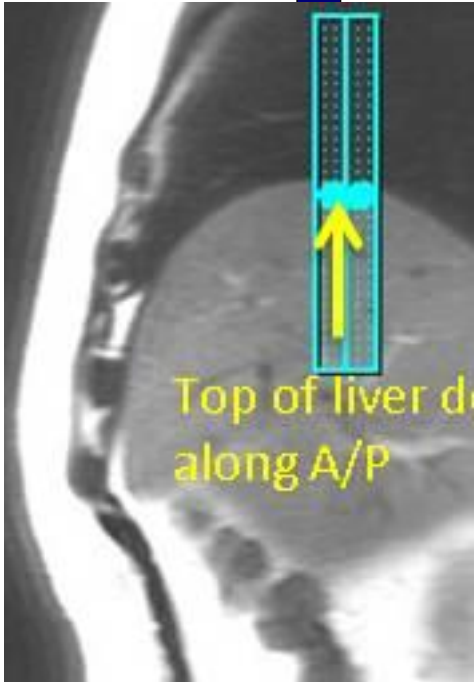
*Inspiration-Breath Hold Tracker Placement*



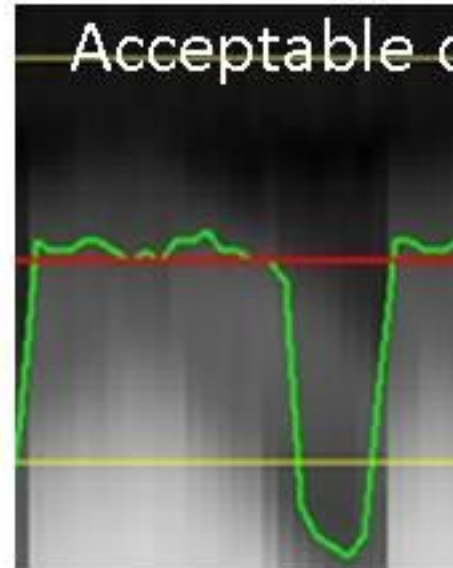
*Free Breathing Tracker Placement*







## Easy Tro



-> No need to ch  
anything since g  
waveform refle  
respiratory statu

Protocol: adult\_abdomen\_MRCP With and Without

<b>PATIENT POSITION</b>		<b>IMAGING PARAMETERS</b>	
Patient Entry	<i>Feet First</i>	Imaging Mode	<i>3D</i>
Patient Position	<i>Supine</i>	Pulse Sequence	<i>FRFSE-XL</i>
Coil Configuration	<i>Body</i>	Imaging Options	<i>EDR, Fast, ZIP2, T2P, Asset, FR, Nav, MRCP</i>
Plane	<i>OBLIQUE</i>	<b>SCAN RANGE</b>	
Series Description	<i>3D Obi MRCP Nav</i>	FOV	<i>34.0</i>
<b>SCAN TIMING</b>		Slice Thickness	<i>1.4</i>
TE	<i>900.0</i>	Location per Slab	<i>64</i>
Number of Echoes	<i>1</i>	Overlap Locations	<i>0</i>
Echo Train Length	<i>120</i>	<b>ACQ TIMING</b>	
Receiver Bandwidth	<i>41.67</i>	Freq	<i>288</i>
<b>IMAGE ENHANCE</b>		Phase	<i>288</i>
Filter Choice	<i>None</i>	Freq DIR	<i>Unswap</i>
<b>GATING/TRIGGER</b>		NEX	<i>1.00</i>
Auto Trigger Type	<i>Off</i>	Phase FOV	<i>1.00</i>
Resp. Trigger Window	<i>30</i>	Auto Shim	<i>Auto</i>
<b>MULTI-PHASE</b>		Phase Correction	<i>No</i>
Seperate Series	<i>0</i>	<b>FMRI</b>	
Mask Phase	<i>0</i>	PSD Trigger	<i>Internal</i>
Mask Pause	<i>0</i>	View Order	<i>Bottom/Up</i>
<b>DIFFUSION</b>		# of Repetitions REST	<i>0</i>
Recon All Images	<i>On</i>	# of Repetitions ACTIVE	<i>0</i>
<b>TRACKER</b>		<b>SAT</b>	
Tracker Length	<i>120.0</i>	Tag Type	<i>None</i>
Tracker Thickness	<i>20.0</i>	Fat/Water Saturation	<i>Fat</i>
		<b>TRICKS</b>	
		Pause On/Off	<i>On</i>
		Auto Subtract	<i>0</i>
		Auto SCIC	<i>Off</i>
		<b>CONTRAST</b>	
		Contrast Yes/No	<i>No</i>

3D Obi MRCP Nav

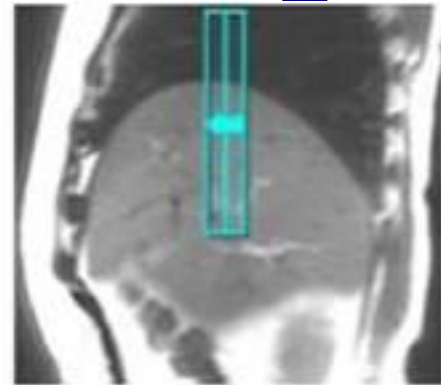
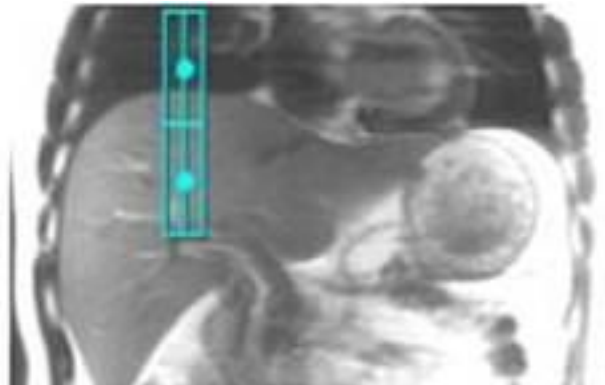
3D Obi MRCP Nav

---

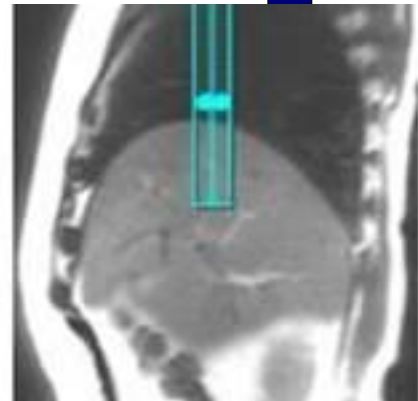
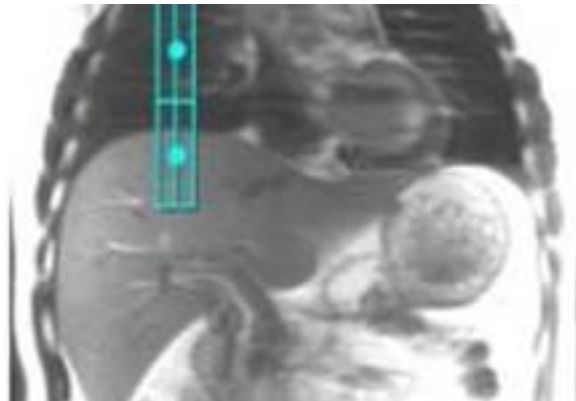
<p>OTHERS</p>	
---------------	--

**Protocol Notes**

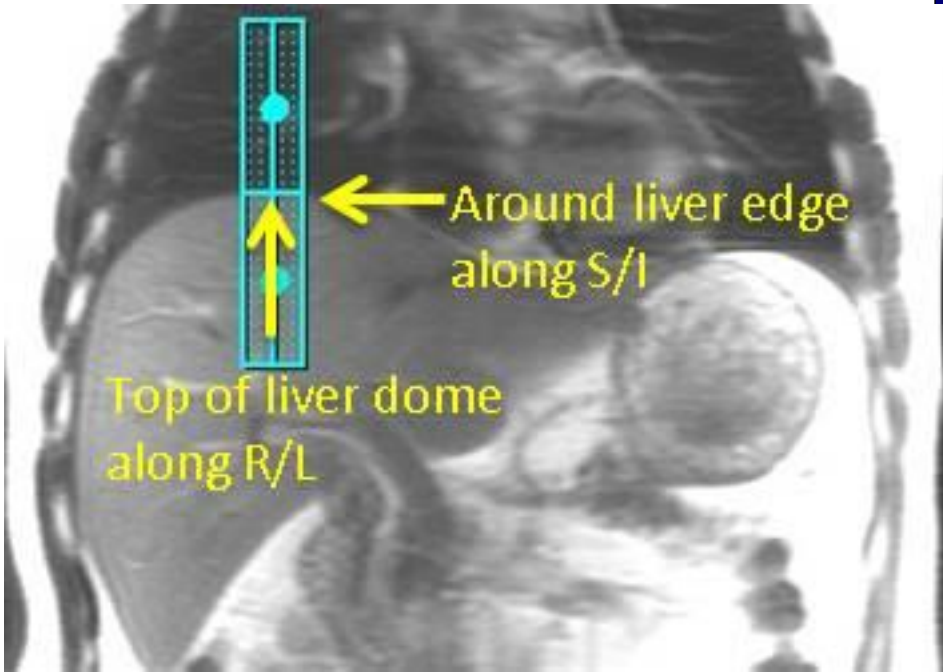
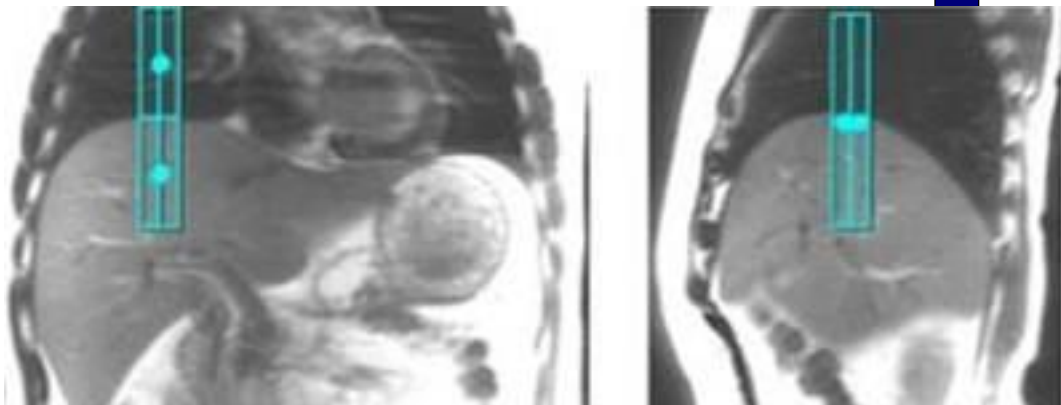
*Auto Tracker placement is turned on  
Tracker will be placed automatically  
Manual Placement  
Instructions:  
Navigator Tracker  
Placement Considerations  
\* Place navigator tracker on a breath hold localizer for the optimum performance\*  
- Center of tracker should be 1.5 cm below diaphragm if localizer was acquired with expiration breath hold  
- Center of tracker should be 1.5 cm above diaphragm if localizer was acquired with inspiration breath hold  
- Center of tracker should be placed on the diaphragm if localizer was acquired free breathing  
\*Please review operator manual for additional information  
Expiration-Breath Hold Tracker Placement*

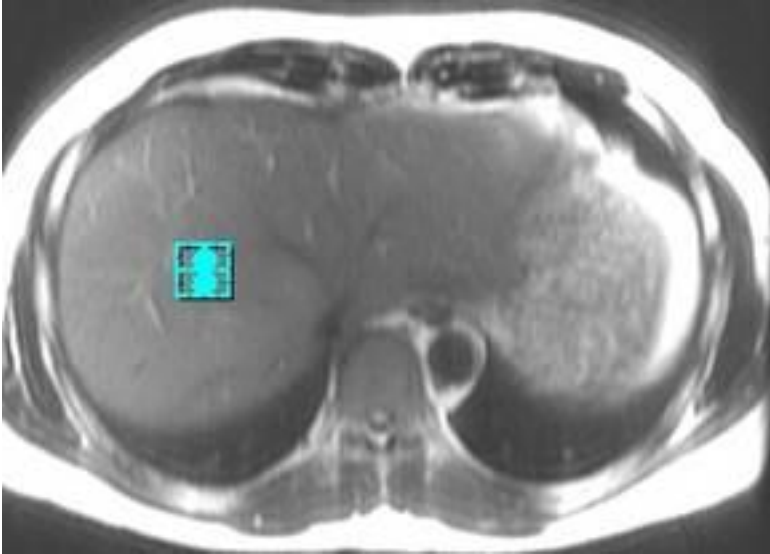
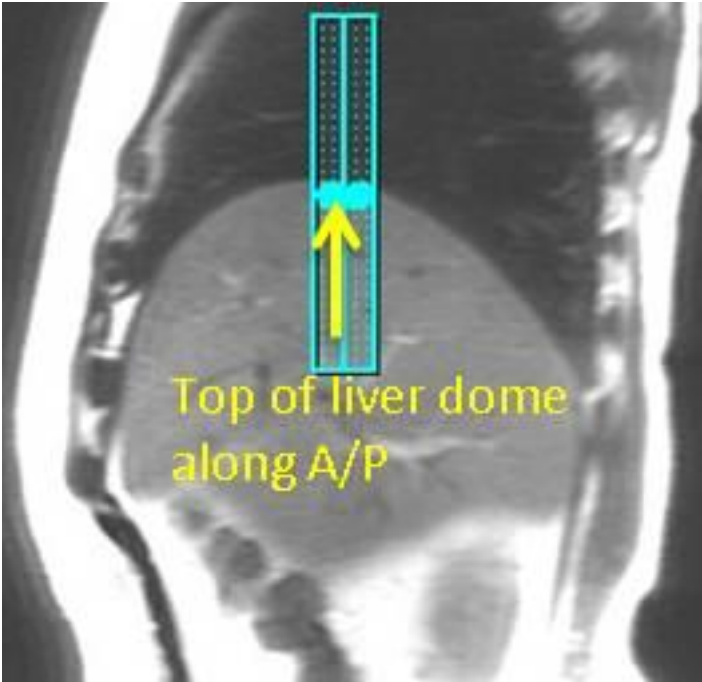


*Inspiration-Breath Hold Tracker Placement*



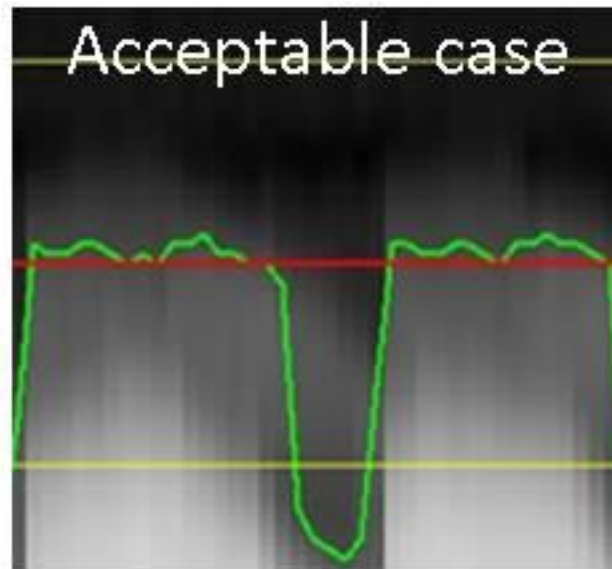
*Free Breathing Tracker Placement*



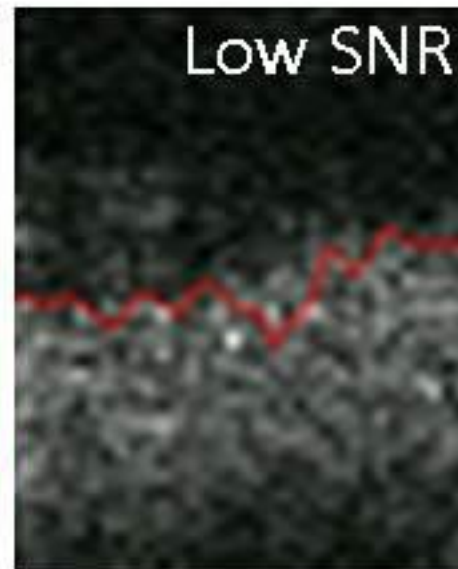




## Easy Troubleshooting fo



-> No need to change anything since green waveform reflects respiratory status



-> Increase Track Thickness

Protocol: adult\_abdomen\_MRCP With and Without

Radial SSFSE Thick ASPIR Thick BH	<b>PATIENT POSITION</b>		<b>IMAGING PARAMETERS</b>	
	Patient Entry	<i>Feet First</i>	Imaging Mode	<i>2D</i>
	Patient Position	<i>Supine</i>	Pulse Sequence	<i>Spin Echo</i>
	Coil Configuration	<i>Body</i>	Imaging Options	<i>Fast, SS, Asset</i>
	Plane	<i>OBLIQUE</i>	<b>SCAN RANGE</b>	
	Series Description	<i>Radial SSFSE Thick ASPIR Thick BH</i>	FOV	<i>38.0</i>
	<b>SCAN TIMING</b>		Slice Thickness	<i>40.0</i>
	TE	<i>900.0</i>	Slice Spacing	<i>0.0</i>
	Number of Echoes	<i>1</i>	<b>ACQ TIMING</b>	
	TR	<i>Minimum</i>	Freq	<i>320</i>
	TI	<i>170</i>	Phase	<i>256</i>
	Receiver Bandwidth	<i>31.25</i>	Freq DIR	<i>Unswap</i>
	<b>IMAGE ENHANCE</b>		NEX	<i>1.00</i>
	Filter Choice	<i>None</i>	# of Acq. Before Pause	<i>1</i>
	<b>GATING/TRIGGER</b>		Phase FOV	<i>1.00</i>
	Auto Trigger Type	<i>Off</i>	Auto Shim	<i>Auto</i>
	<b>FMRI</b>		Phase Correction	<i>No</i>
	PSD Trigger	<i>Internal</i>	<b>USER CVS</b>	
	Slice Order	<i>Interleaved</i>	User CV1	<i>1.00</i>
	View Order	<i>Bottom/Up</i>	User CV2	<i>264.00</i>
	# of Repetitions REST	<i>0</i>	User CV13	<i>1.00</i>
	# of Repetitions ACTIVE	<i>0</i>	<b>MULTI-PHASE</b>	
	<b>SAT</b>		Seperate Series	<i>0</i>
	Tag Type	<i>None</i>	Mask Phase	<i>0</i>
	Fat/Water Saturation	<i>Fat Special</i>	Mask Pause	<i>0</i>
<b>TRICKS</b>		<b>DIFFUSION</b>		
Pause On/Off	<i>On</i>	Recon All Images	<i>On</i>	
Auto Subtract	<i>0</i>	<b>CONTRAST</b>		
Auto SCIC	<i>Off</i>	Contrast Yes/No	<i>No</i>	

Radial SSFSE Thick ASPIR Thick BH

Protocol: adult\_abdomen\_MRCP With and Without

Radial SSFSE Thick ASPIR Thick BH	<b>PATIENT POSITION</b>		<b>IMAGING PARAMETERS</b>	
	Patient Entry	<i>Feet First</i>	Imaging Mode	<i>2D</i>
	Patient Position	<i>Supine</i>	Pulse Sequence	<i>Spin Echo</i>
	Coil Configuration	<i>Body</i>	Imaging Options	<i>Fast, SS, Asset</i>
	Plane	<i>OBLIQUE</i>	<b>SCAN RANGE</b>	
	Series Description	<i>Radial SSFSE Thick ASPIR Thick BH</i>	FOV	<i>38.0</i>
	<b>SCAN TIMING</b>		Slice Thickness	<i>40.0</i>
	TE	<i>900.0</i>	Slice Spacing	<i>0.0</i>
	Number of Echoes	<i>1</i>	<b>ACQ TIMING</b>	
	TR	<i>Minimum</i>	Freq	<i>320</i>
	TI	<i>170</i>	Phase	<i>256</i>
	Receiver Bandwidth	<i>31.25</i>	Freq DIR	<i>Unswap</i>
	<b>IMAGE ENHANCE</b>		NEX	<i>1.00</i>
	Filter Choice	<i>None</i>	# of Acq. Before Pause	<i>1</i>
	<b>GATING/TRIGGER</b>		Phase FOV	<i>1.00</i>
	Auto Trigger Type	<i>Off</i>	Auto Shim	<i>Auto</i>
	<b>FMRI</b>		Phase Correction	<i>No</i>
	PSD Trigger	<i>Internal</i>	<b>USER CVS</b>	
	Slice Order	<i>Interleaved</i>	User CV1	<i>1.00</i>
	View Order	<i>Bottom/Up</i>	User CV2	<i>264.00</i>
# of Repetitions REST	<i>0</i>	User CV13	<i>1.00</i>	
# of Repetitions ACTIVE	<i>0</i>	<b>MULTI-PHASE</b>		
<b>SAT</b>		Seperate Series	<i>0</i>	
Tag Type	<i>None</i>	Mask Phase	<i>0</i>	
Fat/Water Saturation	<i>Fat Special</i>	Mask Pause	<i>0</i>	
<b>TRICKS</b>		<b>DIFFUSION</b>		
Pause On/Off	<i>On</i>	Recon All Images	<i>On</i>	
Auto Subtract	<i>0</i>	<b>CONTRAST</b>		
Auto SCIC	<i>Off</i>	Contrast Yes/No	<i>No</i>	

Radial SSFSE Thick ASPIR Thick BH

Protocol: adult\_abdomen\_MRCP With and Without

Radial SSFSE Thick ASPIR Thick BH	<b>PATIENT POSITION</b>		<b>IMAGING PARAMETERS</b>	
	Patient Entry	<i>Feet First</i>	Imaging Mode	<i>2D</i>
	Patient Position	<i>Supine</i>	Pulse Sequence	<i>Spin Echo</i>
	Coil Configuration	<i>Body</i>	Imaging Options	<i>Fast, SS, Asset</i>
	Plane	<i>OBLIQUE</i>	<b>SCAN RANGE</b>	
	Series Description	<i>Radial SSFSE Thick ASPIR Thick BH</i>	FOV	<i>38.0</i>
	<b>SCAN TIMING</b>		Slice Thickness	<i>40.0</i>
	TE	<i>900.0</i>	Slice Spacing	<i>0.0</i>
	Number of Echoes	<i>1</i>	<b>ACQ TIMING</b>	
	TR	<i>Minimum</i>	Freq	<i>320</i>
	TI	<i>170</i>	Phase	<i>256</i>
	Receiver Bandwidth	<i>31.25</i>	Freq DIR	<i>Unswap</i>
	<b>IMAGE ENHANCE</b>		NEX	<i>1.00</i>
	Filter Choice	<i>None</i>	# of Acq. Before Pause	<i>1</i>
	<b>GATING/TRIGGER</b>		Phase FOV	<i>1.00</i>
	Auto Trigger Type	<i>Off</i>	Auto Shim	<i>Auto</i>
	<b>FMRI</b>		Phase Correction	<i>No</i>
	PSD Trigger	<i>Internal</i>	<b>USER CVS</b>	
	Slice Order	<i>Interleaved</i>	User CV1	<i>1.00</i>
	View Order	<i>Bottom/Up</i>	User CV2	<i>264.00</i>
	# of Repetitions REST	<i>0</i>	User CV13	<i>1.00</i>
	# of Repetitions ACTIVE	<i>0</i>	<b>MULTI-PHASE</b>	
	<b>SAT</b>		Seperate Series	<i>0</i>
	Tag Type	<i>None</i>	Mask Phase	<i>0</i>
	Fat/Water Saturation	<i>Fat Special</i>	Mask Pause	<i>0</i>
<b>TRICKS</b>		<b>DIFFUSION</b>		
Pause On/Off	<i>On</i>	Recon All Images	<i>On</i>	
Auto Subtract	<i>0</i>	<b>CONTRAST</b>		
Auto SCIC	<i>Off</i>	Contrast Yes/No	<i>No</i>	

Radial SSFSE Thick ASPIR Thick BH

McLeod Pavilion

Protocol: adult\_abdomen\_MRCP With and Without

3D Ax LAVA Flex Mph BH	<b>PATIENT POSITION</b>		<b>IMAGING PARAMETERS</b>	
	Patient Entry	<i>Feet First</i>	Imaging Mode	<i>3D</i>
	Patient Position	<i>Supine</i>	Pulse Sequence	<i>LAVA</i>
	Coil Configuration	<i>Body</i>	Imaging Options	<i>EDR, Fast, ZIP2, MPhVar, ARC, Flex</i>
	Plane	<i>AXIAL</i>	IDEAL	<i>15</i>
	Series Description	<i>3D Ax LAVA Flex Mph BH</i>	<b>SCAN RANGE</b>	
	<b>SCAN TIMING</b>		FOV	<i>42.0</i>
	Flip Angle	<i>12</i>	Slice Thickness	<i>4.4</i>
	TE	<i>Minimum</i>	Location per Slab	<i>56</i>
	Number of Echoes	<i>2</i>	Overlap Locations	<i>0</i>
	Receiver Bandwidth	<i>142.86</i>	<b>ACQ TIMING</b>	
	<b>IMAGE ENHANCE</b>		Freq	<i>300</i>
	Filter Choice	<i>A</i>	Phase	<i>200</i>
	<b>GATING/TRIGGER</b>		Freq DIR	<i>R/L</i>
	Auto Trigger Type	<i>Off</i>	NEX	<i>1.00</i>
	<b>FMRI</b>		Phase FOV	<i>0.80</i>
	PSD Trigger	<i>Internal</i>	Auto Shim	<i>Auto</i>
	View Order	<i>Bottom/Up</i>	Phase Correction	<i>No</i>
	# of Repetitions REST	<i>0</i>	<b>USER CVS</b>	
	# of Repetitions ACTIVE	<i>0</i>	User CV15	<i>1.00</i>
	<b>SAT</b>		<b>MULTI-PHASE</b>	
	Tag Type	<i>None</i>	# of Phases	<i>3</i>
	<b>TRICKS</b>		Seperate Series	<i>1</i>
	Pause On/Off	<i>On</i>	Trigger Delay without AV	<i>6</i>
	Auto Subtract	<i>0</i>	Mask Phase	<i>1</i>
Auto SCIC	<i>2</i>	Mask Pause	<i>1</i>	
<b>OTHERS</b>		<b>DIFFUSION</b>		
Protocol Notes	<i>CHANGE TO SINGLE PHASE FOR MRCP W/O CONTRAST.</i>	Recon All Images	<i>On</i>	
		<b>CONTRAST</b>		
		Contrast Yes/No	<i>No</i>	

3D Ax LAVA Flex Mph BH

McLeod Pavilion

Protocol: adult\_abdomen\_MRCP With and Without

3D Ax LAVA Flex 3MIN	<b>PATIENT POSITION</b>		<b>IMAGING PARAMETERS</b>		3D Ax LAVA Flex 3MIN
	Patient Entry	<i>Feet First</i>	Imaging Mode	<i>3D</i>	
	Patient Position	<i>Supine</i>	Pulse Sequence	<i>LAVA</i>	
	Coil Configuration	<i>Body</i>	Imaging Options	<i>EDR, Fast, ZIP2, ARC, Flex</i>	
	Plane	<i>AXIAL</i>	IDEAL	<i>3</i>	
	Series Description	<i>3D Ax LAVA Flex 3MIN</i>	<b>SCAN RANGE</b>		
	<b>SCAN TIMING</b>		FOV	<i>42.0</i>	
	Flip Angle	<i>12</i>	Slice Thickness	<i>4.4</i>	
	TE	<i>Minimum</i>	Location per Slab	<i>56</i>	
	Number of Echoes	<i>2</i>	Overlap Locations	<i>0</i>	
	Receiver Bandwidth	<i>142.86</i>	<b>ACQ TIMING</b>		
	<b>IMAGE ENHANCE</b>		Freq	<i>300</i>	
	Filter Choice	<i>A</i>	Phase	<i>200</i>	
	<b>GATING/TRIGGER</b>		Freq DIR	<i>R/L</i>	
	Auto Trigger Type	<i>Off</i>	NEX	<i>1.00</i>	
	<b>FMRI</b>		Phase FOV	<i>1.10</i>	
	PSD Trigger	<i>Internal</i>	Auto Shim	<i>Auto</i>	
	View Order	<i>Bottom/Up</i>	Phase Correction	<i>No</i>	
	# of Repetitions REST	<i>0</i>	<b>USER CVS</b>		
	# of Repetitions ACTIVE	<i>0</i>	User CV4	<i>6.60</i>	
	<b>SAT</b>		User CV6	<i>1.00</i>	
	Tag Type	<i>None</i>	<b>MULTI-PHASE</b>		
	<b>TRICKS</b>		Seperate Series	<i>0</i>	
	Pause On/Off	<i>On</i>	Trigger Delay without AV	<i>6.6</i>	
	Auto Subtract	<i>0</i>	Mask Phase	<i>0</i>	
Auto SCIC	<i>2</i>	Mask Pause	<i>0</i>		
		<b>DIFFUSION</b>			
		Recon All Images	<i>On</i>		
		<b>CONTRAST</b>			
		Contrast Yes/No	<i>No</i>		

Protocol: adult\_abdomen\_MRCP With and Without

3D Ax LAVA Flex 6MIN	<b>PATIENT POSITION</b>		<b>IMAGING PARAMETERS</b>		3D Ax LAVA Flex 6MIN
	Patient Entry	<i>Feet First</i>	Imaging Mode	<i>3D</i>	
	Patient Position	<i>Supine</i>	Pulse Sequence	<i>LAVA</i>	
	Coil Configuration	<i>Body</i>	Imaging Options	<i>EDR, Fast, ZIP2, ARC, Flex</i>	
	Plane	<i>AXIAL</i>	IDEAL	<i>3</i>	
	Series Description	<i>3D Ax LAVA Flex 6MIN</i>	<b>SCAN RANGE</b>		
	<b>SCAN TIMING</b>		FOV	<i>42.0</i>	
	Flip Angle	<i>12</i>	Slice Thickness	<i>4.4</i>	
	TE	<i>Minimum</i>	Location per Slab	<i>56</i>	
	Number of Echoes	<i>2</i>	Overlap Locations	<i>0</i>	
	Receiver Bandwidth	<i>142.86</i>	<b>ACQ TIMING</b>		
	<b>IMAGE ENHANCE</b>		Freq	<i>300</i>	
	Filter Choice	<i>A</i>	Phase	<i>200</i>	
	<b>GATING/TRIGGER</b>		Freq DIR	<i>R/L</i>	
	Auto Trigger Type	<i>Off</i>	NEX	<i>1.00</i>	
	<b>FMRI</b>		Phase FOV	<i>1.10</i>	
	PSD Trigger	<i>Internal</i>	Auto Shim	<i>Auto</i>	
	View Order	<i>Bottom/Up</i>	Phase Correction	<i>No</i>	
	# of Repetitions REST	<i>0</i>	<b>USER CVS</b>		
	# of Repetitions ACTIVE	<i>0</i>	User CV4	<i>6.60</i>	
	<b>SAT</b>		User CV6	<i>1.00</i>	
	Tag Type	<i>None</i>	<b>MULTI-PHASE</b>		
	<b>TRICKS</b>		Seperate Series	<i>0</i>	
	Pause On/Off	<i>On</i>	Trigger Delay without AV	<i>6.6</i>	
	Auto Subtract	<i>0</i>	Mask Phase	<i>0</i>	
Auto SCIC	<i>2</i>	Mask Pause	<i>0</i>		
		<b>DIFFUSION</b>			
		Recon All Images	<i>On</i>		
		<b>CONTRAST</b>			
		Contrast Yes/No	<i>No</i>		

McLeod Pavilion

Protocol: adult\_abdomen\_MRCP With and Without

3D Ax LAVA Flex 10 MIN	<b>PATIENT POSITION</b>		<b>IMAGING PARAMETERS</b>	
	Patient Entry	<i>Feet First</i>	Imaging Mode	<i>3D</i>
	Patient Position	<i>Supine</i>	Pulse Sequence	<i>LAVA</i>
	Coil Configuration	<i>Body</i>	Imaging Options	<i>EDR, Fast, ZIP2, ARC, Flex</i>
	Plane	<i>AXIAL</i>	IDEAL	<i>3</i>
	Series Description	<i>3D Ax LAVA Flex 10 MIN</i>	<b>SCAN RANGE</b>	
	<b>SCAN TIMING</b>		FOV	<i>42.0</i>
	Flip Angle	<i>12</i>	Slice Thickness	<i>4.4</i>
	TE	<i>Minimum</i>	Location per Slab	<i>56</i>
	Number of Echoes	<i>2</i>	Overlap Locations	<i>0</i>
	Receiver Bandwidth	<i>142.86</i>	<b>ACQ TIMING</b>	
	<b>IMAGE ENHANCE</b>		Freq	<i>300</i>
	Filter Choice	<i>A</i>	Phase	<i>200</i>
	<b>GATING/TRIGGER</b>		Freq DIR	<i>R/L</i>
	Auto Trigger Type	<i>Off</i>	NEX	<i>1.00</i>
	<b>FMRI</b>		Phase FOV	<i>1.10</i>
	PSD Trigger	<i>Internal</i>	Auto Shim	<i>Auto</i>
	View Order	<i>Bottom/Up</i>	Phase Correction	<i>No</i>
	# of Repetitions REST	<i>0</i>	<b>USER CVS</b>	
	# of Repetitions ACTIVE	<i>0</i>	User CV4	<i>6.60</i>
	<b>SAT</b>		User CV6	<i>1.00</i>
	Tag Type	<i>None</i>	<b>MULTI-PHASE</b>	
	<b>TRICKS</b>		Seperate Series	<i>0</i>
	Pause On/Off	<i>On</i>	Trigger Delay without AV	<i>6.6</i>
	Auto Subtract	<i>0</i>	Mask Phase	<i>0</i>
Auto SCIC	<i>2</i>	Mask Pause	<i>0</i>	
		<b>DIFFUSION</b>		
		Recon All Images	<i>On</i>	
		<b>CONTRAST</b>		
		Contrast Yes/No	<i>No</i>	

3D Ax LAVA Flex 10 MIN



Protocol: adult\_abdomen\_MRCP With and Without

PATIENT POSITION		IMAGING PARAMETERS	
Patient Entry	<i>Feet First</i>	Imaging Mode	<i>3D</i>
Patient Position	<i>Supine</i>	Pulse Sequence	<i>LAVA</i>
Coil Configuration	<i>Body</i>	Imaging Options	<i>EDR, Fast, ZIP2, ARC, Flex</i>
Plane	<i>CORONAL</i>	IDEAL	<i>3</i>
Series Description	<i>3D Cor LAVA Flex BH</i>	SCAN RANGE	
SCAN TIMING		FOV	<i>44.0</i>
Flip Angle	<i>12</i>	Slice Thickness	<i>4.4</i>
TE	<i>Minimum</i>	Location per Slab	<i>56</i>
Number of Echoes	<i>2</i>	Overlap Locations	<i>0</i>
Receiver Bandwidth	<i>142.86</i>	ACQ TIMING	
IMAGE ENHANCE		Freq	<i>300</i>
Filter Choice	<i>A</i>	Phase	<i>200</i>
GATING/TRIGGER		Freq DIR	<i>S/I</i>
Auto Trigger Type	<i>Off</i>	NEX	<i>1.00</i>
FMRI		Phase FOV	<i>1.00</i>
PSD Trigger	<i>Internal</i>	Auto Shim	<i>Auto</i>
Slice Order	<i>Interleaved</i>	Phase Correction	<i>No</i>
View Order	<i>Bottom/Up</i>	USER CVS	
# of Repetitions REST	<i>0</i>	User CV4	<i>6.60</i>
# of Repetitions ACTIVE	<i>0</i>	User CV6	<i>1.00</i>
SAT		MULTI-PHASE	
Tag Type	<i>None</i>	Seperate Series	<i>0</i>
TRICKS		Trigger Delay without AV	<i>6.6</i>
Pause On/Off	<i>On</i>	Mask Phase	<i>0</i>
Auto Subtract	<i>0</i>	Mask Pause	<i>0</i>
Auto SCIC	<i>2</i>	DIFFUSION	
		Recon All Images	<i>On</i>
		CONTRAST	
		Contrast Yes/No	<i>No</i>

3D Cor LAVA Flex BH

3D Cor LAVA Flex BH