

McLeod Pavilion

Protocol: adult_abdomen_MR ENTEROGRAPHY

PATIENT POSITION		IMAGING PARAMETERS	
Patient Entry	<i>Feet First</i>	Imaging Mode	<i>2D</i>
Patient Position	<i>Supine</i>	Pulse Sequence	<i>Spin Echo</i>
Coil Configuration	<i>Body</i>	Imaging Options	<i>Seq, EDR, TRF, Fast, SS, FR, ARC</i>
Plane	<i>3-PLANE</i>	SCAN RANGE	
Series Description	<i>3-Plane Localizer</i>	FOV	<i>48.0</i>
SCAN TIMING		Slice Thickness	<i>8.0</i>
TE	<i>80.0</i>	Slice Spacing	<i>5.0</i>
Number of Echoes	<i>1</i>	ACQ TIMING	
TR	<i>525.0</i>	Freq	<i>384</i>
Receiver Bandwidth	<i>83.33</i>	Phase	<i>160</i>
IMAGE ENHANCE		Freq DIR	<i>Unswap</i>
Filter Choice	<i>None</i>	# of Acq. Before Pause	<i>0</i>
GATING/TRIGGER		Phase FOV	<i>1.00</i>
Auto Trigger Type	<i>Off</i>	Auto Shim	<i>Auto</i>
FMRI		Phase Correction	<i>No</i>
PSD Trigger	<i>Internal</i>	USER CVS	
View Order	<i>Bottom/Up</i>	User CV1	<i>1.00</i>
# of Repetitions REST	<i>0</i>	MULTI-PHASE	
# of Repetitions ACTIVE	<i>0</i>	Seperate Series	<i>0</i>
SAT		Mask Phase	<i>0</i>
Tag Type	<i>None</i>	Mask Pause	<i>0</i>
TRICKS		DIFFUSION	
Pause On/Off	<i>On</i>	Recon All Images	<i>On</i>
Auto Subtract	<i>0</i>	CONTRAST	
Auto SCIC	<i>Off</i>	Contrast Yes/No	<i>No</i>

3-Plane Localizer

3-Plane Localizer

Protocol: adult_abdomen_MR ENTEROGRAPHY

RN TO INJECT GLUCAGON	PATIENT POSITION		IMAGING PARAMETERS		RN TO INJECT GLUCAGON
	Patient Entry	<i>Feet First</i>	Imaging Mode	<i>2D</i>	
	Patient Position	<i>Supine</i>	Pulse Sequence	<i>Spin Echo</i>	
	Coil Configuration	<i>Body</i>	Imaging Options	<i>Seq, EDR, TRF, Fast, SS, FR, ARC</i>	
	Plane	<i>3-PLANE</i>	SCAN RANGE		
	Series Description	<i>RN TO INJECT GLUCAGON</i>	FOV	<i>48.0</i>	
	SCAN TIMING		Slice Thickness	<i>8.0</i>	
	TE	<i>80.0</i>	Slice Spacing	<i>5.0</i>	
	Number of Echoes	<i>1</i>	ACQ TIMING		
	TR	<i>525.0</i>	Freq	<i>384</i>	
	Receiver Bandwidth	<i>83.33</i>	Phase	<i>160</i>	
	IMAGE ENHANCE		Freq DIR	<i>Unswap</i>	
	Filter Choice	<i>None</i>	# of Acq. Before Pause	<i>0</i>	
	GATING/TRIGGER		Phase FOV	<i>1.00</i>	
	Auto Trigger Type	<i>Off</i>	Auto Shim	<i>Auto</i>	
	FMRI		Phase Correction	<i>No</i>	
	PSD Trigger	<i>Internal</i>	USER CVS		
	View Order	<i>Bottom/Up</i>	User CV1	<i>1.00</i>	
	# of Repetitions REST	<i>0</i>	MULTI-PHASE		
	# of Repetitions ACTIVE	<i>0</i>	Seperate Series	<i>0</i>	
	SAT		Mask Phase	<i>0</i>	
	Tag Type	<i>None</i>	Mask Pause	<i>0</i>	
	TRICKS		DIFFUSION		
	Pause On/Off	<i>On</i>	Recon All Images	<i>On</i>	
Auto Subtract	<i>0</i>	CONTRAST			
Auto SCIC	<i>Off</i>	Contrast Yes/No	<i>No</i>		

Protocol: adult_abdomen_MR ENTEROGRAPHY

PATIENT POSITION	
Patient Entry	Feet First
Patient Position	Supine
Coil Configuration	Body
Plane	AXIAL
Series Description	Ax DWI 3:1 B-800-500-50

SCAN TIMING	
TE	Minimum
Number of Echoes	1
Number of Shots	1

IMAGE ENHANCE	
Filter Choice	None

GATING/TRIGGER	
Auto Trigger Type	Off
Resp. Trigger Window	30

FMRI	
PSD Trigger	Internal
View Order	Bottom/Up
# of Repetitions REST	0
# of Repetitions ACTIVE	0

SAT	
Tag Type	None
Fat/Water Saturation	Fat

TRICKS	
Pause On/Off	On
Auto Subtract	0
Auto SCIC	2

CONTRAST	
Contrast Yes/No	No

IMAGING PARAMETERS	
Imaging Mode	2D
Pulse Sequence	Spin Echo
Imaging Options	EDR, EPI, DIFF, Asset, Nav

SCAN RANGE	
FOV	40.0
Slice Thickness	7.0
Slice Spacing	1.0

ACQ TIMING	
Freq	80
Phase	128
Freq DIR	R/L
Phase FOV	1.00
Auto Shim	Auto
Phase Correction	Yes

USER CVS	
User CV0	1.00
User CV5	1.00
User CV17	1.00
User CV18	1.00

MULTI-PHASE	
Seperate Series	0
Mask Phase	0
Mask Pause	0

DIFFUSION	
Optimized TE	Yes
Diffusion Directions	64
Number of Diffusion Directions	1
Number of T2 Images	0
Dual Spin Echo	Off
Recon All Images	On

TRACKER	
Tracker Length	120.0
Tracker Thickness	20.0

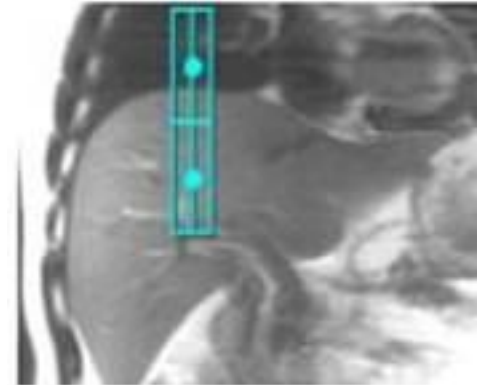
Ax DWI 3:1 B-800-500-50

Ax DWI 3:1 B-800-500-50

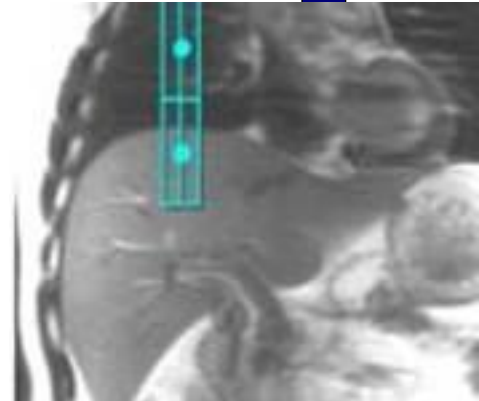
OTHERS

Protocol Notes

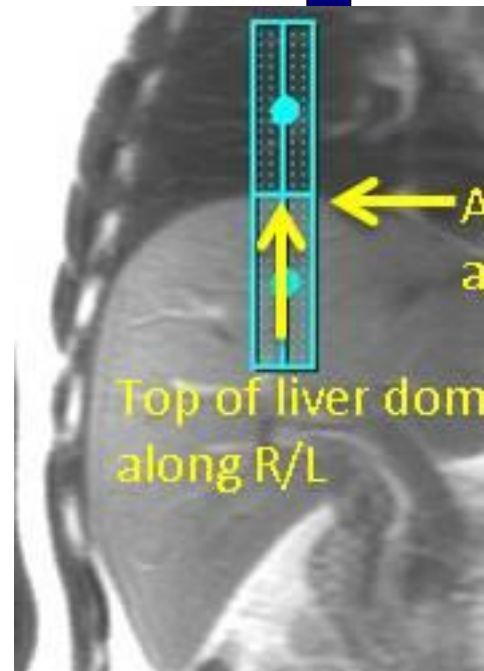
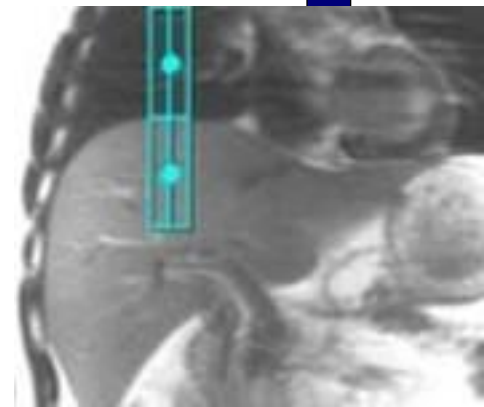
*Auto Tracker placement is turned on
Tracker will be placed automatically
Manual Placement
Instructions:
Navigator Tracker
Placement Considerations
* Place navigator tracker on a breath hold localizer for the optimum performance*
- Center of tracker should be 1.5 cm below diaphragm if localizer was acquired with expiration breath hold
- Center of tracker should be 1.5 cm above diaphragm if localizer was acquired with inspiration breath hold
- Center of tracker should be placed on the diaphragm if localizer was acquired free breathing
*Please review operator manual for additional information
Expiration-Breath Hold Tracker Placement*

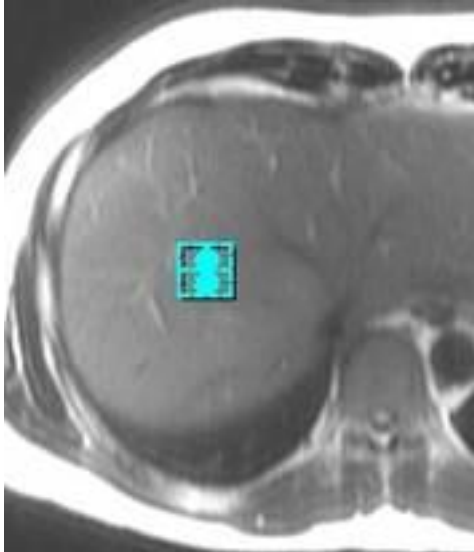
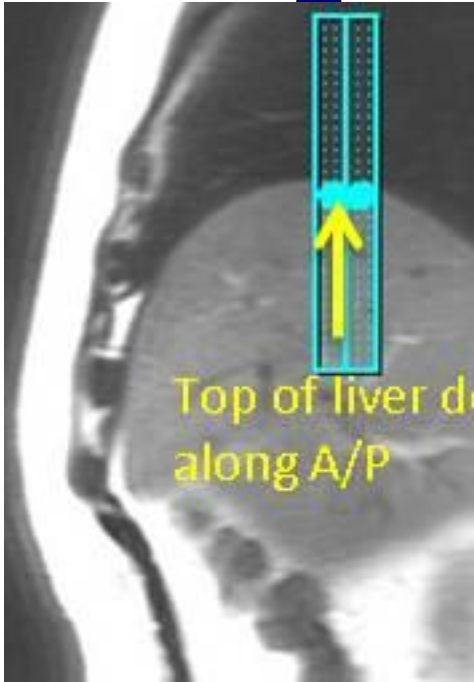


Inspiration-Breath Hold Tracker Placement

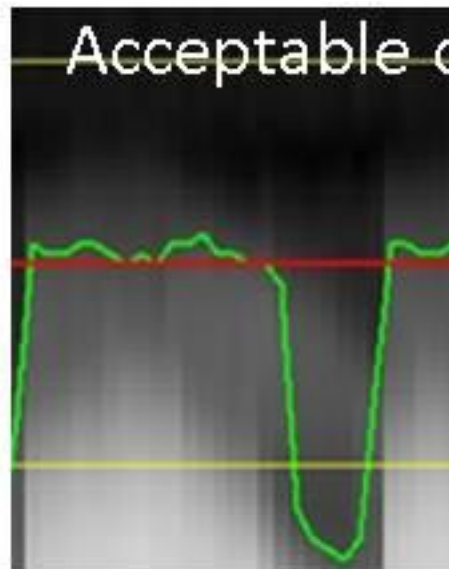


Free Breathing Tracker Placement





Easy Tro



-> No need to check anything since good waveform reflects respiratory status

McLeod Pavilion

Protocol: adult_abdomen_MR ENTEROGRAPHY

PATIENT POSITION		IMAGING PARAMETERS	
Patient Entry	<i>Feet First</i>	Imaging Mode	<i>2D</i>
Patient Position	<i>Supine</i>	Pulse Sequence	<i>Spin Echo</i>
Coil Configuration	<i>Body</i>	Imaging Options	<i>EDR, Fast, SS, Asset</i>
Plane	<i>OBLIQUE</i>	SCAN RANGE	
Series Description	<i>Cor SSFSE BH</i>	FOV	<i>40.0</i>
SCAN TIMING		Slice Thickness	<i>7.0</i>
TE	<i>90.0</i>	Slice Spacing	<i>1.0</i>
Number of Echoes	<i>1</i>	ACQ TIMING	
TR	<i>2095.6</i>	Freq	<i>360</i>
Receiver Bandwidth	<i>62.50</i>	Phase	<i>260</i>
IMAGE ENHANCE		Freq DIR	<i>S/I</i>
Filter Choice	<i>B</i>	NEX	<i>1.00</i>
GATING/TRIGGER		# of Acq. Before Pause	<i>12</i>
Auto Trigger Type	<i>Off</i>	Phase FOV	<i>1.00</i>
FMRI		Auto Shim	<i>Auto</i>
PSD Trigger	<i>Internal</i>	Phase Correction	<i>No</i>
View Order	<i>Bottom/Up</i>	USER CVS	
# of Repetitions REST	<i>0</i>	User CV1	<i>1.00</i>
# of Repetitions ACTIVE	<i>0</i>	User CV2	<i>184.00</i>
SAT		User CV13	<i>1.00</i>
Tag Type	<i>None</i>	User CV15	<i>1.00</i>
TRICKS		MULTI-PHASE	
Pause On/Off	<i>On</i>	Seperate Series	<i>0</i>
Auto Subtract	<i>0</i>	Mask Phase	<i>0</i>
Auto SCIC	<i>2</i>	Mask Pause	<i>0</i>
		DIFFUSION	
		Recon All Images	<i>On</i>
		CONTRAST	
		Contrast Yes/No	<i>No</i>

Cor SSFSE BH

Cor SSFSE BH

McLeod Pavilion

Protocol: adult_abdomen_MR ENTEROGRAPHY

PATIENT POSITION		IMAGING PARAMETERS	
Patient Entry	<i>Feet First</i>	Imaging Mode	<i>2D</i>
Patient Position	<i>Supine</i>	Pulse Sequence	<i>Spin Echo</i>
Coil Configuration	<i>Body</i>	Imaging Options	<i>EDR, Fast, ZIP512, SS, Assét</i>
Plane	<i>OBLIQUE</i>	SCAN RANGE	
Series Description	<i>Ax SSFSE BH</i>	FOV	<i>38.0</i>
SCAN TIMING		Slice Thickness	<i>7.0</i>
TE	<i>90.0</i>	Slice Spacing	<i>1.0</i>
Number of Echoes	<i>1</i>	ACQ TIMING	
TR	<i>1176.1</i>	Freq	<i>360</i>
Receiver Bandwidth	<i>62.50</i>	Phase	<i>260</i>
IMAGE ENHANCE		Freq DIR	<i>R/L</i>
Filter Choice	<i>B</i>	NEX	<i>1.00</i>
GATING/TRIGGER		# of Acq. Before Pause	<i>15</i>
Auto Trigger Type	<i>Off</i>	Phase FOV	<i>1.00</i>
FMRI		Auto Shim	<i>On</i>
PSD Trigger	<i>Internal</i>	Phase Correction	<i>No</i>
View Order	<i>Bottom/Up</i>	USER CVS	
# of Repetitions REST	<i>0</i>	User CV1	<i>1.00</i>
# of Repetitions ACTIVE	<i>0</i>	User CV2	<i>184.00</i>
SAT		User CV13	<i>1.00</i>
Tag Type	<i>None</i>	User CV15	<i>1.00</i>
TRICKS		MULTI-PHASE	
Pause On/Off	<i>On</i>	Seperate Series	<i>0</i>
Auto Subtract	<i>0</i>	Mask Phase	<i>0</i>
Auto SCIC	<i>2</i>	Mask Pause	<i>0</i>
		DIFFUSION	
		Recon All Images	<i>On</i>
		CONTRAST	
		Contrast Yes/No	<i>No</i>

Ax SSFSE BH

Ax SSFSE BH

Protocol: adult_abdomen_MR ENTEROGRAPHY

PATIENT POSITION		IMAGING PARAMETERS	
Patient Entry	Feet First	Imaging Mode	2D
Patient Position	Supine	Pulse Sequence	Spin Echo
Coil Configuration	Body	Imaging Options	EDR, Fast, SS, Asset, FR
Plane	OBLIQUE	SCAN RANGE	
Series Description	Ax SSFSE F/S BH	FOV	38.0
SCAN TIMING		Slice Thickness	7.0
TE	90.0	Slice Spacing	1.0
Number of Echoes	1	ACQ TIMING	
TR	1200.9	Freq	360
Receiver Bandwidth	62.50	Phase	260
IMAGE ENHANCE		Freq DIR	R/L
Filter Choice	B	NEX	1.00
GATING/TRIGGER		# of Acq. Before Pause	15
Auto Trigger Type	Off	Phase FOV	1.00
FMRI		Auto Shim	On
PSD Trigger	Internal	Phase Correction	No
View Order	Bottom/Up	USER CVS	
# of Repetitions REST	0	User CV1	1.00
# of Repetitions ACTIVE	0	User CV2	184.00
SAT		User CV13	1.00
Tag Type	None	User CV15	1.00
Fat/Water Saturation	Fat Classic	MULTI-PHASE	
TRICKS		Seperate Series	0
Pause On/Off	On	Mask Phase	0
Auto Subtract	0	Mask Pause	0
Auto SCIC	2	DIFFUSION	
		Recon All Images	On
		CONTRAST	
		Contrast Yes/No	No

Ax SSFSE F/S BH

Ax SSFSE F/S BH

McLeod Pavilion

Protocol: adult_abdomen_MR ENTEROGRAPHY

Ax FIESTA MULTIPHASEBH	PATIENT POSITION		IMAGING PARAMETERS	
	Patient Entry	<i>Feet First</i>	Imaging Mode	<i>2D</i>
	Patient Position	<i>Supine</i>	Pulse Sequence	<i>Fiesta</i>
	Coil Configuration	<i>Body</i>	Imaging Options	<i>Seq, EDR, Fast, MPh, ARC</i>
	Plane	<i>AXIAL</i>	SCAN RANGE	
	Series Description	<i>Ax FIESTA MULTIPHASEBH</i>	FOV	<i>40.0</i>
	SCAN TIMING		Slice Thickness	<i>7.0</i>
	Flip Angle	<i>50</i>	Slice Spacing	<i>1.0</i>
	TE	<i>Minimum</i>	ACQ TIMING	
	Number of Echoes	<i>1</i>	Freq	<i>192</i>
	TI	<i>210</i>	Phase	<i>192</i>
	Receiver Bandwidth	<i>125.00</i>	Freq DIR	<i>R/L</i>
	IMAGE ENHANCE		NEX	<i>1.00</i>
	Filter Choice	<i>None</i>	# of Acq. Before Pause	<i>0</i>
	GATING/TRIGGER		Phase FOV	<i>0.80</i>
	Auto Trigger Type	<i>Off</i>	Auto Shim	<i>Auto</i>
	MULTI-PHASE		Phase Correction	<i>No</i>
	Slice per Location	<i>10</i>	FMRI	
	Phase Acquisition Order	<i>Sequential</i>	PSD Trigger	<i>Internal</i>
	Delay after Acquisition	<i>Minimum</i>	View Order	<i>Bottom/Up</i>
Seperate Series	<i>0</i>	# of Repetitions REST	<i>0</i>	
Mask Phase	<i>0</i>	# of Repetitions ACTIVE	<i>0</i>	
Mask Pause	<i>0</i>	SAT		
DIFFUSION		Tag Type	<i>None</i>	
Recon All Images	<i>On</i>	Fat/Water Saturation	<i>Fat Special</i>	
CONTRAST		TRICKS		
Contrast Yes/No	<i>No</i>	Pause On/Off	<i>On</i>	
		Auto Subtract	<i>0</i>	
		Auto SCIC	<i>Off</i>	
		OTHERS		
		Protocol Notes	<i>Tip: - Place a shim volume over the liver to help reduce artifacts. - TI time for ASPIR (ChemSAT) can be modified by changing the Prep Time.</i>	

Ax FIESTA MULTIPHASEBH

McLeod Pavilion

Protocol: adult_abdomen_MR ENTEROGRAPHY

PATIENT POSITION		IMAGING PARAMETERS	
Patient Entry	<i>Feet First</i>	Imaging Mode	<i>2D</i>
Patient Position	<i>Supine</i>	Pulse Sequence	<i>Fiesta</i>
Coil Configuration	<i>Body</i>	Imaging Options	<i>Seq, EDR, Fast, MPh, ARC</i>
Plane	<i>OBLIQUE</i>	SCAN RANGE	
Series Description	<i>COR FIESTA MULTIPHASE BH</i>	FOV	<i>40.0</i>
SCAN TIMING		Slice Thickness	<i>8.0</i>
Flip Angle	<i>50</i>	Slice Spacing	<i>1.0</i>
TE	<i>Minimum</i>	ACQ TIMING	
Number of Echoes	<i>1</i>	Freq	<i>192</i>
TI	<i>210</i>	Phase	<i>192</i>
Receiver Bandwidth	<i>125.00</i>	Freq DIR	<i>Unswap</i>
IMAGE ENHANCE		NEX	<i>1.00</i>
Filter Choice	<i>None</i>	# of Acq. Before Pause	<i>0</i>
GATING/TRIGGER		Phase FOV	<i>0.80</i>
Auto Trigger Type	<i>Off</i>	Auto Shim	<i>Auto</i>
MULTI-PHASE		Phase Correction	<i>No</i>
Slice per Location	<i>10</i>	FMRI	
Phase Acquisition Order	<i>Sequential</i>	PSD Trigger	<i>Internal</i>
Delay after Acquisition	<i>Minimum</i>	View Order	<i>Bottom/Up</i>
Seperate Series	<i>0</i>	# of Repetitions REST	<i>0</i>
Mask Phase	<i>0</i>	# of Repetitions ACTIVE	<i>0</i>
Mask Pause	<i>0</i>	SAT	
DIFFUSION		Tag Type	<i>None</i>
Recon All Images	<i>On</i>	Fat/Water Saturation	<i>Fat Special</i>
CONTRAST		TRICKS	
Contrast Yes/No	<i>No</i>	Pause On/Off	<i>On</i>
		Auto Subtract	<i>0</i>
		Auto SCIC	<i>Off</i>
		OTHERS	
		Protocol Notes	<i>Tip:</i> <i>- Place a shim volume over the liver to help reduce artifacts.</i> <i>-TI time for ASPIR (ChemSAT) can be modified by changing the Prep Time.</i>

COR FIESTA MULTIPHASE BH

COR FIESTA MULTIPHASE BH

Protocol: adult_abdomen_MR ENTEROGRAPHY

RN TO INJECT GLUCAGON	PATIENT POSITION		IMAGING PARAMETERS		RN TO INJECT GLUCAGON
	Patient Entry	<i>Feet First</i>	Imaging Mode	<i>2D</i>	
	Patient Position	<i>Supine</i>	Pulse Sequence	<i>Spin Echo</i>	
	Coil Configuration	<i>Body</i>	Imaging Options	<i>Seq, EDR, TRF, Fast, SS, FR, ARC</i>	
	Plane	<i>3-PLANE</i>	SCAN RANGE		
	Series Description	<i>RN TO INJECT GLUCAGON</i>	FOV	<i>48.0</i>	
	SCAN TIMING		Slice Thickness	<i>8.0</i>	
	TE	<i>80.0</i>	Slice Spacing	<i>5.0</i>	
	Number of Echoes	<i>1</i>	ACQ TIMING		
	TR	<i>525.0</i>	Freq	<i>384</i>	
	Receiver Bandwidth	<i>83.33</i>	Phase	<i>160</i>	
	IMAGE ENHANCE		Freq DIR	<i>Unswap</i>	
	Filter Choice	<i>None</i>	# of Acq. Before Pause	<i>0</i>	
	GATING/TRIGGER		Phase FOV	<i>1.00</i>	
	Auto Trigger Type	<i>Off</i>	Auto Shim	<i>Auto</i>	
	FMRI		Phase Correction	<i>No</i>	
	PSD Trigger	<i>Internal</i>	USER CVS		
	View Order	<i>Bottom/Up</i>	User CV1	<i>1.00</i>	
	# of Repetitions REST	<i>0</i>	MULTI-PHASE		
	# of Repetitions ACTIVE	<i>0</i>	Seperate Series	<i>0</i>	
SAT		Mask Phase	<i>0</i>		
Tag Type	<i>None</i>	Mask Pause	<i>0</i>		
TRICKS		DIFFUSION			
Pause On/Off	<i>On</i>	Recon All Images	<i>On</i>		
Auto Subtract	<i>0</i>	CONTRAST			
Auto SCIC	<i>Off</i>	Contrast Yes/No	<i>No</i>		

McLeod Pavilion

Protocol: adult_abdomen_MR ENTEROGRAPHY

PATIENT POSITION		IMAGING PARAMETERS	
Patient Entry	<i>Feet First</i>	Imaging Mode	<i>3D</i>
Patient Position	<i>Supine</i>	Pulse Sequence	<i>LAVA</i>
Coil Configuration	<i>Body</i>	Imaging Options	<i>EDR, Fast, ZIP2, ARC, Flex</i>
Plane	<i>CORONAL</i>	IDEAL	<i>3</i>
Series Description	<i>3D Cor LAVA Flex BH</i>	SCAN RANGE	
SCAN TIMING		FOV	<i>44.0</i>
Flip Angle	<i>10</i>	Slice Thickness	<i>4.4</i>
TE	<i>Minimum</i>	Location per Slab	<i>56</i>
Number of Echoes	<i>2</i>	Overlap Locations	<i>0</i>
Receiver Bandwidth	<i>142.86</i>	ACQ TIMING	
IMAGE ENHANCE		Freq	<i>300</i>
Filter Choice	<i>A</i>	Phase	<i>200</i>
GATING/TRIGGER		Freq DIR	<i>S/I</i>
Auto Trigger Type	<i>Off</i>	NEX	<i>1.00</i>
FMRI		Phase FOV	<i>1.00</i>
PSD Trigger	<i>Internal</i>	Auto Shim	<i>Auto</i>
View Order	<i>Bottom/Up</i>	Phase Correction	<i>No</i>
# of Repetitions REST	<i>0</i>	USER CVS	
# of Repetitions ACTIVE	<i>0</i>	User CV4	<i>6.60</i>
SAT		User CV6	<i>1.00</i>
Tag Type	<i>None</i>	MULTI-PHASE	
TRICKS		Seperate Series	<i>0</i>
Pause On/Off	<i>On</i>	Trigger Delay without AV	<i>6.6</i>
Auto Subtract	<i>0</i>	Mask Phase	<i>0</i>
Auto SCIC	<i>2</i>	Mask Pause	<i>0</i>
		DIFFUSION	
		Recon All Images	<i>On</i>
		CONTRAST	
		Contrast Yes/No	<i>No</i>

3D Cor LAVA Flex BH

3D Cor LAVA Flex BH

Protocol: adult_abdomen_MR ENTEROGRAPHY

3D Ax LAVA Flex Pre/AV	PATIENT POSITION		IMAGING PARAMETERS	
	Patient Entry	<i>Feet First</i>	Imaging Mode	<i>3D</i>
	Patient Position	<i>Supine</i>	Pulse Sequence	<i>LAVA</i>
	Coil Configuration	<i>Body</i>	Imaging Options	<i>EDR, Fast, ZIP2, MPhVar, ARC, Flex</i>
	Plane	<i>AXIAL</i>	IDEAL	<i>15</i>
	Series Description	<i>3D Ax LAVA Flex Pre/AV</i>	SCAN RANGE	
	SCAN TIMING		FOV	<i>42.0</i>
	Flip Angle	<i>10</i>	Slice Thickness	<i>4.4</i>
	TE	<i>Minimum</i>	Location per Slab	<i>56</i>
	Number of Echoes	<i>2</i>	Overlap Locations	<i>0</i>
	Receiver Bandwidth	<i>142.86</i>	ACQ TIMING	
	IMAGE ENHANCE		Freq	<i>300</i>
	Filter Choice	<i>A</i>	Phase	<i>200</i>
	GATING/TRIGGER		Freq DIR	<i>R/L</i>
	Auto Trigger Type	<i>Off</i>	NEX	<i>1.00</i>
	FMRI		Phase FOV	<i>1.10</i>
	PSD Trigger	<i>Internal</i>	Auto Shim	<i>Auto</i>
	View Order	<i>Bottom/Up</i>	Phase Correction	<i>No</i>
	# of Repetitions REST	<i>0</i>	USER CVS	
	# of Repetitions ACTIVE	<i>0</i>	User CV6	<i>1.00</i>
SAT		MULTI-PHASE		
Tag Type	<i>None</i>	# of Phases	<i>3</i>	
TRICKS		Seperate Series	<i>1</i>	
Pause On/Off	<i>On</i>	Trigger Delay without AV	<i>6</i>	
Auto Subtract	<i>4099</i>	Mask Phase	<i>1</i>	
Auto SCIC	<i>2</i>	Mask Pause	<i>1</i>	
		DIFFUSION		
		Recon All Images	<i>On</i>	
		CONTRAST		
		Contrast Yes/No	<i>No</i>	

3D Ax LAVA Flex Pre/AV

Protocol: adult_abdomen_MR ENTEROGRAPHY

3D Ax LAVA Flex 20 SEC	PATIENT POSITION		IMAGING PARAMETERS		3D Ax LAVA Flex 20 SEC
	Patient Entry	<i>Feet First</i>	Imaging Mode	<i>3D</i>	
	Patient Position	<i>Supine</i>	Pulse Sequence	<i>LAVA</i>	
	Coil Configuration	<i>Body</i>	Imaging Options	<i>EDR, Fast, ZIP2, ARC, Flex</i>	
	Plane	<i>CORONAL</i>	IDEAL	<i>3</i>	
	Series Description	<i>3D Ax LAVA Flex 20 SEC</i>	SCAN RANGE		
	SCAN TIMING		FOV	<i>42.0</i>	
	Flip Angle	<i>10</i>	Slice Thickness	<i>4.4</i>	
	TE	<i>Minimum</i>	Location per Slab	<i>56</i>	
	Number of Echoes	<i>2</i>	Overlap Locations	<i>0</i>	
	Receiver Bandwidth	<i>142.86</i>	ACQ TIMING		
	IMAGE ENHANCE		Freq	<i>300</i>	
	Filter Choice	<i>A</i>	Phase	<i>200</i>	
	GATING/TRIGGER		Freq DIR	<i>S/I</i>	
	Auto Trigger Type	<i>Off</i>	NEX	<i>1.00</i>	
	FMRI		Phase FOV	<i>1.10</i>	
	PSD Trigger	<i>Internal</i>	Auto Shim	<i>Auto</i>	
	View Order	<i>Bottom/Up</i>	Phase Correction	<i>No</i>	
	# of Repetitions REST	<i>0</i>	USER CVS		
	# of Repetitions ACTIVE	<i>0</i>	User CV4	<i>6.60</i>	
SAT		User CV6	<i>1.00</i>		
Tag Type	<i>None</i>	MULTI-PHASE			
TRICKS		Seperate Series	<i>0</i>		
Pause On/Off	<i>On</i>	Trigger Delay without AV	<i>6.6</i>		
Auto Subtract	<i>0</i>	Mask Phase	<i>0</i>		
Auto SCIC	<i>2</i>	Mask Pause	<i>0</i>		
		DIFFUSION			
		Recon All Images	<i>On</i>		
		CONTRAST			
		Contrast Yes/No	<i>No</i>		

Protocol: adult_abdomen_MR ENTEROGRAPHY

3D Ax LAVA Flex 60SEC	PATIENT POSITION		IMAGING PARAMETERS		3D Ax LAVA Flex 60SEC
	Patient Entry	<i>Feet First</i>	Imaging Mode	<i>3D</i>	
	Patient Position	<i>Supine</i>	Pulse Sequence	<i>LAVA</i>	
	Coil Configuration	<i>Body</i>	Imaging Options	<i>EDR, Fast, ZIP2, ARC, Flex</i>	
	Plane	<i>AXIAL</i>	IDEAL	<i>3</i>	
	Series Description	<i>3D Ax LAVA Flex 60SEC</i>	SCAN RANGE		
	SCAN TIMING		FOV	<i>42.0</i>	
	Flip Angle	<i>10</i>	Slice Thickness	<i>4.4</i>	
	TE	<i>Minimum</i>	Location per Slab	<i>56</i>	
	Number of Echoes	<i>2</i>	Overlap Locations	<i>0</i>	
	Receiver Bandwidth	<i>142.86</i>	ACQ TIMING		
	IMAGE ENHANCE		Freq	<i>300</i>	
	Filter Choice	<i>A</i>	Phase	<i>200</i>	
	GATING/TRIGGER		Freq DIR	<i>R/L</i>	
	Auto Trigger Type	<i>Off</i>	NEX	<i>1.00</i>	
	FMRI		Phase FOV	<i>1.10</i>	
	PSD Trigger	<i>Internal</i>	Auto Shim	<i>Auto</i>	
	View Order	<i>Bottom/Up</i>	Phase Correction	<i>No</i>	
	# of Repetitions REST	<i>0</i>	USER CVS		
	# of Repetitions ACTIVE	<i>0</i>	User CV4	<i>6.60</i>	
	SAT		User CV6	<i>1.00</i>	
	Tag Type	<i>None</i>	MULTI-PHASE		
	TRICKS		Seperate Series	<i>0</i>	
	Pause On/Off	<i>On</i>	Trigger Delay without AV	<i>6.6</i>	
	Auto Subtract	<i>0</i>	Mask Phase	<i>0</i>	
Auto SCIC	<i>2</i>	Mask Pause	<i>0</i>		
		DIFFUSION			
		Recon All Images	<i>On</i>		
		CONTRAST			
		Contrast Yes/No	<i>No</i>		

Protocol: adult_abdomen_MR ENTEROGRAPHY

3D Ax LAVA Flex 2 MIN	PATIENT POSITION		IMAGING PARAMETERS		3D Ax LAVA Flex 2 MIN
	Patient Entry	<i>Feet First</i>	Imaging Mode	<i>3D</i>	
	Patient Position	<i>Supine</i>	Pulse Sequence	<i>LAVA</i>	
	Coil Configuration	<i>Body</i>	Imaging Options	<i>EDR, Fast, ZIP2, ARC, Flex</i>	
	Plane	<i>AXIAL</i>	IDEAL	<i>3</i>	
	Series Description	<i>3D Ax LAVA Flex 2 MIN</i>	SCAN RANGE		
	SCAN TIMING		FOV	<i>42.0</i>	
	Flip Angle	<i>10</i>	Slice Thickness	<i>4.4</i>	
	TE	<i>Minimum</i>	Location per Slab	<i>56</i>	
	Number of Echoes	<i>2</i>	Overlap Locations	<i>0</i>	
	Receiver Bandwidth	<i>142.86</i>	ACQ TIMING		
	IMAGE ENHANCE		Freq	<i>300</i>	
	Filter Choice	<i>A</i>	Phase	<i>200</i>	
	GATING/TRIGGER		Freq DIR	<i>R/L</i>	
	Auto Trigger Type	<i>Off</i>	NEX	<i>1.00</i>	
	FMRI		Phase FOV	<i>1.10</i>	
	PSD Trigger	<i>Internal</i>	Auto Shim	<i>Auto</i>	
	View Order	<i>Bottom/Up</i>	Phase Correction	<i>No</i>	
	# of Repetitions REST	<i>0</i>	USER CVS		
	# of Repetitions ACTIVE	<i>0</i>	User CV4	<i>6.60</i>	
	SAT		User CV6	<i>1.00</i>	
	Tag Type	<i>None</i>	MULTI-PHASE		
	TRICKS		Seperate Series	<i>0</i>	
	Pause On/Off	<i>On</i>	Trigger Delay without AV	<i>6.6</i>	
	Auto Subtract	<i>0</i>	Mask Phase	<i>0</i>	
Auto SCIC	<i>2</i>	Mask Pause	<i>0</i>		
		DIFFUSION			
		Recon All Images	<i>On</i>		
		CONTRAST			
		Contrast Yes/No	<i>No</i>		

Protocol: adult_abdomen_MR ENTEROGRAPHY

PATIENT POSITION		IMAGING PARAMETERS	
Patient Entry	<i>Feet First</i>	Imaging Mode	<i>3D</i>
Patient Position	<i>Supine</i>	Pulse Sequence	<i>LAVA</i>
Coil Configuration	<i>Body</i>	Imaging Options	<i>EDR, Fast, ZIP2, ARC, Flex</i>
Plane	<i>CORONAL</i>	IDEAL	<i>3</i>
Series Description	<i>3D Cor LAVA POST BH</i>	SCAN RANGE	
SCAN TIMING		FOV	<i>44.0</i>
Flip Angle	<i>10</i>	Slice Thickness	<i>4.4</i>
TE	<i>Minimum</i>	Location per Slab	<i>56</i>
Number of Echoes	<i>2</i>	Overlap Locations	<i>0</i>
Receiver Bandwidth	<i>142.86</i>	ACQ TIMING	
IMAGE ENHANCE		Freq	<i>300</i>
Filter Choice	<i>A</i>	Phase	<i>200</i>
GATING/TRIGGER		Freq DIR	<i>S/I</i>
Auto Trigger Type	<i>Off</i>	NEX	<i>1.00</i>
FMRI		Phase FOV	<i>1.00</i>
PSD Trigger	<i>Internal</i>	Auto Shim	<i>Auto</i>
View Order	<i>Bottom/Up</i>	Phase Correction	<i>No</i>
# of Repetitions REST	<i>0</i>	USER CVS	
# of Repetitions ACTIVE	<i>0</i>	User CV4	<i>6.60</i>
SAT		User CV6	<i>1.00</i>
Tag Type	<i>None</i>	MULTI-PHASE	
TRICKS		Seperate Series	<i>0</i>
Pause On/Off	<i>On</i>	Trigger Delay without AV	<i>6.6</i>
Auto Subtract	<i>0</i>	Mask Phase	<i>0</i>
Auto SCIC	<i>2</i>	Mask Pause	<i>0</i>
		DIFFUSION	
		Recon All Images	<i>On</i>
		CONTRAST	
		Contrast Yes/No	<i>No</i>

3D Cor LAVA POST BH

3D Cor LAVA POST BH