

McLeod Pavilion


Protocol: adult_chest_CARDIAC Cyst

PATIENT POSITION		IMAGING PARAMETERS	
Patient Entry	<i>Feet First</i>	Imaging Mode	<i>2D</i>
Patient Position	<i>Supine</i>	Pulse Sequence	<i>Fiesta</i>
Coil Configuration	<i>Body</i>	Imaging Options	<i>Seq, Fast</i>
Plane	<i>3-PLANE</i>	SCAN RANGE	
Series Description	<i>3Plane Loc FIESTA</i>	FOV	<i>48.0</i>
SCAN TIMING		Slice Thickness	<i>10.0</i>
Flip Angle	<i>45</i>	Slice Spacing	<i>5.0</i>
TE	<i>Minimum</i>	ACQ TIMING	
Number of Echoes	<i>1</i>	Freq	<i>160</i>
Receiver Bandwidth	<i>100.00</i>	Phase	<i>140</i>
IMAGE ENHANCE		Freq DIR	<i>Unswap</i>
Filter Choice	<i>None</i>	NEX	<i>1.00</i>
GATING/TRIGGER		# of Acq. Before Pause	<i>0</i>
Auto Trigger Type	<i>Off</i>	Phase FOV	<i>1.00</i>
MULTI-PHASE		Auto Shim	<i>Auto</i>
Seperate Series	<i>0</i>	Phase Correction	<i>No</i>
Mask Phase	<i>0</i>	FMRI	
Mask Pause	<i>0</i>	PSD Trigger	<i>Internal</i>
DIFFUSION		View Order	<i>Bottom/Up</i>
Recon All Images	<i>On</i>	# of Repetitions REST	<i>0</i>
CONTRAST		# of Repetitions ACTIVE	<i>0</i>
Contrast Yes/No	<i>No</i>	SAT	
		Tag Type	<i>None</i>
		TRICKS	
		Pause On/Off	<i>On</i>
		Auto Subtract	<i>0</i>
		Auto SCIC	<i>Off</i>
		OTHERS	
		Protocol Notes	<i>USE LARGE AA COIL AND USE BODY 36 2</i>

3Plane Loc FIESTA

3Plane Loc FIESTA

Protocol: adult_chest_CARDIAC Cyst

PATIENT POSITION		IMAGING PARAMETERS	
Patient Entry	<i>Feet First</i>	Imaging Mode	<i>2D</i>
Patient Position	<i>Supine</i>	Pulse Sequence	<i>Fiesta</i>
Coil Configuration	<i>Body</i>	Imaging Options	<i>Seq, EDR, Fast, ZIP512, Asset</i>
Plane	<i>AXIAL</i>	SCAN RANGE	
Series Description	<i>Ax FIESTA BH Loc</i>	FOV	<i>36.0</i>
SCAN TIMING		Slice Thickness	<i>8.0</i>
Flip Angle	<i>45</i>	Slice Spacing	<i>0.0</i>
TE	<i>Min Full</i>	ACQ TIMING	
Number of Echoes	<i>1</i>	Freq	<i>132</i>
Receiver Bandwidth	<i>100.00</i>	Phase	<i>132</i>
IMAGE ENHANCE		Freq DIR	<i>R/L</i>
Filter Choice	<i>A</i>	NEX	<i>1.00</i>
GATING/TRIGGER		# of Acq. Before Pause	<i>0</i>
Auto Trigger Type	<i>Off</i>	Phase FOV	<i>1.00</i>
FMRI		Auto Shim	<i>Auto</i>
PSD Trigger	<i>Internal</i>	Phase Correction	<i>No</i>
View Order	<i>Bottom/Up</i>	USER CVS	
# of Repetitions REST	<i>0</i>	User CV20	<i>1.00</i>
# of Repetitions ACTIVE	<i>0</i>	MULTI-PHASE	
SAT		Seperate Series	<i>0</i>
Tag Type	<i>None</i>	Mask Phase	<i>0</i>
TRICKS		Mask Pause	<i>0</i>
Pause On/Off	<i>On</i>	DIFFUSION	
Auto Subtract	<i>0</i>	Optimized TE	<i>Yes</i>
Auto SCIC	<i>2</i>	Recon All Images	<i>On</i>
OTHERS		CONTRAST	
Protocol Notes	<i>cover above the arch to below heart</i>	Contrast Yes/No	<i>No</i>
			
TAKE OFF AUTO CAL			

Ax FIESTA BH Loc

Ax FIESTA BH Loc

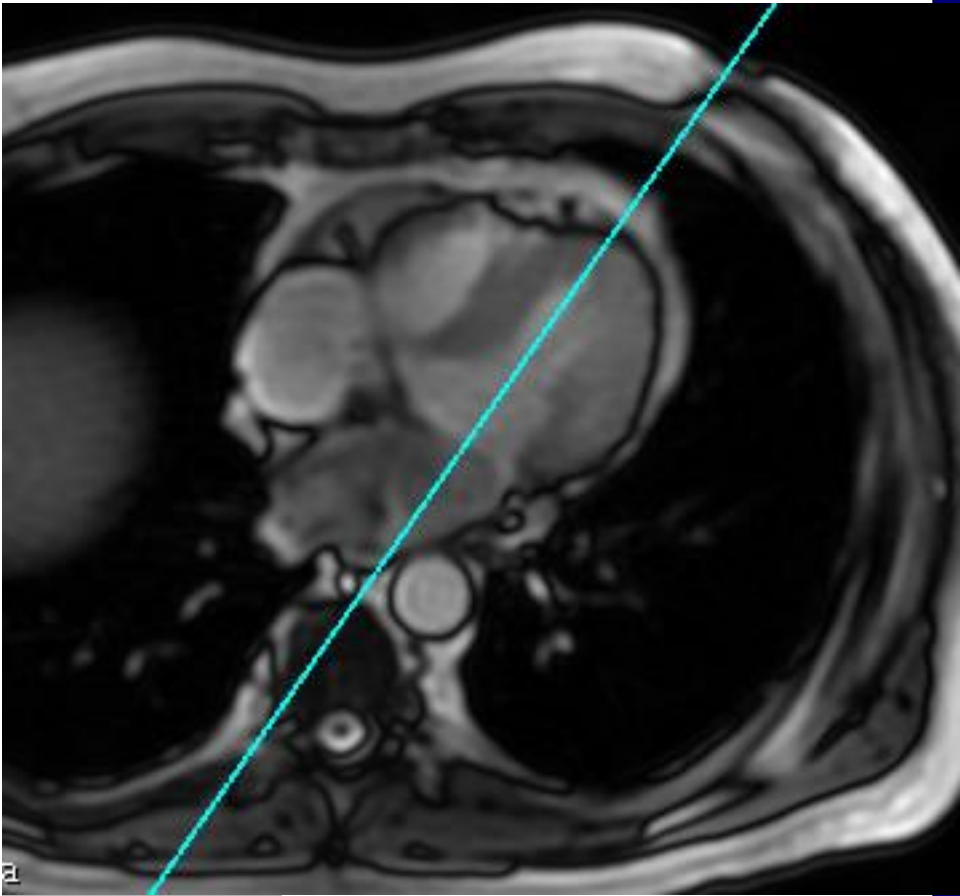
Protocol: adult_chest_CARDIAC Cyst

PATIENT POSITION		IMAGING PARAMETERS	
Patient Entry	<i>Feet First</i>	Imaging Mode	<i>2D</i>
Patient Position	<i>Supine</i>	Pulse Sequence	<i>Fiesta</i>
Coil Configuration	<i>Body</i>	Imaging Options	<i>Gat, Seq, EDR, Fast, Asset</i>
Plane	<i>OBLIQUE</i>	SCAN RANGE	
Series Description	<i>2Ch LOC BH</i>	FOV	<i>41.0</i>
SCAN TIMING		Slice Thickness	<i>8.0</i>
Flip Angle	<i>50</i>	Slice Spacing	<i>0.0</i>
TE	<i>Minimum</i>	ACQ TIMING	
Number of Echoes	<i>1</i>	Freq	<i>192</i>
Receiver Bandwidth	<i>100.00</i>	Phase	<i>224</i>
IMAGE ENHANCE		Freq DIR	<i>S/I</i>
Filter Choice	<i>None</i>	NEX	<i>1.00</i>
GATING/TRIGGER		Phase FOV	<i>1.00</i>
Auto Trigger Type	<i>Off</i>	Auto Shim	<i>On</i>
Trigger Type	<i>1</i>	Phase Correction	<i>No</i>
Views per Segment	<i>20</i>	FMRI	
MULTI-PHASE		PSD Trigger	<i>Internal</i>
Seperate Series	<i>0</i>	Slice Order	<i>Interleaved</i>
Mask Phase	<i>0</i>	View Order	<i>Bottom/Up</i>
Mask Pause	<i>0</i>	# of Repetitions REST	<i>0</i>
DIFFUSION		# of Repetitions ACTIVE	<i>0</i>
Recon All Images	<i>On</i>	SAT	
CINE		Tag Type	<i>None</i>
# of Cardiac Phases to Reconstruct	<i>20</i>	TRICKS	
		Pause On/Off	<i>On</i>
		Auto Subtract	<i>0</i>
		Auto SCIC	<i>Off</i>
		CONTRAST	
		Contrast Yes/No	<i>No</i>

2Ch LOC BH

2Ch LOC BH

OTHERS
Protocol Notes



2 CHAMBER LOC
PRESCRIPTION

Protocol: adult_chest_CARDIAC Cyst

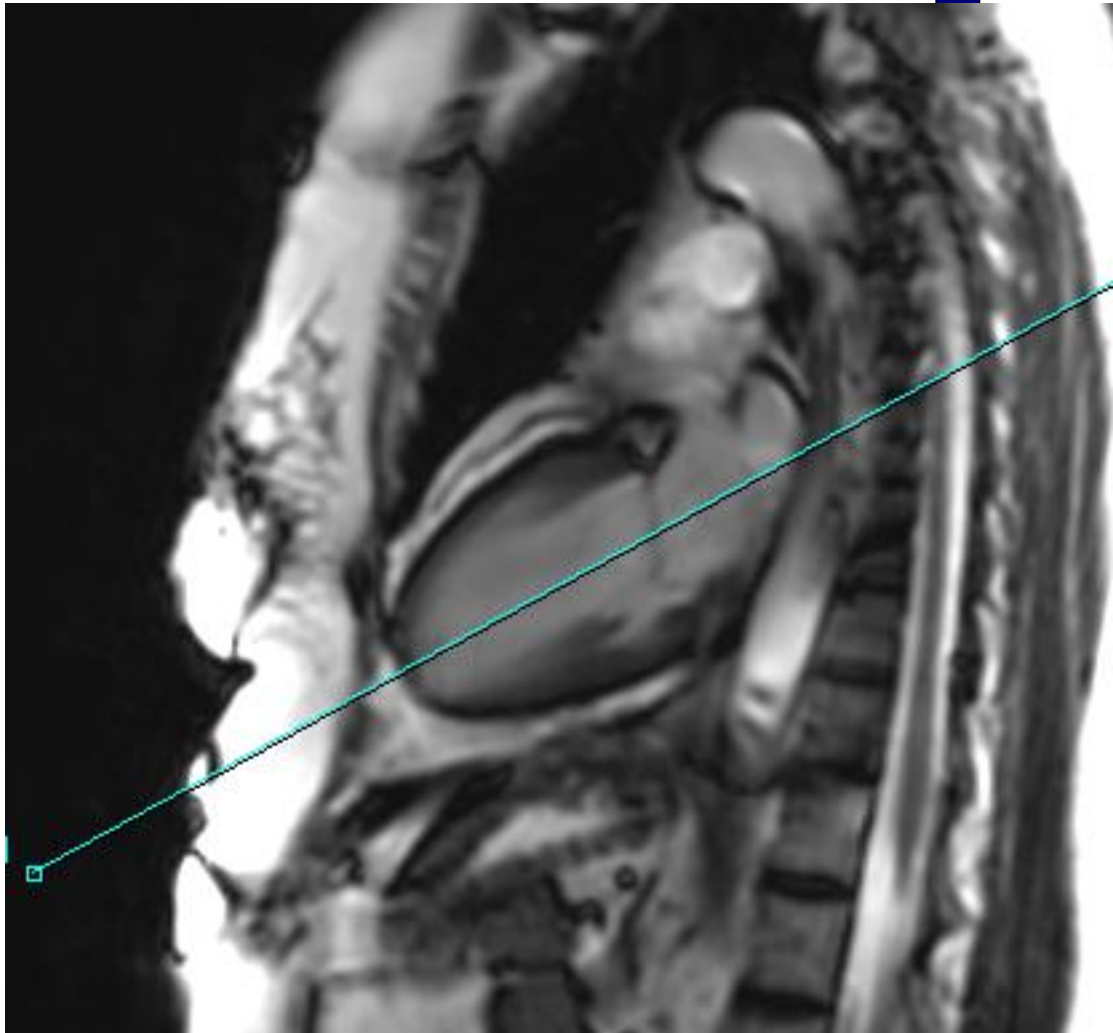
PATIENT POSITION		IMAGING PARAMETERS	
Patient Entry	<i>Feet First</i>	Imaging Mode	<i>2D</i>
Patient Position	<i>Supine</i>	Pulse Sequence	<i>Fiesta</i>
Coil Configuration	<i>Body</i>	Imaging Options	<i>Gat, Seq, EDR, Fast, Asset</i>
Plane	<i>OBLIQUE</i>	SCAN RANGE	
Series Description	<i>SEMI 4CH LOC BH</i>	FOV	<i>41.0</i>
SCAN TIMING		Slice Thickness	<i>7.0</i>
Flip Angle	<i>50</i>	Slice Spacing	<i>0.0</i>
TE	<i>Minimum</i>	ACQ TIMING	
Number of Echoes	<i>1</i>	Freq	<i>192</i>
Receiver Bandwidth	<i>100.00</i>	Phase	<i>224</i>
IMAGE ENHANCE		Freq DIR	<i>R/L</i>
Filter Choice	<i>None</i>	NEX	<i>1.00</i>
GATING/TRIGGER		Phase FOV	<i>0.90</i>
Auto Trigger Type	<i>Off</i>	Auto Shim	<i>On</i>
Trigger Type	<i>1</i>	Phase Correction	<i>No</i>
Views per Segment	<i>20</i>	FMRI	
MULTI-PHASE		PSD Trigger	<i>Internal</i>
Seperate Series	<i>0</i>	View Order	<i>Bottom/Up</i>
Mask Phase	<i>0</i>	# of Repetitions REST	<i>0</i>
Mask Pause	<i>0</i>	# of Repetitions ACTIVE	<i>0</i>
DIFFUSION		SAT	
Recon All Images	<i>On</i>	Tag Type	<i>None</i>
CINE		TRICKS	
# of Cardiac Phases to Reconstruct	<i>20</i>	Pause On/Off	<i>On</i>
		Auto Subtract	<i>0</i>
		Auto SCIC	<i>Off</i>
		CONTRAST	
		Contrast Yes/No	<i>No</i>

SEMI 4CH LOC BH

SEMI 4CH LOC BH

OTHERS

Protocol Notes



McLeod Pavilion

Protocol: adult_chest_CARDIAC Cyst

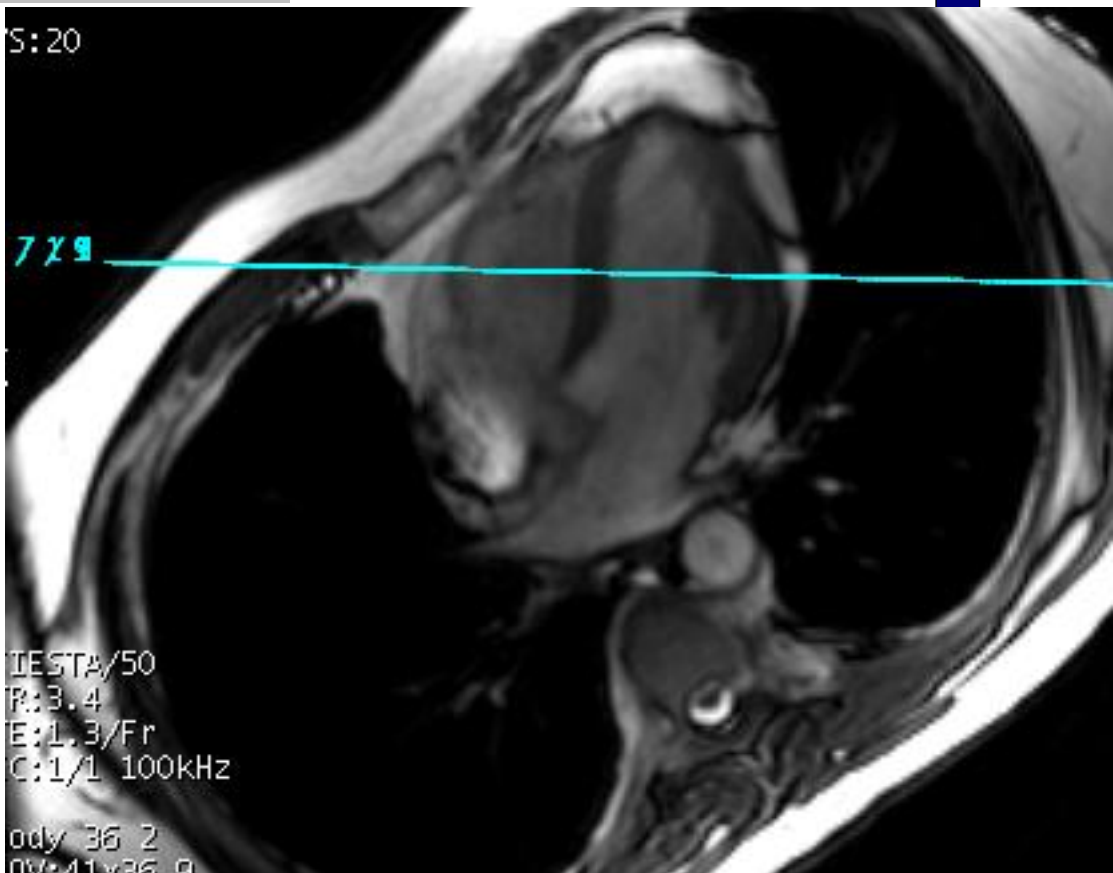
PATIENT POSITION		IMAGING PARAMETERS	
Patient Entry	<i>Feet First</i>	Imaging Mode	<i>2D</i>
Patient Position	<i>Supine</i>	Pulse Sequence	<i>Fiesta</i>
Coil Configuration	<i>Body</i>	Imaging Options	<i>Gat, Seq, EDR, Fast, Asset</i>
Plane	<i>OBLIQUE</i>	SCAN RANGE	
Series Description	<i>SA LOC BH</i>	FOV	<i>41.0</i>
SCAN TIMING		Slice Thickness	<i>8.0</i>
Flip Angle	<i>50</i>	Slice Spacing	<i>0.0</i>
TE	<i>Minimum</i>	ACQ TIMING	
Number of Echoes	<i>1</i>	Freq	<i>160</i>
Receiver Bandwidth	<i>100.00</i>	Phase	<i>160</i>
IMAGE ENHANCE		Freq DIR	<i>S/I</i>
Filter Choice	<i>None</i>	NEX	<i>1.00</i>
GATING/TRIGGER		Phase FOV	<i>0.80</i>
Auto Trigger Type	<i>Off</i>	Auto Shim	<i>On</i>
Trigger Type	<i>1</i>	Phase Correction	<i>No</i>
Views per Segment	<i>20</i>	FMRI	
MULTI-PHASE		PSD Trigger	<i>Internal</i>
Seperate Series	<i>0</i>	Slice Order	<i>Interleaved</i>
Mask Phase	<i>0</i>	View Order	<i>Bottom/Up</i>
Mask Pause	<i>0</i>	# of Repetitions REST	<i>0</i>
DIFFUSION		# of Repetitions ACTIVE	<i>0</i>
Recon All Images	<i>On</i>	SAT	
CINE		Tag Type	<i>None</i>
# of Cardiac Phases to Reconstruct	<i>20</i>	TRICKS	
		Pause On/Off	<i>On</i>
		Auto Subtract	<i>0</i>
		Auto SCIC	<i>Off</i>
		CONTRAST	
		Contrast Yes/No	<i>No</i>

SA LOC BH

SA LOC BH

OTHERS

Protocol Notes



RX SLICE OFF OF PEAK
DIASTOLIC

Protocol: adult_chest_CARDIAC Cyst

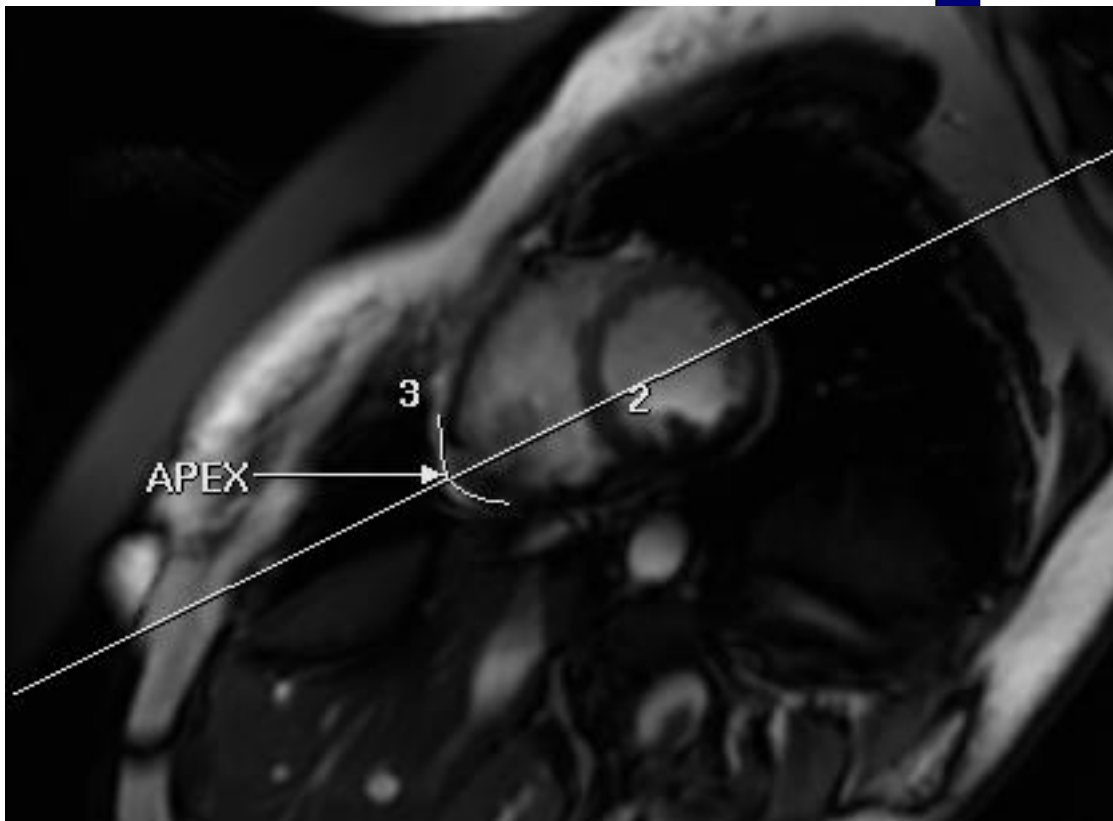
PATIENT POSITION		IMAGING PARAMETERS	
Patient Entry	<i>Feet First</i>	Imaging Mode	<i>2D</i>
Patient Position	<i>Supine</i>	Pulse Sequence	<i>Fiesta</i>
Coil Configuration	<i>Body</i>	Imaging Options	<i>Gat, Seq, EDR, Fast, Asset</i>
Plane	<i>OBLIQUE</i>	SCAN RANGE	
Series Description	<i>4CH LOC BH</i>	FOV	<i>41.0</i>
SCAN TIMING		Slice Thickness	<i>7.0</i>
Flip Angle	<i>50</i>	Slice Spacing	<i>0.0</i>
TE	<i>Minimum</i>	ACQ TIMING	
Number of Echoes	<i>1</i>	Freq	<i>192</i>
Receiver Bandwidth	<i>100.00</i>	Phase	<i>224</i>
IMAGE ENHANCE		Freq DIR	<i>R/L</i>
Filter Choice	<i>None</i>	NEX	<i>1.00</i>
GATING/TRIGGER		Phase FOV	<i>0.90</i>
Auto Trigger Type	<i>Off</i>	Auto Shim	<i>On</i>
Trigger Type	<i>1</i>	Phase Correction	<i>No</i>
Views per Segment	<i>20</i>	FMRI	
MULTI-PHASE		PSD Trigger	<i>Internal</i>
Seperate Series	<i>0</i>	View Order	<i>Bottom/Up</i>
Mask Phase	<i>0</i>	# of Repetitions REST	<i>0</i>
Mask Pause	<i>0</i>	# of Repetitions ACTIVE	<i>0</i>
DIFFUSION		SAT	
Recon All Images	<i>On</i>	Tag Type	<i>None</i>
CINE		TRICKS	
# of Cardiac Phases to Reconstruct	<i>20</i>	Pause On/Off	<i>On</i>
		Auto Subtract	<i>0</i>
		Auto SCIC	<i>Off</i>
		CONTRAST	
		Contrast Yes/No	<i>No</i>

4CH LOC BH

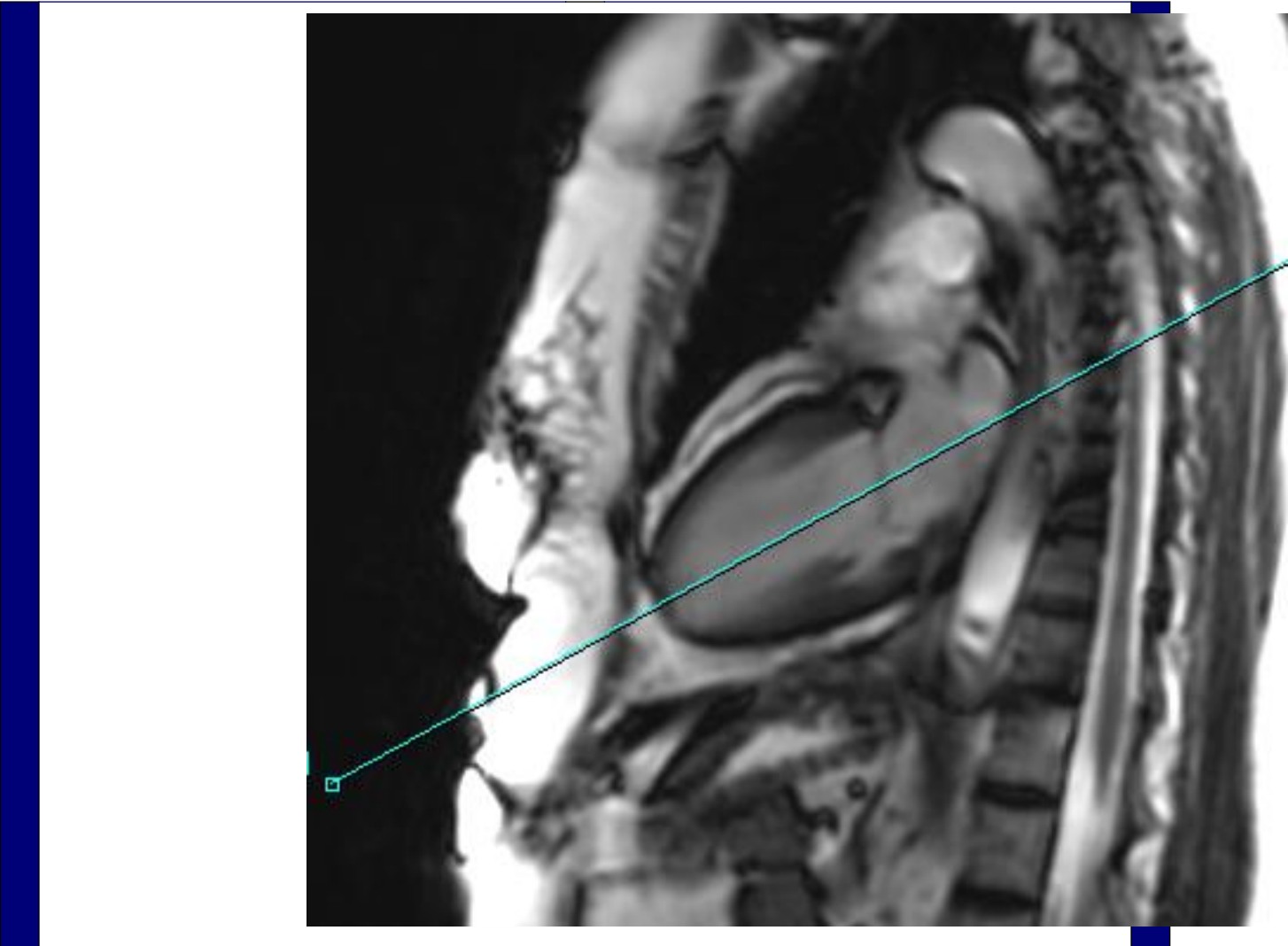
4CH LOC BH

<p>OTHERS</p>	
---------------	--

Protocol Notes



*4 CHAMBER LOC. ANGLE
THROUGH APEX
SPLITTING THE APEX IN
HALF*



Protocol: adult_chest_CARDIAC Cyst

PATIENT POSITION		IMAGING PARAMETERS	
Patient Entry	<i>Feet First</i>	Imaging Mode	<i>2D</i>
Patient Position	<i>Supine</i>	Pulse Sequence	<i>Fiesta</i>
Coil Configuration	<i>Body</i>	Imaging Options	<i>Seq, Fast, Asset</i>
Plane	<i>OBLIQUE</i>	SCAN RANGE	
Series Description	<i>SA LOC FREE BREATH</i>	FOV	<i>41.0</i>
SCAN TIMING		Slice Thickness	<i>8.0</i>
Flip Angle	<i>50</i>	Slice Spacing	<i>0.0</i>
TE	<i>Minimum</i>	ACQ TIMING	
Number of Echoes	<i>1</i>	Freq	<i>160</i>
Receiver Bandwidth	<i>100.00</i>	Phase	<i>160</i>
IMAGE ENHANCE		Freq DIR	<i>S/I</i>
Filter Choice	<i>None</i>	NEX	<i>1.00</i>
GATING/TRIGGER		# of Acq. Before Pause	<i>0</i>
Auto Trigger Type	<i>Off</i>	Phase FOV	<i>0.80</i>
MULTI-PHASE		Auto Shim	<i>On</i>
Seperate Series	<i>0</i>	Phase Correction	<i>No</i>
Mask Phase	<i>0</i>	FMRI	
Mask Pause	<i>0</i>	PSD Trigger	<i>Internal</i>
DIFFUSION		View Order	<i>Bottom/Up</i>
Recon All Images	<i>On</i>	# of Repetitions REST	<i>0</i>
CONTRAST		# of Repetitions ACTIVE	<i>0</i>
Contrast Yes/No	<i>No</i>	SAT	
		Tag Type	<i>None</i>
		TRICKS	
		Pause On/Off	<i>On</i>
		Auto Subtract	<i>0</i>
		Auto SCIC	<i>Off</i>

SA LOC FREE BREATH

SA LOC FREE BREATH

OTHERS

Protocol Notes

h: 2/20

S: 20

/ 1 5

/ 1 3

/ 1 1

9 / 9

9 / 7

9 / 5

9 / 3

9 / 1

IESTA/50

R: 3.5

E: 1.3/Fr

C: 1/1 100kHz

*RX OFF 4 CH
This is done so we can
angle our FOV box*

Protocol: adult_chest_CARDIAC Cyst

PATIENT POSITION		IMAGING PARAMETERS	
Patient Entry	<i>Feet First</i>	Imaging Mode	<i>2D</i>
Patient Position	<i>Supine</i>	Pulse Sequence	<i>Fiesta</i>
Coil Configuration	<i>Body</i>	Imaging Options	<i>Gat, Seq, EDR, Fast, Asset</i>
Plane	<i>OBLIQUE</i>	SCAN RANGE	
Series Description	<i>SA FIESTA CINE BH</i>	FOV	<i>44.0</i>
SCAN TIMING		Slice Thickness	<i>8.0</i>
Flip Angle	<i>45</i>	Slice Spacing	<i>1.0</i>
TE	<i>Minimum</i>	ACQ TIMING	
Number of Echoes	<i>1</i>	Freq	<i>192</i>
Receiver Bandwidth	<i>142.86</i>	Phase	<i>256</i>
IMAGE ENHANCE		Freq DIR	<i>S/I</i>
Filter Choice	<i>None</i>	NEX	<i>1.00</i>
GATING/TRIGGER		# of Acq. Before Pause	<i>1</i>
Auto Trigger Type	<i>On</i>	Phase FOV	<i>0.80</i>
Trigger Type	<i>0</i>	Auto Shim	<i>On</i>
Views per Segment	<i>20</i>	Phase Correction	<i>No</i>
MULTI-PHASE		FMRI	
Seperate Series	<i>0</i>	PSD Trigger	<i>Internal</i>
Mask Phase	<i>0</i>	View Order	<i>Bottom/Up</i>
Mask Pause	<i>0</i>	# of Repetitions REST	<i>0</i>
DIFFUSION		# of Repetitions ACTIVE	<i>0</i>
Recon All Images	<i>On</i>	SAT	
CINE		Tag Type	<i>None</i>
# of Cardiac Phases to Reconstruct	<i>20</i>	TRICKS	
		Pause On/Off	<i>On</i>
		Auto Subtract	<i>0</i>
		Auto SCIC	<i>Off</i>
		CONTRAST	
		Contrast Yes/No	<i>No</i>

SA FIESTA CINE BH

SA FIESTA CINE BH

<p>OTHERS</p>	
---------------	--

Protocol Notes

scan from base to apex RX
OFF 4 CH

Im: 2
QA: 59.6
67 bpm
TD: 54
Ph: 2/20

VS: 20

9 / 15
9 / 13
9 / 11
9 / 9
I 9 / 7
R 9 / 5
A 9 / 3
9 / 1

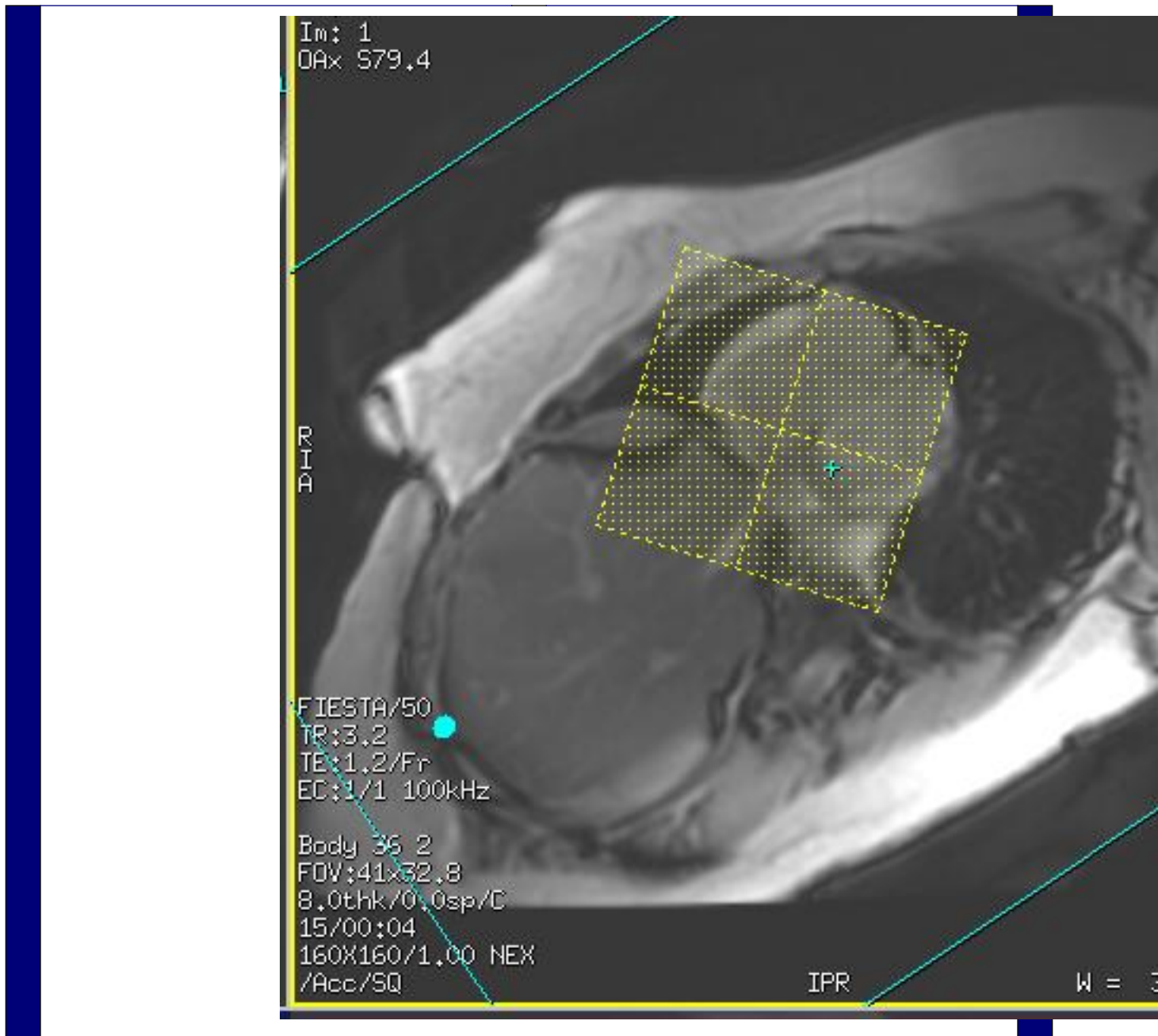
FIESTA/50
TR: 3.5
TE: 1.3/Fr
EC: 1/1 100kHz

Body 36 2
FOV: 45x40.5
7.0thk/0.0sp/C
20/00:12
192x224/1.00 NEX
EG/ACC/ED/SQ

SPR

W =

*rx 2-3 slices posterior to
mitral valve. extend 3-4
slices beyond apex of heart.
Stop scan when you are
through the heart.*



Protocol: adult_chest_CARDIAC Cyst

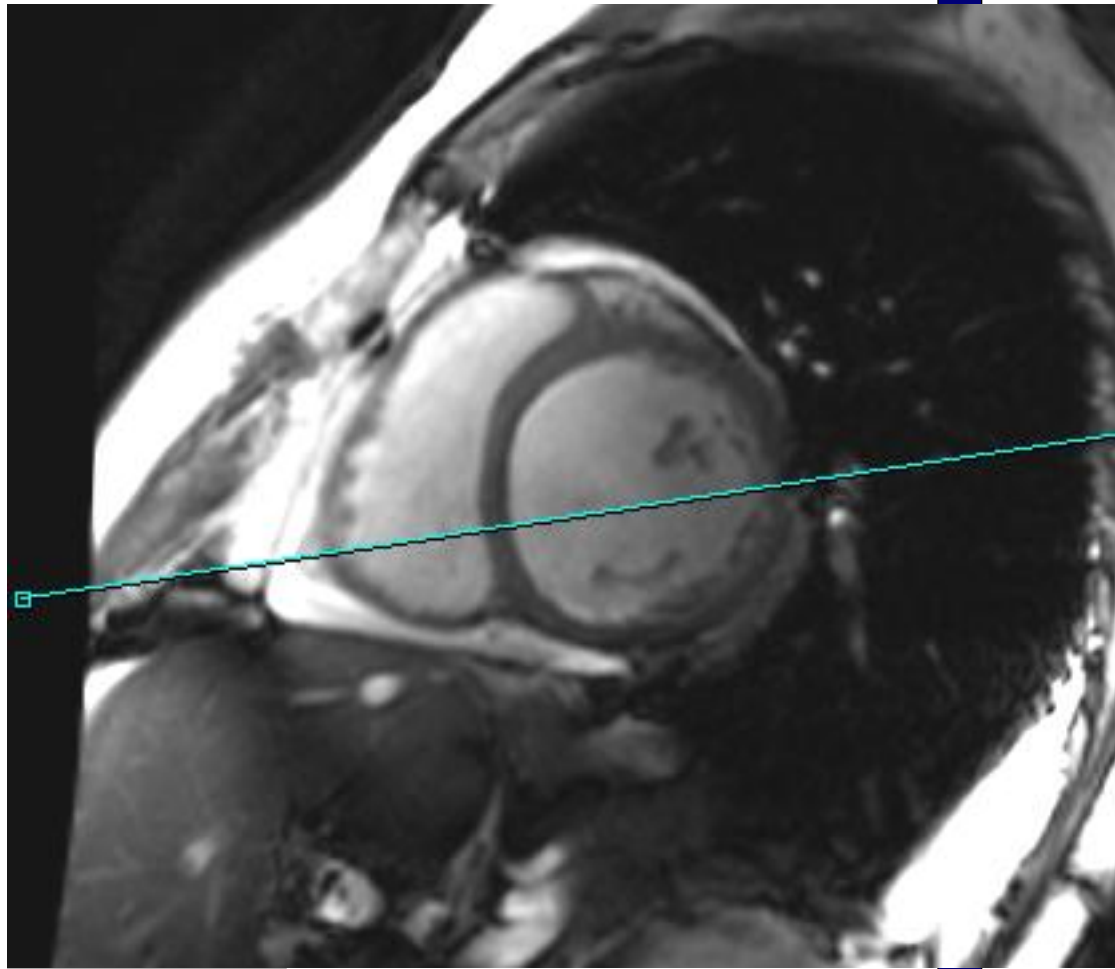
PATIENT POSITION		IMAGING PARAMETERS	
Patient Entry	<i>Feet First</i>	Imaging Mode	<i>2D</i>
Patient Position	<i>Supine</i>	Pulse Sequence	<i>Fiesta</i>
Coil Configuration	<i>Body</i>	Imaging Options	<i>Gat, Seq, EDR, Fast, Asset</i>
Plane	<i>OBLIQUE</i>	SCAN RANGE	
Series Description	<i>4CH FIESTA BH</i>	FOV	<i>42.0</i>
SCAN TIMING		Slice Thickness	<i>8.0</i>
Flip Angle	<i>45</i>	Slice Spacing	<i>0.0</i>
TE	<i>Minimum</i>	ACQ TIMING	
Number of Echoes	<i>1</i>	Freq	<i>192</i>
Receiver Bandwidth	<i>142.86</i>	Phase	<i>192</i>
IMAGE ENHANCE		Freq DIR	<i>R/L</i>
Filter Choice	<i>None</i>	NEX	<i>1.00</i>
GATING/TRIGGER		# of Acq. Before Pause	<i>1</i>
Auto Trigger Type	<i>On</i>	Phase FOV	<i>0.90</i>
Trigger Type	<i>0</i>	Auto Shim	<i>On</i>
Views per Segment	<i>20</i>	Phase Correction	<i>No</i>
MULTI-PHASE		FMRI	
Seperate Series	<i>0</i>	PSD Trigger	<i>Internal</i>
Mask Phase	<i>0</i>	View Order	<i>Bottom/Up</i>
Mask Pause	<i>0</i>	# of Repetitions REST	<i>0</i>
DIFFUSION		# of Repetitions ACTIVE	<i>0</i>
Recon All Images	<i>On</i>	SAT	
CINE		Tag Type	<i>None</i>
# of Cardiac Phases to Reconstruct	<i>20</i>	TRICKS	
		Pause On/Off	<i>On</i>
		Auto Subtract	<i>0</i>
		Auto SCIC	<i>Off</i>
		CONTRAST	
		Contrast Yes/No	<i>No</i>

4CH FIESTA BH

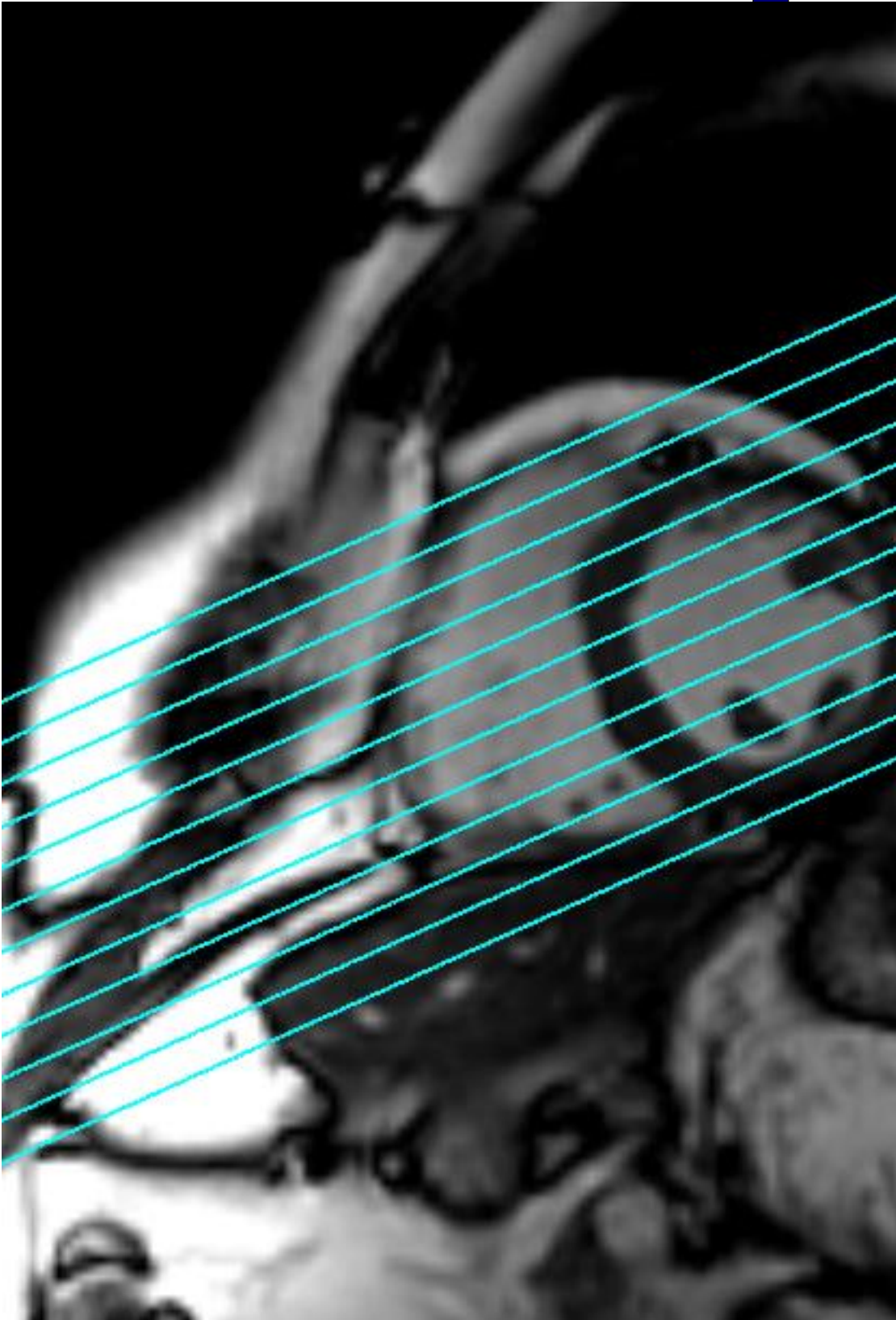
4CH FIESTA BH

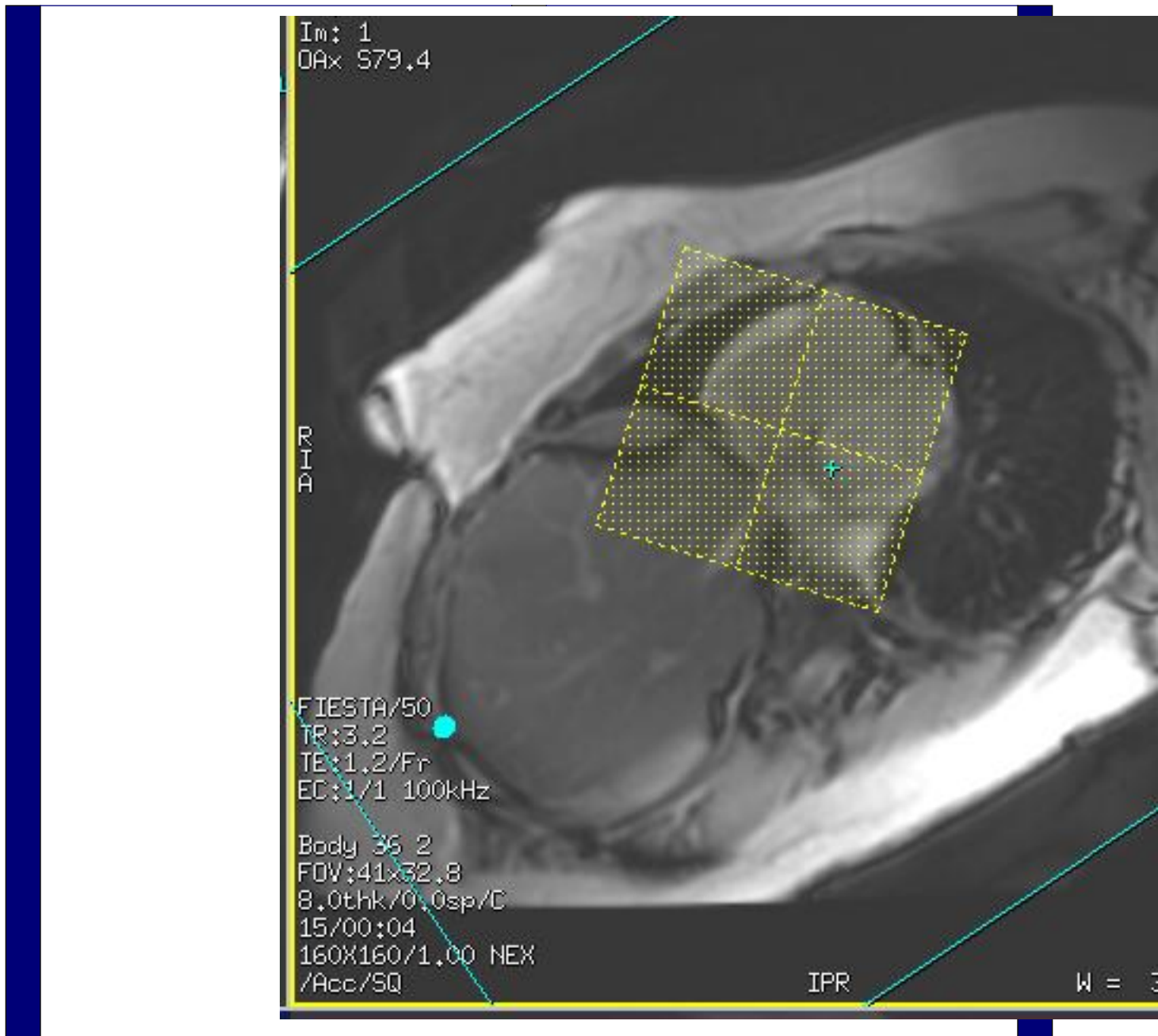
<p>OTHERS</p>	
---------------	--

Protocol Notes



*Scan through entire heart
RX OFF SA FIESTA*





Protocol: adult_chest_CARDIAC Cyst

PATIENT POSITION		IMAGING PARAMETERS	
Patient Entry	<i>Feet First</i>	Imaging Mode	<i>2D</i>
Patient Position	<i>Supine</i>	Pulse Sequence	<i>Fiesta</i>
Coil Configuration	<i>Body</i>	Imaging Options	<i>Gat, Seq, EDR, Fast, Asset</i>
Plane	<i>OBLIQUE</i>	SCAN RANGE	
Series Description	<i>3CH FIESTA BH</i>	FOV	<i>38.0</i>
SCAN TIMING		Slice Thickness	<i>8.0</i>
Flip Angle	<i>45</i>	Slice Spacing	<i>0.0</i>
TE	<i>Minimum</i>	ACQ TIMING	
Number of Echoes	<i>1</i>	Freq	<i>192</i>
Receiver Bandwidth	<i>142.86</i>	Phase	<i>192</i>
IMAGE ENHANCE		Freq DIR	<i>R/L</i>
Filter Choice	<i>None</i>	NEX	<i>1.00</i>
GATING/TRIGGER		# of Acq. Before Pause	<i>1</i>
Auto Trigger Type	<i>On</i>	Phase FOV	<i>1.00</i>
Trigger Type	<i>0</i>	Auto Shim	<i>On</i>
Views per Segment	<i>30</i>	Phase Correction	<i>No</i>
MULTI-PHASE		FMRI	
Seperate Series	<i>0</i>	PSD Trigger	<i>Internal</i>
Mask Phase	<i>0</i>	View Order	<i>Bottom/Up</i>
Mask Pause	<i>0</i>	# of Repetitions REST	<i>0</i>
DIFFUSION		# of Repetitions ACTIVE	<i>0</i>
Recon All Images	<i>On</i>	SAT	
CINE		Tag Type	<i>None</i>
# of Cardiac Phases to Reconstruct	<i>20</i>	TRICKS	
		Pause On/Off	<i>On</i>
		Auto Subtract	<i>0</i>
		Auto SCIC	<i>Off</i>
		CONTRAST	
		Contrast Yes/No	<i>No</i>

3CH FIESTA BH

3CH FIESTA BH

OTHERS

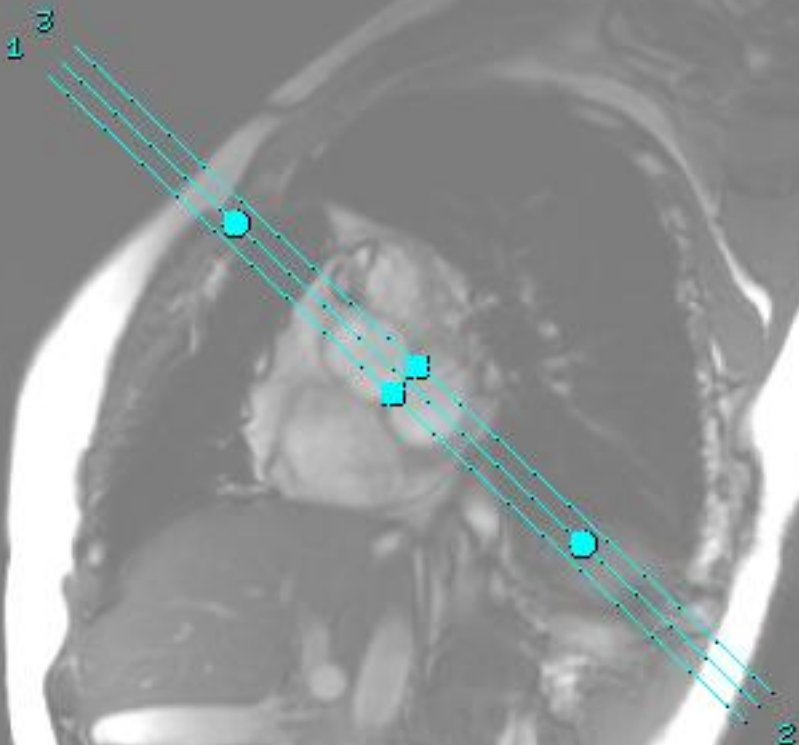
Protocol Notes

314
7/20

20

BTA/45
3.3
1.3/Fr
1/1 100kHz

38 2
:44x35.2
thk/1.0sp
07-01-10-17



RX 1 SLICE THROUGH
SNOWMAN USING
SHORT AXIS VIEW, THEN
ENTER 3 IN THE # OF
SLICES BOX

Protocol: adult_chest_CARDIAC Cyst

PATIENT POSITION		IMAGING PARAMETERS	
Patient Entry	<i>Feet First</i>	Imaging Mode	<i>2D</i>
Patient Position	<i>Supine</i>	Pulse Sequence	<i>Fiesta</i>
Coil Configuration	<i>Body</i>	Imaging Options	<i>Gat, Seq, EDR, Fast, Asset</i>
Plane	<i>OBLIQUE</i>	SCAN RANGE	
Series Description	<i>2CH LA FIESTA BH</i>	FOV	<i>42.0</i>
SCAN TIMING		Slice Thickness	<i>8.0</i>
Flip Angle	<i>45</i>	Slice Spacing	<i>0.0</i>
TE	<i>Minimum</i>	ACQ TIMING	
Number of Echoes	<i>1</i>	Freq	<i>192</i>
Receiver Bandwidth	<i>142.86</i>	Phase	<i>192</i>
IMAGE ENHANCE		Freq DIR	<i>S/I</i>
Filter Choice	<i>None</i>	NEX	<i>1.00</i>
GATING/TRIGGER		# of Acq. Before Pause	<i>1</i>
Auto Trigger Type	<i>On</i>	Phase FOV	<i>0.90</i>
Trigger Type	<i>0</i>	Auto Shim	<i>On</i>
Views per Segment	<i>30</i>	Phase Correction	<i>No</i>
MULTI-PHASE		FMRI	
Seperate Series	<i>0</i>	PSD Trigger	<i>Internal</i>
Mask Phase	<i>0</i>	View Order	<i>Bottom/Up</i>
Mask Pause	<i>0</i>	# of Repetitions REST	<i>0</i>
DIFFUSION		# of Repetitions ACTIVE	<i>0</i>
Recon All Images	<i>On</i>	SAT	
CINE		Tag Type	<i>None</i>
# of Cardiac Phases to Reconstruct	<i>20</i>	TRICKS	
		Pause On/Off	<i>On</i>
		Auto Subtract	<i>0</i>
		Auto SCIC	<i>Off</i>
		CONTRAST	
		Contrast Yes/No	<i>No</i>

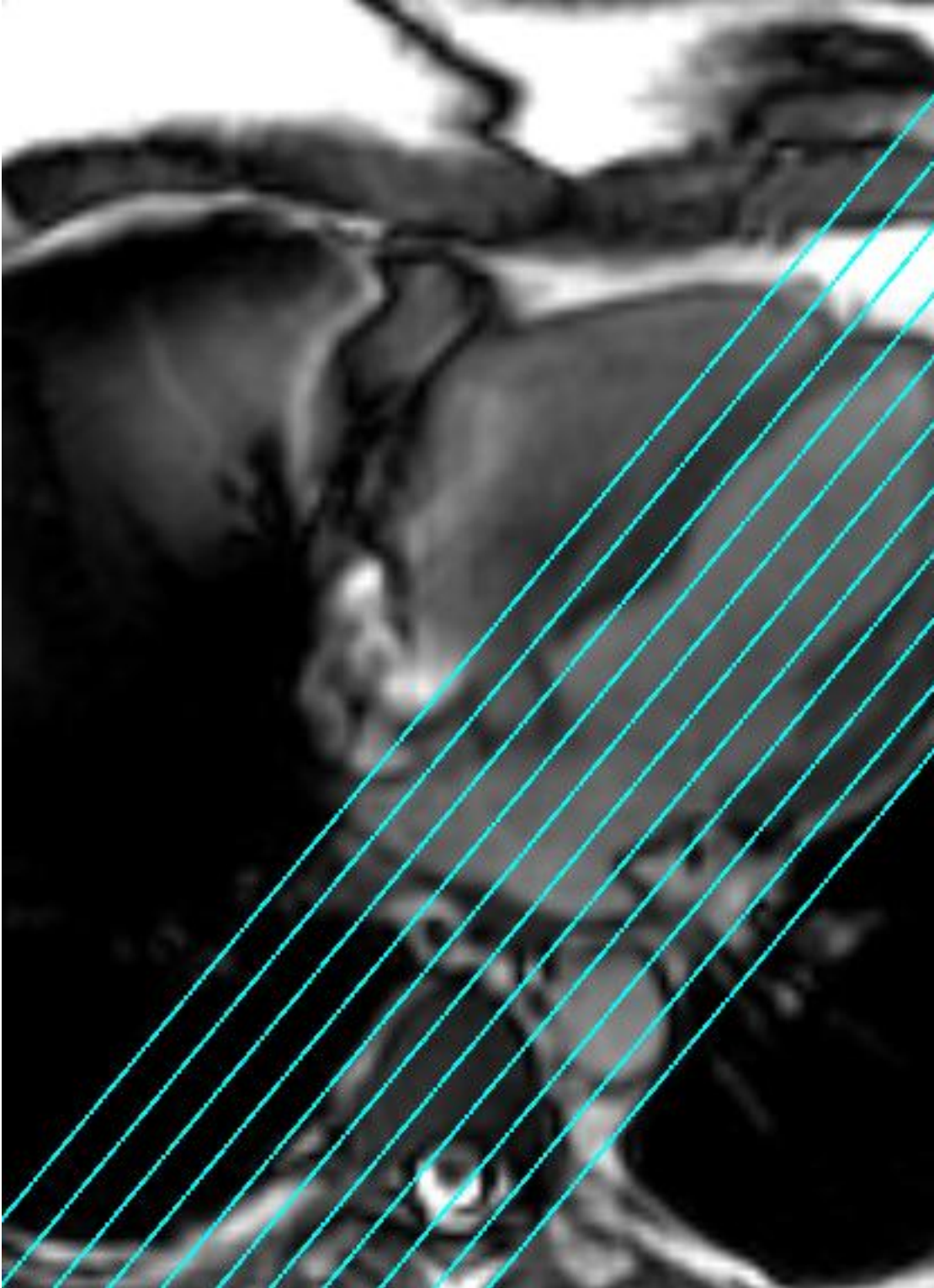
2CH LA FIESTA BH

2CH LA FIESTA BH

OTHERS

Protocol Notes

RX OFF 4 CH VIEW



McLeod Pavilion

Protocol: adult_chest_CARDIAC Cyst

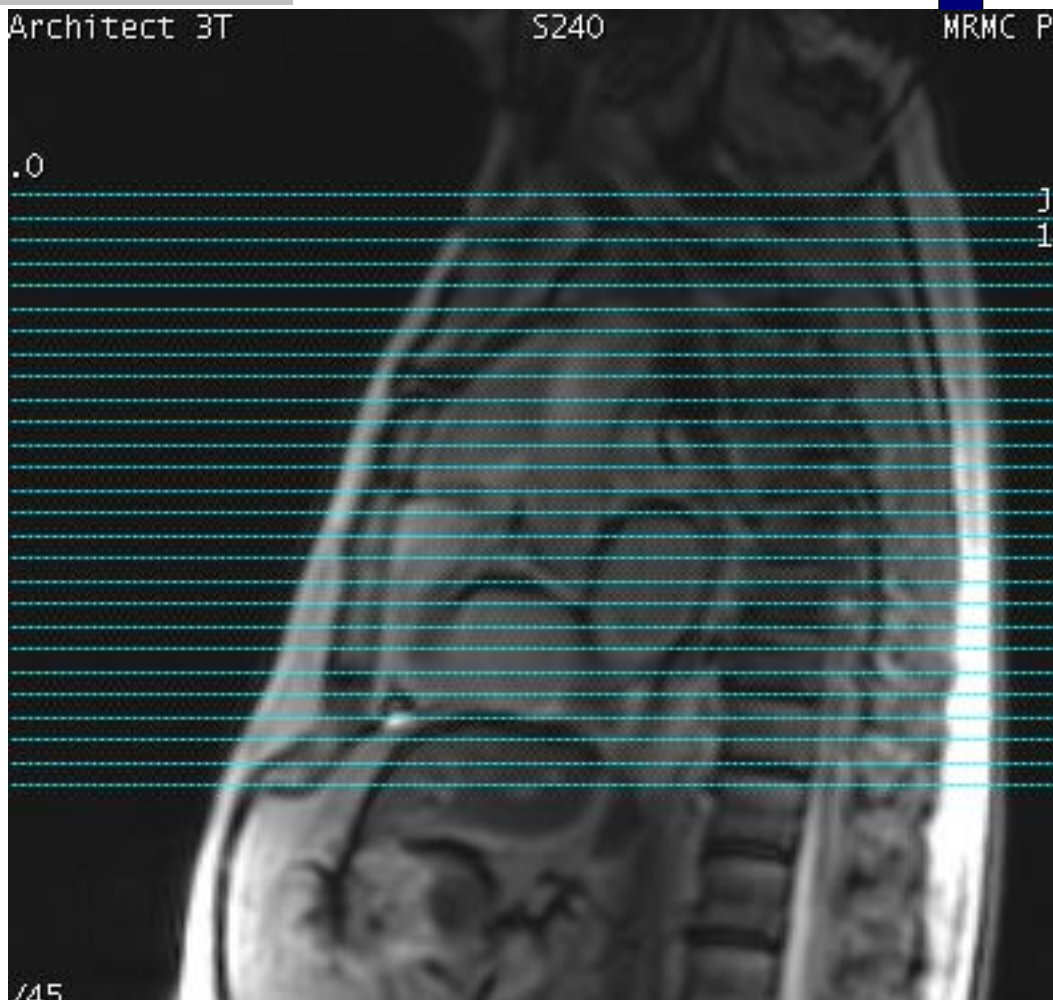
PATIENT POSITION		IMAGING PARAMETERS	
Patient Entry	<i>Feet First</i>	Imaging Mode	<i>2D</i>
Patient Position	<i>Supine</i>	Pulse Sequence	<i>Spin Echo</i>
Coil Configuration	<i>Body</i>	Imaging Options	<i>Gat, Seq, EDR, Fast, ZIP512, SS, BSP, Asset</i>
Plane	<i>AXIAL</i>	SCAN RANGE	
Series Description	<i>AX T2 FB BLACK BLOOD SSFSE</i>	FOV	<i>36.0</i>
SCAN TIMING		Slice Thickness	<i>8.0</i>
TE	<i>50.0</i>	Slice Spacing	<i>0.0</i>
Number of Echoes	<i>1</i>	ACQ TIMING	
Blood Suppression TI	<i>737</i>	Freq	<i>212</i>
Receiver Bandwidth	<i>83.33</i>	Phase	<i>150</i>
IMAGE ENHANCE		Freq DIR	<i>R/L</i>
Filter Choice	<i>A</i>	# of Acq. Before Pause	<i>0</i>
GATING/TRIGGER		Phase FOV	<i>0.90</i>
Auto Trigger Type	<i>Off</i>	Auto Shim	<i>Auto</i>
Trigger Type	<i>1</i>	Phase Correction	<i>No</i>
Minimum Trigger Delay	<i>2</i>	USER CVS	
Cardiac Phase	<i>1</i>	User CV2	<i>240.00</i>
Cardiac Slices	<i>1</i>	User CV13	<i>1.00</i>
FMRI		MULTI-PHASE	
PSD Trigger	<i>Internal</i>	Seperate Series	<i>0</i>
View Order	<i>Bottom/Up</i>	Mask Phase	<i>0</i>
# of Repetitions REST	<i>0</i>	Mask Pause	<i>0</i>
# of Repetitions ACTIVE	<i>0</i>	DIFFUSION	
SAT		Recon All Images	<i>On</i>
Tag Type	<i>None</i>	CONTRAST	
TRICKS		Contrast Yes/No	<i>No</i>
# of RR Intervals	<i>2</i>		
Trigger Delay	<i>748</i>		
Pause On/Off	<i>On</i>		
Auto Subtract	<i>0</i>		
Auto SCIC	<i>2</i>		

AX T2 FB BLACK BLOOD SSFSE

AX T2 FB BLACK BLOOD SSFSE

OTHERS

Protocol Notes



RX OFF SAG 3 PLANE
LOC.
SCAN FROM ABOVE
ARCH TO BELOW HEART

Protocol: adult_chest_CARDIAC Cyst

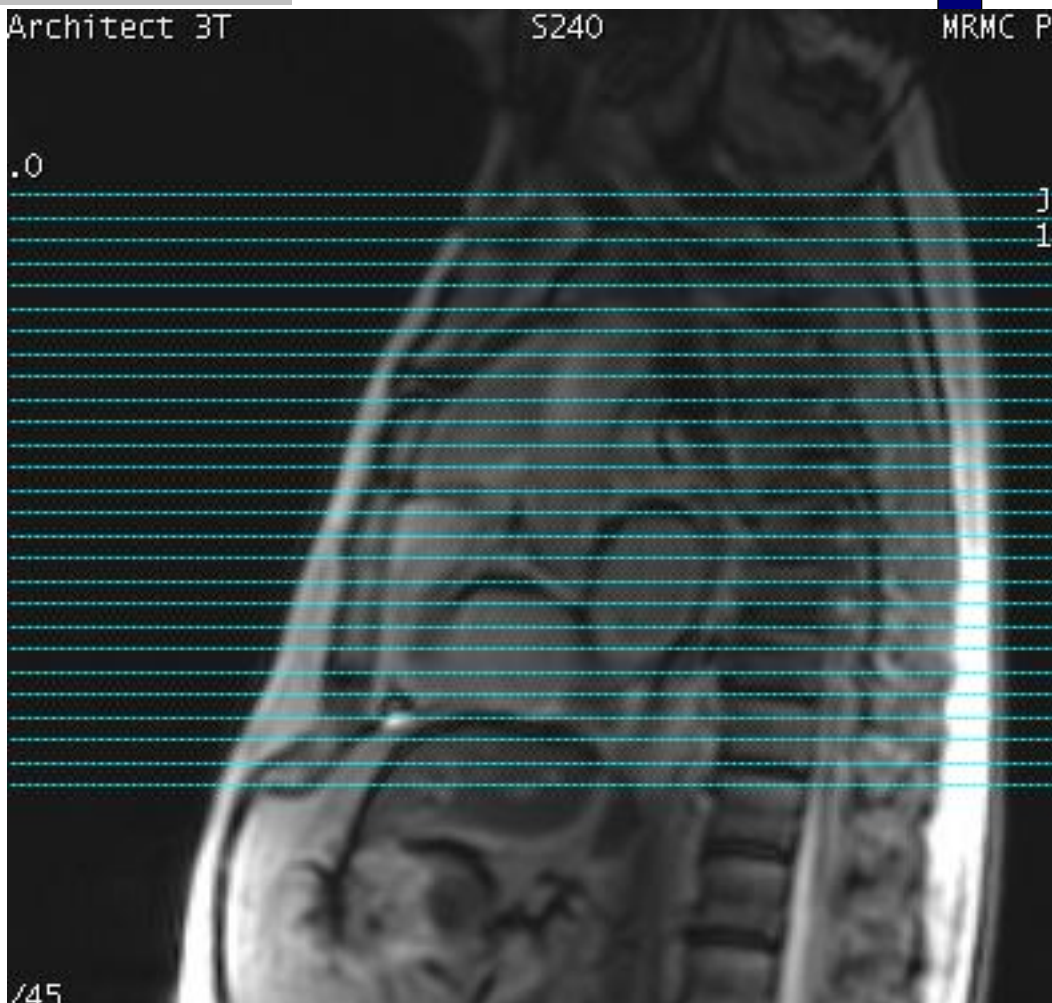
PATIENT POSITION		IMAGING PARAMETERS	
Patient Entry	<i>Feet First</i>	Imaging Mode	<i>2D</i>
Patient Position	<i>Supine</i>	Pulse Sequence	<i>FSE-XL</i>
Coil Configuration	<i>Body</i>	Imaging Options	<i>Gat, Seq, EDR, Fast, ZIP512, BSP, Asset, IrP</i>
Plane	<i>AXIAL</i>	PSD Name	<i>FSE-XL</i>
Series Description	<i>AX Triple IR FB BLACK BLOOD</i>	SCAN RANGE	
SCAN TIMING		FOV	<i>36.0</i>
Flip Angle	<i>107</i>	Slice Thickness	<i>8.0</i>
TE	<i>65.0</i>	Slice Spacing	<i>0.0</i>
Number of Echoes	<i>1</i>	ACQ TIMING	
TI	<i>220</i>	Freq	<i>224</i>
Echo Train Length	<i>23</i>	Phase	<i>192</i>
Blood Suppression TI	<i>1053</i>	Freq DIR	<i>R/L</i>
Receiver Bandwidth	<i>50.00</i>	Fat Shift DIR	<i>Normal (L)</i>
IMAGE ENHANCE		NEX	<i>1.00</i>
Filter Choice	<i>A</i>	# of Acq. Before Pause	<i>0</i>
GATING/TRIGGER		Phase FOV	<i>1.00</i>
Auto Trigger Type	<i>On</i>	Auto Shim	<i>Auto</i>
Trigger Type	<i>0</i>	Phase Correction	<i>No</i>
Minimum Trigger Delay	<i>2</i>	USER CVS	
Cardiac Phase	<i>1</i>	User CV14	<i>3.33</i>
Cardiac Slices	<i>1</i>	User CV22	<i>1.00</i>
FMRI		MULTI-PHASE	
PSD Trigger	<i>Internal</i>	Seperate Series	<i>0</i>
View Order	<i>Bottom/Up</i>	Mask Phase	<i>0</i>
# of Repetitions REST	<i>0</i>	Mask Pause	<i>0</i>
# of Repetitions ACTIVE	<i>0</i>	DIFFUSION	
SAT		Recon All Images	<i>On</i>
Tag Type	<i>None</i>	CONTRAST	
TRICKS		Contrast Yes/No	<i>No</i>
# of RR Intervals	<i>2</i>		
Trigger Delay	<i>1065</i>		
Pause On/Off	<i>On</i>		
Auto Subtract	<i>0</i>		
Auto SCIC	<i>2</i>		

AX Triple IR FB BLACK BLOOD

AX Triple IR FB BLACK BLOOD

OTHERS

Protocol Notes



*RX OFF SAG 3 PLANE
LOC.
SCAN FROM ABOVE
ARCH TO BELOW HEART*

Protocol: adult_chest_CARDIAC Cyst

PATIENT POSITION		IMAGING PARAMETERS	
Patient Entry	<i>Feet First</i>	Imaging Mode	<i>2D</i>
Patient Position	<i>Supine</i>	Pulse Sequence	<i>FSE-XL</i>
Coil Configuration	<i>Body</i>	Imaging Options	<i>Gat, Seq, EDR, Fast, ZIP512, BSP, Asset</i>
Plane	<i>OBLIQUE</i>	SCAN RANGE	
Series Description	<i>T1 Double IR</i>	FOV	<i>36.0</i>
SCAN TIMING		Slice Thickness	<i>8.0</i>
Flip Angle	<i>107</i>	Slice Spacing	<i>0.0</i>
TE	<i>21.0</i>	ACQ TIMING	
Number of Echoes	<i>1</i>	Freq	<i>224</i>
Echo Train Length	<i>9</i>	Phase	<i>224</i>
Blood Suppression TI	<i>418</i>	Freq DIR	<i>Unswap</i>
Receiver Bandwidth	<i>62.50</i>	Fat Shift DIR	<i>Normal</i>
IMAGE ENHANCE		NEX	<i>1.00</i>
Filter Choice	<i>None</i>	Phase FOV	<i>0.90</i>
GATING/TRIGGER		Auto Shim	<i>Auto</i>
Auto Trigger Type	<i>On</i>	Phase Correction	<i>No</i>
Trigger Type	<i>0</i>	USER CVS	
Minimum Trigger Delay	<i>4</i>	User CV14	<i>3.33</i>
Cardiac Phase	<i>1</i>	User CV22	<i>1.00</i>
Cardiac Slices	<i>1</i>	MULTI-PHASE	
FMRI		Seperate Series	<i>0</i>
PSD Trigger	<i>Internal</i>	Mask Phase	<i>0</i>
View Order	<i>Bottom/Up</i>	Mask Pause	<i>0</i>
# of Repetitions REST	<i>0</i>	DIFFUSION	
# of Repetitions ACTIVE	<i>0</i>	Recon All Images	<i>On</i>
SAT		CONTRAST	
Tag Type	<i>None</i>	Contrast Yes/No	<i>No</i>
TRICKS			
# of RR Intervals	<i>1</i>		
Trigger Delay	<i>674</i>		
Pause On/Off	<i>On</i>		
Auto Subtract	<i>0</i>		
Auto SCIC	<i>2</i>		

T1 Double IR

T1 Double IR

OTHERS

Protocol Notes

IMPORTANT TIPS:
-Make sure that Trigger Delay is set to Diastolic from the pull down menu, as cardiac motion is reduced.
- change CV14 from 3.33 (default) to 1.25-1.5 if blood signal is not properly nulled.
- if Black Blood imaging is performed after contrast injection, BSP TI needs to be adjusted manually.
- Use always Shim Volume box to cover only the heart.
- Use Localized TG under Shim Volume to improve IQ.

Protocol: adult_chest_CARDIAC Cyst

PATIENT POSITION		IMAGING PARAMETERS	
Patient Entry	<i>Feet First</i>	Imaging Mode	<i>2D</i>
Patient Position	<i>Supine</i>	Pulse Sequence	<i>FSE-XL</i>
Coil Configuration	<i>Body</i>	Imaging Options	<i>Gat, Seq, EDR, Fast, ZIP512, BSP, Asset</i>
Plane	<i>OBLIQUE</i>	SCAN RANGE	
Series Description	<i>T1 Double IR</i>	FOV	<i>36.0</i>
SCAN TIMING		Slice Thickness	<i>8.0</i>
Flip Angle	<i>107</i>	Slice Spacing	<i>0.0</i>
TE	<i>21.0</i>	ACQ TIMING	
Number of Echoes	<i>1</i>	Freq	<i>224</i>
Echo Train Length	<i>9</i>	Phase	<i>224</i>
Blood Suppression TI	<i>418</i>	Freq DIR	<i>Unswap</i>
Receiver Bandwidth	<i>62.50</i>	Fat Shift DIR	<i>Normal</i>
IMAGE ENHANCE		NEX	<i>1.00</i>
Filter Choice	<i>None</i>	Phase FOV	<i>0.90</i>
GATING/TRIGGER		Auto Shim	<i>Auto</i>
Auto Trigger Type	<i>On</i>	Phase Correction	<i>No</i>
Trigger Type	<i>0</i>	USER CVS	
Minimum Trigger Delay	<i>4</i>	User CV14	<i>3.33</i>
Cardiac Phase	<i>1</i>	User CV22	<i>1.00</i>
Cardiac Slices	<i>1</i>	MULTI-PHASE	
FMRI		Seperate Series	<i>0</i>
PSD Trigger	<i>Internal</i>	Mask Phase	<i>0</i>
View Order	<i>Bottom/Up</i>	Mask Pause	<i>0</i>
# of Repetitions REST	<i>0</i>	DIFFUSION	
# of Repetitions ACTIVE	<i>0</i>	Recon All Images	<i>On</i>
SAT		CONTRAST	
Tag Type	<i>None</i>	Contrast Yes/No	<i>No</i>
TRICKS			
# of RR Intervals	<i>1</i>		
Trigger Delay	<i>674</i>		
Pause On/Off	<i>On</i>		
Auto Subtract	<i>0</i>		
Auto SCIC	<i>2</i>		

T1 Double IR

T1 Double IR

OTHERS

Protocol Notes

IMPORTANT TIPS:
-Make sure that Trigger Delay is set to Diastolic from the pull down menu, as cardiac motion is reduced.
- change CV14 from 3.33 (default) to 1.25-1.5 if blood signal is not properly nulled.
- if Black Blood imaging is performed after contrast injection, BSP TI needs to be adjusted manually.
- Use always Shim Volume box to cover only the heart.
- Use Localized TG under Shim Volume to improve IQ.

McLeod Pavilion

Protocol: adult_chest_CARDIAC Cyst

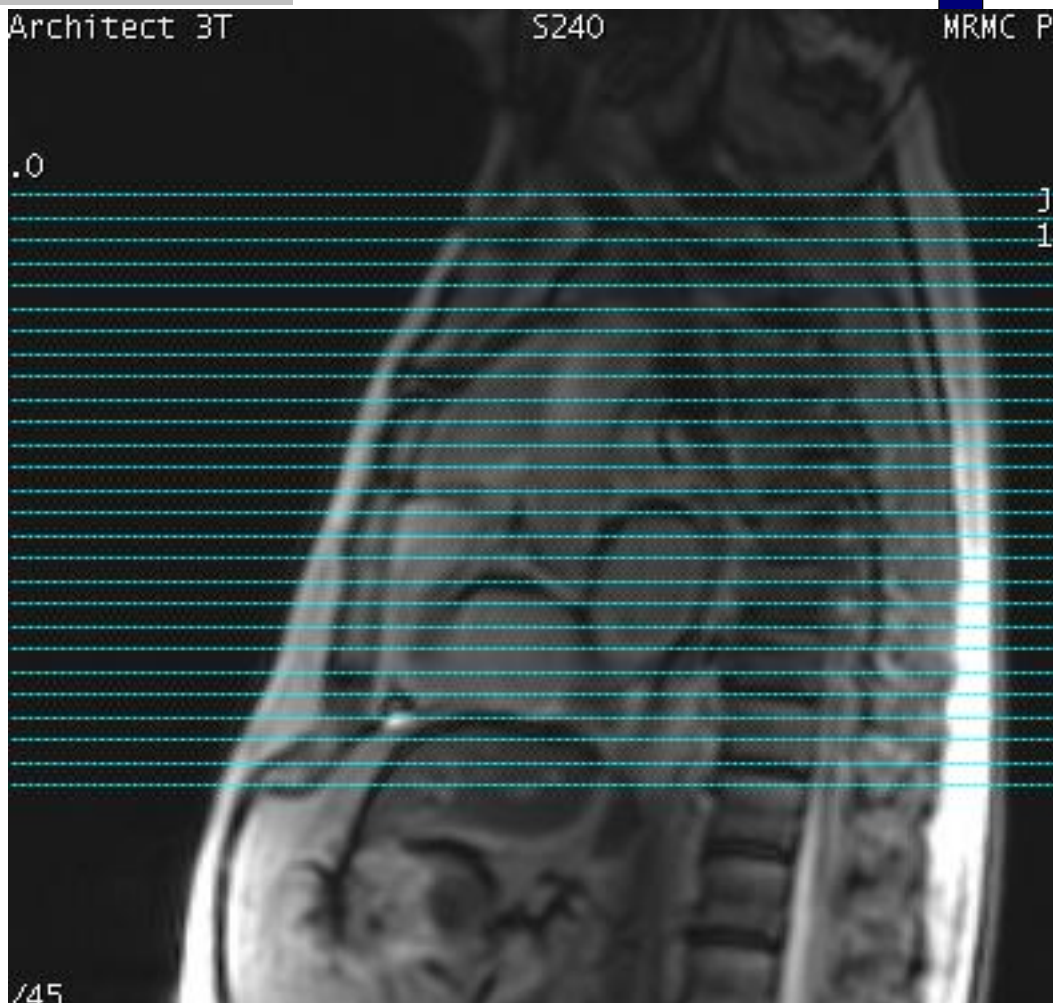
PATIENT POSITION		IMAGING PARAMETERS	
Patient Entry	Feet First	Imaging Mode	2D
Patient Position	Supine	Pulse Sequence	Spin Echo
Coil Configuration	Body	Imaging Options	Gat, Seq, EDR, Fast, ZIP512, SS, BSP, Asset
Plane	AXIAL		
Series Description	AX T2 FB BLACK BLOOD SSFSE		
SCAN TIMING		SCAN RANGE	
TE	50.0	FOV	36.0
Number of Echoes	1	Slice Thickness	8.0
Blood Suppression TI	737	Slice Spacing	0.0
Receiver Bandwidth	83.33		
IMAGE ENHANCE		ACQ TIMING	
Filter Choice	A	Freq	212
		Phase	150
GATING/TRIGGER		Freq DIR	R/L
Auto Trigger Type	Off	# of Acq. Before Pause	0
Trigger Type	1	Phase FOV	0.90
Minimum Trigger Delay	2	Auto Shim	Auto
Cardiac Phase	1	Phase Correction	No
Cardiac Slices	1		
FMRI		USER CVS	
PSD Trigger	Internal	User CV2	240.00
View Order	Bottom/Up	User CV13	1.00
# of Repetitions REST	0		
# of Repetitions ACTIVE	0	MULTI-PHASE	
		Seperate Series	0
SAT		Mask Phase	0
Tag Type	None	Mask Pause	0
TRICKS		DIFFUSION	
# of RR Intervals	2	Recon All Images	On
Trigger Delay	748	CONTRAST	
Pause On/Off	On	Contrast Yes/No	No
Auto Subtract	0		
Auto SCIC	2		

AX T2 FB BLACK BLOOD SSFSE

AX T2 FB BLACK BLOOD SSFSE

OTHERS

Protocol Notes



*RX OFF SAG 3 PLANE
LOC.
SCAN FROM ABOVE
ARCH TO BELOW HEART*

Protocol: adult_chest_CARDIAC Cyst

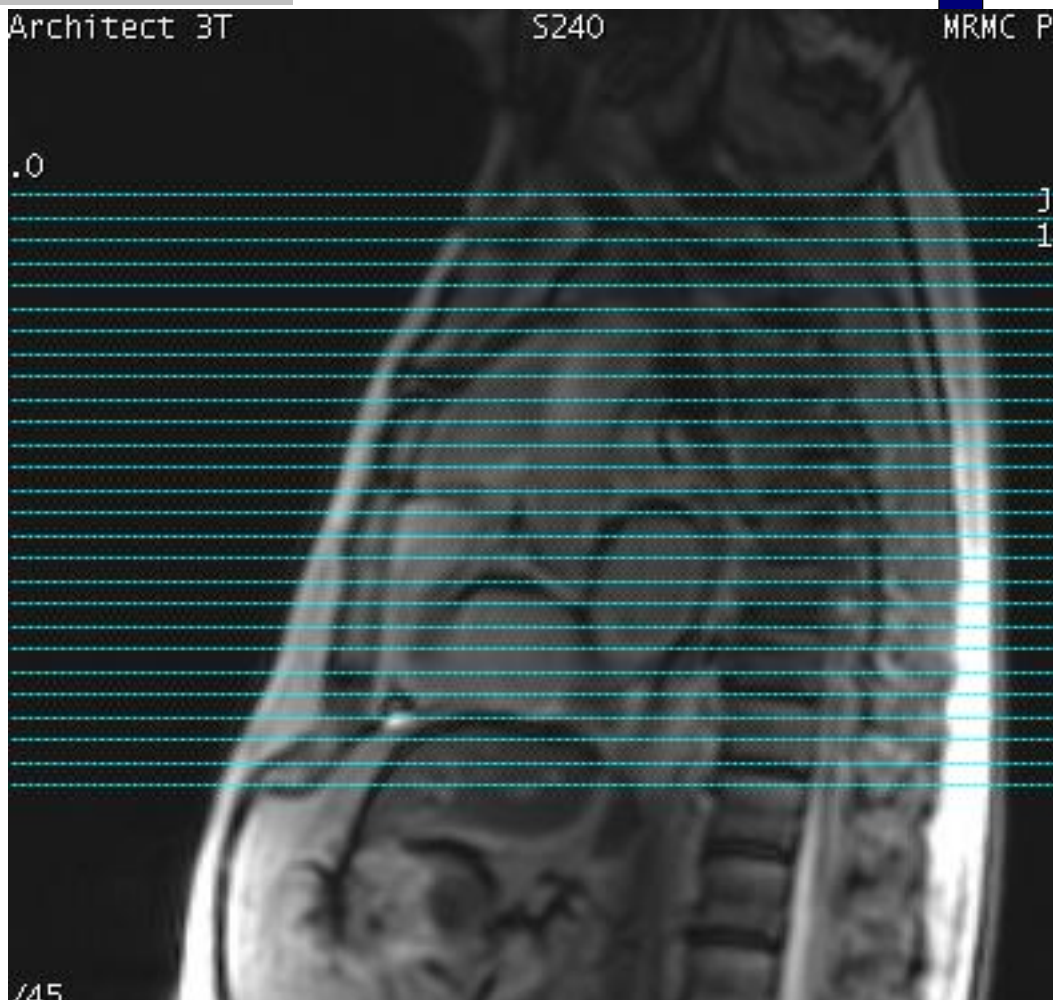
PATIENT POSITION		IMAGING PARAMETERS	
Patient Entry	<i>Feet First</i>	Imaging Mode	<i>2D</i>
Patient Position	<i>Supine</i>	Pulse Sequence	<i>FSE-XL</i>
Coil Configuration	<i>Body</i>	Imaging Options	<i>Gat, Seq, EDR, Fast, ZIP512, BSP, Asset, IrP</i>
Plane	<i>AXIAL</i>	PSD Name	<i>FSE-XL</i>
Series Description	<i>AX Triple IR FB BLACK BLOOD</i>		
SCAN TIMING		SCAN RANGE	
Flip Angle	<i>107</i>	FOV	<i>36.0</i>
TE	<i>65.0</i>	Slice Thickness	<i>8.0</i>
Number of Echoes	<i>1</i>	Slice Spacing	<i>0.0</i>
TI	<i>220</i>	ACQ TIMING	
Echo Train Length	<i>23</i>	Freq	<i>224</i>
Blood Suppression TI	<i>1090</i>	Phase	<i>192</i>
Receiver Bandwidth	<i>50.00</i>	Freq DIR	<i>R/L</i>
IMAGE ENHANCE		Fat Shift DIR	<i>Normal (L)</i>
Filter Choice	<i>A</i>	NEX	<i>1.00</i>
GATING/TRIGGER		# of Acq. Before Pause	<i>0</i>
Auto Trigger Type	<i>Off</i>	Phase FOV	<i>1.00</i>
Trigger Type	<i>1</i>	Auto Shim	<i>Auto</i>
Minimum Trigger Delay	<i>2</i>	Phase Correction	<i>No</i>
Cardiac Phase	<i>1</i>	USER CVS	
Cardiac Slices	<i>1</i>	User CV14	<i>3.33</i>
FMRI		User CV22	<i>1.00</i>
PSD Trigger	<i>Internal</i>	MULTI-PHASE	
View Order	<i>Bottom/Up</i>	Seperate Series	<i>0</i>
# of Repetitions REST	<i>0</i>	Mask Phase	<i>0</i>
# of Repetitions ACTIVE	<i>0</i>	Mask Pause	<i>0</i>
SAT		DIFFUSION	
Tag Type	<i>None</i>	Recon All Images	<i>On</i>
TRICKS		CONTRAST	
# of RR Intervals	<i>2</i>	Contrast Yes/No	<i>No</i>
Trigger Delay	<i>1101</i>		
Pause On/Off	<i>On</i>		
Auto Subtract	<i>0</i>		
Auto SCIC	<i>2</i>		

AX Triple IR FB BLACK BLOOD

AX Triple IR FB BLACK BLOOD

OTHERS

Protocol Notes



RX OFF SAG 3 PLANE
LOC.
SCAN FROM ABOVE
ARCH TO BELOW HEART

Protocol: adult_chest_CARDIAC Cyst

PATIENT POSITION		IMAGING PARAMETERS	
Patient Entry	<i>Feet First</i>	Imaging Mode	<i>2D</i>
Patient Position	<i>Supine</i>	Pulse Sequence	<i>SPGR</i>
Coil Configuration	<i>Body</i>	Imaging Options	<i>Gat, EDR, Fast, PS, Asset, IrP</i>
Plane	<i>OBLIQUE</i>	SCAN RANGE	
Series Description	<i>4CH SS PS MDE PRE</i>	FOV	<i>42.0</i>
SCAN TIMING		Slice Thickness	<i>8.0</i>
Flip Angle	<i>20</i>	Slice Spacing	<i>0.0</i>
Number of Echoes	<i>1</i>	ACQ TIMING	
TI	<i>600</i>	Freq	<i>156</i>
Receiver Bandwidth	<i>62.50</i>	Phase	<i>140</i>
IMAGE ENHANCE		Freq DIR	<i>R/L</i>
Filter Choice	<i>A</i>	NEX	<i>1.00</i>
GATING/TRIGGER		# of Acq. Before Pause	<i>4</i>
Auto Trigger Type	<i>Off</i>	Phase FOV	<i>0.90</i>
Trigger Type	<i>1</i>	Auto Shim	<i>Auto</i>
Minimum Trigger Delay	<i>2</i>	Phase Correction	<i>No</i>
Cardiac Phase	<i>1</i>	FMRI	
Cardiac Slices	<i>1</i>	PSD Trigger	<i>Internal</i>
MULTI-PHASE		View Order	<i>Bottom/Up</i>
Seperate Series	<i>0</i>	# of Repetitions REST	<i>0</i>
Mask Phase	<i>0</i>	# of Repetitions ACTIVE	<i>0</i>
Mask Pause	<i>0</i>	SAT	
DIFFUSION		Tag Type	<i>None</i>
Recon All Images	<i>On</i>	TRICKS	
CINE		# of RR Intervals	<i>2</i>
# of Cardiac Phases to Reconstruct	<i>20</i>	Trigger Delay	<i>605</i>
		Pause On/Off	<i>On</i>
		Auto Subtract	<i>0</i>
		Auto SCIC	<i>Off</i>
		CONTRAST	
		Contrast Yes/No	<i>No</i>

4CH SS PS MDE PRE

4CH SS PS MDE PRE

Protocol: adult_chest_CARDIAC Cyst

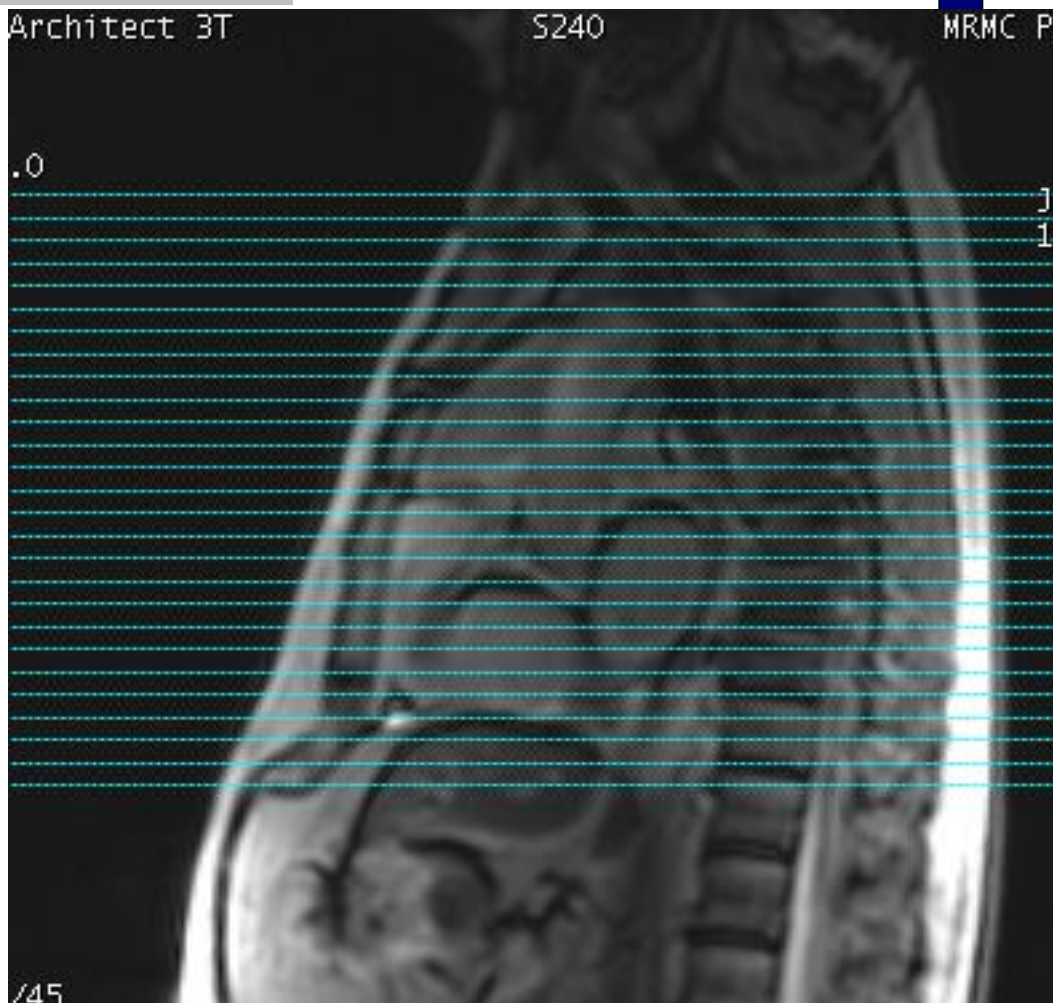
PATIENT POSITION		IMAGING PARAMETERS	
Patient Entry	Feet First	Imaging Mode	2D
Patient Position	Supine	Pulse Sequence	FSE-XL
Coil Configuration	Body	Imaging Options	FC, Gat, Seq, EDR, Fast, ZIP512, BSP, Asset, IrP
Plane	AXIAL	PSD Name	FSE-XL
Series Description	AX Triple IR FB BLACK BLOOD		
SCAN TIMING		SCAN RANGE	
Flip Angle	107	FOV	38.0
TE	65.0	Slice Thickness	8.0
Number of Echoes	1	Slice Spacing	0.0
TI	220	ACQ TIMING	
Echo Train Length	23	Freq	224
Blood Suppression TI	1062	Phase	192
Receiver Bandwidth	50.00	Freq DIR	R/L
		Fat Shift DIR	Normal (L)
IMAGE ENHANCE		NEX	1.00
Filter Choice	A	# of Acq. Before Pause	0
GATING/TRIGGER		Phase FOV	0.90
Auto Trigger Type	Off	Auto Shim	Auto
Trigger Type	1	Phase Correction	No
Minimum Trigger Delay	2	Flow Direction	Slice
Cardiac Phase	1	Compensation	
Cardiac Slices	1	USER CVS	
FMRI		User CV14	3.33
PSD Trigger	Internal	User CV22	1.00
View Order	Bottom/Up	MULTI-PHASE	
# of Repetitions REST	0	Seperate Series	0
# of Repetitions ACTIVE	0	Mask Phase	0
SAT		Mask Pause	0
Tag Type	None	DIFFUSION	
TRICKS		Recon All Images	On
# of RR Intervals	2	CONTRAST	
Trigger Delay	1074	Contrast Yes/No	No
Pause On/Off	On		
Auto Subtract	0		
Auto SCIC	2		

AX Triple IR FB BLACK BLOOD

AX Triple IR FB BLACK BLOOD

OTHERS

Protocol Notes



*RX OFF SAG 3 PLANE
LOC.
SCAN FROM ABOVE
ARCH TO BELOW HEART*

Protocol: adult_chest_CARDIAC Cyst

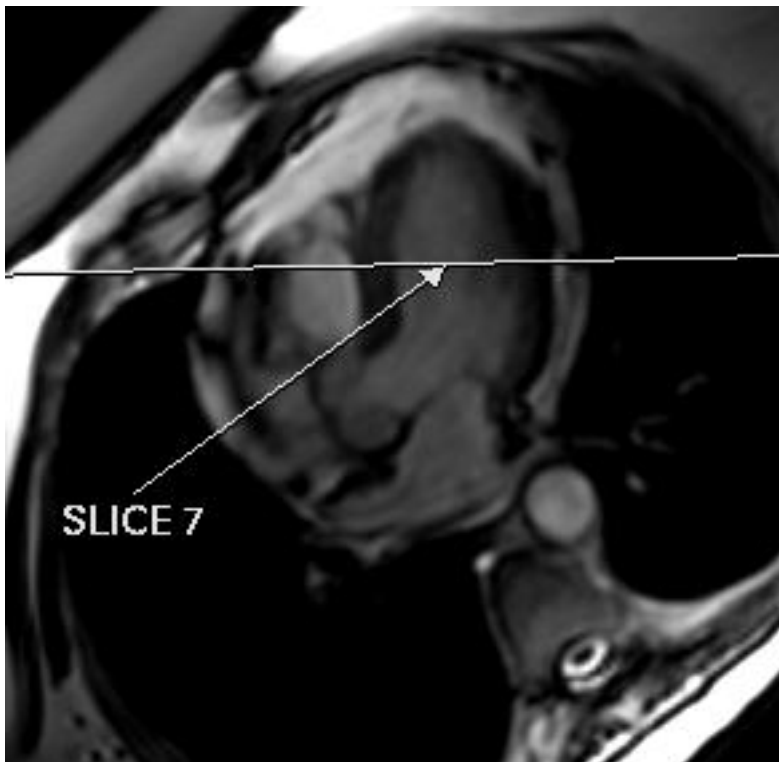
PATIENT POSITION		IMAGING PARAMETERS	
Patient Entry	<i>Feet First</i>	Imaging Mode	<i>2D</i>
Patient Position	<i>Supine</i>	Pulse Sequence	<i>CINE IR</i>
Coil Configuration	<i>Body</i>	Imaging Options	<i>Gat, Seq, EDR, Fast, IrP</i>
Plane	<i>OBLIQUE</i>	SCAN RANGE	
Series Description	<i>CINE IR 2RR BH</i>	FOV	<i>40.0</i>
SCAN TIMING		Slice Thickness	<i>8.0</i>
Flip Angle	<i>5</i>	Slice Spacing	<i>0.0</i>
TE	<i>Min Full</i>	ACQ TIMING	
Number of Echoes	<i>1</i>	Freq	<i>128</i>
Receiver Bandwidth	<i>50.00</i>	Phase	<i>128</i>
IMAGE ENHANCE		Freq DIR	<i>S/I</i>
Filter Choice	<i>None</i>	NEX	<i>1.00</i>
GATING/TRIGGER		Phase FOV	<i>0.80</i>
Auto Trigger Type	<i>Off</i>	Auto Shim	<i>Auto</i>
Trigger Type	<i>1</i>	Phase Correction	<i>No</i>
Cardiac Phase	<i>1</i>	FMRI	
Cardiac Slices	<i>1</i>	PSD Trigger	<i>Internal</i>
Views per Segment	<i>14</i>	View Order	<i>Bottom/Up</i>
MULTI-PHASE		# of Repetitions REST	<i>0</i>
Seperate Series	<i>0</i>	# of Repetitions ACTIVE	<i>0</i>
Mask Phase	<i>0</i>	SAT	
Mask Pause	<i>0</i>	Tag Type	<i>None</i>
DIFFUSION		TRICKS	
Recon All Images	<i>On</i>	# of RR Intervals	<i>2</i>
CINE		Pause On/Off	<i>On</i>
# of Cardiac Phases to Reconstruct	<i>30</i>	Auto Subtract	<i>0</i>
		Auto SCIC	<i>Off</i>
		CONTRAST	
		Contrast Yes/No	<i>Yes</i>

CINE IR 2RR BH

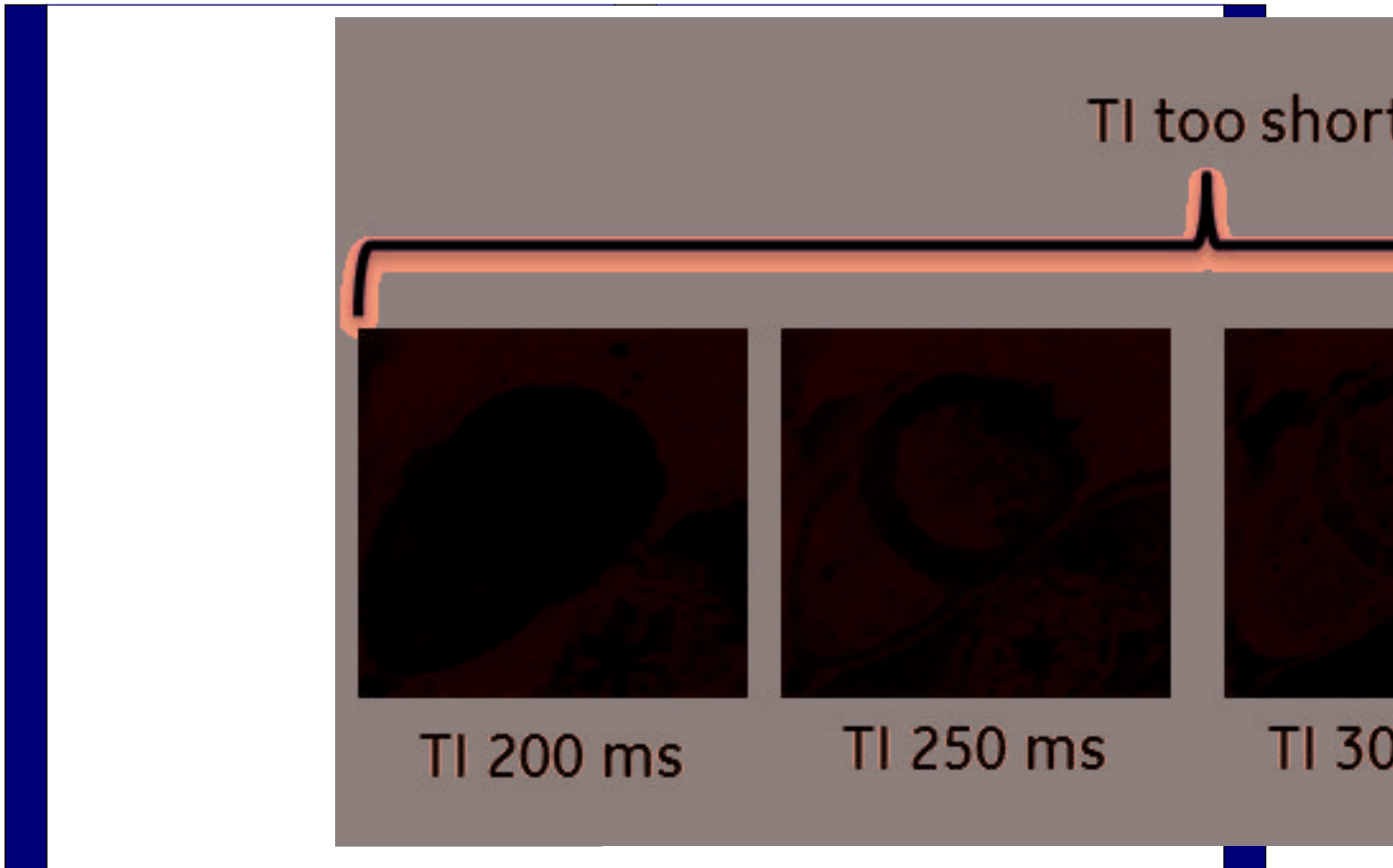
CINE IR 2RR BH

<p>OTHERS</p>	
---------------	--

Protocol Notes



*RX 1 SLICE OFF 4 CH TO
DETERMINE PROPER
PREP TIME. CHOOSE
THE BEST T1 TIME OFF
THE VIEWER(LOOKING
FOR DARKEST
MYOCARDIUM)*



McLeod Pavilion

Protocol: adult_chest_CARDIAC Cyst

PATIENT POSITION		IMAGING PARAMETERS	
Patient Entry	<i>Feet First</i>	Imaging Mode	<i>2D</i>
Patient Position	<i>Supine</i>	Pulse Sequence	<i>SPGR</i>
Coil Configuration	<i>Body</i>	Imaging Options	<i>Gat, EDR, Fast, PS, Asset, IrP</i>
Plane	<i>OBLIQUE</i>	SCAN RANGE	
Series Description	<i>4CH SS PS MDE BH+C</i>	FOV	<i>42.0</i>
SCAN TIMING		Slice Thickness	<i>8.0</i>
Flip Angle	<i>20</i>	Slice Spacing	<i>0.0</i>
Number of Echoes	<i>1</i>	ACQ TIMING	
TI	<i>600</i>	Freq	<i>156</i>
Receiver Bandwidth	<i>62.50</i>	Phase	<i>140</i>
IMAGE ENHANCE		Freq DIR	<i>R/L</i>
Filter Choice	<i>A</i>	NEX	<i>1.00</i>
GATING/TRIGGER		# of Acq. Before Pause	<i>4</i>
Auto Trigger Type	<i>Off</i>	Phase FOV	<i>0.90</i>
Trigger Type	<i>1</i>	Auto Shim	<i>Auto</i>
Minimum Trigger Delay	<i>2</i>	Phase Correction	<i>No</i>
Cardiac Phase	<i>1</i>	FMRI	
Cardiac Slices	<i>1</i>	PSD Trigger	<i>Internal</i>
MULTI-PHASE		View Order	<i>Bottom/Up</i>
Seperate Series	<i>0</i>	# of Repetitions REST	<i>0</i>
Mask Phase	<i>0</i>	# of Repetitions ACTIVE	<i>0</i>
Mask Pause	<i>0</i>	SAT	
DIFFUSION		Tag Type	<i>None</i>
Recon All Images	<i>On</i>	TRICKS	
CINE		# of RR Intervals	<i>2</i>
# of Cardiac Phases to Reconstruct	<i>20</i>	Trigger Delay	<i>605</i>
		Pause On/Off	<i>On</i>
		Auto Subtract	<i>0</i>
		Auto SCIC	<i>Off</i>
		CONTRAST	
		Contrast Yes/No	<i>Yes</i>

4CH SS PS MDE BH+C

4CH SS PS MDE BH+C

Protocol: adult_chest_CARDIAC Cyst

PATIENT POSITION		IMAGING PARAMETERS	
Patient Entry	<i>Feet First</i>	Imaging Mode	<i>2D</i>
Patient Position	<i>Supine</i>	Pulse Sequence	<i>FSE-XL</i>
Coil Configuration	<i>Body</i>	Imaging Options	<i>Gat, Seq, EDR, Fast, ZIP512, BSP, Asset</i>
Plane	<i>OBLIQUE</i>	SCAN RANGE	
Series Description	<i>+C T1 Double IR</i>	FOV	<i>36.0</i>
SCAN TIMING		Slice Thickness	<i>8.0</i>
Flip Angle	<i>107</i>	Slice Spacing	<i>0.0</i>
TE	<i>21.0</i>	ACQ TIMING	
Number of Echoes	<i>1</i>	Freq	<i>224</i>
Echo Train Length	<i>9</i>	Phase	<i>224</i>
Blood Suppression TI	<i>418</i>	Freq DIR	<i>Unswap</i>
Receiver Bandwidth	<i>62.50</i>	Fat Shift DIR	<i>Normal</i>
IMAGE ENHANCE		NEX	<i>1.00</i>
Filter Choice	<i>None</i>	Phase FOV	<i>0.90</i>
GATING/TRIGGER		Auto Shim	<i>Auto</i>
Auto Trigger Type	<i>On</i>	Phase Correction	<i>No</i>
Trigger Type	<i>0</i>	USER CVS	
Minimum Trigger Delay	<i>4</i>	User CV14	<i>3.33</i>
Cardiac Phase	<i>1</i>	User CV22	<i>1.00</i>
Cardiac Slices	<i>1</i>	MULTI-PHASE	
FMRI		Seperate Series	<i>0</i>
PSD Trigger	<i>Internal</i>	Mask Phase	<i>0</i>
View Order	<i>Bottom/Up</i>	Mask Pause	<i>0</i>
# of Repetitions REST	<i>0</i>	DIFFUSION	
# of Repetitions ACTIVE	<i>0</i>	Recon All Images	<i>On</i>
SAT		CONTRAST	
Tag Type	<i>None</i>	Contrast Yes/No	<i>No</i>
TRICKS			
# of RR Intervals	<i>1</i>		
Trigger Delay	<i>674</i>		
Pause On/Off	<i>On</i>		
Auto Subtract	<i>0</i>		
Auto SCIC	<i>2</i>		

+C T1 Double IR

+C T1 Double IR

OTHERS

Protocol Notes

IMPORTANT TIPS:
-Make sure that Trigger Delay is set to Diastolic from the pull down menu, as cardiac motion is reduced.
- change CV14 from 3.33 (default) to 1.25-1.5 if blood signal is not properly nulled.
- if Black Blood imaging is performed after contrast injection, BSP TI needs to be adjusted manually.
- Use always Shim Volume box to cover only the heart.
- Use Localized TG under Shim Volume to improve IQ.

Protocol: adult_chest_CARDIAC Cyst

PATIENT POSITION		IMAGING PARAMETERS	
Patient Entry	<i>Feet First</i>	Imaging Mode	<i>2D</i>
Patient Position	<i>Supine</i>	Pulse Sequence	<i>SPGR</i>
Coil Configuration	<i>Body</i>	Imaging Options	<i>Gat, EDR, Fast, PS, Asset, IrP</i>
Plane	<i>OBLIQUE</i>	SCAN RANGE	
Series Description	<i>SA SS PS MDE BH</i>	FOV	<i>40.0</i>
SCAN TIMING		Slice Thickness	<i>8.0</i>
Flip Angle	<i>20</i>	Slice Spacing	<i>0.0</i>
Number of Echoes	<i>1</i>	ACQ TIMING	
TI	<i>305</i>	Freq	<i>200</i>
Receiver Bandwidth	<i>62.50</i>	Phase	<i>200</i>
IMAGE ENHANCE		Freq DIR	<i>S/I</i>
Filter Choice	<i>A</i>	NEX	<i>1.00</i>
GATING/TRIGGER		# of Acq. Before Pause	<i>4</i>
Auto Trigger Type	<i>Off</i>	Phase FOV	<i>0.80</i>
Trigger Type	<i>1</i>	Auto Shim	<i>Auto</i>
Minimum Trigger Delay	<i>2</i>	Phase Correction	<i>No</i>
Cardiac Phase	<i>1</i>	FMRI	
Cardiac Slices	<i>1</i>	PSD Trigger	<i>Internal</i>
MULTI-PHASE		View Order	<i>Bottom/Up</i>
Seperate Series	<i>0</i>	# of Repetitions REST	<i>0</i>
Mask Phase	<i>0</i>	# of Repetitions ACTIVE	<i>0</i>
Mask Pause	<i>0</i>	SAT	
DIFFUSION		Tag Type	<i>None</i>
Recon All Images	<i>On</i>	TRICKS	
CINE		# of RR Intervals	<i>2</i>
# of Cardiac Phases to Reconstruct	<i>20</i>	Trigger Delay	<i>310</i>
OTHERS		Pause On/Off	<i>On</i>
Protocol Notes	<i>SCAN IS LINKED TO SHORT AXIS. REMOVE SLICES FROM THE BASE OF HEART. ONLY NEED TO INCLUDE MYOCARDIUM. START FIRST SLICE AT MITRAL VALVE</i>	Auto Subtract	<i>0</i>
		Auto SCIC	<i>Off</i>
		CONTRAST	
		Contrast Yes/No	<i>Yes</i>

SA SS PS MDE BH

SA SS PS MDE BH

Protocol: adult_chest_CARDIAC Cyst

2 CH SS PS MDE SPGR	PATIENT POSITION		IMAGING PARAMETERS	
	Patient Entry	<i>Feet First</i>	Imaging Mode	<i>2D</i>
	Patient Position	<i>Supine</i>	Pulse Sequence	<i>SPGR</i>
	Coil Configuration	<i>Body</i>	Imaging Options	<i>Gat, EDR, Fast, PS, Asset, IrP</i>
	Plane	<i>OBLIQUE</i>	SCAN RANGE	
	Series Description	<i>2 CH SS PS MDE SPGR</i>	FOV	<i>36.0</i>
	SCAN TIMING		Slice Thickness	<i>8.0</i>
	Flip Angle	<i>20</i>	Slice Spacing	<i>0.0</i>
	Number of Echoes	<i>1</i>	ACQ TIMING	
	TI	<i>225</i>	Freq	<i>156</i>
	Receiver Bandwidth	<i>62.50</i>	Phase	<i>140</i>
	IMAGE ENHANCE		Freq DIR	<i>S/I</i>
	Filter Choice	<i>A</i>	NEX	<i>1.00</i>
	GATING/TRIGGER		# of Acq. Before Pause	<i>4</i>
	Auto Trigger Type	<i>Off</i>	Phase FOV	<i>0.80</i>
	Trigger Type	<i>1</i>	Auto Shim	<i>Auto</i>
	Minimum Trigger Delay	<i>2</i>	Phase Correction	<i>No</i>
	Cardiac Phase	<i>1</i>	FMRI	
	Cardiac Slices	<i>1</i>	PSD Trigger	<i>Internal</i>
	MULTI-PHASE		View Order	<i>Bottom/Up</i>
Seperate Series	<i>0</i>	# of Repetitions REST	<i>0</i>	
Mask Phase	<i>0</i>	# of Repetitions ACTIVE	<i>0</i>	
Mask Pause	<i>0</i>	SAT		
DIFFUSION		Tag Type	<i>None</i>	
Recon All Images	<i>On</i>	TRICKS		
CINE		# of RR Intervals	<i>2</i>	
# of Cardiac Phases to Reconstruct	<i>20</i>	Trigger Delay	<i>230</i>	
		Pause On/Off	<i>On</i>	
		Auto Subtract	<i>0</i>	
		Auto SCIC	<i>Off</i>	
		CONTRAST		
		Contrast Yes/No	<i>Yes</i>	

2 CH SS PS MDE SPGR

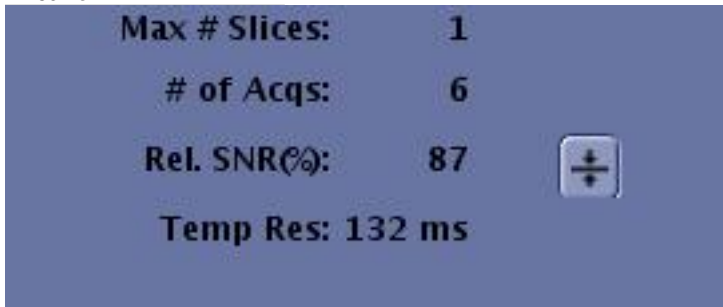
OTHERS

Protocol Notes

IMPORTANT TIPS:
- When scanning PSMDE, # RR interval for CINE IR must match #RR interval for PSMDE.
- For optimal image quality, set the Trigger Delay to Diastolic or type in a value manually.



- Increase TI by 20-25ms after every 5min to account for wash-out over time.
- Ensure Temp Res is <200ms. For HR>100BPM, Temp Res should be <160ms.



Protocol: adult_chest_CARDIAC Cyst

4CH SS PS MDE SPGR	PATIENT POSITION		IMAGING PARAMETERS	
	Patient Entry	<i>Feet First</i>	Imaging Mode	<i>2D</i>
	Patient Position	<i>Supine</i>	Pulse Sequence	<i>SPGR</i>
	Coil Configuration	<i>Body</i>	Imaging Options	<i>Gat, EDR, Fast, PS, Asset, IrP</i>
	Plane	<i>OBLIQUE</i>	SCAN RANGE	
	Series Description	<i>4CH SS PS MDE SPGR</i>	FOV	<i>42.0</i>
	SCAN TIMING		Slice Thickness	<i>8.0</i>
	Flip Angle	<i>20</i>	Slice Spacing	<i>0.0</i>
	Number of Echoes	<i>1</i>	ACQ TIMING	
	TI	<i>225</i>	Freq	<i>156</i>
	Receiver Bandwidth	<i>62.50</i>	Phase	<i>140</i>
	IMAGE ENHANCE		Freq DIR	<i>R/L</i>
	Filter Choice	<i>A</i>	NEX	<i>1.00</i>
	GATING/TRIGGER		# of Acq. Before Pause	<i>4</i>
	Auto Trigger Type	<i>Off</i>	Phase FOV	<i>0.90</i>
	Trigger Type	<i>1</i>	Auto Shim	<i>Auto</i>
	Minimum Trigger Delay	<i>2</i>	Phase Correction	<i>No</i>
	Cardiac Phase	<i>1</i>	FMRI	
	Cardiac Slices	<i>1</i>	PSD Trigger	<i>Internal</i>
	MULTI-PHASE		View Order	<i>Bottom/Up</i>
Seperate Series	<i>0</i>	# of Repetitions REST	<i>0</i>	
Mask Phase	<i>0</i>	# of Repetitions ACTIVE	<i>0</i>	
Mask Pause	<i>0</i>	SAT		
DIFFUSION		Tag Type	<i>None</i>	
Recon All Images	<i>On</i>	TRICKS		
CINE		# of RR Intervals	<i>2</i>	
# of Cardiac Phases to Reconstruct	<i>20</i>	Trigger Delay	<i>230</i>	
		Pause On/Off	<i>On</i>	
		Auto Subtract	<i>0</i>	
		Auto SCIC	<i>Off</i>	
		CONTRAST		
		Contrast Yes/No	<i>Yes</i>	

4CH SS PS MDE SPGR

Protocol: adult_chest_CARDIAC Cyst

OTHERS

Protocol Notes

IMPORTANT TIPS:
- When scanning PSMDE, # RR interval for CINE IR must match #RR interval for PSMDE.
- For optimal image quality, set the Trigger Delay to Diastolic or type in a value manually.



- Increase T1 by 20-25ms after every 5min to account for wash-out over time.
- Ensure Temp Res is <200ms. For HR>100BPM, Temp Res should be <160ms.

