

Protocol: adult\_head\_BRAIN WO

PATIENT POSITION	
Patient Entry	Head First
Patient Position	Supine
Coil Configuration	HNS by GE (PosteriorHead, Face)
Plane	3-PLANE
Series Description	LOC
SCAN TIMING	
Number of Echoes	1
IMAGE ENHANCE	
Filter Choice	None
GATING/TRIGGER	
Auto Trigger Type	Off
MULTI-PHASE	
Seperate Series	0
Mask Phase	0
Mask Pause	0
DIFFUSION	
Recon All Images	On
CONTRAST	
Contrast Yes/No	No

IMAGING PARAMETERS	
Imaging Mode	2D
Pulse Sequence	Gradient Echo
Imaging Options	Seq, Fast
SCAN RANGE	
FOV	30.0
Slice Thickness	5.0
Slice Spacing	5.0
ACQ TIMING	
Freq	256
Phase	128
Freq DIR	Unswap
NEX	1.00
Phase FOV	1.00
Auto Shim	Auto
Phase Correction	No
FMRI	
PSD Trigger	Internal
Slice Order	Interleaved
View Order	Bottom/Up
# of Repetitions REST	0
# of Repetitions ACTIVE	0
SAT	
Tag Type	None
TRICKS	
Pause On/Off	On
Auto Subtract	0
Auto SCIC	Off

LOC

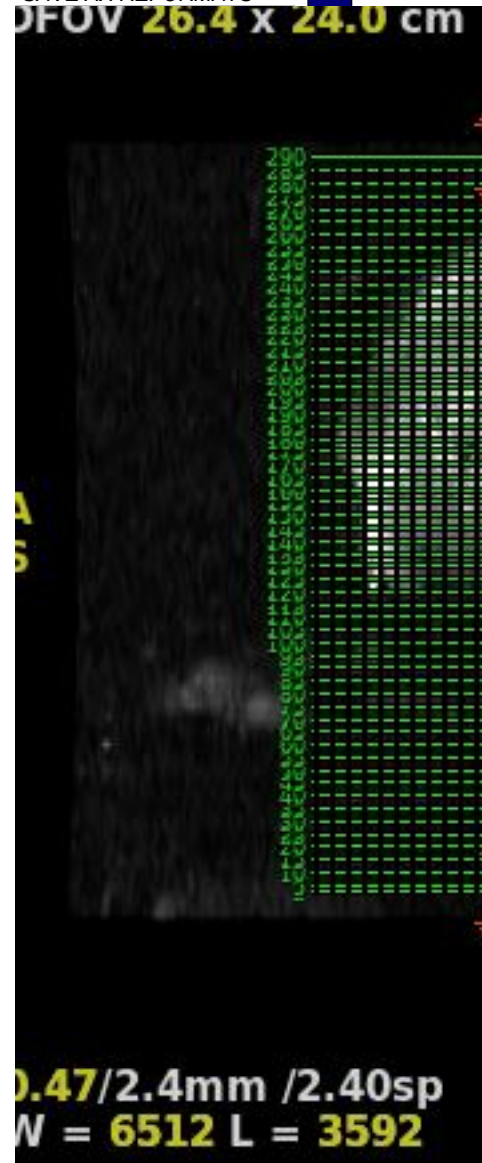
LOC

---

OTHERS

Protocol Notes

DOWNLOAD INTO  
REFORMAT/MIP AND SET  
UP AXIAL REFORMATS,  
10MM THICK AND  
RENDER MODE MIN IP,  
SAVE AX REFORMATS





Protocol: adult\_head\_BRAIN WO

PATIENT POSITION		IMAGING PARAMETERS	
Patient Entry	Head First	Imaging Mode	2D
Patient Position	Supine	Pulse Sequence	Spin Echo
Coil Configuration	HNS by GE (PosteriorHead, Face)	Imaging Options	EPI, DIFF, Asset
Plane	AXIAL	<b>SCAN RANGE</b>	
Series Description	AX DWI	FOV	24.0
<b>SCAN TIMING</b>		Slice Thickness	5.0
TE	Minimum	Slice Spacing	1.0
Number of Echoes	1	<b>ACQ TIMING</b>	
TR	6188.0	Freq	128
Number of Shots	1	Phase	160
<b>IMAGE ENHANCE</b>		Freq DIR	R/L
Filter Choice	None	Phase FOV	1.00
<b>GATING/TRIGGER</b>		Auto Shim	Auto
Auto Trigger Type	Off	Phase Correction	Yes
<b>FMRI</b>		<b>USER CVS</b>	
PSD Trigger	Internal	User CV0	1.00
Slice Order	Interleaved	User CV1	1.00
View Order	Bottom/Up	User CV5	1.00
# of Repetitions REST	0	User CV7	1.00
# of Repetitions ACTIVE	0	User CV17	1.00
<b>SAT</b>		TR Min	4000.0
Tag Type	None	TR Max	8000.0
<b>TRICKS</b>		<b>MULTI-PHASE</b>	
Pause On/Off	On	Seperate Series	0
Auto Subtract	0	Mask Phase	0
Auto SCIC	2	Mask Pause	0
		<b>DIFFUSION</b>	
		Optimized TE	Yes
		Diffusion Directions	All
		Number of Diffusion Directions	3
		Number of T2 Images	1
		Dual Spin Echo	Off
		Recon All Images	On
		<b>CONTRAST</b>	
		Contrast Yes/No	No

AX DWI

AX DWI

Protocol: adult\_head\_BRAIN WO

AX 3D BRAVO	<b>PATIENT POSITION</b>		<b>IMAGING PARAMETERS</b>	
	Patient Entry	Head First	Imaging Mode	3D
	Patient Position	Supine	Pulse Sequence	BRAVO
	Coil Configuration	HD 8Ch High Res Brain Array by Invivo	Imaging Options	EDR, Fast, ZIP2, ARC, IrP
	Plane	AXIAL	<b>SCAN RANGE</b>	
	Series Description	AX 3D BRAVO	FOV	25.6
	<b>SCAN TIMING</b>		Slice Thickness	2.0
	Flip Angle	12	Location per Slab	90
	Number of Echoes	1	Overlap Locations	0
	TI	450	<b>ACQ TIMING</b>	
	Receiver Bandwidth	31.25	Freq	256
	<b>IMAGE ENHANCE</b>		Phase	256
	Filter Choice	None	Freq DIR	A/P
	<b>GATING/TRIGGER</b>		NEX	1.00
	Auto Trigger Type	Off	Phase FOV	1.00
	<b>MULTI-PHASE</b>		Auto Shim	Auto
	Seperate Series	0	Phase Correction	No
	Trigger Delay without AV	0	<b>FMRI</b>	
	Mask Phase	0	PSD Trigger	Internal
	Mask Pause	0	Slice Order	Interleaved
	<b>DIFFUSION</b>		View Order	Bottom/Up
	Recon All Images	On	# of Repetitions REST	0
	<b>CONTRAST</b>		# of Repetitions ACTIVE	0
	Contrast Yes/No	No	<b>SAT</b>	
			Tag Type	None
		<b>TRICKS</b>		
		Pause On/Off	On	
		Auto Subtract	0	
		Auto SCIC	Off	
		<b>OTHERS</b>		
		Protocol Notes	Do not use IR prepared with post contrast series. IR Prepared defaults to an on state. For optimum image quality, it is critical that IR prep remain on for non-contrast enhanced series.	

AX 3D BRAVO

Protocol: adult\_head\_BRAIN WO

PATIENT POSITION		IMAGING PARAMETERS	
Patient Entry	Head First	Imaging Mode	2D
Patient Position	Supine	Pulse Sequence	FSE-XL
Coil Configuration	HNS by GE (PosteriorHead, Face)	Imaging Options	FC, EDR, TRF, Fast, ZIP512, MRF, T2flair
Plane	OBLIQUE	<b>SCAN RANGE</b>	
Series Description	Ax T2 FLAIR	FOV	24.0
<b>SCAN TIMING</b>		Slice Thickness	5.0
Flip Angle	160	Slice Spacing	1.0
TE	120.0	<b>ACQ TIMING</b>	
Number of Echoes	1	Freq	288
TR	9000.0	Phase	192
TI	2360	Freq DIR	A/P
Receiver Bandwidth	31.25	Fat Shift DIR	Normal (A)
<b>IMAGE ENHANCE</b>		NEX	1.00
Filter Choice	None	Auto Shim	Auto
<b>GATING/TRIGGER</b>		Phase Correction	Yes
Auto Trigger Type	Off	Flow Direction Compensation	Slice
<b>FMRI</b>		<b>USER CVS</b>	
PSD Trigger	Internal	User CV3	2.00
Slice Order	Interleaved	User CV11	1.00
View Order	Bottom/Up	User CV21	1.00
# of Repetitions REST	0	<b>MULTI-PHASE</b>	
# of Repetitions ACTIVE	0	Seperate Series	0
<b>SAT</b>		Mask Phase	0
SAT Location	S	Mask Pause	0
SAT Location	I	<b>DIFFUSION</b>	
Tag Type	None	Recon All Images	On
<b>TRICKS</b>		<b>CONTRAST</b>	
Pause On/Off	On	Contrast Yes/No	No
Auto Subtract	0		
Auto SCIC	2		

Ax T2 FLAIR

Ax T2 FLAIR

Protocol: adult\_head\_BRAIN WO

Ax T2 PROP	<b>PATIENT POSITION</b>		<b>IMAGING PARAMETERS</b>		Ax T2 PROP	
	Coil Configuration	HNS Head	Gradient Mode	NA		
	Plane	Oblique	<b>SCAN RANGE</b>			
	<b>SCAN TIMING</b>		FOV	24.0cm		
	Flip Angle	160.0Degrees	Slice Thickness	5.0mm		
	TE	81.6ms	Slice Spacing	1.0mm		
	TR	4.368s	<b>MRECHO</b>			
	Echo Train Length	24	Gating Disable	true		
	Receiver Bandwidth	62.5KHz				
	<b>ACQ TIMING</b>					
	Freq	320				
	Phase	40				
	Freq DIR	A/P				
	Fat Shift DIR	Normal (A)				
	NEX	2.0				
Phase FOV	24.0cm					



Protocol: adult\_head\_BRAIN WO

PATIENT POSITION		IMAGING PARAMETERS	
Patient Entry	Head First	Imaging Mode	2D
Patient Position	Supine	Pulse Sequence	Gradient Echo
Coil Configuration	HNS by GE (PosteriorHead, Face)	Imaging Options	EDR
Plane	OBLIQUE	SCAN RANGE	
Series Description	Ax T2* GRE	FOV	24.0
SCAN TIMING		Slice Thickness	5.0
Flip Angle	25	Slice Spacing	1.0
TE	15.0	ACQ TIMING	
Number of Echoes	1	Freq	288
TR	534.0	Phase	192
Receiver Bandwidth	19.23	Freq DIR	R/L
IMAGE ENHANCE		NEX	1.00
Filter Choice	None	Phase FOV	1.00
GATING/TRIGGER		Auto Shim	Auto
Auto Trigger Type	Off	Phase Correction	No
FMRI		USER CVS	
PSD Trigger	Internal	TR Min	200.0
Slice Order	Interleaved	TR Max	11000.0
View Order	Bottom/Up	MULTI-PHASE	
# of Repetitions REST	0	Seperate Series	0
# of Repetitions ACTIVE	0	Mask Phase	0
SAT		Mask Pause	0
Tag Type	None	DIFFUSION	
TRICKS		Recon All Images	On
Pause On/Off	On	CONTRAST	
Auto Subtract	0	Contrast Yes/No	No
Auto SCIC	2		

Ax T2\* GRE

Ax T2\* GRE