

McLeod Pavilion

Protocol: adult_lowerExtremities_DELTA FLOW NON CONTRAST RUNOFF

BOT LOC	PATIENT POSITION		IMAGING PARAMETERS		BOT LOC
	Patient Entry	<i>Feet First</i>	Imaging Mode	<i>2D</i>	
	Patient Position	<i>Supine</i>	Pulse Sequence	<i>Gradient Echo</i>	
	Coil Configuration	<i>AA</i>	Imaging Options	<i>Seq, Fast</i>	
	Plane	<i>3-PLANE</i>	SCAN RANGE		
	Series Description	<i>BOT LOC</i>	FOV	<i>46.0</i>	
	SCAN TIMING		Slice Thickness	<i>5.0</i>	
	Number of Echoes	<i>1</i>	Slice Spacing	<i>12.0</i>	
	IMAGE ENHANCE		ACQ TIMING		
	Filter Choice	<i>None</i>	Freq	<i>256</i>	
	GATING/TRIGGER		Phase	<i>128</i>	
	Auto Trigger Type	<i>Off</i>	Freq DIR	<i>Unswap</i>	
	MULTI-PHASE		NEX	<i>1.00</i>	
	Seperate Series	<i>0</i>	Phase FOV	<i>1.00</i>	
	Mask Phase	<i>0</i>	Auto Shim	<i>Auto</i>	
	Mask Pause	<i>0</i>	Phase Correction	<i>No</i>	
	DIFFUSION		FMRI		
	Recon All Images	<i>On</i>	PSD Trigger	<i>Internal</i>	
	CONTRAST		View Order	<i>Bottom/Up</i>	
	Contrast Yes/No	<i>No</i>	# of Repetitions REST	<i>0</i>	
		# of Repetitions ACTIVE	<i>0</i>		
		SAT			
		Tag Type	<i>None</i>		
		TRICKS			
		Pause On/Off	<i>On</i>		
		Auto Subtract	<i>0</i>		
		Auto SCIC	<i>Off</i>		
		OTHERS			
		Protocol Notes	<i>Offset for this station is pre programed with 10cm overlap. Do not use graphic Rx ***LOCALIZE AT THE ANKLE***</i>		

McLeod Pavilion

Protocol: adult_lowerExtremities_DELTA FLOW NON CONTRAST RUNOFF

BOT MID	PATIENT POSITION		IMAGING PARAMETERS		BOT MID
	Patient Entry	<i>Feet First</i>	Imaging Mode	<i>2D</i>	
	Patient Position	<i>Supine</i>	Pulse Sequence	<i>Gradient Echo</i>	
	Coil Configuration	<i>AA</i>	Imaging Options	<i>Seq, Fast</i>	
	Plane	<i>3-PLANE</i>	SCAN RANGE		
	Series Description	<i>BOT MID</i>	FOV	<i>46.0</i>	
	SCAN TIMING		Slice Thickness	<i>5.0</i>	
	Number of Echoes	<i>1</i>	Slice Spacing	<i>12.0</i>	
	IMAGE ENHANCE		ACQ TIMING		
	Filter Choice	<i>None</i>	Freq	<i>256</i>	
	GATING/TRIGGER		Phase	<i>128</i>	
	Auto Trigger Type	<i>Off</i>	Freq DIR	<i>Unswap</i>	
	MULTI-PHASE		NEX	<i>1.00</i>	
	Seperate Series	<i>0</i>	Phase FOV	<i>1.00</i>	
	Mask Phase	<i>0</i>	Auto Shim	<i>Auto</i>	
	Mask Pause	<i>0</i>	Phase Correction	<i>No</i>	
	DIFFUSION		FMRI		
	Recon All Images	<i>On</i>	PSD Trigger	<i>Internal</i>	
	CONTRAST		View Order	<i>Bottom/Up</i>	
	Contrast Yes/No	<i>No</i>	# of Repetitions REST	<i>0</i>	
		# of Repetitions ACTIVE	<i>0</i>		
		SAT			
		Tag Type	<i>None</i>		
		TRICKS			
		Pause On/Off	<i>On</i>		
		Auto Subtract	<i>0</i>		
		Auto SCIC	<i>Off</i>		
		OTHERS			
		Protocol Notes	<i>Offset for this station is pre programed with 10cm overlap. Do not use graphic Rx ***LOCALIZE AT THE ANKLE***</i>		

McLeod Pavilion

Protocol: adult_lowerExtremities_DELTA FLOW NON CONTRAST RUNOFF

BOT TOP	PATIENT POSITION		IMAGING PARAMETERS		BOT TOP
	Patient Entry	<i>Feet First</i>	Imaging Mode	<i>2D</i>	
	Patient Position	<i>Supine</i>	Pulse Sequence	<i>Gradient Echo</i>	
	Coil Configuration	<i>AA</i>	Imaging Options	<i>Seq, Fast</i>	
	Plane	<i>3-PLANE</i>	SCAN RANGE		
	Series Description	<i>BOT TOP</i>	FOV	<i>46.0</i>	
	SCAN TIMING		Slice Thickness	<i>5.0</i>	
	Number of Echoes	<i>1</i>	Slice Spacing	<i>12.0</i>	
	IMAGE ENHANCE		ACQ TIMING		
	Filter Choice	<i>None</i>	Freq	<i>256</i>	
	GATING/TRIGGER		Phase	<i>128</i>	
	Auto Trigger Type	<i>Off</i>	Freq DIR	<i>Unswap</i>	
	MULTI-PHASE		NEX	<i>1.00</i>	
	Seperate Series	<i>0</i>	Phase FOV	<i>1.00</i>	
	Mask Phase	<i>0</i>	Auto Shim	<i>Auto</i>	
	Mask Pause	<i>0</i>	Phase Correction	<i>No</i>	
	DIFFUSION		FMRI		
	Recon All Images	<i>On</i>	PSD Trigger	<i>Internal</i>	
	CONTRAST		View Order	<i>Bottom/Up</i>	
	Contrast Yes/No	<i>No</i>	# of Repetitions REST	<i>0</i>	
		# of Repetitions ACTIVE	<i>0</i>		
		SAT			
		Tag Type	<i>None</i>		
		TRICKS			
		Pause On/Off	<i>On</i>		
		Auto Subtract	<i>0</i>		
		Auto SCIC	<i>Off</i>		
		OTHERS			
		Protocol Notes	<i>Offset for this station is pre programed with 10cm overlap. Do not use graphic Rx ***LOCALIZE AT THE ANKLE***</i>		

McLeod Pavilion

Protocol: adult_lowerExtremities_DELTA FLOW NON CONTRAST RUNOFF

Cor SSFSE MPh	PATIENT POSITION		IMAGING PARAMETERS		Cor SSFSE MPh
	Patient Entry	Feet First	Imaging Mode	2D	
	Patient Position	Supine	Pulse Sequence	Spin Echo	
	Coil Configuration	AA	Imaging Options	Gat, Fast, MPh, ZIP512, SS	
	Plane	CORONAL	SCAN RANGE		
	Series Description	Cor SSFSE MPh	FOV	40.0	
	SCAN TIMING		Slice Thickness	150.0	
	TE	80.0	Slice Spacing	0.0	
	Number of Echoes	1	ACQ TIMING		
	Receiver Bandwidth	83.33	Freq	320	
	IMAGE ENHANCE		Phase	224	
	Filter Choice	None	Freq DIR	S/I	
	GATING/TRIGGER		Phase FOV	1.00	
	Auto Trigger Type	On	Auto Shim	Auto	
	Trigger Type	0	Phase Correction	No	
	Minimum Trigger Delay	2	USER CVS		
	Cardiac Phase	1	User CV2	240.00	
	Cardiac Slices	1	User CV13	1.00	
	FMRI		MULTI-PHASE		
	PSD Trigger	Internal	Slice per Location	10	
	View Order	Bottom/Up	Phase Acquisition Order	Sequential	
	# of Repetitions REST	0	Seperate Series	0	
	# of Repetitions ACTIVE	0	Inter-Delay	Recommend	
	SAT		Mask Phase	0	
	Tag Type	None	Mask Pause	0	
TRICKS		DIFFUSION			
# of RR Intervals	7	Recon All Images	On		
Trigger Delay	200	CONTRAST			
Pause On/Off	On	Contrast Yes/No	No		
Auto Subtract	11				
Auto SCIC	Off				
OTHERS					
Protocol Notes	<p>Tip: -For optimal image quality, cover all of the anatomy. If needed, you can use the max slice thickness. -If using ECG, it is recommended to use a 200ms Trigger Delay. ***SELECT IMAGE FROM SUBTRACTED SET FOR DIASTOLIC DELAY***</p>				

McLeod Pavilion

Protocol: adult_lowerExtremities_DELTA FLOW NON CONTRAST RUNOFF

<table border="1" style="width: 100%; border-collapse: collapse;"> <tr> <th colspan="2" style="background-color: #cccccc;">PATIENT POSITION</th> </tr> <tr> <td>Patient Entry</td> <td><i>Feet First</i></td> </tr> <tr> <td>Patient Position</td> <td><i>Supine</i></td> </tr> <tr> <td>Coil Configuration</td> <td><i>AA</i></td> </tr> <tr> <td>Plane</td> <td><i>CORONAL</i></td> </tr> <tr> <td>Series Description</td> <td><i>3D Delta Flow STN 3</i></td> </tr> <tr> <th colspan="2" style="background-color: #cccccc;">SCAN TIMING</th> </tr> <tr> <td>TE</td> <td><i>60.0</i></td> </tr> <tr> <td>Number of Echoes</td> <td><i>1</i></td> </tr> <tr> <td>TI</td> <td><i>208</i></td> </tr> <tr> <td>Receiver Bandwidth</td> <td><i>62.50</i></td> </tr> <tr> <th colspan="2" style="background-color: #cccccc;">IMAGE ENHANCE</th> </tr> <tr> <td>Filter Choice</td> <td><i>None</i></td> </tr> <tr> <th colspan="2" style="background-color: #cccccc;">GATING/TRIGGER</th> </tr> <tr> <td>Auto Trigger Type</td> <td><i>On</i></td> </tr> <tr> <td>Trigger Type</td> <td><i>0</i></td> </tr> <tr> <td>Minimum Trigger Delay</td> <td><i>2</i></td> </tr> <tr> <td>Cardiac Phase</td> <td><i>1</i></td> </tr> <tr> <td>Cardiac Slices</td> <td><i>1</i></td> </tr> <tr> <th colspan="2" style="background-color: #cccccc;">MULTI-PHASE</th> </tr> <tr> <td>Seperate Series</td> <td><i>0</i></td> </tr> <tr> <td>Inter-Delay</td> <td><i>Recommend</i></td> </tr> <tr> <td>Mask Phase</td> <td><i>0</i></td> </tr> <tr> <td>Mask Pause</td> <td><i>0</i></td> </tr> <tr> <th colspan="2" style="background-color: #cccccc;">DIFFUSION</th> </tr> <tr> <td>Recon All Images</td> <td><i>On</i></td> </tr> <tr> <th colspan="2" style="background-color: #cccccc;">CONTRAST</th> </tr> <tr> <td>Contrast Yes/No</td> <td><i>No</i></td> </tr> </table>	PATIENT POSITION		Patient Entry	<i>Feet First</i>	Patient Position	<i>Supine</i>	Coil Configuration	<i>AA</i>	Plane	<i>CORONAL</i>	Series Description	<i>3D Delta Flow STN 3</i>	SCAN TIMING		TE	<i>60.0</i>	Number of Echoes	<i>1</i>	TI	<i>208</i>	Receiver Bandwidth	<i>62.50</i>	IMAGE ENHANCE		Filter Choice	<i>None</i>	GATING/TRIGGER		Auto Trigger Type	<i>On</i>	Trigger Type	<i>0</i>	Minimum Trigger Delay	<i>2</i>	Cardiac Phase	<i>1</i>	Cardiac Slices	<i>1</i>	MULTI-PHASE		Seperate Series	<i>0</i>	Inter-Delay	<i>Recommend</i>	Mask Phase	<i>0</i>	Mask Pause	<i>0</i>	DIFFUSION		Recon All Images	<i>On</i>	CONTRAST		Contrast Yes/No	<i>No</i>	<table border="1" style="width: 100%; border-collapse: collapse;"> <tr> <th colspan="2" style="background-color: #cccccc;">IMAGING PARAMETERS</th> </tr> <tr> <td>Imaging Mode</td> <td><i>3D</i></td> </tr> <tr> <td>Pulse Sequence</td> <td><i>Inhance DeltaFlow</i></td> </tr> <tr> <td>Imaging Options</td> <td><i>FC, Gat, EDR, Fast, ZIP512, ZIP2, Asset, IrP</i></td> </tr> <tr> <th colspan="2" style="background-color: #cccccc;">SCAN RANGE</th> </tr> <tr> <td>FOV</td> <td><i>46.0</i></td> </tr> <tr> <td>Slice Thickness</td> <td><i>2.4</i></td> </tr> <tr> <td>Location per Slab</td> <td><i>44</i></td> </tr> <tr> <td>Overlap Locations</td> <td><i>0</i></td> </tr> <tr> <th colspan="2" style="background-color: #cccccc;">ACQ TIMING</th> </tr> <tr> <td>Freq</td> <td><i>320</i></td> </tr> <tr> <td>Phase</td> <td><i>224</i></td> </tr> <tr> <td>Freq DIR</td> <td><i>S/I</i></td> </tr> <tr> <td>Phase FOV</td> <td><i>0.90</i></td> </tr> <tr> <td>Auto Shim</td> <td><i>Auto</i></td> </tr> <tr> <td>Phase Correction</td> <td><i>No</i></td> </tr> <tr> <td>Flow Direction Compensation</td> <td><i>Freq</i></td> </tr> <tr> <th colspan="2" style="background-color: #cccccc;">FMRI</th> </tr> <tr> <td>PSD Trigger</td> <td><i>Internal</i></td> </tr> <tr> <td>View Order</td> <td><i>Bottom/Up</i></td> </tr> <tr> <td># of Repetitions REST</td> <td><i>0</i></td> </tr> <tr> <td># of Repetitions ACTIVE</td> <td><i>0</i></td> </tr> <tr> <th colspan="2" style="background-color: #cccccc;">SAT</th> </tr> <tr> <td>Tag Type</td> <td><i>None</i></td> </tr> <tr> <th colspan="2" style="background-color: #cccccc;">TRICKS</th> </tr> <tr> <td># of RR Intervals</td> <td><i>3</i></td> </tr> <tr> <td>Trigger Delay</td> <td><i>750</i></td> </tr> <tr> <td>Pause On/Off</td> <td><i>On</i></td> </tr> <tr> <td>Auto Subtract</td> <td><i>0</i></td> </tr> <tr> <td>Auto SCIC</td> <td><i>Off</i></td> </tr> <tr> <th colspan="2" style="background-color: #cccccc;">OTHERS</th> </tr> <tr> <td>Protocol Notes</td> <td> <p><i>Tips:</i></p> <ul style="list-style-type: none"> <i>-This protocol is recommended for the use of tibial arteries</i> <i>-If ASSET is not selected, ETL option will be available.</i> <i>-For optimal image quality, use a lower ETL (60-70)</i> <i>-Use the trigger delay from the optimal phase in the Cor SSFSE MPh to set the Diastolic Trigger Delay in the Cardiac Tab.</i> <i>-Use the recommended trigger delay for the Systolic Trigger Delay in the the Cardiac Tab.</i> <i>-For optimal image quality, it is recommended to cover all of the anatomy.</i> </td> </tr> </table>	IMAGING PARAMETERS		Imaging Mode	<i>3D</i>	Pulse Sequence	<i>Inhance DeltaFlow</i>	Imaging Options	<i>FC, Gat, EDR, Fast, ZIP512, ZIP2, Asset, IrP</i>	SCAN RANGE		FOV	<i>46.0</i>	Slice Thickness	<i>2.4</i>	Location per Slab	<i>44</i>	Overlap Locations	<i>0</i>	ACQ TIMING		Freq	<i>320</i>	Phase	<i>224</i>	Freq DIR	<i>S/I</i>	Phase FOV	<i>0.90</i>	Auto Shim	<i>Auto</i>	Phase Correction	<i>No</i>	Flow Direction Compensation	<i>Freq</i>	FMRI		PSD Trigger	<i>Internal</i>	View Order	<i>Bottom/Up</i>	# of Repetitions REST	<i>0</i>	# of Repetitions ACTIVE	<i>0</i>	SAT		Tag Type	<i>None</i>	TRICKS		# of RR Intervals	<i>3</i>	Trigger Delay	<i>750</i>	Pause On/Off	<i>On</i>	Auto Subtract	<i>0</i>	Auto SCIC	<i>Off</i>	OTHERS		Protocol Notes	<p><i>Tips:</i></p> <ul style="list-style-type: none"> <i>-This protocol is recommended for the use of tibial arteries</i> <i>-If ASSET is not selected, ETL option will be available.</i> <i>-For optimal image quality, use a lower ETL (60-70)</i> <i>-Use the trigger delay from the optimal phase in the Cor SSFSE MPh to set the Diastolic Trigger Delay in the Cardiac Tab.</i> <i>-Use the recommended trigger delay for the Systolic Trigger Delay in the the Cardiac Tab.</i> <i>-For optimal image quality, it is recommended to cover all of the anatomy.</i>
PATIENT POSITION																																																																																																																									
Patient Entry	<i>Feet First</i>																																																																																																																								
Patient Position	<i>Supine</i>																																																																																																																								
Coil Configuration	<i>AA</i>																																																																																																																								
Plane	<i>CORONAL</i>																																																																																																																								
Series Description	<i>3D Delta Flow STN 3</i>																																																																																																																								
SCAN TIMING																																																																																																																									
TE	<i>60.0</i>																																																																																																																								
Number of Echoes	<i>1</i>																																																																																																																								
TI	<i>208</i>																																																																																																																								
Receiver Bandwidth	<i>62.50</i>																																																																																																																								
IMAGE ENHANCE																																																																																																																									
Filter Choice	<i>None</i>																																																																																																																								
GATING/TRIGGER																																																																																																																									
Auto Trigger Type	<i>On</i>																																																																																																																								
Trigger Type	<i>0</i>																																																																																																																								
Minimum Trigger Delay	<i>2</i>																																																																																																																								
Cardiac Phase	<i>1</i>																																																																																																																								
Cardiac Slices	<i>1</i>																																																																																																																								
MULTI-PHASE																																																																																																																									
Seperate Series	<i>0</i>																																																																																																																								
Inter-Delay	<i>Recommend</i>																																																																																																																								
Mask Phase	<i>0</i>																																																																																																																								
Mask Pause	<i>0</i>																																																																																																																								
DIFFUSION																																																																																																																									
Recon All Images	<i>On</i>																																																																																																																								
CONTRAST																																																																																																																									
Contrast Yes/No	<i>No</i>																																																																																																																								
IMAGING PARAMETERS																																																																																																																									
Imaging Mode	<i>3D</i>																																																																																																																								
Pulse Sequence	<i>Inhance DeltaFlow</i>																																																																																																																								
Imaging Options	<i>FC, Gat, EDR, Fast, ZIP512, ZIP2, Asset, IrP</i>																																																																																																																								
SCAN RANGE																																																																																																																									
FOV	<i>46.0</i>																																																																																																																								
Slice Thickness	<i>2.4</i>																																																																																																																								
Location per Slab	<i>44</i>																																																																																																																								
Overlap Locations	<i>0</i>																																																																																																																								
ACQ TIMING																																																																																																																									
Freq	<i>320</i>																																																																																																																								
Phase	<i>224</i>																																																																																																																								
Freq DIR	<i>S/I</i>																																																																																																																								
Phase FOV	<i>0.90</i>																																																																																																																								
Auto Shim	<i>Auto</i>																																																																																																																								
Phase Correction	<i>No</i>																																																																																																																								
Flow Direction Compensation	<i>Freq</i>																																																																																																																								
FMRI																																																																																																																									
PSD Trigger	<i>Internal</i>																																																																																																																								
View Order	<i>Bottom/Up</i>																																																																																																																								
# of Repetitions REST	<i>0</i>																																																																																																																								
# of Repetitions ACTIVE	<i>0</i>																																																																																																																								
SAT																																																																																																																									
Tag Type	<i>None</i>																																																																																																																								
TRICKS																																																																																																																									
# of RR Intervals	<i>3</i>																																																																																																																								
Trigger Delay	<i>750</i>																																																																																																																								
Pause On/Off	<i>On</i>																																																																																																																								
Auto Subtract	<i>0</i>																																																																																																																								
Auto SCIC	<i>Off</i>																																																																																																																								
OTHERS																																																																																																																									
Protocol Notes	<p><i>Tips:</i></p> <ul style="list-style-type: none"> <i>-This protocol is recommended for the use of tibial arteries</i> <i>-If ASSET is not selected, ETL option will be available.</i> <i>-For optimal image quality, use a lower ETL (60-70)</i> <i>-Use the trigger delay from the optimal phase in the Cor SSFSE MPh to set the Diastolic Trigger Delay in the Cardiac Tab.</i> <i>-Use the recommended trigger delay for the Systolic Trigger Delay in the the Cardiac Tab.</i> <i>-For optimal image quality, it is recommended to cover all of the anatomy.</i> 																																																																																																																								

3D Delta Flow STN 3

3D Delta Flow STN 3

McLeod Pavilion

Protocol: adult_lowerExtremities_DELTA FLOW NON CONTRAST RUNOFF

PATIENT POSITION	
Patient Entry	Feet First
Patient Position	Supine
Coil Configuration	Body
Plane	CORONAL
Series Description	3D Delta Flow STN 2

SCAN TIMING	
TE	60.0
Number of Echoes	1
TI	208
Receiver Bandwidth	62.50

IMAGE ENHANCE	
Filter Choice	None

GATING/TRIGGER	
Auto Trigger Type	Off
Trigger Type	0
Minimum Trigger Delay	2
Phase Select	Single Phase
Cardiac Phase	1
Cardiac Slices	1

MULTI-PHASE	
Seperate Series	0
Inter-Delay	Even Space
Mask Phase	0
Mask Pause	0

DIFFUSION	
Recon All Images	On

CONTRAST	
Contrast Yes/No	No

IMAGING PARAMETERS	
Imaging Mode	3D
Pulse Sequence	Inhance DeltaFlow
Imaging Options	FC, Gat, EDR, Fast, ZIP512, ZIP2, Asset, IrP

SCAN RANGE	
FOV	46.0
Slice Thickness	2.8
Location per Slab	58
Overlap Locations	0

ACQ TIMING	
Freq	320
Phase	224
Freq DIR	S/I
Phase FOV	1.00
Auto Shim	Auto
Phase Correction	No
Flow Direction Compensation	Freq

FMRI	
PSD Trigger	Internal
View Order	Bottom/Up
# of Repetitions REST	0
# of Repetitions ACTIVE	0

SAT	
SAT Location	P
Tag Type	None

TRICKS	
# of RR Intervals	3
Trigger Delay	750
Pause On/Off	On
Auto Subtract	0
Auto SCIC	Off

3D Delta Flow STN 2

3D Delta Flow STN 2

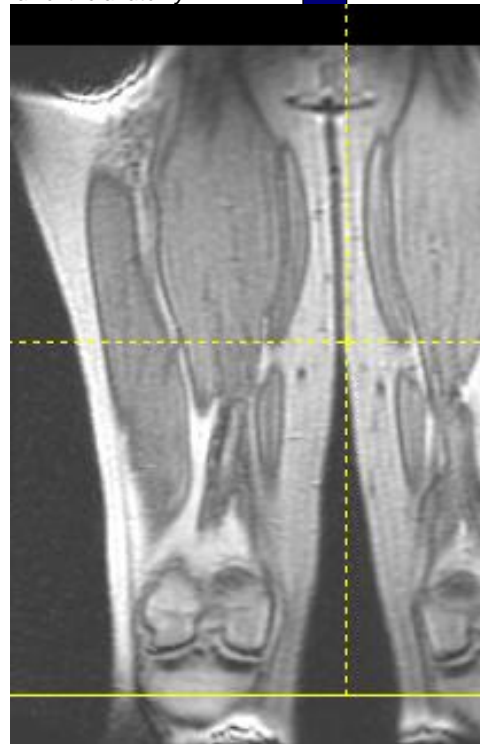
OTHERS

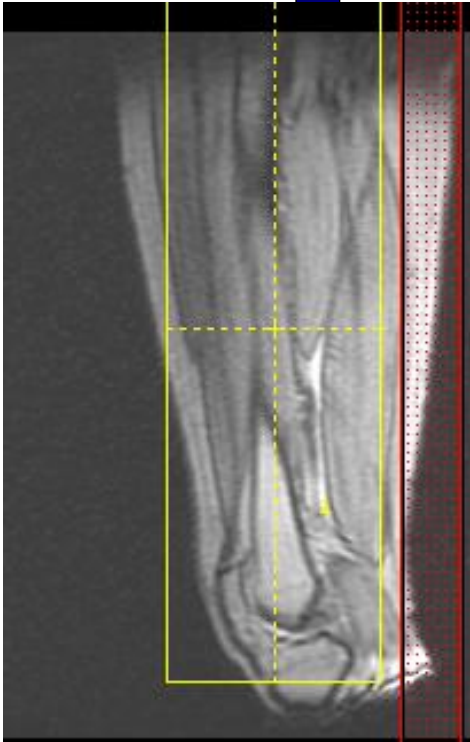
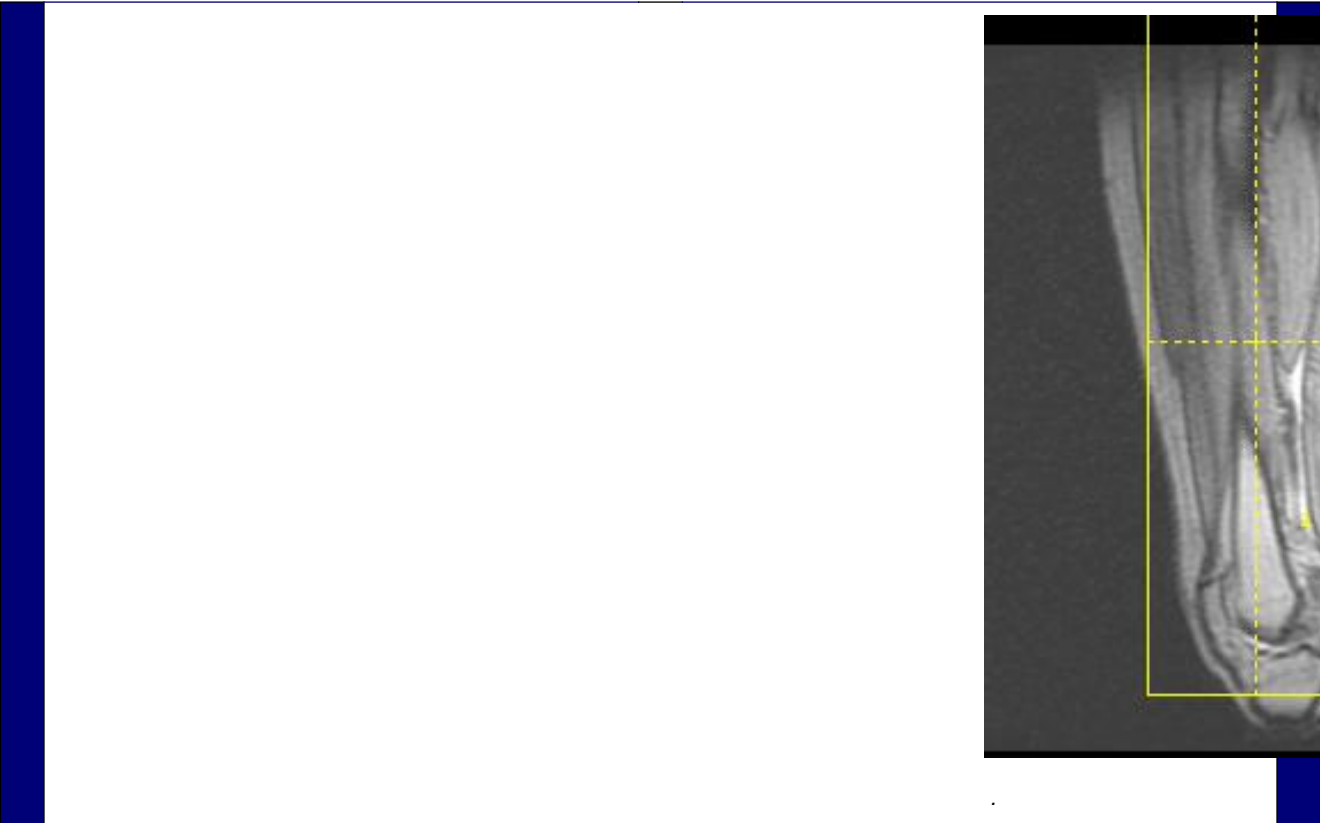
Protocol Notes

*REPOSITION COIL ON THE PATIENT, SET CENTER. *** DO NOT RELANDMARK, ADVANCE TO SCAN****

Tips:

- Place posterior sat bands over subcutaneous fat to help reduce wrap artifacts.*
- If ASSET is not selected, ETL option will be available.*
- For optimal image quality, use a lower ETL (60-70)*
- Use the trigger delay from the optimal phase in the Cor SSFSE MPh to set the Diastolic Trigger Delay in the Cardiac Tab.*
- Use the recommended trigger delay for the Systolic Trigger Delay in the the Cardiac Tab.*
- For optimal image quality, it is recommended to cover all of the anatomy*





McLeod Pavilion

Protocol: adult_lowerExtremities_DELTA FLOW NON CONTRAST RUNOFF

PATIENT POSITION	
Patient Entry	Feet First
Patient Position	Supine
Coil Configuration	GE T/R body coil
Plane	CORONAL
Series Description	3D Delta Flow STN 1 (Superior)

SCAN TIMING	
TE	60.0
Number of Echoes	1
TI	208
Echo Train Length	80
Receiver Bandwidth	62.50

IMAGE ENHANCE	
Filter Choice	None

GATING/TRIGGER	
Auto Trigger Type	On
Trigger Type	0
Minimum Trigger Delay	2
Phase Select	Single Phase
Cardiac Phase	1
Cardiac Slices	1

MULTI-PHASE	
Seperate Series	0
Inter-Delay	Even Space
Mask Phase	0
Mask Pause	0

DIFFUSION	
Recon All Images	On

CONTRAST	
Contrast Yes/No	No

IMAGING PARAMETERS	
Imaging Mode	3D
Pulse Sequence	Inhance DeltaFlow
Imaging Options	FC, Gat, EDR, Fast, ZIP512, ZIP2, IrP

SCAN RANGE	
FOV	46.0
Slice Thickness	3.0
Location per Slab	50
Overlap Locations	0

ACQ TIMING	
Freq	320
Phase	224
Freq DIR	S/I
Phase FOV	1.00
Auto Shim	Auto
Phase Correction	No
Flow Direction Compensation	Freq

FMRI	
PSD Trigger	Internal
View Order	Bottom/Up
# of Repetitions REST	0
# of Repetitions ACTIVE	0

SAT	
SAT Location	P
Tag Type	None

TRICKS	
# of RR Intervals	3
Trigger Delay	750
Pause On/Off	On
Auto Subtract	0
Auto SCIC	Off

3D Delta Flow STN 1 (Superior)

3D Delta Flow STN 1 (Superior)

Protocol: adult_lowerExtremities_DELTA FLOW NON CONTRAST RUNOFF

OTHERS

Protocol Notes

*REPOSITION COIL ON THE PATIENT, SET CENTER. *** DO NOT RELANDMARK, ADVANCE TO SCAN****

Tips:

- Place posterior sat bands over subcutaneous fat to help reduce wrap artifacts.*
- If ASSET is not selected, ETL option will be available.*
- For optimal image quality, use a lower ETL (60-70)*
- Use the trigger delay from the optimal phase in the Cor SSFSE MPh to set the Diastolic Trigger Delay in the Cardiac Tab.*
- Use the recommended trigger delay for the Systolic Trigger Delay in the the Cardiac Tab.*
- For optimal image quality, it is recommended to cover all of the anatomy.*

