

McLeod Pavilion

Protocol: adult_pelvis_Prostate

3-Plane Localizer	PATIENT POSITION		IMAGING PARAMETERS	
	Patient Entry	<i>Feet First</i>	Imaging Mode	<i>2D</i>
	Patient Position	<i>Supine</i>	Pulse Sequence	<i>Spin Echo</i>
	Coil Configuration	<i>Body</i>	Imaging Options	<i>Seq, EDR, TRF, Fast, SS, FR, ARC</i>
	Plane	<i>3-PLANE</i>	SCAN RANGE	
	Series Description	<i>3-Plane Localizer</i>	FOV	<i>42.0</i>
	SCAN TIMING		Slice Thickness	<i>8.0</i>
	TE	<i>80.0</i>	Slice Spacing	<i>5.0</i>
	Number of Echoes	<i>1</i>	ACQ TIMING	
	TR	<i>1200.0</i>	Freq	<i>320</i>
	Receiver Bandwidth	<i>83.33</i>	Phase	<i>160</i>
	IMAGE ENHANCE		Freq DIR	<i>Unswap</i>
	Filter Choice	<i>None</i>	# of Acq. Before Pause	<i>0</i>
	GATING/TRIGGER		Phase FOV	<i>1.00</i>
	Auto Trigger Type	<i>Off</i>	Auto Shim	<i>Auto</i>
	FMRI		Phase Correction	<i>No</i>
	PSD Trigger	<i>Internal</i>	USER CVS	
	View Order	<i>Bottom/Up</i>	User CV1	<i>1.00</i>
	# of Repetitions REST	<i>0</i>	MULTI-PHASE	
	# of Repetitions ACTIVE	<i>0</i>	Seperate Series	<i>0</i>
SAT		Mask Phase	<i>0</i>	
Tag Type	<i>None</i>	Mask Pause	<i>0</i>	
TRICKS		DIFFUSION		
Pause On/Off	<i>On</i>	Recon All Images	<i>On</i>	
Auto Subtract	<i>0</i>	CONTRAST		
Auto SCIC	<i>Off</i>	Contrast Yes/No	<i>No</i>	
OTHERS				
Protocol Notes	<i>Hands should be elevated on pads at patients sides to reduce the potential of phase wrap.</i>			

3-Plane Localizer

McLeod Pavilion

Protocol: adult_pelvis_Prostate

PATIENT POSITION		IMAGING PARAMETERS	
Patient Entry	Feet First	Imaging Mode	2D
Patient Position	Supine	Pulse Sequence	FSE-XL
Coil Configuration	Body	Imaging Options	NPW, EDR, TRF, Fast, FR
Plane	SAGITTAL	SCAN RANGE	
Series Description	SAG T2	FOV	20.0
SCAN TIMING		Slice Thickness	3.0
Flip Angle	170	Slice Spacing	0.0
TE	160.0	ACQ TIMING	
Number of Echoes	1	Freq	288
TR	8656.0	Phase	224
Echo Train Length	24	Freq DIR	A/P
Receiver Bandwidth	31.25	Fat Shift DIR	Normal (P)
IMAGE ENHANCE		NEX	3.00
Filter Choice	None	Auto Shim	Auto
GATING/TRIGGER		Phase Correction	Yes
Auto Trigger Type	Off	USER CVS	
FMRI		User CV8	1.00
PSD Trigger	Internal	User CV15	1.00
View Order	Bottom/Up	User CV22	1.00
# of Repetitions REST	0	TR Min	2500.0
# of Repetitions ACTIVE	0	TR Max	11000.0
SAT		MULTI-PHASE	
SAT Location	S	Seperate Series	0
SAT Location	I	Mask Phase	0
Tag Type	None	Mask Pause	0
TRICKS		DIFFUSION	
Pause On/Off	On	Recon All Images	On
Auto Subtract	0	TRACKER	
Auto SCIC	2	Tracker Length	200.0
CONTRAST		Tracker Thickness	20.0
Contrast Yes/No	No		

SAG T2

SAG T2

McLeod Pavilion

Protocol: adult_pelvis_Prostate

AX T1 WHOLE PELVIS	PATIENT POSITION		IMAGING PARAMETERS	
	Patient Entry	<i>Feet First</i>	Imaging Mode	<i>2D</i>
	Patient Position	<i>Supine</i>	Pulse Sequence	<i>FSE-XL</i>
	Coil Configuration	<i>Body</i>	Imaging Options	<i>NPW, EDR, TRF, Fast, ARC</i>
	Plane	<i>OBLIQUE</i>	SCAN RANGE	
	Series Description	<i>AX T1 WHOLE PELVIS</i>	FOV	<i>40.0</i>
	SCAN TIMING		Slice Thickness	<i>8.0</i>
	Flip Angle	<i>111</i>	Slice Spacing	<i>2.0</i>
	TE	<i>Min Full</i>	ACQ TIMING	
	Number of Echoes	<i>1</i>	Freq	<i>320</i>
	TR	<i>650.0</i>	Phase	<i>224</i>
	Echo Train Length	<i>3</i>	Freq DIR	<i>A/P</i>
	Receiver Bandwidth	<i>35.71</i>	Fat Shift DIR	<i>Normal (A)</i>
	IMAGE ENHANCE		NEX	<i>3.00</i>
	Filter Choice	<i>None</i>	# of Acq. Before Pause	<i>0</i>
	GATING/TRIGGER		Auto Shim	<i>Auto</i>
	Auto Trigger Type	<i>Off</i>	Phase Correction	<i>No</i>
	FMRI		USER CVS	
	PSD Trigger	<i>Internal</i>	User CV22	<i>1.00</i>
	View Order	<i>Bottom/Up</i>	TR Min	<i>650.0</i>
	# of Repetitions REST	<i>0</i>	TR Max	<i>975.0</i>
	# of Repetitions ACTIVE	<i>0</i>	MULTI-PHASE	
	SAT		Seperate Series	<i>0</i>
	Tag Type	<i>None</i>	Mask Phase	<i>0</i>
	TRICKS		Mask Pause	<i>0</i>
Pause On/Off	<i>On</i>	DIFFUSION		
Auto Subtract	<i>0</i>	Recon All Images	<i>On</i>	
Auto SCIC	<i>2</i>	TRACKER		
CONTRAST		Tracker Length	<i>200.0</i>	
Contrast Yes/No	<i>No</i>	Tracker Thickness	<i>20.0</i>	

AX T1 WHOLE PELVIS

McLeod Pavilion

Protocol: adult_pelvis_Prostate

PATIENT POSITION		IMAGING PARAMETERS	
Patient Entry	Feet First	Imaging Mode	2D
Patient Position	Supine	Pulse Sequence	Spin Echo
Coil Configuration	Body	Imaging Options	EPI, DIFF
Plane	AXIAL	SCAN RANGE	
Series Description	Ax DWI B/50/800/1400 FOCUS	FOV	20.0
SCAN TIMING		Slice Thickness	3.0
TE	Minimum	Slice Spacing	0.0
Number of Echoes	1	ACQ TIMING	
TR	5345.0	Freq	100
Number of Shots	1	Phase	80
IMAGE ENHANCE		Freq DIR	R/L
Filter Choice	None	Phase FOV	0.80
GATING/TRIGGER		Auto Shim	Auto
Auto Trigger Type	Off	Phase Correction	Yes
FMRI		USER CVS	
PSD Trigger	Internal	User CV0	1.00
View Order	Bottom/Up	User CV5	1.00
# of Repetitions REST	0	User CV17	1.00
# of Repetitions ACTIVE	0	TR Min	3000.0
SAT		TR Max	17000.0
Tag Type	None	MULTI-PHASE	
TRICKS		Seperate Series	0
Pause On/Off	On	Mask Phase	0
Auto Subtract	0	Mask Pause	0
Auto SCIC	Off	DIFFUSION	
		Optimized TE	Yes
		Diffusion Directions	All
		Number of Diffusion Directions	3
		Number of T2 Images	0
		Dual Spin Echo	Off
		Recon All Images	On
		CONTRAST	
		Contrast Yes/No	No

Ax DWI B/50/800/1400 FOCUS

Ax DWI B/50/800/1400 FOCUS

OTHERS

Protocol Notes

PLACE TIGHT SHIM OVER PROSTATE

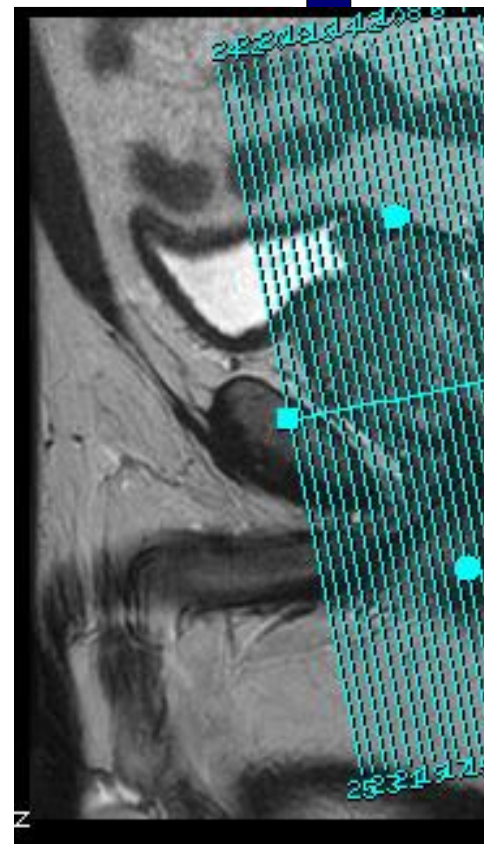
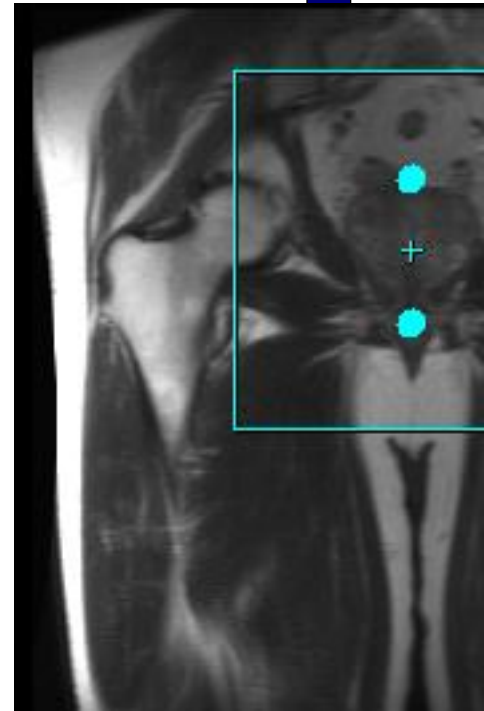
*Synthetic DWI:
Diagnosis Should not be made by reviewing synthetic DWI only.
Diffusion contrast may differ from acquired DWI with the same b-value due to several considerations:
- Different TE
- Non mono-exponential signal decay from IVIM and restricted diffusion effects.
*Using a b-value between 50-100 instead of a T2 may help synthetic DWI quality.
Synthetic DWI image quality may be effected by:
- Peristalsis and organ motion
- B-value registration
*RTFA and ASSET may help improve synthetic DWI image quality.
*Breath hold imaging may help improve synthetic DWI image quality in the abdomen.
Synthetic DWI should not be used for ADC calculations by ReadyView or any other ADC processing software.*

Protocol: adult_pelvis_Prostate

COR T2	PATIENT POSITION		IMAGING PARAMETERS		COR T2
	Patient Entry	<i>Feet First</i>	Imaging Mode	<i>2D</i>	
	Patient Position	<i>Supine</i>	Pulse Sequence	<i>FSE-XL</i>	
	Coil Configuration	<i>Body</i>	Imaging Options	<i>NPW, EDR, TRF, Fast, FR</i>	
	Plane	<i>OBLIQUE</i>	SCAN RANGE		
	Series Description	<i>COR T2</i>	FOV	<i>18.0</i>	
	SCAN TIMING		Slice Thickness	<i>3.0</i>	
	Flip Angle	<i>170</i>	Slice Spacing	<i>0.0</i>	
	TE	<i>160.0</i>	ACQ TIMING		
	Number of Echoes	<i>1</i>	Freq	<i>288</i>	
	TR	<i>8085.0</i>	Phase	<i>224</i>	
	Echo Train Length	<i>24</i>	Freq DIR	<i>S/I</i>	
	Receiver Bandwidth	<i>31.25</i>	Fat Shift DIR	<i>Normal (I)</i>	
	IMAGE ENHANCE		NEX	<i>4.00</i>	
	Filter Choice	<i>None</i>	Auto Shim	<i>Auto</i>	
	GATING/TRIGGER		Phase Correction	<i>Yes</i>	
	Auto Trigger Type	<i>Off</i>	USER CVS		
	FMRI		User CV8	<i>1.00</i>	
	PSD Trigger	<i>Internal</i>	User CV15	<i>1.00</i>	
	View Order	<i>Bottom/Up</i>	User CV22	<i>1.00</i>	
	# of Repetitions REST	<i>0</i>	TR Min	<i>2500.0</i>	
	# of Repetitions ACTIVE	<i>0</i>	TR Max	<i>11000.0</i>	
	SAT		MULTI-PHASE		
	Tag Type	<i>None</i>	Seperate Series	<i>0</i>	
	TRICKS		Mask Phase	<i>0</i>	
Pause On/Off	<i>On</i>	Mask Pause	<i>0</i>		
Auto Subtract	<i>0</i>	DIFFUSION			
Auto SCIC	<i>2</i>	Recon All Images	<i>On</i>		
CONTRAST		TRACKER			
Contrast Yes/No	<i>No</i>	Tracker Length	<i>200.0</i>		
		Tracker Thickness	<i>20.0</i>		

OTHERS

Protocol Notes



McLeod Pavilion

Protocol: adult_pelvis_Prostate

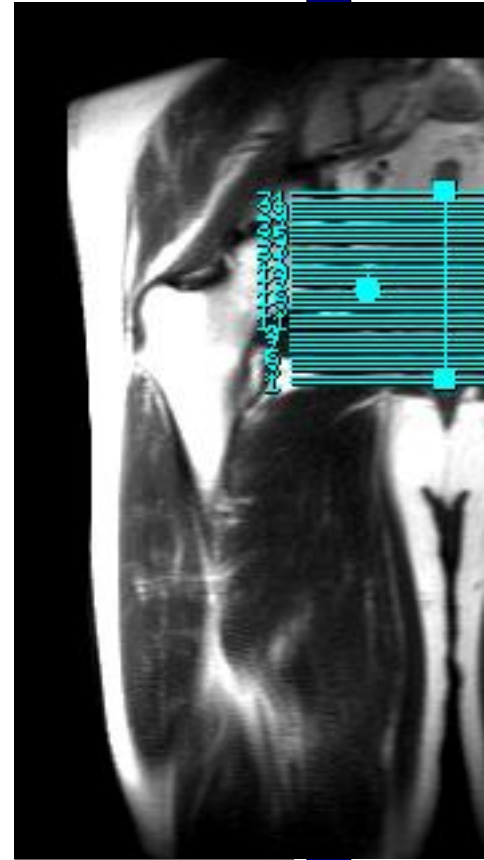
PATIENT POSITION		IMAGING PARAMETERS	
Patient Entry	Feet First	Imaging Mode	2D
Patient Position	Supine	Pulse Sequence	FSE-XL
Coil Configuration	Body	Imaging Options	NPW, EDR, TRF, Fast, ZIP512, ARC
Plane	OBLIQUE		
Series Description	AX T2		
SCAN TIMING		SCAN RANGE	
Flip Angle	170	FOV	16.0
TE	160.0	Slice Thickness	3.0
Number of Echoes	1	Slice Spacing	0.0
TR	8561.0		
Echo Train Length	24	ACQ TIMING	
Receiver Bandwidth	35.71	Freq	224
		Phase	224
		Freq DIR	A/P
		Fat Shift DIR	Reversed (P)
		NEX	5.00
		Auto Shim	Auto
		Phase Correction	No
IMAGE ENHANCE		USER CVS	
Filter Choice	B	User CV15	2.00
		User CV18	1.00
		User CV22	1.00
		TR Min	2500.0
		TR Max	11000.0
GATING/TRIGGER		MULTI-PHASE	
Auto Trigger Type	Off	Seperate Series	0
		Mask Phase	0
		Mask Pause	0
FMRI		DIFFUSION	
PSD Trigger	Internal	Recon All Images	On
View Order	Bottom/Up		
# of Repetitions REST	0	TRACKER	
# of Repetitions ACTIVE	0	Tracker Length	200.0
		Tracker Thickness	20.0
SAT			
Tag Type	None		
TRICKS			
Pause On/Off	On		
Auto Subtract	0		
Auto SCIC	2		
CONTRAST			
Contrast Yes/No	No		

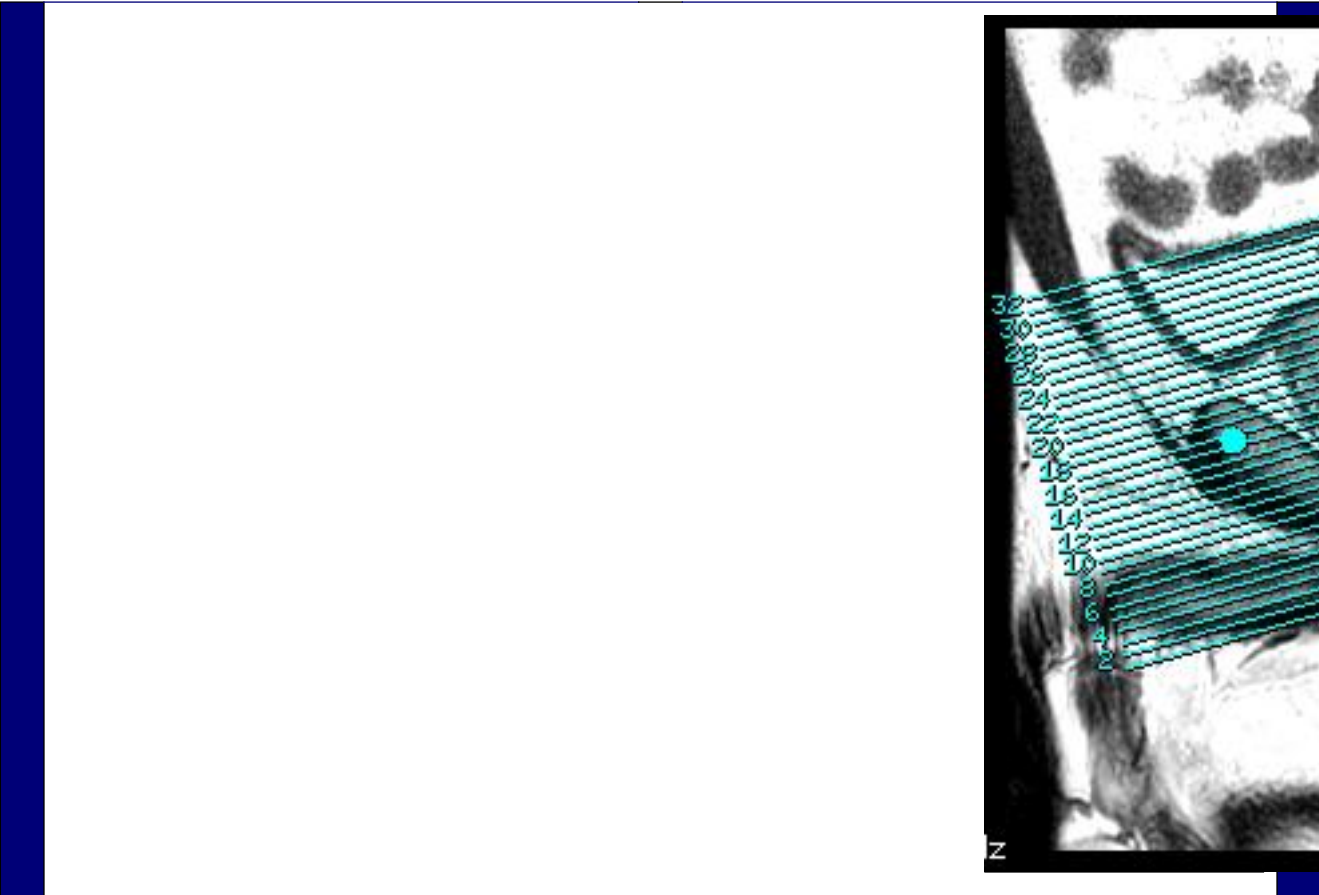
AX T2

AX T2

OTHERS

Protocol Notes





McLeod Pavilion

Protocol: adult_pelvis_Prostate

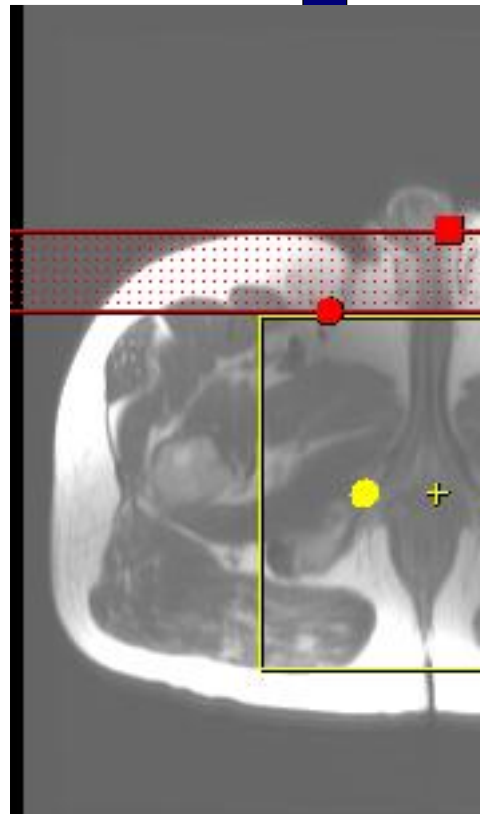
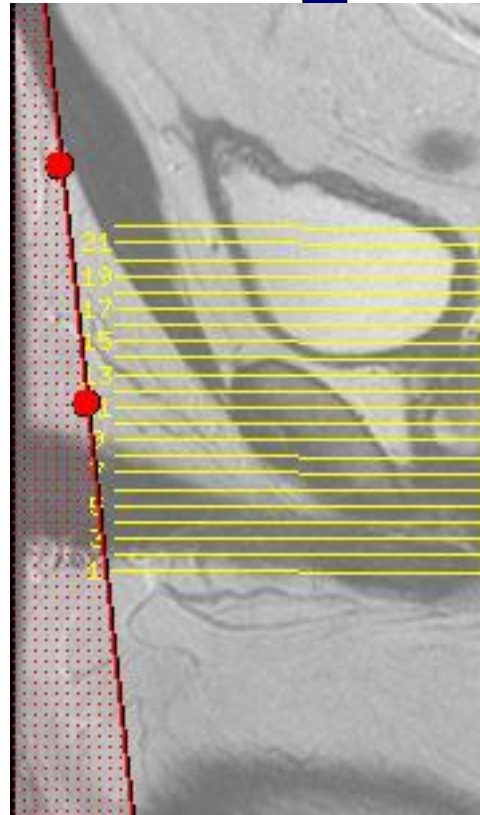
PATIENT POSITION		IMAGING PARAMETERS	
Patient Entry	Feet First	Imaging Mode	2D
Patient Position	Supine	Pulse Sequence	FSE-XL
Coil Configuration	Body	Imaging Options	NPW, EDR, TRF, Fast, ZIP512
Plane	OBLIQUE		
Series Description	AX T1 SE		
SCAN TIMING		SCAN RANGE	
Flip Angle	111	FOV	16.0
TE	Min Full	Slice Thickness	3.0
Number of Echoes	1	Slice Spacing	0.0
TR	682.0		
Echo Train Length	4	ACQ TIMING	
Receiver Bandwidth	27.78	Freq	256
		Phase	224
		Freq DIR	A/P
		Fat Shift DIR	Normal (A)
		NEX	4.00
		# of Acq. Before Pause	0
		Auto Shim	Auto
		Phase Correction	No
IMAGE ENHANCE		USER CVS	
Filter Choice	None	User CV22	1.00
		TR Min	400.0
		TR Max	850.0
GATING/TRIGGER		MULTI-PHASE	
Auto Trigger Type	Off	Seperate Series	0
		Mask Phase	0
		Mask Pause	0
FMRI		DIFFUSION	
PSD Trigger	Internal	Recon All Images	On
View Order	Bottom/Up		
# of Repetitions REST	0		
# of Repetitions ACTIVE	0		
SAT		TRACKER	
Tag Type	None	Tracker Length	200.0
		Tracker Thickness	20.0
TRICKS			
Pause On/Off	On		
Auto Subtract	0		
Auto SCIC	Off		
CONTRAST			
Contrast Yes/No	No		

AX T1 SE

AX T1 SE

OTHERS

Protocol Notes



Protocol: adult_pelvis_Prostate

PATIENT POSITION		IMAGING PARAMETERS	
Patient Entry	<i>Feet First</i>	Imaging Mode	<i>2D</i>
Patient Position	<i>Supine</i>	Pulse Sequence	<i>Spin Echo</i>
Coil Configuration	<i>Body</i>	Imaging Options	<i>Seq, EDR, TRF, Fast, SS, FR, ARC</i>
Plane	<i>3-PLANE</i>	SCAN RANGE	
Series Description	<i>---DYNAMIC---</i>	FOV	<i>42.0</i>
SCAN TIMING		Slice Thickness	<i>8.0</i>
TE	<i>80.0</i>	Slice Spacing	<i>5.0</i>
Number of Echoes	<i>1</i>	ACQ TIMING	
TR	<i>Minimum</i>	Freq	<i>320</i>
Receiver Bandwidth	<i>83.33</i>	Phase	<i>160</i>
IMAGE ENHANCE		Freq DIR	<i>Unswap</i>
Filter Choice	<i>None</i>	# of Acq. Before Pause	<i>0</i>
GATING/TRIGGER		Phase FOV	<i>1.00</i>
Auto Trigger Type	<i>Off</i>	Auto Shim	<i>Auto</i>
FMRI		Phase Correction	<i>No</i>
PSD Trigger	<i>Internal</i>	USER CVS	
Slice Order	<i>Interleaved</i>	User CV1	<i>1.00</i>
View Order	<i>Bottom/Up</i>	MULTI-PHASE	
# of Repetitions REST	<i>0</i>	Seperate Series	<i>0</i>
# of Repetitions ACTIVE	<i>0</i>	Mask Phase	<i>0</i>
SAT		Mask Pause	<i>0</i>
Tag Type	<i>None</i>	DIFFUSION	
TRICKS		Recon All Images	<i>On</i>
Pause On/Off	<i>On</i>	CONTRAST	
Auto Subtract	<i>0</i>	Contrast Yes/No	<i>No</i>
Auto SCIC	<i>Off</i>		
OTHERS			
Protocol Notes	<i>Hands should be elevated on pads at patients sides to reduce the potential of phase wrap.</i>		

McLeod Pavilion

Protocol: adult_pelvis_Prostate

PATIENT POSITION		IMAGING PARAMETERS	
Patient Entry	<i>Feet First</i>	Imaging Mode	<i>3D</i>
Patient Position	<i>Supine</i>	Pulse Sequence	<i>LAVA</i>
Coil Configuration	<i>Body</i>	Imaging Options	<i>EDR, Fast, MPh, ZIP512, Assét</i>
Plane	<i>AXIAL</i>	SCAN RANGE	
Series Description	<i>AX DYN T1 POST</i>	FOV	<i>26.0</i>
SCAN TIMING		Slice Thickness	<i>3.0</i>
Flip Angle	<i>12</i>	Location per Slab	<i>30</i>
Number of Echoes	<i>1</i>	Overlap Locations	<i>0</i>
Receiver Bandwidth	<i>62.50</i>	ACQ TIMING	
IMAGE ENHANCE		Freq	<i>192</i>
Filter Choice	<i>None</i>	Phase	<i>160</i>
GATING/TRIGGER		Freq DIR	<i>R/L</i>
Auto Trigger Type	<i>Off</i>	# of Acq. Before Pause	<i>0</i>
MULTI-PHASE		Phase FOV	<i>1.00</i>
Slice per Location	<i>45</i>	Auto Shim	<i>Auto</i>
Delay after Acquisition	<i>Minimum</i>	Phase Correction	<i>No</i>
Seperate Series	<i>0</i>	FMRI	
Delay after Acquisition without AV	<i>1</i>	PSD Trigger	<i>Internal</i>
Trigger Delay without AV	<i>0</i>	View Order	<i>Bottom/Up</i>
Mask Phase	<i>0</i>	# of Repetitions REST	<i>0</i>
Mask Pause	<i>0</i>	# of Repetitions ACTIVE	<i>0</i>
DIFFUSION		SAT	
Recon All Images	<i>On</i>	Tag Type	<i>None</i>
CONTRAST		TRICKS	
Contrast Yes/No	<i>Yes</i>	Pause On/Off	<i>On</i>
		Auto Subtract	<i>0</i>
		Auto SCIC	<i>Off</i>

AX DYN T1 POST

AX DYN T1 POST

OTHERS

Protocol Notes

*Arm the injector. Inject contrast when the second set of images begin to show on the auto viewer.
BE CAREFUL GOING UP ON IOCS PER SLAB IT CHANGES THE TIME PER SECONDS IT NEEDS TO STAY AT 7 SECS PER PHASE*

Details

Multi-Phase

Total Phases: 45

Phase Acquisition Order

Sequential In

Delay After Acq: minimum ▼

McLeod Pavilion

Protocol: adult_pelvis_Prostate

PATIENT POSITION		IMAGING PARAMETERS	
Patient Entry	Feet First	Imaging Mode	2D
Patient Position	Supine	Pulse Sequence	FSE-XL
Coil Configuration	Body	Imaging Options	NPW, EDR, TRF, Fast, ARC
Plane	OBLIQUE	SCAN RANGE	
Series Description	AX T1 WHOLE PELVIS FS	FOV	40.0
SCAN TIMING		Slice Thickness	8.0
Flip Angle	111	Slice Spacing	2.0
TE	Min Full	ACQ TIMING	
Number of Echoes	1	Freq	320
TR	705.0	Phase	224
Echo Train Length	3	Freq DIR	A/P
Receiver Bandwidth	35.71	Fat Shift DIR	Normal (A)
IMAGE ENHANCE		NEX	3.00
Filter Choice	None	# of Acq. Before Pause	0
GATING/TRIGGER		Auto Shim	Auto
Auto Trigger Type	Off	Phase Correction	No
FMRI		USER CVS	
PSD Trigger	Internal	User CV19	1.00
View Order	Bottom/Up	User CV22	1.00
# of Repetitions REST	0	TR Min	650.0
# of Repetitions ACTIVE	0	TR Max	975.0
SAT		MULTI-PHASE	
Tag Type	None	Seperate Series	0
Fat/Water Saturation	Fat	Mask Phase	0
TRICKS		Mask Pause	0
Pause On/Off	On	DIFFUSION	
Auto Subtract	0	Recon All Images	On
Auto SCIC	2	TRACKER	
CONTRAST		Tracker Length	200.0
Contrast Yes/No	Yes	Tracker Thickness	20.0

AX T1 WHOLE PELVIS FS

AX T1 WHOLE PELVIS FS

McLeod Pavilion

Protocol: adult_pelvis_Prostate

-RAD APPROVAL ONLY- OPTIONAL	PATIENT POSITION		IMAGING PARAMETERS	
	Patient Entry	<i>Feet First</i>	Imaging Mode	<i>2D</i>
	Patient Position	<i>Supine</i>	Pulse Sequence	<i>Spin Echo</i>
	Coil Configuration	<i>Body</i>	Imaging Options	<i>Seq, EDR, TRF, Fast, SS, FR, ARC</i>
	Plane	<i>3-PLANE</i>	SCAN RANGE	
	Series Description	<i>-RAD APPROVAL ONLY- OPTIONAL</i>	FOV	<i>42.0</i>
	SCAN TIMING		Slice Thickness	<i>8.0</i>
	TE	<i>80.0</i>	Slice Spacing	<i>5.0</i>
	Number of Echoes	<i>1</i>	ACQ TIMING	
	TR	<i>Minimum</i>	Freq	<i>320</i>
	Receiver Bandwidth	<i>83.33</i>	Phase	<i>160</i>
	IMAGE ENHANCE		Freq DIR	<i>Unswap</i>
	Filter Choice	<i>None</i>	# of Acq. Before Pause	<i>0</i>
	GATING/TRIGGER		Phase FOV	<i>1.00</i>
	Auto Trigger Type	<i>Off</i>	Auto Shim	<i>Auto</i>
	FMRI		Phase Correction	<i>No</i>
	PSD Trigger	<i>Internal</i>	USER CVS	
	Slice Order	<i>Interleaved</i>	User CV1	<i>1.00</i>
	View Order	<i>Bottom/Up</i>	MULTI-PHASE	
	# of Repetitions REST	<i>0</i>	Seperate Series	<i>0</i>
	# of Repetitions ACTIVE	<i>0</i>	Mask Phase	<i>0</i>
	SAT		Mask Pause	<i>0</i>
	Tag Type	<i>None</i>	DIFFUSION	
	TRICKS		Recon All Images	<i>On</i>
	Pause On/Off	<i>On</i>	CONTRAST	
Auto Subtract	<i>0</i>	Contrast Yes/No	<i>No</i>	
Auto SCIC	<i>Off</i>			
OTHERS				
Protocol Notes	<i>Hands should be elevated on pads at patients sides to reduce the potential of phase wrap.</i>			

-RAD APPROVAL ONLY- OPTIONAL

McLeod Pavilion

Protocol: adult_pelvis_Prostate

PATIENT POSITION		IMAGING PARAMETERS	
Patient Entry	<i>Feet First</i>	Imaging Mode	<i>3D</i>
Patient Position	<i>Supine</i>	Pulse Sequence	<i>LAVA</i>
Coil Configuration	<i>Body</i>	Imaging Options	<i>EDR, Fast, MPh, ZIP512, ARC</i>
Plane	<i>AXIAL</i>		
Series Description	<i>AX DYN T1 POST WITH ACR 8 SEC A SCAN</i>	SCAN RANGE	
SCAN TIMING		FOV	<i>26.0</i>
Flip Angle	<i>12</i>	Slice Thickness	<i>3.0</i>
Number of Echoes	<i>1</i>	Location per Slab	<i>30</i>
Receiver Bandwidth	<i>62.50</i>	Overlap Locations	<i>0</i>
IMAGE ENHANCE		ACQ TIMING	
Filter Choice	<i>None</i>	Freq	<i>192</i>
GATING/TRIGGER		Phase	<i>160</i>
Auto Trigger Type	<i>Off</i>	Freq DIR	<i>R/L</i>
MULTI-PHASE		# of Acq. Before Pause	<i>0</i>
Slice per Location	<i>45</i>	Phase FOV	<i>1.00</i>
Delay after Acquisition	<i>Minimum</i>	Auto Shim	<i>Auto</i>
Seperate Series	<i>0</i>	Phase Correction	<i>No</i>
Delay after Acquisition without AV	<i>1</i>	FMRI	
Trigger Delay without AV	<i>0</i>	PSD Trigger	<i>Internal</i>
Mask Phase	<i>0</i>	View Order	<i>Bottom/Up</i>
Mask Pause	<i>0</i>	# of Repetitions REST	<i>0</i>
DIFFUSION		# of Repetitions ACTIVE	<i>0</i>
Recon All Images	<i>On</i>	SAT	
CONTRAST		Tag Type	<i>None</i>
Contrast Yes/No	<i>Yes</i>	TRICKS	
		Pause On/Off	<i>On</i>
		Auto Subtract	<i>0</i>
		Auto SCIC	<i>Off</i>

AX DYN T1 POST WITH ACR 8 SEC A SCAN

AX DYN T1 POST WITH ACR 8 SEC A SCAN

OTHERS

Protocol Notes

*Arm the injector. Inject contrast when the second set of images begin to show on the auto viewer.
BE CAREFUL GOING UP ON IOCS PER SLAB IT CHANGES THE TIME PER SECONDS IT NEEDS TO STAY AT 7 SECS PER PHASE*

Details

Multi-Phase

Total Phases: 45

Phase Acquisition Order

Sequential In

Delay After Acq: minimum ▼

McLeod Pavilion

Protocol: adult_pelvis_Prostate

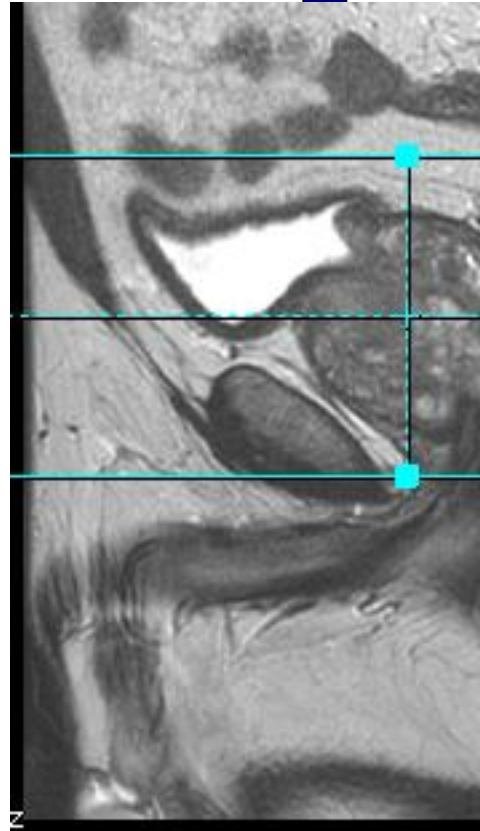
PATIENT POSITION		IMAGING PARAMETERS	
Patient Entry	<i>Feet First</i>	Imaging Mode	<i>3D</i>
Patient Position	<i>Supine</i>	Pulse Sequence	<i>LAVA</i>
Coil Configuration	<i>Body</i>	Imaging Options	<i>EDR, Fast, MPh, ZIP512, Assét</i>
Plane	<i>AXIAL</i>	SCAN RANGE	
Series Description	<i>AX DYN T1 POST 10 SEC</i>	FOV	<i>26.0</i>
SCAN TIMING		Slice Thickness	<i>3.0</i>
Flip Angle	<i>12</i>	Location per Slab	<i>30</i>
Number of Echoes	<i>1</i>	Overlap Locations	<i>0</i>
Receiver Bandwidth	<i>62.50</i>	ACQ TIMING	
IMAGE ENHANCE		Freq	<i>160</i>
Filter Choice	<i>None</i>	Phase	<i>224</i>
GATING/TRIGGER		Freq DIR	<i>R/L</i>
Auto Trigger Type	<i>Off</i>	# of Acq. Before Pause	<i>0</i>
MULTI-PHASE		Phase FOV	<i>1.00</i>
Slice per Location	<i>35</i>	Auto Shim	<i>Auto</i>
Delay after Acquisition	<i>Minimum</i>	Phase Correction	<i>No</i>
Seperate Series	<i>0</i>	FMRI	
Delay after Acquisition without AV	<i>1</i>	PSD Trigger	<i>Internal</i>
Trigger Delay without AV	<i>0</i>	View Order	<i>Bottom/Up</i>
Mask Phase	<i>0</i>	# of Repetitions REST	<i>0</i>
Mask Pause	<i>0</i>	# of Repetitions ACTIVE	<i>0</i>
DIFFUSION		SAT	
Dual Spin Echo	<i>Off</i>	Tag Type	<i>None</i>
Diffusion Tenser Processing Output	<i>No Selection</i>	TRICKS	
Recon All Images	<i>On</i>	Pause On/Off	<i>On</i>
CONTRAST		Auto Subtract	<i>0</i>
Contrast Yes/No	<i>No</i>	Auto SCIC	<i>Off</i>

AX DYN T1 POST 10 SEC

AX DYN T1 POST 10 SEC

	<p>OTHERS</p>
--	---------------

Protocol Notes



McLeod Pavilion

Adjust the desired number of phases under the Multi-Phase tab.
NO SAT BANDS!!!

McLeod Pavilion

Protocol: adult_pelvis_Prostate

PATIENT POSITION		IMAGING PARAMETERS	
Patient Entry	Feet First	Imaging Mode	3D
Patient Position	Supine	Pulse Sequence	DISCO
Coil Configuration	Body	Imaging Options	EDR, Fast, MPhVar, ARC
Plane	AXIAL	IDEAL	3
Series Description	AX DYN T1 POST 6 SEC TEMRES	SCAN RANGE	
SCAN TIMING		FOV	26.0
Flip Angle	12	Slice Thickness	3.0
TE	Minimum	Location per Slab	38
Number of Echoes	1	Overlap Locations	0
Receiver Bandwidth	142.86	ACQ TIMING	
IMAGE ENHANCE		Freq	224
Filter Choice	None	Phase	224
GATING/TRIGGER		Freq DIR	A/P
Auto Trigger Type	Off	Phase FOV	1.00
FMRI		Auto Shim	Auto
PSD Trigger	Internal	Phase Correction	No
View Order	Bottom/Up	USER CVS	
# of Repetitions REST	0	User CV11	2.00
# of Repetitions ACTIVE	0	MULTI-PHASE	
DIFFUSION		# of Phases	55
Recon All Images	On	Seperate Series	0
CONTRAST		Trigger Delay without AV	0
Contrast Yes/No	No	Mask Phase	0
		Mask Pause	0
		TRICKS	
		Pause On/Off	On
		Auto Subtract	0
		Auto SCIC	Off
		OTHERS	
		Protocol Notes	<p>Scan Time Dislay: 1st scan time = total time for wash in and delay phases. 2nd scan time = mask scan time/non wash in phases scan time. If "Mask" and "Pause After Mask" are selected the scanner will pause after completeing the mask portion and wait for the scan button to be pressed before starting the wash in portions. Phases per Locations: = wash in and deayed phases (Total number of phases) Wash-in-Phases: = number of phases for the wash in portion. - After the pre/mask is complete the scanner will pause. - Press the scan button to begin the wash in portions - The delayed phases will start after the prescribed delay time runs down.</p>

AX DYN T1 POST 6 SEC TEMRES

AX DYN T1 POST 6 SEC TEMRES

McLeod Pavilion

Protocol: adult_pelvis_Prostate

3D Ax LAVA BH LARGE FOV PELVIS	PATIENT POSITION		IMAGING PARAMETERS	
	Patient Entry	<i>Feet First</i>	Imaging Mode	<i>3D</i>
	Patient Position	<i>Supine</i>	Pulse Sequence	<i>LAVA</i>
	Coil Configuration	<i>Body</i>	Imaging Options	<i>EDR, Fast, ZIP2, ARC</i>
	Plane	<i>AXIAL</i>	PSD Name	<i>efgre3d_aspir</i>
	Series Description	<i>3D Ax LAVA BH LARGE FOV PELVIS</i>	SCAN RANGE	
	SCAN TIMING		FOV	<i>42.0</i>
	Flip Angle	<i>12</i>	Slice Thickness	<i>4.4</i>
	Number of Echoes	<i>1</i>	Location per Slab	<i>56</i>
	TI	<i>24</i>	Overlap Locations	<i>0</i>
	Receiver Bandwidth	<i>62.50</i>	ACQ TIMING	
	IMAGE ENHANCE		Freq	<i>300</i>
	Filter Choice	<i>A</i>	Phase	<i>192</i>
	GATING/TRIGGER		Freq DIR	<i>R/L</i>
	Auto Trigger Type	<i>Off</i>	NEX	<i>1.00</i>
	FMRI		Phase FOV	<i>0.80</i>
	PSD Trigger	<i>Internal</i>	Auto Shim	<i>Auto</i>
	View Order	<i>Bottom/Up</i>	Phase Correction	<i>No</i>
	# of Repetitions REST	<i>0</i>	USER CVS	
	# of Repetitions ACTIVE	<i>0</i>	User CV4	<i>7.10</i>
	SAT		MULTI-PHASE	
	Tag Type	<i>None</i>	Seperate Series	<i>0</i>
	Fat/Water Saturation	<i>Fat Special</i>	Trigger Delay without AV	<i>7.1</i>
	TRICKS		Mask Phase	<i>0</i>
	Pause On/Off	<i>On</i>	Mask Pause	<i>0</i>
Auto Subtract	<i>0</i>	DIFFUSION		
Auto SCIC	<i>2</i>	Recon All Images	<i>On</i>	
		CONTRAST		
		Contrast Yes/No	<i>No</i>	

3D Ax LAVA BH LARGE FOV PELVIS

McLeod Pavilion

Protocol: adult_pelvis_Prostate

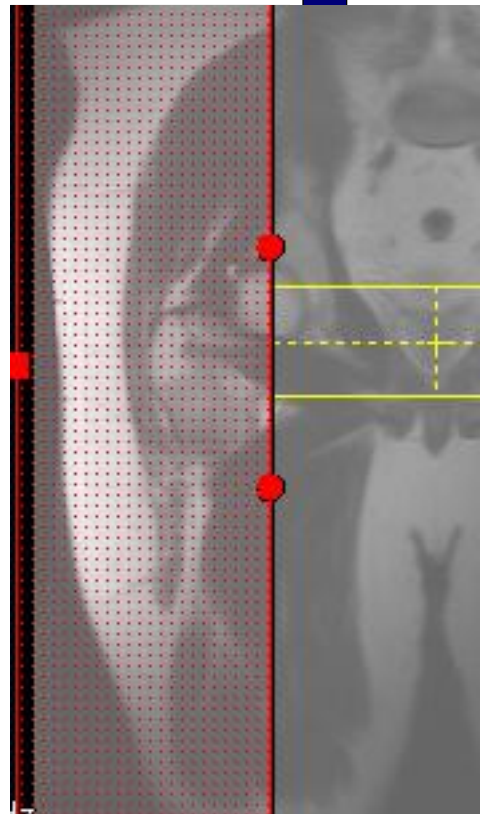
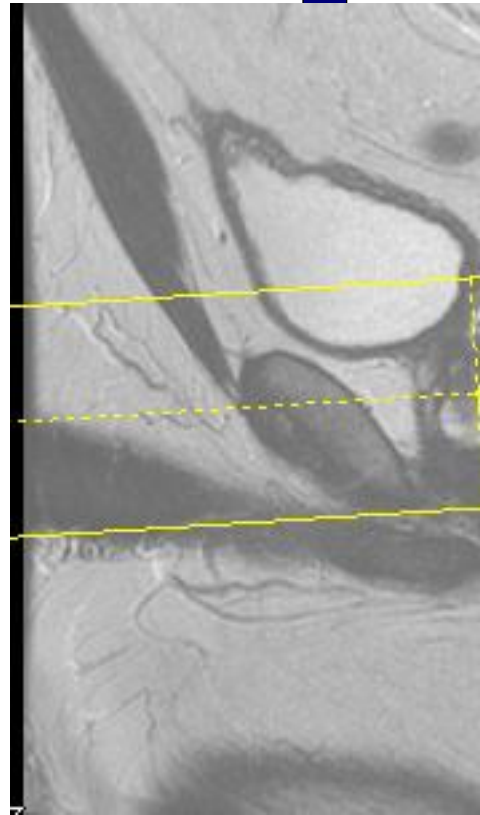
PATIENT POSITION		IMAGING PARAMETERS	
Patient Entry	<i>Feet First</i>	Imaging Mode	<i>3D</i>
Patient Position	<i>Supine</i>	Pulse Sequence	<i>Cube</i>
Coil Configuration	<i>Body</i>	Imaging Options	<i>EDR, Fast, ZIP512, ZIP2, FR, ARC</i>
Plane	<i>OBLIQUE</i>	SCAN RANGE	
Series Description	<i>3D Ax T2 Cube</i>	FOV	<i>26.0</i>
SCAN TIMING		Slice Thickness	<i>1.0</i>
TE	<i>Maximum</i>	Location per Slab	<i>72</i>
Number of Echoes	<i>1</i>	Overlap Locations	<i>0</i>
TR	<i>2000.0</i>	ACQ TIMING	
Echo Train Length	<i>84</i>	Freq	<i>340</i>
Receiver Bandwidth	<i>62.50</i>	Phase	<i>340</i>
IMAGE ENHANCE		Freq DIR	<i>A/P</i>
Filter Choice	<i>C</i>	NEX	<i>2.00</i>
GATING/TRIGGER		Phase FOV	<i>0.60</i>
Auto Trigger Type	<i>Off</i>	Auto Shim	<i>Auto</i>
MULTI-PHASE		Phase Correction	<i>No</i>
Seperate Series	<i>0</i>	FMRI	
Mask Phase	<i>0</i>	PSD Trigger	<i>Internal</i>
Mask Pause	<i>0</i>	View Order	<i>Bottom/Up</i>
DIFFUSION		# of Repetitions REST	<i>0</i>
Recon All Images	<i>On</i>	# of Repetitions ACTIVE	<i>0</i>
CONTRAST		SAT	
Contrast Yes/No	<i>No</i>	SAT Location	<i>R</i>
		SAT Location	<i>L</i>
		Tag Type	<i>None</i>
		TRICKS	
		Pause On/Off	<i>On</i>
		Auto Subtract	<i>0</i>
		Auto SCIC	<i>2</i>

3D Ax T2 Cube

3D Ax T2 Cube

OTHERS

Protocol Notes



Protocol: adult_pelvis_Prostate

PATIENT POSITION		IMAGING PARAMETERS	
Patient Entry	Feet First	Imaging Mode	2D
Patient Position	Supine	Pulse Sequence	PROPELLER
Coil Configuration	Body	Imaging Options	EDR, TRF, Fast, FR, ARC
Plane	OBLIQUE	SCAN RANGE	
Series Description	Sag T2 PROPELLER RAD APPROVAL	FOV	20.0
SCAN TIMING		Slice Thickness	3.0
Flip Angle	160	Slice Spacing	0.0
Number of Echoes	1	ACQ TIMING	
TR	5099.0	Freq	256
Echo Train Length	32	Freq DIR	S/I
Receiver Bandwidth	35.71	Fat Shift DIR	Normal (S)
IMAGE ENHANCE		NEX	3.00
Filter Choice	None	# of Acq. Before Pause	0
GATING/TRIGGER		Auto Shim	Auto
Auto Trigger Type	Off	Phase Correction	No
FMRI		USER CVS	
PSD Trigger	Internal	User CV5	1.00
View Order	Bottom/Up	TR Min	2500.0
# of Repetitions REST	0	TR Max	7000.0
# of Repetitions ACTIVE	0	MULTI-PHASE	
SAT		Seperate Series	0
Tag Type	None	Mask Phase	0
TRICKS		Mask Pause	0
Pause On/Off	On	DIFFUSION	
Auto Subtract	0	Recon All Images	On
Auto SCIC	2	CONTRAST	
OTHERS		Contrast Yes/No	No
Protocol Notes	CV5 (editable TE) in the advanced tab should be turned of for T2 weighed imaging.		

Sag T2 PROPELLER RAD APPROVAL

Sag T2 PROPELLER RAD APPROVAL

McLeod Pavilion

Protocol: adult_pelvis_Prostate

Cor T2 PROPELLER RAD APPROVAL	PATIENT POSITION		IMAGING PARAMETERS	
	Patient Entry	<i>Feet First</i>	Imaging Mode	<i>2D</i>
	Patient Position	<i>Supine</i>	Pulse Sequence	<i>PROPELLER</i>
	Coil Configuration	<i>Body</i>	Imaging Options	<i>EDR, TRF, Fast, FR, ARC</i>
	Plane	<i>OBLIQUE</i>	SCAN RANGE	
	Series Description	<i>Cor T2 PROPELLER RAD APPROVAL</i>	FOV	<i>18.0</i>
	SCAN TIMING		Slice Thickness	<i>3.0</i>
	Flip Angle	<i>160</i>	Slice Spacing	<i>0.0</i>
	Number of Echoes	<i>1</i>	ACQ TIMING	
	TR	<i>7591.0</i>	Freq	<i>256</i>
	Echo Train Length	<i>30</i>	Freq DIR	<i>S/I</i>
	Receiver Bandwidth	<i>31.25</i>	Fat Shift DIR	<i>Normal (I)</i>
	IMAGE ENHANCE		NEX	<i>3.00</i>
	Filter Choice	<i>None</i>	Auto Shim	<i>Auto</i>
	GATING/TRIGGER		Phase Correction	<i>No</i>
	Auto Trigger Type	<i>Off</i>	USER CVS	
	FMRI		User CV5	<i>1.00</i>
	PSD Trigger	<i>Internal</i>	TR Min	<i>2500.0</i>
	View Order	<i>Bottom/Up</i>	TR Max	<i>17000.0</i>
	# of Repetitions REST	<i>0</i>	MULTI-PHASE	
	# of Repetitions ACTIVE	<i>0</i>	Seperate Series	<i>0</i>
	SAT		Mask Phase	<i>0</i>
	Tag Type	<i>None</i>	Mask Pause	<i>0</i>
	TRICKS		DIFFUSION	
	Pause On/Off	<i>On</i>	Recon All Images	<i>On</i>
Auto Subtract	<i>0</i>	CONTRAST		
Auto SCIC	<i>2</i>	Contrast Yes/No	<i>No</i>	
OTHERS				
Protocol Notes	<i>CV5 (editable TE) in the advanced tab should be turned of for T2 weighed imaging.</i>			

Cor T2 PROPELLER RAD APPROVAL

Protocol: adult_pelvis_Prostate

Ax DWI B50/800/1400	PATIENT POSITION		IMAGING PARAMETERS	
	Patient Entry	<i>Feet First</i>	Imaging Mode	<i>2D</i>
	Patient Position	<i>Supine</i>	Pulse Sequence	<i>Spin Echo</i>
	Coil Configuration	<i>Body</i>	Imaging Options	<i>EPI, DIFF, Asset</i>
	Plane	<i>AXIAL</i>	SCAN RANGE	
	Series Description	<i>Ax DWI B50/800/1400</i>	FOV	<i>30.0</i>
	SCAN TIMING		Slice Thickness	<i>4.0</i>
	TE	<i>Minimum</i>	Slice Spacing	<i>2.0</i>
	Number of Echoes	<i>1</i>	ACQ TIMING	
	TR	<i>6200.0</i>	Freq	<i>96</i>
	Number of Shots	<i>1</i>	Phase	<i>96</i>
	IMAGE ENHANCE		Freq DIR	<i>R/L</i>
	Filter Choice	<i>None</i>	Phase FOV	<i>1.00</i>
	GATING/TRIGGER		Auto Shim	<i>Auto</i>
	Auto Trigger Type	<i>Off</i>	Phase Correction	<i>Yes</i>
	FMRI		USER CVS	
	PSD Trigger	<i>Internal</i>	User CV0	<i>1.00</i>
	View Order	<i>Bottom/Up</i>	User CV5	<i>1.00</i>
	# of Repetitions REST	<i>0</i>	User CV7	<i>1.00</i>
	# of Repetitions ACTIVE	<i>0</i>	User CV17	<i>1.00</i>
	SAT		MULTI-PHASE	
	Tag Type	<i>None</i>	Seperate Series	<i>0</i>
	TRICKS		Mask Phase	<i>0</i>
	Pause On/Off	<i>On</i>	Mask Pause	<i>0</i>
	Auto Subtract	<i>0</i>	DIFFUSION	
Auto SCIC	<i>2</i>	Optimized TE	<i>Yes</i>	
OTHERS		Diffusion Directions	<i>All</i>	
Protocol Notes	<i>Place Sat Bands Over Anterior and Posterior Fat</i>	Number of Diffusion Directions	<i>3</i>	
		Number of T2 Images	<i>0</i>	
		Dual Spin Echo	<i>Off</i>	
		Recon All Images	<i>On</i>	
		CONTRAST		
		Contrast Yes/No	<i>No</i>	

Ax DWI B50/800/1400